

2010-January-perf-dispatch	2
2010-February-perf-dispatch	4
2010-March-perf-dispatch	6
2010-April-perf-dispatch	8
2010-May-perf-dispatch	10
2010-June-perf-dispatch	12
2010-August-perf-dispatch	14
2010-September-perf-dispatch	16
2010-October-perf-dispatch	18
2010-November-perf-dispatch	20



Greater Alound City Stamp Club **Perf-Dispatch**

Volume XVI, Number 1

Established 1884

January, 2010

Where Parkway Central High School
Woodsmill Road

When 4th Monday each month at 8 PM

January Meeting

On January 25, **Alan Barasch** will present Missouri People & Places; an exercise in trivia.

Breakfast Club Meeting

The Breakfast group meets the 2nd Monday of the month. The next meeting is February 8th at Steak 'n Shake in Chesterfield at 8:30 AM.

2010 SCHEDULE

January 25, 2010Missouri People & Places Trivia
Feb 22..... Dennis Hahn: George Washington
February 26-28St Louis Stamp Expo
March 22..... xxx

Saint Louis Stamp Expo 2010

Expo will be upon us right after the February GMSCS meeting. Most committees need volunteers to check badges, help with set-up and take-down, and assist dealer check-in.

As a cost-cutting measure, APS is no longer sending a head office representative to discuss memberships, greet members, and give out literature. The local committee (**Alan Barasch**) is soliciting your assistance to operate the booth during the show. You must be an APS member.

Time requirements are as little as one hour.

The Friday of the show is "Children's Day" and we understand that six schools are bringing about 265 students. Much help is required to keep the children moving. On Saturday, there will again be a **Boy Scout Merit Badge** in stamp collecting seminar.

The **Military Postal History Society** is meeting as well as the **Illinois & Missouri Postal History societies**.

Again, this year, there will be an **Adult Beginner's** class on Sunday. If you or someone you know would be interested, contact **Tom Jozwik** at Regency or have them sign up on Saturday at the show.

<http://www.stLouisStampExpo.org>

Dues Time

The dues for the GMSCS have not changed in more than 15 years and are still the greatest bargain in philately. Dues are just \$5 for a single member or \$6 for the whole family.

This year, for the first time ever, we are offering an incentive to pay your dues early. Anyone paying by the end of February will receive a subscription (or extension) to the **American Stamp Dealer & Collector** magazine.

Dues Time

Name			\$5 - Single
Street			\$6 - Family
City State			
Dues are expected by 02/28/2010 to: Gary Hendren, 12737 Glenage Drive, Maryland Heights, MO 63043 Check your envelope --. If the "Thru" is 10 or higher, you are already covered!			

Officers – 2010

President	Tom Minor (314-645-4451)
Vice-President.....	Joe Conti (636-327-5569)
Treasurer.....	Gary Hendren (314-576-5261)
Secretary	Alan Barasch (314-994-1243)
Recording Secretary.....	Dan Baugher
Librarian & Dispatch Writer	Alan Barasch
Buxs Banker	Gene Stewart
Recording Secretary.....	Dan Baugher

© 2010 Greater Mound City Stamp Club, Inc

Important Announcement

If there is a speaker that you would like us to get, perhaps you can facilitate getting him.

<http://www.GreaterMoundCity.org>

Secretary@GreaterMoundCity.org

Auction

The list is below. Remember – a lot will not open on the floor unless a bid is placed on it during the “look” period.

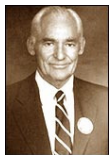
Lots should be turned in to **Joe Conti** (papaconti@aol.com) by the time of the breakfast meeting.

Missouri People & Places on Stamps

My presentation this month is a trivia exercise about people and places associated with Missouri. Nevertheless, have you stopped to think about the Missourians who should be on a stamp but the goal has eluded them?



Dale Carnegie was born in **Maryville, MO** in 1888 and attended State Teacher's College; now Central Missouri State University in Warrensburg. He won many friends and influenced a lot of people; but he has never gotten his face on a stamp?



Sam Walton grew up in Missouri, principally in Chesterfield and Columbia. He attended the **University of Missouri**, graduating in 1940. He was the richest man in America for most of the 1980s but has not had his likeness on a stamp.



Marlin Perkins was born in **Carthage, MO**. He is widely known as the director of the St. Louis Zoo and host of “Mutual of Omaha’s Wild Kingdom.” Have you seen his stamp?



Ginger Rogers was born in **Independence, MO** in 1911. She made 10 films with Fred Astaire in a career that encompassed 73 films from 1929 to 1984. Is she on a stamp? Isn't it about time?



J. C. Hall may not be a household name but you have probably purchased one of his products. His company founded in **Kansas City, MO** in 1910 sells more greeting cards than anyone else, owns Crayola crayons, Silly Putty, and the Hallmark Hall of Fame.



Greater Alound City Stamp Club **Perf-Dispatch**

Volume XVI, Number 2

Established 1884

February, 2010

Where Parkway Central High School
Woodsmill Road

When 4th Monday each month at 8 PM

February Meeting

On February 25, **Dennis Hahn** will present George Washington.

Breakfast Club Meeting

The Breakfast group meets the 2nd Monday of the month. The next meeting is March 8th at Steak 'n Shake in Chesterfield at 8:30 AM.

2010 SCHEDULE

Feb 22..... Dennis Hahn: George Washington
February 26-28 St Louis Stamp Expo
March 22..... TBA
April 26..... Guy Gasser: Valuing Stamps

Saint Louis Stamp Expo 2010

Expo will be upon us right after the meeting. Most committees need volunteers to check badges, help with set-up and take-down, and assist dealer check-in.

As a cost-cutting measure, APS is no longer sending a head office representative to discuss memberships, greet members, and give out literature. The local committee (**Alan Barasch**) is soliciting your assistance to operate the booth during the show. You must be an APS member.

Time requirements are as little as one hour.

The Friday of the show is "Children's Day" and we understand that six schools are bringing about 265 students. Much help is required to keep the children moving. On Saturday, there will again be a **Boy Scout Merit Badge** in stamp collecting seminar.

The **Military Postal History Society** is meeting as well as the **Illinois & Missouri Postal History societies**.

Again, this year, there will be an **Adult Beginner's** class on Sunday. If you or someone you know would be interested, contact **Lindsay Kahn** at Regency or have them sign up on Saturday at the show.

<http://www.stLouisStampExpo.org>

Dues Time

The dues for the GMCSC have not changed in more than 15 years and are still the greatest bargain in philately. Dues are just \$5 for a single member or \$6 for the whole family.

This year, for the first time ever, we are offering an incentive to pay your dues early. Anyone paying by the end of February will be entered in a drawing to receive a subscription (or extension) to the **American Stamp Dealer & Collector** magazine.

Dues Time

Name		\$5 - Single
Street		\$6 - Family
City State		
Dues are expected by 02/28/2010 to: Gary Hendren, 12737 Glenage Drive, Maryland Heights, MO 63043 Check your envelope --. If the "Thru" is 10 or higher, you are already covered!		

Officers – 2010

President	Tom Minor (314-645-4451)
Vice-President.....	Joe Conti (636-327-5569)
Treasurer.....	Gary Hendren (314-576-5261)
Secretary	Alan Barasch (alan@mophil.org)
Recording Secretary	Dan Baugher
Librarian & Dispatch Writer	Alan Barasch
Buxs Banker	Gene Stewart
Recording Secretary.....	Dan Baugher

© 2010 Greater Mound City Stamp Club, Inc

Important Announcement

If there is a speaker that you would like us to get, perhaps you can facilitate getting him.

<http://www.GreaterMoundCity.org>

Secretary@GreaterMoundCity.org

Auction

The list is below. Remember – a lot will not open on the floor unless a bid is placed on it during the “look” period.

Lots should be turned in to **Joe Conti**
(papaconti@aol.com) by the time of the breakfast meeting.

Big Empty Space

I started on the newsletter and left for work, figuring to finish it later. Right after parking my car, I stepped off uneven pavement and dislocated the elbow. I finished the newsletter typing with one hand. Next month has to be better.

<http://www.stLouisStampExpo.org>





Greater Alound City Stamp Club **Perf-Dispatch**

Volume XVI, Number 3

Established 1884

March, 2010

Where Parkway Central High School
Woodsmill Road

When 4th Monday each month at 8 PM

March Meeting

On March 22nd, bring something interesting from your collection to show to the membership. We will limit you to 5 minutes to bring us up to date on your collecting interests.

A good "Show & Tell" item is one stamp or one cover.

Breakfast Club Meeting

The Breakfast group meets the 2nd Monday of the month. The next meeting is **April 12th** at Steak 'n Shake in Chesterfield at 8:30 AM.

2010 SCHEDULE

March 22	Show & Tell: Spring
April 26	Guy Gasser: Grading Stamps
May 24	Alan, Tom, Gary: Topicals
June 28	Clothesline Exhibits
July	No Meeting
August 23	TBA
August 28-29	StampFest
September 27	TBA
October 25	David Straight
November 22	Auction Bux Sale & Elections
December 15	Holiday Party

Dues Update

While our Treasurer is gallivanting all over the country, he did not send me the updated list of dues payments.

The date on your mailing envelope is wrong if you paid at the February meeting.

If you have moved recently, please update us with your new address. The USPS charges 50¢ to get a forwarding and address correction.

Saint Louis Stamp Expo 2010

Expo was a huge success as usual. Several of our members were exhibiting and the results were:

Gold

Use of U.S. Parcel Post

Stamps 1913-1926.....G. Scott Ward

Silver

Rural Free Delivery –

The First 25 Years..... Gary G. Hendren

Imprinted Telegram Receipts

of Poland 1919-1924 Marcus Meyerotto

Bronze

Cabooses' Uses.....Dr. Robert Hanson

Scott Ward also won the United Stamp Society award and **Gary Hendren** won the award from the Women Exhibitors Group.

Elizabeth Nettles was presented the **Elizabeth C. Pope Medal for Lifetime Contributions to Philately**. This medal is determined by consultation of prior recipients.

Alan Barasch's exhibit of Falkland Islands: The One Penny Reds 1878-1902 was in the Court of Honor (filling in for an exhibit that did not arrive).

Bob Hanson won a Silver-Bronze medal at LINPEX in Lincoln, NE for his "Romancing the Stone."

Further information about Expo is posted on the website at www.StLouisStampExpo.org.

Dues Time

Dues session is now past. In March, there will be a drawing to reward some lucky member(s) who paid their dues on time.

Officers – 2010

PresidentTom Minor (314-645-4451)
Vice-President..... Joe Conti (636-327-5569)
Treasurer..... Gary Hendren (314-576-5261)
SecretaryAlan Barasch (alan@mophil.org)
Recording Secretary Dan Baugher
Librarian & Dispatch Writer Alan Barasch
Buxs Banker Gene Stewart
Recording Secretary Dan Baugher

© 2010 Greater Mound City Stamp Club, Inc

Important Announcement

Communication during the month should be directed to the Secretary at the website or email.

<http://www.GreaterMoundCity.org>

Secretary@GreaterMoundCity.org

Auction

The list is below. Remember – a lot will not open on the floor unless a bid is placed on it during the “look” period.

Lots should be turned in to **Joe Conti**
(papaconti@aol.com) by the time of the breakfast meeting.

Nancy's Show

★ **ST. CHARLES SPRING STAMP SHOW** ★

APRIL 16 & 17, 2010

HEART OF ST. CHARLES BANQUET CENTER
1410 S. 5TH STREET / ST. CHARLES, MO 63301

FRIDAY 10-5 ★ SATURDAY 9-4

20 STAMP DEALERS
FREE PARKING ★ FREE ADMITTANCE
FREE ATTENDANCE PRIZES

PRESENTED BY
STAR STAMPS AND COINS
500 South 5th Street, St. Charles, MO 63301
(636) 949-2203

This card entitles you to a 10% DISCOUNT
on all supplies at Star Stamps (expires May 23, 2010)

St. Charles Center

5th Street

Heart of St. Charles

Riverbluff Dr.

S. Main Street

70

W
S
N
E

Directions:
From I-70, take 5th Street exit right
1st right turn to Heart of St. Charles

Gene's Show

Don't forget the dealer show at the Stratford Inn in Fenton on the 2nd Saturday of each month.



Greater Alound City Stamp Club **Perf-Dispatch**

Volume XVI, Number 4

Established 1884

April, 2010

Where Parkway Central High School
Woodsmill Road

When 4th Monday each month at 8 PM

April Meeting

Guy Gasser will be speaking to us in April about Grading Stamps. Guy has been a member for about 5 years and is quite knowledgeable about US stamps.

Breakfast Club Meeting

The Breakfast group meets the 2nd Monday of the month. The next meeting is **May 10th** at Steak 'n Shake in Chesterfield at 8:30 AM.

2010 SCHEDULE

April 26	Guy Gasser: Grading Stamps
May 24	Alan, Tom, Gary: Topicals
June 28	Clothesline Exhibits
July	No Meeting
August 23	TBA
August 28-29	StampFest
September 27	TBA
October 25	David Straight
November 22	Auction Bux Sale & Elections
December 15	Holiday Party

Address Changes?

If you have moved recently, please update us with your new address. The USPS charges 50¢ to get a forwarding and address correction.

StampFest

Dealer contracts are out and work is already underway for StampFest 2010 to be held in August.

June Meeting

It is not positive at this point but the high school might be closed in June. If that is the case, we will probably move the meeting to a restaurant. Alan is already talking to Sports Page where we have gone in the past.

Our Busy Members

Gary Hendren won a Vermeil medal at TEXPEX 2010 for his exhibit of Snapple bottle caps, titled "Twisted Caps, Twisted Markings." Perhaps it was because the Auxiliary Markings Groups was meeting there.



Philately Around Town

Did you know that there are a number of other stamp clubs around town? There is something for everybody and every taste.

For example, the Monsanto Stamp Club meets the 4th Tuesday most months. Their sole program are 2 auctions at each meeting, one auction of high-value stamps and one of lower values.

The Webster Groves Stamp Club meets the 1st and 3rd Friday each month. Their meeting consists of an auction and a program. Distinguished collectors from around the country present many of Webster's programs. Webster has always attracted the more advanced philatelists in the area.

There is a group of philatelic exhibitors that meet monthly to help each other with exhibiting and write ups of their collections.

Ask one of your officers if you are interested in any of these groups. We are all affiliated with all of them.

Officers – 2010

PresidentTom Minor (314-645-4451)
Vice-President..... Joe Conti (636-327-5569)
Treasurer..... Gary Hendren (314-576-5261)
SecretaryAlan Barasch (alan@mophil.org)
Recording Secretary..... Dan Baugher
Librarian & Dispatch Writer Alan Barasch
Buxs Banker Gene Stewart

© 2010 Greater Mound City Stamp Club, Inc

Starting a New Collection

I have been writing newsletters for stamp clubs for over 25 years. My first was for the **Birmingham Philatelic Society** from 1979 to 1986, when I left Alabama.

My next, was the joint newsletter of the **Razorback Stamp Club** of Rogers and the **Northwest Stamp Club** of Fayetteville, Arkansas. I wrote that one from 1988 until I left Arkansas in 1994 to move to Saint Louis.



All through the time I was writing those newsletters, I had a column going on how to start a new collection and suggestions on what to collect. Now that I have all this space and no auction list, I thought I would pick up where I left off.

Over the years, I have started a number of new collections, played with them for a few years and then set them aside or sold them. I began collecting Tristan da Cunha in about 1974. I built it up as far as I thought I could go, and then traded the whole thing for 2 Falklands stamps.

Deciding what to collect is harder than beginning to collect it. Some of you have heard the story of how I decided to collect the Falkland Islands; but the story bears repeating.

I was showing a college buddy my worldwide collection in many International Albums. He



looked at it in disgust and said, “Real collectors specialize in something and don’t try to collect the world.” I took the Scott Catalog down off the shelf and opened it at random and said, “okay, that one!”

Forty-one years later and I still working on “that one,” and loving every minute of it.

I don’t recommend that everyone open a catalog at random, but it illustrates the point that anything you collect can be enjoyable. I know others that have done exactly the same thing. That is why a good friend collected Travancore-Cochin for many years. A random choice led



him to become the world’s expert on an obscure topic.

I started a collection a number of years ago of computers on stamps. Realizing that this could get out of hand, I limit myself to pictures of actual computer equipment.

I do not want stamps with web addresses (that’s a different collection), space stations or televisions, simply because they look like CRTs. I want punchcards on stamps, reel-to-reel tape, keyboards, and handheld devices.

Important Announcement

Communication during the month should be directed to the Secretary at the website or email.

<http://www.GreaterMoundCity.org>

Secretary@GreaterMoundCity.org

Auction

The list is below. Remember – a lot will not open on the floor unless a bid is placed on it during the “look” period.

Gene’s Show

Don’t forget the dealer show at the Stratford Inn in Fenton on the 2nd Saturday of each month.



Greater Alound City Stamp Club **Perf-Dispatch**

Volume XVI, Number 5

Established 1884

May, 2010

Where Parkway Central High School
Woodsmill Road

When 4th Monday each month at 8 PM

April Meeting

Somebody will be speaking to us in May about topical collecting. Our club is an affiliate chapter of the American Topical Association. We have about 9 members who belong to ATA.

Breakfast Club Meeting

The Breakfast group meets the 2nd Monday of the month. The next meeting is **June 14th** at Steak 'n Shake in Chesterfield at 8:30 AM.

2010 SCHEDULE

May 24 Alan, Tom, or Gary: Topicals
June 28 Clothesline Exhibits
July No Meeting
August 23 TBA
August 28-29 StampFest
September 27 TBA
October 25 David Straight
November 22 Auction Bux Sale & Elections
December 15 Holiday Party

Address Changes?

If you have moved recently, please update us with your new address. The USPS charges 50¢ to get a forwarding and address correction.

StampFest

Dealer contracts are out and work is already underway for StampFest 2010 to be held in August.

June Meeting

It is not positive at this point but the high school might be closed in June. If that is the case, we will probably move the meeting to a restaurant. Alan has made arrangements with Sports Page where we have gone in the past.

Our Busy Members

Gary Hendren won a Silver medal at ROMPEX 2010 for his exhibit of Rural Free Delivery and a Gold for St. Louis Streetcars.

Alan Barasch spoke to the Columbia (MO) Philatelic Society on Missouri People and Places on Stamps on May 18th.

Scott Ward received a Vermeil medal for his exhibit of Parcel Post at ROMPEX.



Our member, **Betty Nettles** was awarded the Elizabeth Pope Award for Lifetime Contributions to Philately. She is in the middle between David Straight and presenter, Cheryl Ganz. Betty is the 10th annual winner. The award is made at Saint Louis Stamp Expo.

Philately Around Town

Have you ever considered exhibiting your collection? We plan to have 40 frames set up at StampFest and a real APS accredited judge.

The **St. Louis Bears Exhibiting Group** uses StampFest as a venue to try out new exhibits. Some of the greatest exhibits in town have made their first showing there.

Sorry

I noticed after printing 40 copies that some pictures had shifted in last month's Perf Dispatch.

Officers – 2010

PresidentTom Minor (314-645-4451)
Vice-President..... Joe Conti (636-327-5569)
Treasurer..... Gary Hendren (314-576-5261)
SecretaryAlan Barasch (alan@mophil.org)
Recording Secretary..... Dan Baugher
Librarian & Dispatch Writer Alan Barasch
Buxs Banker Gene Stewart

© 2010 Greater Mound City Stamp Club, Inc

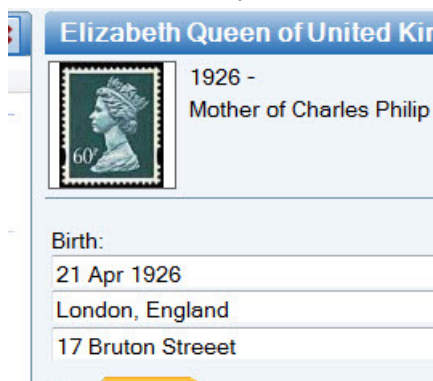
Starting a New Collection

Once upon a time, I had this crazy idea to collect the Descendants of Queen Victoria on Stamps. Like so many other collections, it became an obsession.

Starting this collection was somewhat different from any collection I had begun. First I had to find out who the descendants were; before I could determine if they were pictured on a stamp.

I came into this one sort of backwards. I had learned in school that the interlocking families of the crowned heads of Europe had contributed to the beginning of World War I. I wanted to see it for myself, so I decided to enter just enough information into a genealogy program so I could see what the shouting was about.

Sometime around 1992, I published my findings in a GEDCOM file; a text-based genealogy sharing format. The original was posted on an old BBS (bulletin board) in the days before Internet. I just did a search and found 18,700 references to my ROYAL92.GED.



Once I had software that would allow me to attach a picture (of a stamp), the real obsession took over.

I started scouring the catalogs looking

for the people that were in the database. Soon I had a list to start with and went on a buying spree. I am sure there are a bunch of dealers that loved my choices.

Since I knew that one day I would want to exhibit this thing, I looked for the most interesting examples of stamps for the people in this new collection.

Important Announcement

Communication during the month should be directed to the Secretary at the website or email.

<http://www.GreaterMoundCity.org>

Secretary@GreaterMoundCity.org

Auction

The list is below. Remember – a lot will not open on the floor unless a bid is placed on it during the “look” period.

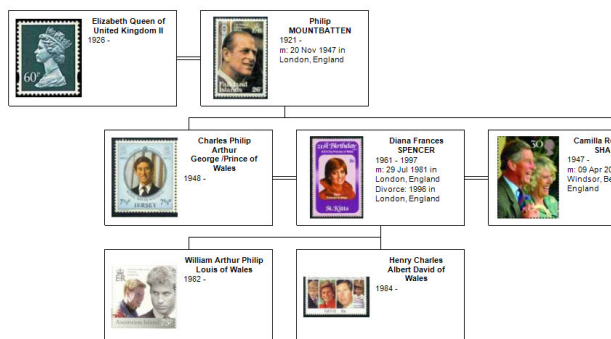
Gene's Show

Don't forget the dealer show at the Stratford Inn in Fenton on the 2nd Saturday of each month.

There is a very good reason that George V is illustrated by acquiring the 1929 Postal Union Congress stamp. First of all, it is an extremely good example of the engraver's art. It is a great portrait of the king and finally, it shows that I am really serious about the collection.

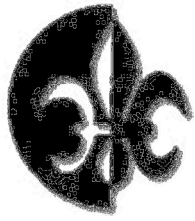


My friend, Janet Klug suggested the title of my exhibit. It is “Vicky's Kids.” The exhibit has been shown a couple times at StampFest. I need to



work on it a bit more; I want to be able to show all the descendant charts across multiple exhibit pages.

I bet you are wondering if I ever learned what I set out to do. Much later, after I had researched and entered a few thousand – yes, thousand – names, I had my answer. Everybody sitting on a throne in Europe is related to everybody else.



Greater Around City Stamp Club Perf-Dispatch

Volume XVI, Number 6

Established 1884

June, 2010

Where Parkway Central High School
Woodsmill Road

When 4th Monday each month at 8 PM

June Meeting

School's out for the Summer! And GMCSC is meeting at our favorite alternate location; **Sports Page Bar & Grill**, 13431 Olive Boulevard in Chesterfield. Since they are giving us the space free, we are expected to buy some food. Sports Page has some of the best burgers around and we are never disappointed.

Arrive around **6:30 to 7:00 for dinner** or 8:00 if you are coming only for the meeting. We will have the entire room to the left of the bar with plenty of space for our clothesline exhibits and auction lots.

Our program in June is **Clothesline Exhibits**. They will be described in more detail on the back page. The hope is that all the Clothesline pages will be delivered to StampFest to be displayed in one or more frames; telling the whole world, what our members collect. Prizes will be awarded for the pages deemed the best by your peers.

Breakfast Club Meeting

The Breakfast group meets the 2nd Monday of the month. The next meeting is **July 12th** at Steak 'n Shake in Chesterfield at 8:30 AM.

2010 SCHEDULE

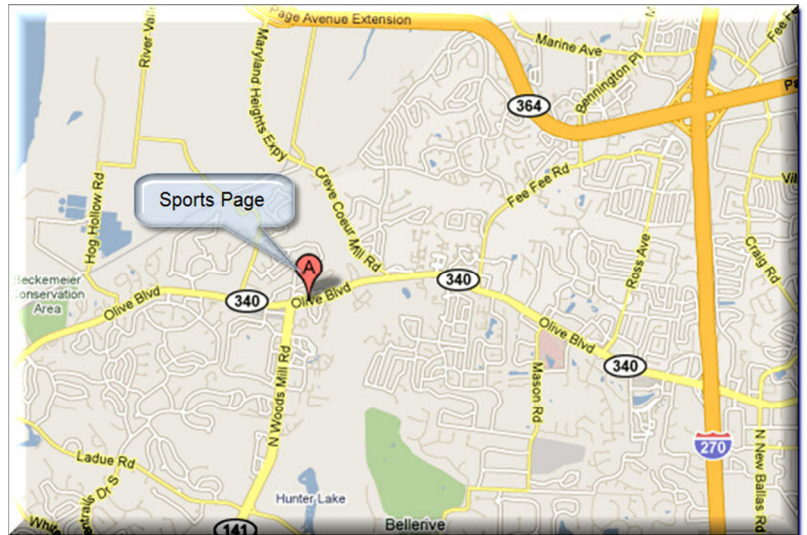
June 28.....	Clothesline Exhibits
July.....	No Meeting
August 23.....	TBA
August 28-29.....	StampFest
September 27.....	TBA
October 25.....	David Straight
November 22.....	Auction Bux Sale & Elections
December 15.....	Holiday Party

Address Changes?

If you have moved recently, please update us with your new address. The USPS charges 50¢ to get a forwarding and address correction.

StampFest

Dealer contracts are out and work is already underway for StampFest 2010 to be held in



August.

Our Busy Members

Gary Hendren and **T.G. Rehkop** are participating in Summer Seminar at APS in Bellefonte. This year they are teaching the course on "Precancels".

Alan Barasch is speaking to the Collectors Club of Chicago on July 8th about "19th Century Falkland Islands".



Figure 1: Considered one of the prettiest stamps ever issued, the Canada "Blue Nose"

Officers – 2010

President Tom Minor (314-645-4451)
 Vice-President..... Joe Conti (636-327-5569)
 Treasurer..... Gary Hendren (314-576-5261)
 Secretary Alan Barasch (alan@mophil.org)
 Recording Secretary..... Dan Baugher
 Librarian & Dispatch Writer Alan Barasch
 Buxs Banker Gene Stewart

© 2010 Greater Mound City Stamp Club, Inc

Important Announcement

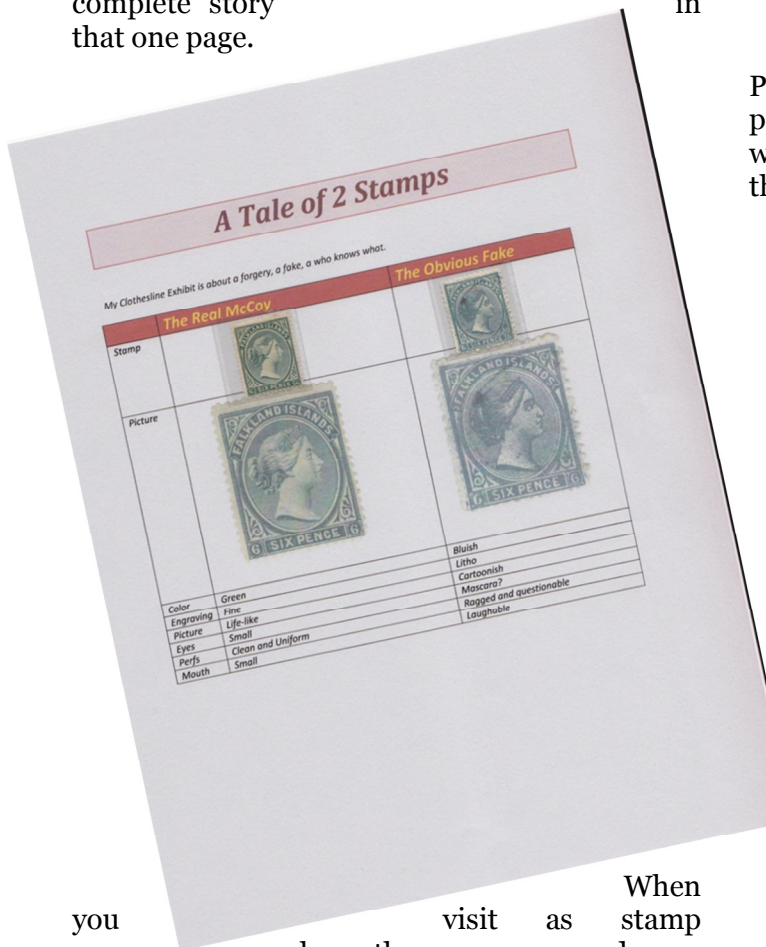
Communication during the month should be directed to the Secretary at the website or email.

<http://www.GreaterMoundCity.org>

Secretary@GreaterMoundCity.org

What is a Clothesline Exhibit?

Once a year, we all strive to bring in one page written up as an exhibit. The object is to tell a complete story in that one page.



When you visit as stamp show, there are rows and rows of fine exhibits, most of which are between 16 and 160 pages. The idea is to tell a unified story in the context of the pages presented.

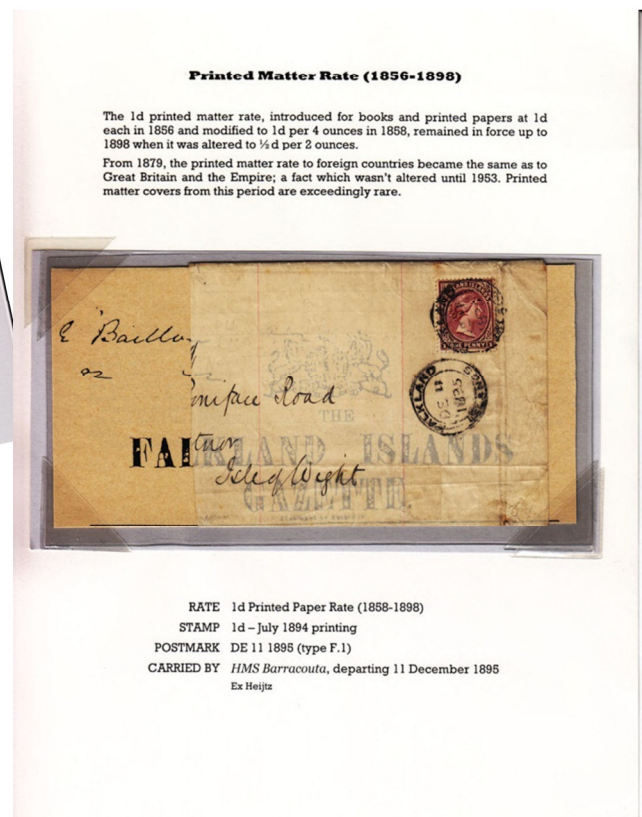
With clothesline exhibits, you don't have to mount many pages; just one. The one page could have a single stamp, many stamps, a single cover or some combination. But it must have some writing so that you do not have to stand next to it to convey the message.

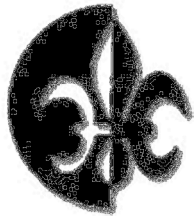
Illustrated on this page are a few examples that your editor has done over the years. He will stay out of the clothesline competition since he has been exhibiting nationally for over 25 years.

Gene's Show

Don't forget the dealer show at the Stratford Inn in Fenton on the 2nd Saturday of each month.

Perhaps after getting your feet wet doing a one page exhibit, you might try your hand a filling a whole 16-page frame at the show. From there, the sky (and 10 frames) is the limit.





Greater Mound City Stamp Club **Perf-Dispatch**

Volume XVI, Number 7

Established 1884

August, 2010

Where Parkway Central High School
Woodsmill Road

When 4th Monday each month at 8 PM

August Meeting

Wasn't dinner at Sports Page fun in June? It is great to get so many fine collectors around the dinner table to talk about their favorite subject.

Our president, **Thomas Minor** is presenting Poster Stamps of St. Louis. He has been adding to his collection and has lots of interesting things to show us.

Breakfast Club Meeting

The Breakfast group meets the 2nd Monday of the month. The next meeting is September 13th at Steak 'n Shake in Chesterfield at 8:30 AM.

2010 SCHEDULE

August 23.....	Saint Louis Poster Stamps
August 28-29.....	StampFest
September 27	TBA
October 25.....	David Straight
November 22.....	Auction Bux Sale & Elections
December 15	Holiday Party

StampFest

StampFest 2010 convenes on Saturday, August 28 at 10AM and runs through Sunday at 4PM.

We are again in the gymnasium just to the north of the main school entrance.

Setup will be Friday night at 5PM. If you have already volunteered for setup, please plan to be there.

We also need help with manning the club table, accepting entry forms, and handing out literature. Shifts can be as little as one hour. The snack bar probably needs some help and Joe will be taking names.

Annual BBQ Party

When we shut down the show for the night on Saturday at 5PM, all members and their spouses are invited to our annual BBQ.

This is an excellent time to sit down with our dealers; who look forward to this part of the day's activities.

The meat for the BBQ has been ordered from "Charlotte's Rib" in Chesterfield along with a gallon of coleslaw.

Drinks are provided but our members are expected to provide side dishes, salads, and dessert. See the sign-up sheets at the August 23rd meeting.

For more information about StampFest 2010, visit the website at
<http://StampFest.GreaterMoundCity.org>

Also, see the map on the back of this page.

Our Busy Members

T. G. Rehkop has been elected to a 2-year term as President of the Precancel Stamp Society. **Dan Baugher** was elected Treasurer of the Perfins Club.

Alan Barasch is speaking to the Falkland Islands Philatelic Study Group on August 14th about "Falkland Islands Flyspecks" at StampShow in Richmond, Virginia.

Extra Supplies?

The guys that make up packets for the Youth programs are looking for used glassines and stock sheets. They use these for the school programs and for stamp show give-aways. Bring them to meetings for us to pass along.

Errors are here so we have a reason to interact!

Officers – 2010

President	Tom Minor (314-645-4451)
Vice-President.....	Joe Conti (636-327-5569)
Treasurer.....	Gary Hendren (314-576-5261)
Secretary	Alan Barasch (alan@mophil.org)
Recording Secretary	Dan Baugher
Librarian & Dispatch Writer	Alan Barasch
Buxs Banker	Gene Stewart

© 2010 Greater Mound City Stamp Club, Inc

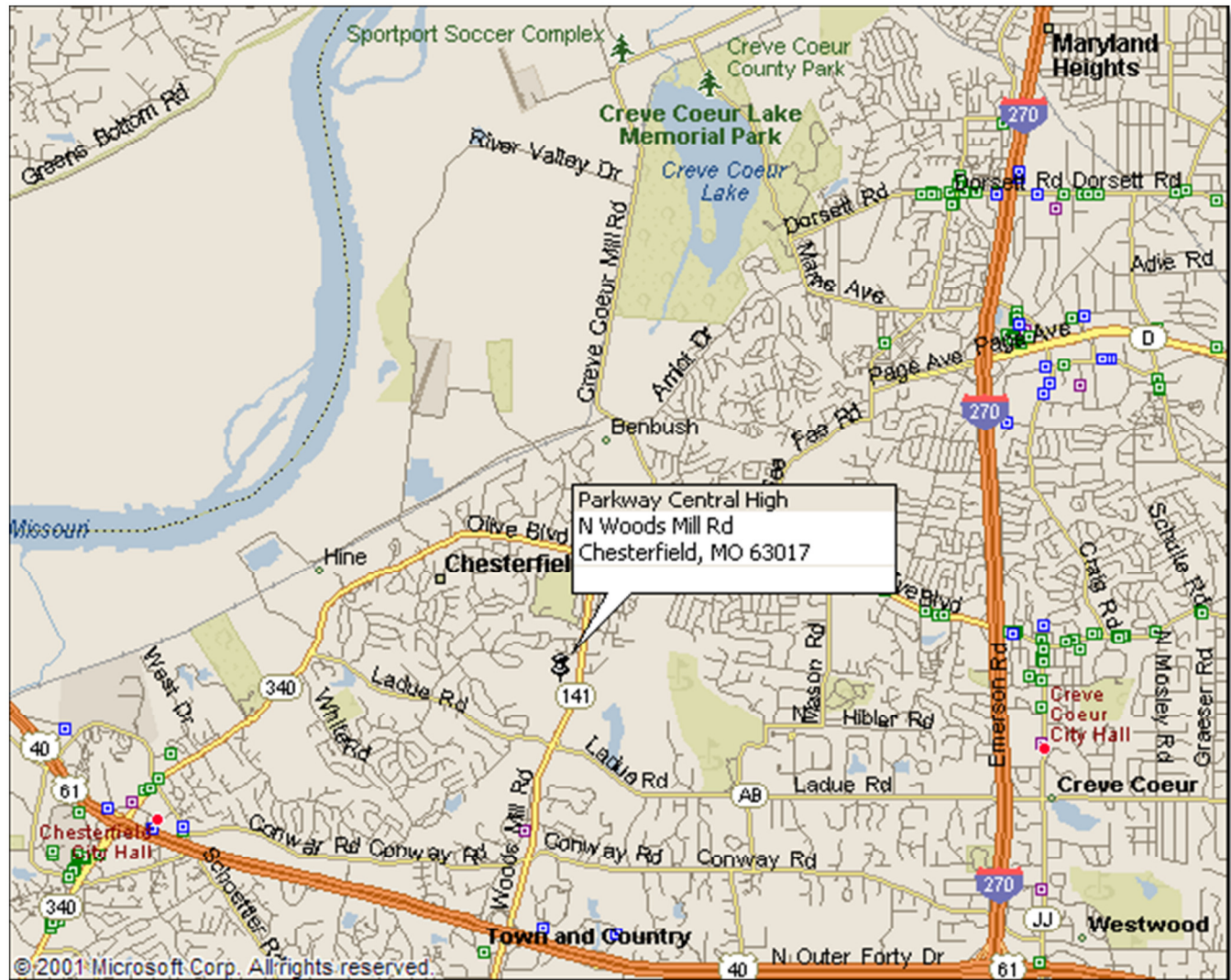
Communication during the month should be directed to the Secretary at the website or email.

<http://www.GreaterMoundCity.org>

Secretary@GreaterMoundCity.org

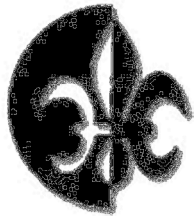
Gene's Show

Don't forget the dealer show at the Stratford Inn in Fenton on the 2nd Saturday of each month.



There is road construction across from the high school this year but should not affect the show in any way.

Note to online readers: The newsletter was mailed from StampShow 2010 in Richmond, VA bearing the new Winslow Homer stamp and received a First Day cancel.



Greater Alound City Stamp Club **Perf-Dispatch**

Volume XVI, Number 8

St. Louis' oldest Stamp Club Established 1884

September, 2010

Where Parkway Central High School
369 North Woods Mill Road

When 4th Monday each month at 8 PM

setup. Setup was completed in less than two hours with 2 crews setting up exhibit frames.

September Meeting

In September, **Gene Stewart** will regale us with an interesting program on mail to the German States in a program titled, "Who's Got the Mail."

Coming up in future months, in October, we have our annual presentation by David Straight on extreme back-of-the-book philately.

Our Auction Bux sale occurs in November. All those bux you have accumulated during the years are worth something in our sale.

Finally, we close out the year with our Holiday Party in December. You will note that it is a little earlier than previous. The Orlando Gardens where we have dined for a number of years has closed. We are moving to Syberg's on Dorsett at I-270.

Breakfast Club Meeting

The Breakfast group meets the 2nd Monday of the month. The next meeting is October 11th at Steak 'n Shake @ Olive and Woods Mill Roads at 8:30 AM.

2010 SCHEDULE

September 27 Who's Got the Mail
October 10.....Officers Board Meeting
October 25..... Gatherin' the News
November 22.....Auction Bux Sale & Elections
December 1 Holiday Party

StampFest

StampFest 2010 was a success. Final figures are not in but from preliminary numbers, it looks great.

Looking at the sign-in sheets, it appears that most of our members were there one or both days. In addition, we had the most ever help for

Newsletter Enclosures

There are enclosures this month from Confluence Magazine; published by Lindenwood University and featuring articles on local topics of interest. Our own, **David Straight** is a regular contributor on philatelic topics. Also, this month there is a flyer for Saint Charles Fall Stamp Show put on by our member, **Nancy Moelling**.

Our Officers

On October 10th, our officers will hold their annual meeting to discuss the year ahead.

If you would like to be included in the list of programs for next year, please make your wishes known.

Also, if you have any desire to serve our club as an officer, please step forward. Our present leadership has served virtually unchanged for the last ten years. Perhaps you could bring new ideas to the table.

Extra Supplies?

Scott Ward and **Ken Lucas** who make up packets for the Youth programs are looking for used glassines and stock sheets. They use these for the school programs and for stamp show giveaways. Bring them to meetings for us to pass along.

Member Number

When you look at the mailing envelope that your newsletter comes in, there is a box just below the corner card. The first line indicates when your membership expires; 12/31/year and the second line is your member number.

Thru 2010
0319

Errors are here so we have a reason to interact!

Officers – 2010

PresidentTom Minor (314-645-4451)
Vice-President..... Joe Conti (636-327-5569)
Treasurer..... Gary Hendren (314-576-5261)
SecretaryAlan Barasch (alan@mophil.org)
Recording Secretary Dan Baugher
Librarian & Dispatch Writer Alan Barasch
Buxs Banker Gene Stewart

© 2010 Greater Mound City Stamp Club, Inc

<http://www.GreaterMoundCity.org>

Secretary@GreaterMoundCity.org

Gene's Show

Don't forget the dealer show at the Stratford Inn in Fenton on the 2nd Saturday of each month from 10 to 4.

Communication during the month should be directed to the Secretary at the website or email.

There is road construction across from the high school this year but should not affect the meetings in any way.

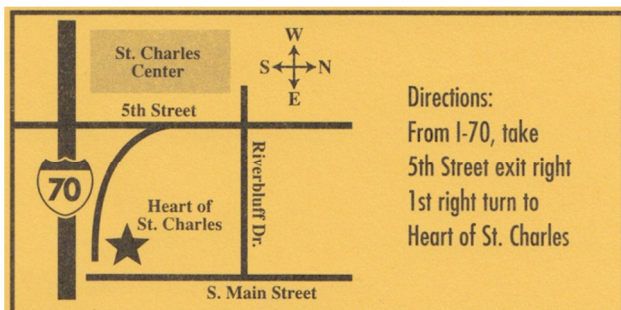
Haven't been to a meeting lately? Can't find the right door?

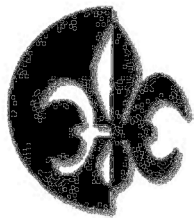
Here is a quick map to help you find your way. We meet at the furthest area of the school from where we

hold the show. Take the driveway all the way around to the South. There is a small parking lot tucked in and larger lots right outside of the area.

If you come in through the school's main entrance, follow the steps or ramp down, walk past the lunchrooms, and keep going down to a long hall. We should be at the end.

If all else fails, dial 314-608-6088 and someone will come looking for you.





Greater Alound City Stamp Club **Perf-Dispatch**

Volume XVI, Number 9

Saint Louis' oldest Stamp Club Established 1884

October, 2010

Where Parkway Central High School
369 North Woods Mill Road

When 4th Monday each month at 8 PM

October Meeting

Coming up in future months, in October, we have our annual presentation by **David Straight** on "Gatherin' the News".

Balance of the Year

Our Auction Bux sale occurs in November. All those bux you have accumulated during the years are worth something in our sale.

Finally, we close out the year with our Holiday Party in December. You will note that it is a lot earlier than previous.

When we went to make changes based on the vote at the September meeting, the good dates had already been taken. The Orlando Gardens where we have dined for a number of years has closed. We are moving to **Syberg's** on Dorsett at I-270.

Breakfast Club Meeting

The Breakfast group meets the 2nd Monday of the month. The next meeting is November 8th at Steak 'n Shake @ Olive and Woods Mill Roads at 8:30 AM.

Thankfully, the election season will be over and we can get back to talking about stamps instead of politics. I understand that some members have quit coming to the Breakfast Club because they were shouted down over their views. Remember, philately is a hobby!

2010 SCHEDULE

October 22-23.....Stamp Show – St. Charles
October 25.....Gatherin' the News
November 22.....Auction Bux Sale & Elections
December 2 Holiday Party
January 24.....

Auction Bux Sale

From Gary: I have about 70 lots for the "auction bux" auction, but if anyone would like to bring any additional items to the October meeting for inclusion and for credit toward additional "bucks". No credit will be given after the Oct meeting. Should you not be at the meeting, call Gary Hendren (314.576.5261) or email at g2hslm@msn.com to give him a description of the lot(s) catalog value or value, and he'll add to the list will be printed up, and you can bring the items to the November meeting.

Extra Supplies?

Scott Ward and **Ken Lucas** who make up packets for the Youth programs are looking for used glassines and stock sheets. They use these for the school programs and for stamp show giveaways. Bring them to meetings for us to pass along.

Member Number

When you look at the mailing envelope that your newsletter comes in, there is a box just below the corner card. The first line indicates when your membership expires; 12/31/year and the second line is your member number.

Thru 2010 0319

Next Year

Several members stepped up and we have excellent programs planned for 2011. In addition, we have scheduled two speakers from the greater St. Louis philatelic community to speak.

Errors are here so we have a reason to interact!

PresidentTom Minor (314-645-4451)
Vice-President..... Joe Conti (636-327-5569)
Treasurer..... Gary Hendren (314-576-5261)
Secretary Alan Barasch (314-608-6088)
Recording Secretary..... Dan Baugher
Librarian & Dispatch Writer Alan Barasch
Buxs Banker..... Gene Stewart

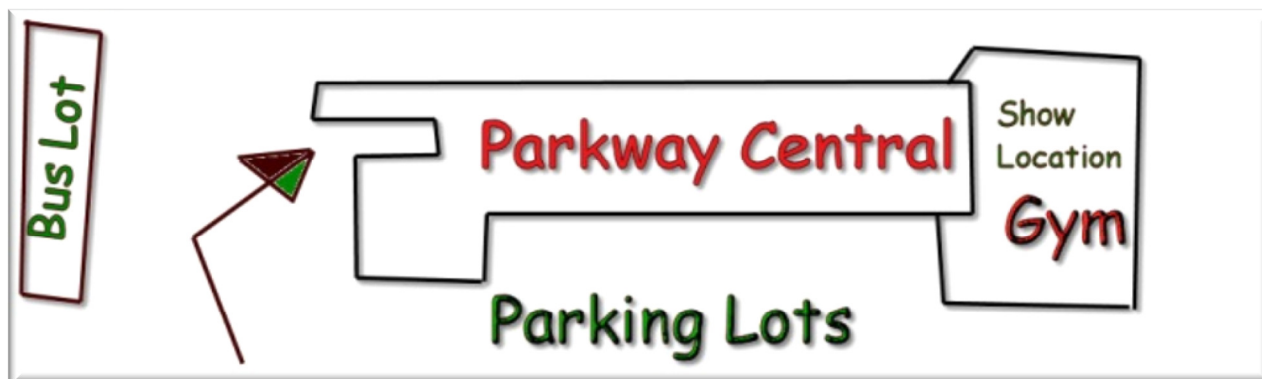
© 2010 Greater Mound City Stamp Club, Inc

<http://www.GreaterMoundCity.org>

Secretary@GreaterMoundCity.org

Gene's Show

Don't forget the dealer show at the Stratford Inn in Fenton on the 2nd Saturday of each month from 10 to 4.



Communication during the month should be directed to the Secretary at the website or email.

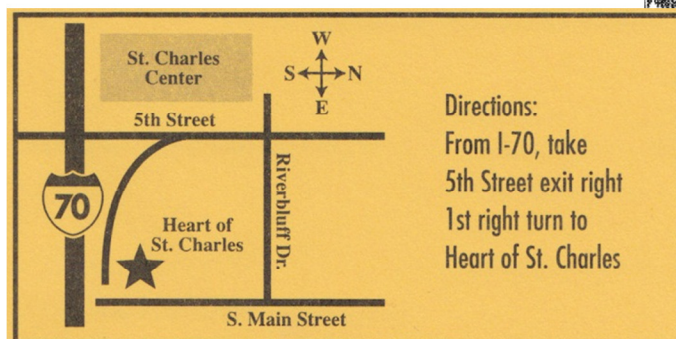
There is road construction across from the high school this year but should not affect the meetings in any way. Also, there is a new building going up that will affect where they stick us for a few months.

Haven't been to a meeting lately? Can't find the right door?

We added three or four members at the show and others continue to find us.

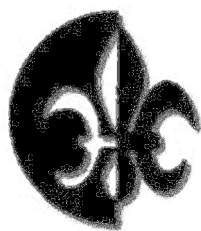
Here is a quick map to help you find your way. We meet at the furthest area of the school from where we hold the show. Take the driveway all the way around to the South. There is a small parking lot tucked in and larger lots right outside of the area.

If you come in through the school's main entrance, follow the steps or ramp down, walk past the lunchrooms, and keep going



down to a long hall. We should be at the end.

If all else fails, dial 314-608-6088 and someone will come looking for you.



Greater Alound City Stamp Club **Perf-Dispatch**

Volume XVI Number 9

Since 1884

November, 2010

Where Parkway Central High School
South end of the building
Woodsmill Road
When 4th Monday each month at 8 PM

NOVEMBER MEETING

There are 2 orders of business in November, the first is election of officers. At the annual board meeting to discuss meeting topics, the current slate of officers expressed a desire to serve another term.

The second order of business is our annual Auction Bux sale.

Breakfast Club Meeting

The Breakfast group meets the 2nd Monday of the month. The next meeting is December 13th at **Steak 'n Shake** near Olive and Woods Mill Road at 8:30 AM.

2010-2011 Schedule

November 22.....Auction Bux & Election
Thursday, December 2..... Holiday Party
January 24, 2011Paul Miles - Gold
February 28..... Scott Ward – Youth Programs
March 28.....Revenue Stamped Paper

SHOWS

Gene Stewart has a bourse the 2nd Saturday of each month at the Stratford Inn from 10AM to 4PM across from the ruins of the Chrysler Plant in Fenton. The Holiday Party show will be December 11th.

AUCTION BUX

You remember the Auction Bux that you register every month for doing things for the good of philately. Well, in November we have a way to spend them.

Arrive early to look at the lots! Turn in a list of 3 lots that you would like to see sold early in the auction while your money is available.

Other lots will be available if the need arises, i.e. there are people with money left.

There will be a chance before the auction begins to earn some “bux” on Monday. We will have interesting trivia games to get the ball rolling.

Thanks to the following donors for making this possible: GMCSC, **Dan Baugher, Roger Grider, Gary Hendren, David Straight, Ken Paulsen, Hollis Sisk, Tom Minor, Star Stamps & More** and others.

Our annual sale includes a lot of donated material. There are usually some books, stamps, supplies and other philatelic trash.

We will have some contests to earn extra Bux before we begin the sale. See you there!

Holiday Party

Our annual Holiday Party will commence at **6:30 PM** on Thursday, December 2nd with cocktails and dinner around 7:15. It will be at the **Syberg's on Dorsett** at 2430 Old Dorsett Road (just East of the intersection of Dorsett and I-270).

Our master and mistress of ceremonies will have their usual games and puzzles to challenge and delight.

Special awards for the most correct answers.

Send party reservations to **Gary Hendren**, 12737 Glenage, Maryland Heights, MO 63043 or email to G2HSLM@MSN.COM by Monday, November 29 to assure a place at the table

See *reservation form* on page 4.

Officers – 2010

President for Life	Tom Minor (314-645-4451)
Vice-President.....	Joe Conti (636-327-5569)
Treasurer.....	Gary Hendren (314-576-5261)
Secretary	Alan Barasch (314-608-6088)
Recording Secretary	Dan Baugher
Buxs Banker	Gene Stewart
Dispatch Editor & Librarian	Alan Barasch

Important Announcement

If there is a speaker that you would like us to get, perhaps you can facilitate getting him.

Follow links on this page for information about other local clubs, shows, and maps to the shows.

Auction Bux Sale

Lot #	Country	Description	CV/Est	Hammer	Donor
STAMPS					
1		Foreign in Glassines	\$ 20.00		Teppe
2	U.S.	Sc #2771-74 Pl Blk 4, MNH, Face 1.16	\$ 2.20		GMC
3	U.S.	Sc #1924 Blk 4, MH, Face .72	\$ 1.50		GMC
4	U.S.	Sc #2267,69,72,73,74 + damaged #2272, Face 1.32	\$ 4.80		GMC
5	U.S.	11 MH Stamps, Face 1.56	\$ 3.15		GMC
6	U.S.	10 MH Stamps, Face 1.50	\$ 3.00		GMC
7	U.S.	Sc #785-94, M/U, Face .20	\$ 2.80		GMC
8	U.S.	Sc #778, 797, M/U, 2 Souv. Sheets	\$ 2.15		GMC
9	U.S.	Sc #740-49, MH, National Park, Perf 11, Face .55	\$ 9.75		GMC
10	U.S.	Sc #756-65, Imperf Set	\$ 14.45		GMC
11	U.S.	Sc #1337,1345-1354, MH, Face .66	\$ 2.90		GMC
12	U.S.	Sc # 1254-7, 2 ea, MH, Face .40	\$ 2.10		GMC
13	U.S.	Sc # CE1-2, MH,	\$ 1.05		GMC
14	U.S.	Sc #256, VF, MH	\$ 175.00		GMC
15	U.S.	Sc #2556-7, MNH, Blk of 4/Number	\$ 0.80		GMC
16	U.S.	Sc #3475A, MNH, Plate Number V46 Strip of 5, Washington	\$ 3.50		GMC
17	U.S.	Sc #4001, MNH, Plate Number V1111 Strip of 5, Butterfly	\$ 3.75		GMC
18	U.S.	Sc #4001, MNH, Plate Number V1111 Strip of 5, Butterfly	\$ 3.75		GMC
19	U.S.	\$2.34 Face Includes Many Plate Blocks			GMC
20	U.S.	\$2.38 Face Includes Many Plate Blocks			GMC
21	U.S.	\$3.00 Face Includes Many Plate Blocks			GMC
22	U.S.	? Face + Older			GMC
23	U.S.	Bureau Precancels			GH
24	U.S.	Boys Town Cinderellas	?		TM
25	U.S.	Sc #RW 45, 1978 U.S. Duck Stamp	\$ 6.00		GMC
26	U.S.	Sc #RW 50, 1983 U.S. Duck Stamp	\$ 7.00		GMC
27	U.S.	1973 MO Trout Stamp	?		GMC
28	U.S.	1974 MO Trout Stamp	?		GMC
29	U.S.	1975 MO Trout Stamp	?		GMC
30	Ecuador	Sc #657,659(2),660	\$ 2.60		GMC
31	Indonesia		?		GMC
32	Japan	32 Used Stamps	?		PMCC
33	Malaysia		?		GMC
34	Paraguay		?		GMC
35	Romania	12 M/U Stamps	?		GH
36	Russia	Sc #3111, SS, Used	?		GMC
COVERS					
37	U.S.	60 U.S. Covers	\$ 10.00		GMC
38		60 Foreign Postcards	\$ 10.00		GMC
39	U.S.	2 Gold Replica Covers	\$ 4.00		GMC
40	British	13 British Related Covers	\$ 25.00		GMC

Lot #	Country	Description	CV/Est	Hammer	Donor
41	U.S.	60 Norman Rockwell Covers	\$ 60.00		GMC
42	U.S.	50 Constitution Covers	\$ 50.00		GMC
43		4 China/Great Britain FDC's	\$ 4.00		GMC
44	U.S.	New Orleans Saints Super Bowl 44 Champions Cover	\$ 10.00		?
45	U.S.	Saints/Colts Super Bowl 44 Cover	\$ 10.00		?
46	U.S.	4 McDonnell Coin & Stamp Club Covers	\$ 5.00		JC
47	U.S.	3 McDonnell Coin & Stamp Club Covers (Duplicate of lot #42)	\$ 4.00		JC
48	U.S.	4 St. Louis FDCs, #1426,#1780,UC32a,UX97	\$ 10.00		GH
49	Germany	16 Old Covers	\$ 15.00		GMC
50	Brazil	70 Old Covers	\$ 30.00		GMC
51	U.S.	40 U.S. Covers, No Missouri	\$ 30.00		GMC
LITERATURE					
52		H.R. Harmer Brit. Commonwealth + Foreign Auction Catalog, 10/2008	\$ 5.00		GMC
53		Linn's Who's Who on U.S. Stamps-Thomas	\$ 10.00		SSM
54		Linn's World Stamp Almanac-1977	\$ 5.00		SSM
55		Commemorative Postage Stamps of the U.S., Ralph Kimble, 1933, HB	\$ 10.00		HS
56		Fun & Profit in Stamp Collecting, Herman Herst, JR., 1962, SB	\$ 7.50		HS
57		How To Collect Stamps, Ralph Kimble, 1936, HB	\$ 10.00		HS
58		Nassau Street, Herman Herst, JR, 1960, HB, 1st Ed.	\$ 10.00		HS
59		Stamp Collecting, Stanley Phillips, 6th Ed., Year?, HB	\$ 10.00		HS
60		Scott Catalogue C-F, 2005	\$ 5.00		GH
61		UPSS 2000 U.S. Postal Card Catalog	\$ 20.00		DS
SUPPLIES					
62		1000 Supersafe Hinges	\$ 3.50		GMC
63		1000 Supersafe Hinges	\$ 3.50		GMC
64		Manilla Stock Pages, 10	\$ 2.50		RG
65		Watermark Tray	\$ 1.50		GMC
66		Unitrade Perf. Gauge	\$ 1.50		GMC
67		903-4 1/2" Spade Stamp Tongs	\$ 4.25		GMC
68		907-6" Tilted Spade Stamp Tongs	\$ 8.50		GMC
69		40-40/25(J) Showgard Mounts (Horiz. Commems.)	\$ 3.85		GMC
70		40-25/40 (JV) Showgard Mounts (Vert. Commems.)	\$ 3.85		GMC
71		30-52/36 (DH) Showgard Mounts (Duck Stamp)	\$ 3.25		GMC
72		40-22/25 (E) Showgard Mounts (Vert. Defin.)	\$ 3.85		GMC
73		40-25/22 (EH) Showgard Mounts (Horiz. Defin.)	\$ 4.50		GMC
74		40-31/31 (S) Showgard Mounts (Square Commems.)	\$ 5.00		GMC
75		Linn's Multi-Gauge Perf. Gauge	\$ 7.00		GMC
76		Pack of 100 Glassine Envelopes	\$ 1.00		GH
77		Pack of 100 Postcard Sleeves-Classic	\$ 5.00		GMC
78		Pack of 100 Postcard Sleeves-Ultra Pro	\$ 5.00		GMC
79		Pack of 100 FDC (#6 Envelope) Sleeves	\$ 5.00		GMC
80		Pack of 100 #10 Envelope Sleeves	\$ 6.00		GMC
81		5 Vario Pages Size 8S (Black)	\$ 4.50		GMC
82		5 Vario Pages Size 8S (Black)	\$ 4.50		GMC
83		5 Vario Pages Size 2C (Clear)	\$ 4.50		GMC
84		All American Stamp Album Binder-Minkus	\$ 10.00		SSM

Lot #	Country	Description	CV/Est	Hammer	Donor
85		Red FDC Cover Holder	\$ 10.00		SSM
86		Blue FDC Cover Holder	\$ 10.00		SSM
87		Maroon FDC Cover Holder	\$ 10.00		SSM
88		Green European Cover Holder	\$ 10.00		SSM
89		1" 3-Ring Binder	\$ 2.00		SSM
90		White Ace Mint Sheet File #1	\$ 5.00		SSM
91		White Ace Mint Sheet File #2	\$ 5.00		SSM
92		20 #10 Envelope holders?	\$ 5.00		GMC
93		White 1" Binder with a few Inserts	\$ 2.00		HS
94		Red 2" Binder with 20+ Inserts	\$ 3.00		HS
95		Green 2" Binder with a few Inserts	\$ 2.00		HS
96		About 60 Small Envelopes +14 Smaller Eagle Stamp Envelopes	?		GMC
97		Old Cigar Box with 10 Chesterfield Tins, 1 Small Cigar Tin, + 2 others	\$ 50.00		GMC
MISCELLANEOUS					
98	U.S.	Souv. Card, Battle of San Juan Hill	?		GMC
99	--	Small Plastic Box with dividers (For Hinges)	\$ 2.00		MPC
100	U.S.	Stamp Decoder	\$ 4.95		BH
101	U.N.	Postal Stationery Assortment, 10 Pieces + 2 FDC's	\$ 12.00		GMC
102	U.N.	Cinderella, 84c Face, World, US, St. Louis, Chesterfield Famous Philatelist	\$ 1,000.00		GH
103	U.S.	1923 St. Louis postcard, Mendonsa, "House Fumigation", Dept. of Health	\$ 3.00		GMC
104	U.S.	Library Books, 20c stamp, Pendant	\$ 10.00		DLS
105	U.S.	APS Fold-Up Book Reading Light-Cute	\$ 10.00		DLS
106	U.S.	Newspaper Block Featuring a U.S. Stamp	?		DS
107	U.S.	Great Book of Combat Aircraft, by Paolo Matricardi, 2007	\$ 25.00		GH
108	U.S.	Time, Abraham Lincoln-An Illustrated History of his Life & Times, 2009	\$ 12.00		GH
109	U.S.	Time, D-Day, 2004 Reissue	\$ 12.00		GH
110	U.S.	Obama the Forty-Fourth President	\$ 7.00		AN
111		Small Plaque with a signed Ken Dayley Baseball Card	?		GH

HOLIDAY PARTY RESERVATIONS

Names			
# of People		@ \$15.00 each	Total: