

1993-01 GSLSC Newsletter	2
1993-02 GSLSC Newsletter	4
1993-03-GSLSC Newsletter	6
1993-04-GSLSC Newsletter	8
1993-05-GSLSC Newsletter	10
1993-06-GSLSC Newsletter	12

THE GREATER ST. LOUIS STAMP CLUB

NEXT MEETING: JANUARY 25, 1992

PLACE: PARKWAY CENTRAL HIGH SCHOOL

JUNIOR CLUB: 6:30 P.M.

BUSINESS PROGRAM: 8:00 P.M.

JUNIOR CLUB: Since we didn't get to the Scavenger Hunt sheet passed out at the October meeting we will go over those sheets to see how well you did in finding the various kinds of stamps. Also bring any stamp albums, tools, or other stamp related items you might have received as recent gifts and give us a brief explanation of the item(s).

PROGRAM: David Kols of Regency Stamps will present a slide program on the Stamps of Lundy Island. This program has been well received at the Mound City and Webster Clubs and all members are urged to get the new year off to a rousing start.

LIBRARY: If you would like a book from the Club's library contact Vic Silver, 829-0332, or Gary Hendren, 576-5261, prior to the meeting so that he can bring the item to you. .

CHRISTMAS DINNER: The dinner was well attended with 38 members, spouses, and guests in attendance.

AUCTION: Bring your items to sell, and get there early enough to view the items for bid.

1993 OFFICERS: The 1993 officers will assume their duties starting with the January meeting as follows: President - Jerry Walterscheid, Vice President - David Bledsoe, Secretary - Jim Stewart, and Treasurer - Gary Hendren.

1993????? DUES: Individual dues remain at \$5.00 and Family memberships are \$6.00. *Check your mailing label to see you are paid through 1993.* Send to Treasurer Gary Hendren, 12737 Glenage, Maryland Heights, MO 63043. If your mailing label is incorrect, please inform Gary before the next mailing.

NUMBERS IN THE NEWS:

1992 paid memberships.....47 individual
5 family

November meeting attendance..20

Junior attendance.....18

BOURSES:

January 24	Metro East Stamp & Postcard Show at Ramada Inn, I-64 & ILL Rt 159
February 14	Drury Inn, Bowles Ave & I-44, 10 am - 4:30 pm
February 20	St. Aloysius Gonzaga School, 5628 N. Magnolia, 10am - 5:00pm
March 6-7	SCGSL Show at Olivette Community Center
April 4-5	St. Charles Antique Mall
October 1-3	St. Louis Stamp Expo

Gary G. Hendren, 12737 Glenage Dr., Maryland Hgts., MO 63043, 576-5261

THE GREATER ST. LOUIS STAMP CLUB

NEXT MEETING: FEBRUARY 22, 1993

PLACE: PARKWAY CENTRAL HIGH SCHOOL

JUNIOR CLUB: 6:30 P.M.

BUSINESS PROGRAM: 8:00 P.M.

JUNIOR CLUB: This month's topic will be "How to use the Scott's Stamp Catalog." Bring any old Scott's Catalog you might have that contains U.S. Bring a stamp or two that we may be able to look up in the catalog.

PROGRAM: The program will be an APS Slide Program.

LIBRARY: If you would like a book from the Club's library contact Vic Silver, 829-0332, or Gary Hendren, 576-5261, prior to the meeting so that he can bring the item to you. .

OFFICERS: Thanks to the following officers for 1993: President - Jerry Waltersheid, Vice President - David Bledsoe, Secretary - Jim Stewart, Treasurer - Gary Hendren, and Librarian - Vic Silver.

BOURSE: All 25 tables have been sold for the upcoming show. If you can sit at the club table for an hour either day or can help set up or tear down please call Gary at the number below or sign up at the meeting.

AUCTION: Bring your items to sell, and get there early enough to view the items for bid.

1993????? DUES: Individual dues remain at \$5.00 and Family memberships are \$6.00. Send to Treasurer Gary Hendren, 12737 Glenage, Maryland Heights, MO 63043. Many have already paid their '93 dues, so if you need a friendly reminder look for a **RED X** at the top of the page.

NUMBERS IN THE NEWS:

1992 paid memberships.....47 individual
5 family

January meeting attendance.....	25
Junior attendance.....	20

BOURSES:

March 6-7,93 SCGSL Show at Olivette Community Center (INSERT)
 March 14, 93 Drury Inn - I-44 & Bowles Ave, 10 - 4:30
 March 20, 93 St. Aloysius Gonzaga, 5628 N Magnolia, 10 - 5
 April 4-5, 93 St. Charles Antique Mall
 October 1-3,93 St. Louis Stamp Expo

Gary G. Hendren, 12737 Glenage Dr., Maryland Hgts., MO 63043, 576-5261

The Greater St. Louis Stamp Club MEETING NOTICE

NEXT MEETING

Monday, March 29, 1993

Parkway Central High School

Junior Club: 6:30 p.m.

Program Topic:

Foreign Stamps

Business Program: 8:00 p.m.

Program Topic:

United Nations Stamps

by Hollister Smith

LIBRARY UPDATE

The new catalog of all our current titles is ready and will be available at this meeting. If there is a special item you would like brought to the meeting, call Gary Hendren at 576-5261 or Vic Silver at 829-0332 to make your requests. We will mail the remaining lists after the March meeting.

DUES DUE

Individual (\$5.00) and Family (\$6.00) Membership dues are payable now and can be sent to Gary Hendren, Treasurer, 12737 Glenage, Maryland Heights, MO 63043.

February Adult Attendance: 19

February Junior Attendance: 16

ELVIS LIVES! DEPARTMENT

Seen in Linn's Stamp Magazine's latest issue



Figure 6. William MacQuarrie of Omaha, Neb., wins this month's cartoon contest with a tongue-in-cheek takeoff on an Elvis song that could double as an auxiliary marking.

MARCH BOURSE WRAPUP

All 25 tables were sold for the March 6 & 7 stamp festival. Over 300 people attended the bourse on a cold but clear weekend. Favorable comments from the dealers and attendees included good lighting and easy accessibility. Thanks to all who helped clean up after the show and those faithful souls who welcomed visitors throughout the event.

BOURSES ON THE HORIZON

April 4-5 - McKinley Antique Mall, St. Charles

April 17 - St. Aloysius Gonzaga School, St. Louis

April 18 - Ramada Inn, Fairview Heights, Illinois

October 1-3 - St. Louis Stamp Expo

AUCTION: Bring items to sell and get there early to view the items up for bid!

ST. CHARLES STAMP SHOW



Presents . . .

SPRING 1993



STAMP FESTIVAL

APRIL 3 & 4, 1993

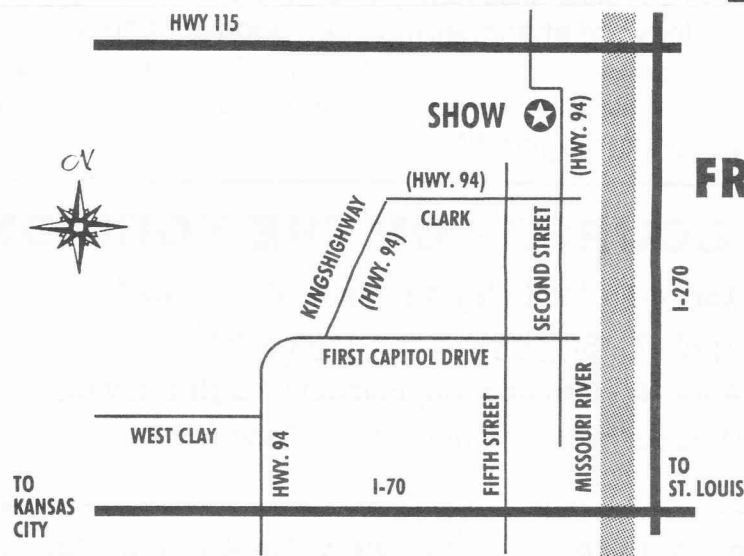
Saturday 10 - 5 Sunday 10 - 4

McKinley School Antique Mall
1701 N. 2nd at Howard, St. Charles, MO 63301



The Philatelic Window at The Show
will be open for your convenience

20 STAMP DEALERS
FREE PARKING
FREE ADMITTANCE
FREE ATTENDANCE PRIZES



The Greater St. Louis Stamp Club

STAMP NEWS

NEXT MEETING

Monday, April 26, 1993

Parkway Central High School

Junior Club: 6:30 p.m.

Program Topic:

How To Set Up An Exhibit

Adult Program: 8:00 p.m.

Program:

*American Philatelic
Society Film*

HAWAIIAN COLLECTION: \$8.25 MILLION

In a April 19, 1993 front page story of *Linn's Stamp News* by Fred W. Baumann, it was revealed that a Senate bill was introduced Jan. 27 by Sen. Daniel K. Inouye of Hawaii that may result in the acquisition by the Smithsonian Institution of the world's finest collection of Hawaiian stamps and covers for \$8,250,000.

The collection comprises 25 volumes of material related to the philatelic history of Hawaii as an island monarchy, provisional government and republic, from the earliest known mailings from Hawaii to the end of its postal system in June 1900.

The rarest Hawaiian stamp is a 2¢ first issue, one of 34 first issues of Hawaii (or "Missionaries") in the Thurston Twigg-Smith collection.

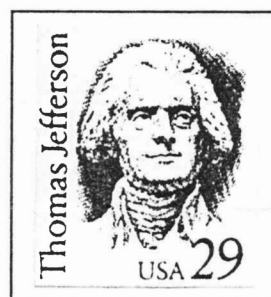
U.S. APRIL ISSUES



Circus commemoratives First day: April 6



Cherokee Strip commemorative First day: April 17



Thomas Jefferson
Great Americans
First day: April 13



Dean Acheson
commemorative
First day: April 21

UPCOMING AREA BOURSES

May 15 - St. Aloysius Gonzaga School, St. Louis

July 25 - Ramada Inn, Fairview Heights, Illinois

Sept 4-5 - McKinley Antique Mall, St. Charles

October 1-3 - St. Louis Stamp Expo '93

AUCTION: Bring items to sell and get there early to view the items up for bid!

SEEN ON STAMPS

Our first puzzle! Harry Lischer, Jr. sent in this word find puzzle for your enjoyment. See how many words found on stamps you can find. Good Luck!

I F J E R A T P I Q H S B C W I S O R S V I S H I L L I N G B A I D O L L A R Z
 A I A U L P H O O A Y E U O T A Y K R E H F A S T P O S T Z E G E L U N E S C O
 W R N C B O G R Y T L T N R T E C S O K V Q D E U T S C H E T T A K S E C L E Z
 C A I N P I I T Q G A U D R U P U N I R I E I I S E T S O P A R A S I K A M N P
 E H M A L D L O I V N T E E A A L E L A J S N P N E E P U R E P U B L I C A T F
 N K L R N Y F E J B O W S I L T S V A M Z E U U N A R I E O E S O E R R O C I E
 T R Y F H E L V E T I A P O A I O O W D Q W S X E I R D R T C P E S O I C X M N
 S A K I Y N A G N A T R O S P A V L G N I D E C I O E C N E P U U T S B H K E N
 E H P K N O I N U L A T S O P L A S R E V I N U D F I L S C H A M B A A I E T I
 R C O I C R T D U N N A T A K A T O M G T U O N N F C E P T R G U N L T N N C G
 G R Z N C K I A D R R X T D L F N K D U B S I O I I H Y A O L Y M P H I L E X V
 S N L A I N N E T N E C I U Q S E S N J D J C T T C O N G R E S S U S Z K T W N
 A T S E W D I U Z B T M P C Z T C E U R O P A S S I N D V A A T S E F I R A C P
 I P I A S T E R Q I N D A R M A B C O M M O N W E A L T H T S C H I L L I N G Z
 P N O I V A R A P H I L A K O R E A P O L S K A V L K P C E N T E N A I R E A M

AERO
 ANNA
 BAMRA
 BELGIE
 BUNDESPOST
 CARIFESTA
 CEDI
 CENTAVOS
 CENTENAIRE
 CENTENNIAL
 CENTIME
 CENTS
 CEPT
 CESKOSLOVENSKO
 CHAMBA
 CHARKHARI
 COCHIN
 COMMONWEALTH
 CONFEDERATE
 CONGRESSUS
 CORREIOS
 CORREOS
 DEUTSCHE
 DINAR
 DOLLAR

EIRE
 ER
 EULA
 EUROPA
 FEDERATED
 FILS
 FRANC
 GB
 GWALIOR
 HELVETIA
 INITIALFLIGHT
 INTERNATIONAL
 JIND
 JUBILEE
 JUGENDMARKE
 KAMERUN
 KENETA
 KINA
 KIRIBATI
 KRONE
 KYAT
 NACIONESUNIDAS
 NAIRA
 OFFICIAL
 OLYMPHILEX

OSTERREICH
 PALAU
 PARA
 PARAS
 PARAVION
 PATIALA
 PENCE
 PESETA
 PESO
 PFENNIG
 PHILAKOREA
 PHOPAL
 PIASGRES
 PIASTER
 PIES
 POLSKA
 PORTO
 POSTAT
 POSTES
 POSTZEGEL
 POUND
 PRINCIPAT
 PROTECTORATE
 PULA
 QINDAR

RAND
 REPUBLICA
 REPUBLIKA
 REVENUE
 RIAL
 RSA
 RUPEE
 SCHILLING
 SESQUICENTENNIAL
 SHILLING
 SHQIPNI
 SHQIPTARE
 STEGOSAURUS
 SUIDWES
 TAKA
 TAKSE
 TANGANYIKA
 UNESCO
 UNIVERSALPOSTALUNION
 UPU
 VATU
 VESTINDIEN
 WARTAX
 ZUIDWEST

The Greater St. Louis Stamp Club STAMP NEWS

NEXT MEETING

Monday, May 24, 1993

Parkway Central High School

Junior Club: 6:30 p.m.

Program:

Exhibit & Judging

Adult Club: 8:00 p.m.

Program:

White Elephant Exchange

Bring something to trade!



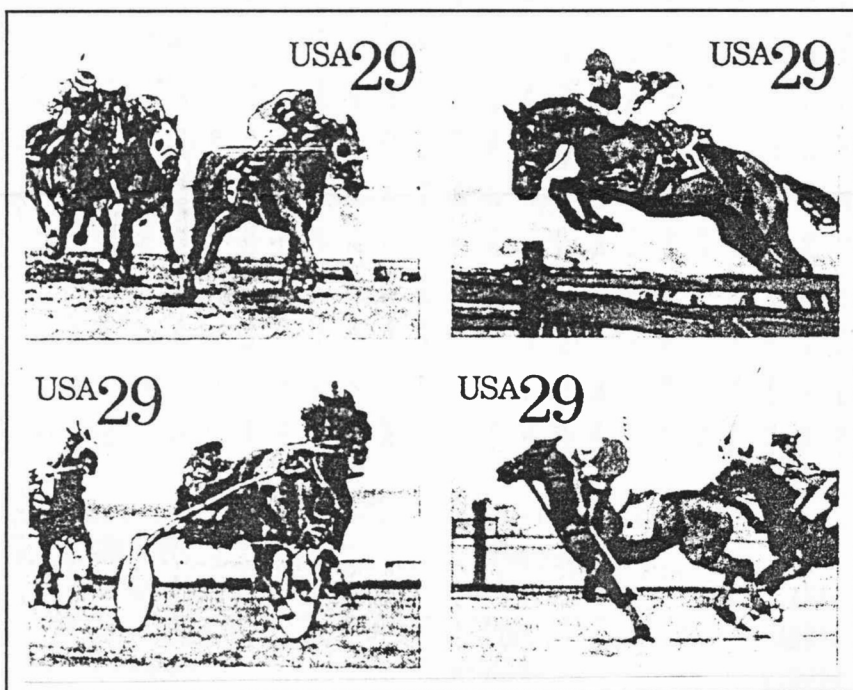
ARE YOU CARRYING THIS CARD?

Members of the Greater St. Louis Stamp Club carry this prestigious symbol. If you have paid your 1993 dues, you should have one. If we've missed you, let Jim Stewart know at the next meeting.

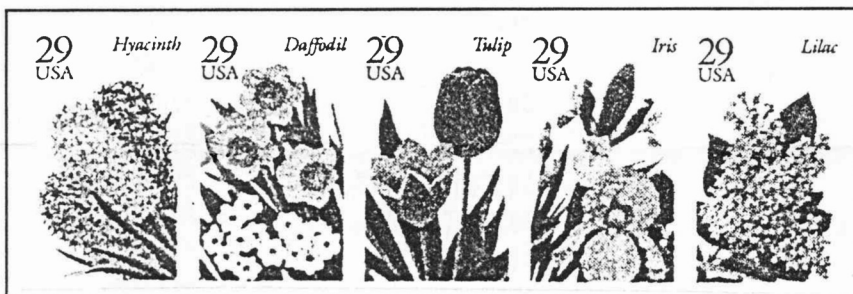
TURN THIS OVER!!!

NEW FEATURE ON BACK!

U.S. MAY ISSUES



Sports Horses commemoratives - First Day: May 1



Garden Flowers commemoratives - First Day: May 15

UPCOMING AREA BOURSES

June 19 - St. Aloysius Gonzaga School, St. Louis

July 25 - Ramada Inn, Fairview Heights, Illinois

Sept 4-5 - McKinley Antique Mall, St. Charles

October 1-3 - St. Louis Stamp Expo '93

AUCTION: Bring items to sell and get there early to view the items up for bid!

SEEN ON STAMPS

Our first puzzle! Harry Lischer, Jr. sent in this word find puzzle for your enjoyment. See how many words found on stamps you can find. Good Luck!

I F J E R A T P I Q H S B C W I S O R S V I S H I L L I N G B A I D O L L A R Z
 A I A U L P H O O A Y E U O T A Y K R E H F A S T P O S T Z E G E L U N E S C O
 W R N C B O G R Y T L T N R T E C S O K V Q D E U T S C H E T T A K S E C L E Z
 C A I N P I I T Q G A U D R U P U N I R I E I I S E T S O P A R A S I K A M N P
 E H M A L D L O I V N T E E A A L E L A J S N P N E E P U R E P U B L I C A T F
 N K L R N Y F E J B O W S I L T S V A M Z E U U N A R I E O E S O E R R O C I E
 T R Y F H E L V E T I A P O A I O O W D Q W S X E I R D R T C P E S O I C X M N
 S A K I Y N A G N A T R O S P A V L G N I D E C I O E C N E P U U T S B H K E N
 E H P K N O I N U L A T S O P L A S R E V I N U D F I L S C H A M B A A I E T I
 R C O I C R T D U N N A T A K A T O M G T U O N N F C E P T R G U N L T N N C G
 G R Z N C K I A D R R X T D L F N K D U B S I O I I H Y A O L Y M P H I L E X V
 S N L A I N N E T N E C I U Q S E S N J D J C T T C O N G R E S S U S Z K T W N
 A T S E W D I U Z B T M P C Z T C E U R O P A S S I N D V A A T S E F I R A C P
 I P I A S T E R Q I N D A R M A B C O M M O N W E A L T H T S C H I L L I N G Z
 P N O I V A R A P H I L A K O R E A P O L S K A V L K P C E N T E N A I R E A M

AERO
 ANNA
 BAMRA
 BELGIE
 BUNDESPOST
 CARIFESTA
 CEDI
 CENTAVOS
 CENTENAIRE
 CENTENNIAL
 CENTIME
 CENTS
 CEPT
 CESKOSLOVENSKO
 CHAMBA
 CHARKHARI
 COCHIN
 COMMONWEALTH
 CONFEDERATE
 CONGRESSUS
 CORREIOS
 CORREOS
 DEUTSCHE
 DINAR
 DOLLAR

EIRE
 ER
 EULA
 EUROPA
 FEDERATED
 FILS
 FRANC
 GB
 GWALIOR
 HELVETIA
 INITIALFLIGHT
 INTERNATIONAL
 JIND
 JUBILEE
 JUGENDMARKE
 KAMERUN
 KENETA
 KINA
 KIRIBATI
 KRONE
 KYAT
 NACIONESUNIDAS
 NAIRA
 OFFICIAL
 OLYMPHILEX

OSTERREICH
 PALAU
 PARA
 PARAS
 PARAVION
 PATIALA
 PENCE
 PESETA
 PESO
 PEENNIG
 PHILAKOREA
 PHOPAL
 PIASGRES
 PIASTER
 PIES
 POLSKA
 PORTO
 POSTAT
 POSTES
 POSTZEGEL
 POUND
 PRINCIPAT
 PROTECTORATE
 PULA
 QINDAR

RAND
 REPUBLICA
 REPUBLIKA
 REVENUE
 RIAL
 RSA
 RUPEE
 SCHILLING
 SESQUICENTENNIAL
 SHILLING
 SHQIPNI
 SHQIPTARE
 STEGOSAURUS
 SUIDWES
 TAKA
 TAKSE
 TANGANYIKA
 UNESCO
 UNIVERSALPOSTALUNION
 UPU
 VATU
 VESTINDIEN
 WARTAX
 ZUIDWEST

The Greater St. Louis Stamp Club

STAMP NEWS

NEXT MEETING

Monday, June 28, 1993

Parkway Central High School

Junior Club: 6:30 p.m.

Program:

AUCTION!

Bring Your Bourse Bucks!

Adult Club: 8:00 p.m.

Program:

"Detecting Forgeries"

APA Program

New Stuff at the Library:

The American Stamp Collector's Dictionary, Minkus Publ., 1949, Konwiser, Harry M.

Medicine Tax Stamps, ATA, 1971, Griffenhagen, George

Missouri Post Offices, APS, St. Louis Branch #4, 1982, Schultz, Robert G.

The Two-Cent Columbian, 1992, Blaikie, W. G.

Types & Varieties of the U.S. 10C Issues of 1855-9, The SPA, 1992, Diamond & Hesly

American Stampless Cover Catalog - Vol. 3, D.G. Phillips, 1993, Various

MULEFEST

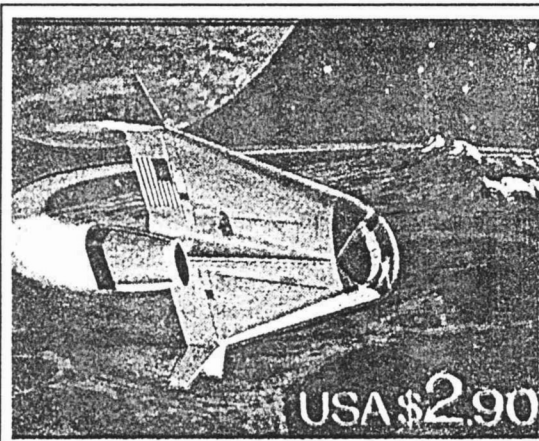
PreCancel Show

June 25-27

West Port Holiday Inn

Everyone is Welcome!

U.S. JUNE ISSUES



Space Vehicle \$2.90 Priority Mail rate

First day: June 3

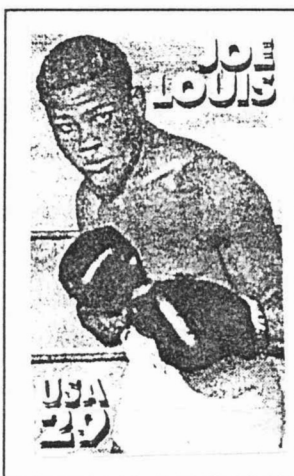


Red Squirrel

29¢ self-adhesive

Sheetlet of 18

First day: June 25



Joe Louis

29¢ commemorative

First day: June 22



Hank Williams sheet stamp

Legends of American Music series

First day: June 9

UPCOMING AREA BOURSES

July 25 - Ramada Inn, Fairview Heights, Illinois

(I-64 and Rt. 159 - Just 12 miles from the Poplar Street Bridge - across the Interstate from St. Clair Square)

Sept. 4-5 - McKinley Antique Mall, St. Charles

October 1-3 - St. Louis Stamp Expo '93

AUCTION: Bring items to sell and get there early to view the items up for bid!

PHILATELIC POTPOURRI

Puzzle Time! Harry Ulscher, Jr. sent in this word find puzzle for your enjoyment. See how many words about stamps you can find. Good Luck!

SEGNIHROHMOJJXDVINVERTEDARTCENTEREDFELSW
 UGDESSOBMEPARCELPOSTALHISTORYONFDDCHALKY
 KYNCTVROULETTEDDZILTWETACILPUDIENOITCUAY
 NBAOBORDERPDENAPLTUIAIPWMILITARYMZSKBWL
 IYCNTNEWSPAPERFORATIONGAUAGEAEPMTOPICALT
 MKEDEGNIHREVENPSELAZDCLTTRLUTMEAPBVLOLTC
 KTRIANGLENZBEHOTLLGBROHEBQMSURRIXSDLUBNT
 EYHTNYNIGRAMIVWMLEGVCLBRYOICAMINTPENUAZ
 BFSIBGYREVILEDLAICEPSLCMUGUTTERPAIRRTMNB
 SOCONJAGXCARDEISFNDPOETAEFIRSTDAYCOVEREG
 PRONRVRMETPESCNTAEACECARCVNBSYREGROFRVTE
 HETKEIMPERFSINECCKTTTSKEHCEBETETEFDFPEB
 WITDLESLINAFLLMSRAEEEIIMAGEEDROTARYPRESSZ
 QGELDEYNLYFQFAGRPRROLOCCUPATIONOITIBIXEE
 HNEICATALOGUELAPSPYFQNNEGRAHCRUSHEETTNCT

AIRMAIL
 ALBUM
 APS
 AUCTION
 BID
 BOOKLET
 BORDER
 BOURSE
 CACHET
 CANCELLATION
 CATALOGUE
 CENTERED
 CHALKY
 COIL
 COLLECTION
 COLOR
 COMMERATIVE
 CONDITION
 COUNTERFEIT
 DECIMAL
 DENOMINATION
 DUPLICATE
 EMBOSSED
 ENGRAVED
 ERROR
 ESSAY
 EXHIBITION
 FADED
 FAULT

FIRSTDAYCOVER
 FOREIGN
 FORGERY
 GRILLE
 GUM
 GUTTERPAIR
 HINGES
 IMAGE
 IMPERF.
 INVERTED
 KILLER
 LINNS
 MAGNIFY
 MARGIN
 MILITARY
 MINKUS
 MINT
 NEVERHINGED
 NEWSPAPER
 OCCUPATION
 OFFICIAL
 OFFSET
 OVERPRINT
 PANE
 PARCELPOST
 PERFORATIONGAUGE
 PHILATELY
 PLATEBLOCK
 POSTAGEDUE
 POSTALHISTORY

POSTMASTER
 PRECANCEL
 PROOF
 REGISTERED
 REPRINT
 ROTARY
 ROTARYPRESS
 ROULETTE
 SCOTT
 SEMIPOSTAL
 SET
 SETENANT
 SHEET
 SPACEFILLER
 SPECIALDELIVERY
 SPECIMEN
 STANLEYGIBBONS
 STOCK
 SURCHARGE
 TAGGED
 TEAR
 TETEBECHE
 THIN
 TONGS
 TOPICAL
 TRADE
 TRIANGLE
 US
 WATERMARK