

1996-01-perf-dispatch	2
1996-02-perf-dispatch	4
1996-03-perf-dispatch	6
1996-04-perf-dispatch	10
1996-05-perf-dispatch	12
1996-06-07-perf-dispatch	14
1996-08-perf-dispatch	16
1996-09-perf-dispatch	18
1996-10-perf-dispatch	22
1996-11-perf-dispatch	24

# THE PERF-DISPATCH

Official Newsletter of the Greater St Louis Stamp Club

January Issue

## Meeting: Monday, Jan. 22, 1996

The monthly meeting will be Monday evening at Parkway Central High School, as usual...

Juniors Meeting will be at 6:30 PM

## Adults Meeting

Will be at 8:00 PM. Our program will be "Machine Cancels", given by Bob Schultz, longtime postal history expert and author of *Missouri Post Offices 1804-1981* (a compilation of all post offices and their years of operation in Missouri) Following the show, we'll have our standard auction of member material.

☑ January means time for this year's dues. Remember, paying before March means Auction Bucks.

## Upcoming Bourses:

☁☔

January 14 St.Louis, MO: Stratford Inn at I44 & Bowles Ave.exit, South Outer Road 10 AM to 4:30 PM. (The monthly bourse)



January 28 Fairview Hghts, IL: Ramada Inn 6900 N.Illinois, Rt.164 & Rt.159 South Outer Road 10 AM to 4:30 PM. Belleville/Scott Stamp Club



March 29-31 St.Louis, MO Frontenac Hilton, Lindbergh at Hwy 40. The ST.LOUIS STAMP EXPO Friday, Sat., and Sun

## Philatelic Terms for Beginners

Deltiologist: someone who collects picture postcards for the wrong side.

## EVENTS FOR 1996

**February 26** Speaker Elizabeth Nettles will discuss **HAWAIIAN ISSUES** and the Hawaiian Auction. The new *GSLSC Official Handbook* will debut!! Ok, its just a binder, but it's perfect to hold some new handy helpful handouts: membership directory, library catalog, club history, etc.

**March 30** We will hold our meeting at 10:30 AM Saturday at the ST.LOUIS STAMP EXPO, with special speaker Dick Hall on the Confederacy in Missouri. This means there will be no March 25 evening meeting.

As many of you already know, the Confederate Stamp Alliance is holding its national meeting/convention here during the EXPO, so our meeting is arranged to fit right in.

**April 22** Nice Club Auction (and stamp licking).

**May 27** President D. Bueker shows his *fancy Cancels*. Due to Memorial Day, this meeting date or location may be altered.

**June 1-2** Our very own GSLSC STAMPFEST at Olivette Community Center.

**June 24** Treasurer G. Hendren shows some of his 2 zillion **PRE-CANCELS** and tries to explain what possessed him?

**July (date unknown)** The annual BBQ Party

**August 26** Editor T. Minor shows some of his **CINDERELLA STAMP ART** but can't possibly explain what possessed him.

**Also coming:** possible field trips and special meetings, (to be announced as confirmed); the Big Bux Auction in November; our annual XMAS party, and: a GSLSC STAMPFEST at a new and bigger location this fall!

## APS Convention 1956

Prior to August 1995, there had been no national APS STAmPsHOW in St. Louis since 1956. Our club library has a copy of the program for that 1956 convention, which was the first in St. Louis since 1927. Hosting was the Mound City Stamp Club, with about 120 members. A 400 frame exhibit and 32 dealer bourse was held in the Hotel Jefferson from Wednesday to Sunday, open to 10:00 PM!

There are several one page articles concerning philately connected with St. Louis, and several reprint stamps individually pasted in the booklet. James W. Adler was Publicity chairman of the convention.

## THE PERF-DISPATCH, VOL 2 No.1

Published by the GSLSC

Club Officers:

President . . . . . (822-2123) Dave Bueker  
 Treasurer . . . . . (576-5261) Gary Hendren  
 Secretary & Editor . . . . . (645-4451) Tom Minor  
 Program V.P. . . . . David Bledsoe  
 Banker. . . . . Hollis Sisk

Contents copyright 1996 Tom Minor/ GREATER ST. LOUIS  
 STAMP CLUB

### Mississippi River Bridge, St. Louis



Known to stamp collectors as the two dollar Trans-Mississippi Commemorative Issue, the simple title, "Mississippi River Bridge", engraved on the stamp does not adequately identify the world famous Eads Bridge of St. Louis — engineering marvel of the midwest.

Formally opened by President Ulysses S. Grant on July 4, 1874, Eads Bridge stands as a lasting monument to the perseverance and genius of Captain James Buchanan Eads. Built in seven years at a cost of eight million dollars, and thirteen lives, the three 500 foot arched spans of the bridge rest on granite piers caissoned 103 feet below water. Original materials built into the bridge included 4,780,000 lbs. of steel, 6,313,500 lbs. of wrought iron, and 1,612,000 lbs. of wood and 102,897 cu. yds. of masonry. The upper deck of the bridge, 54 feet wide, accommodates foot and vehicular traffic while the lower deck, fifty feet over the Mississippi River, accommodates two railroad tracks.

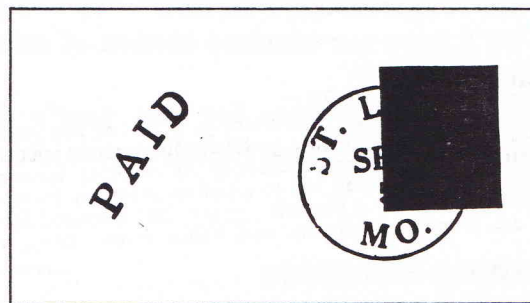
James Buchanan Eads was born in 1820, and completed his formal schooling at the age of twelve. Working as a steamboat clerk, Eads developed an early interest in the Mississippi River and invented a diving bell for salvage work. In 1861 his advice was sought by President Lincoln and Eads-built iron-clads manned by the United States Navy opened the Mississippi River from St. Louis to New Orleans and split the Confederacy. Eads died at the age of sixty-seven in 1887 while working on the design of a ship railway across Panama to transport vessels between the Atlantic and Pacific Oceans.

Stamp collectors of the future can look for another famous American Commemorative Stamp — Captain James B. Eads of St. Louis, inventor and engineer.

— JAMES W. ADLER

### SAINT LOUIS BEARS

Classics of Philately



Between the time of the Act of 1845, effecting uniform postage rates, and the Act of Congress of March 3, 1847, authorizing the Postmaster-General to issue postage stamps, postmasters in various cities issued provisional stamps. Such postmaster stamps represent the earliest official attempts to meet the requirements of the public and showed the way to proper Government adhesive stamps to expedite the mails.

Postmaster of St. Louis at this time was John M. Wimer who was prompt to recognize the convenience and necessity for postage stamps as compared to the laborious method of handmarking each letter with the correct letter rate. Accordingly, Wimer had prepared and issued for sale at the St. Louis Post Office in November, 1845, 5¢ and 10¢ postage stamps featuring the Bear seal of the State of Missouri and the wording, "Saint Louis Post Office."

The early printing was from a copper plate of six subjects comprising three 5 cent and three 10 cent stamps in two vertical rows. The engraver was J. M. Kershaw. A need for 20 cent stamps became apparent and two of the 5 cent figures were hammered out of the plate and the new numerals "20" were engraved. Printings and varieties of 1845, 1846, and 1847 exist and the St. Louis Bears, though not issued by the United States Government, have become classics of philately and much sought after by collectors.

The "Bear" stamp above with the reproduction of the 1846 St. Louis postmark and "PAID" marking is a facsimile produced from one of the early forgeries of the Bear stamps. Best available records indicate the following numbers of original Bear stamps exist in collections today: 5 cent — 175 copies, 10 cent — 230 copies, and 20 cent — 40 copies.

— ROBERT W. MURCH



# THE PERF-DISPATCH

Official Newsletter of the Greater St Louis Stamp Club

February 96

## Meeting: Monday, Feb. 26, 1996

The monthly meeting will be Monday evening at Parkway Central High School, as usual...

### Juniors Meeting will be at 6:30 PM

We will have a slide show on the basics. Bring your albums and check through some new stamps.

## Adults Meeting

**February 26** Our speaker will be Dr. Elizabeth Nettles, who will discuss the **HONOLULU ADVERTISER HAWAII AUCTION** of this fall. Dr. Nettles is a long time Hawaii collector, program chair at Webster Groves St. Club, and one of St. Louis' foremost philatelists.

As mentioned last month, we will begin handing out portions of the new *GSLSC Official Handbook*.

☐ Remember, paying dues before March means Auction Bucks.

## March Meeting

We will hold our meeting at 10:00 AM Saturday, March 30 at the ST. LOUIS STAMP EXPO, with special speaker Dick Hall on the Confederacy in Missouri. This means there will be no March 25 evening meeting.

We'll have more details on the expo in next month's newsletter. As usual, volunteers are desperately needed for various duties. Call Gary Hendren or Dave Bueker if you can work, especially on Friday.

## Upcoming Bourses:



March 10 St. Louis, MO: Stratford Inn at I44 & Bowles Ave. exit, South Outer Road 10 AM to 4:30 PM. (The monthly bourse)



March 29-31 St. Louis, MO Frontenac Hilton, Lindbergh at Hwy 40. The ST. LOUIS STAMP EXPO Friday, Saturday, and Sunday

## Philatelic Terms for Beginners

Postage Dues: Refers to payment of membership fees by mail?

## February Quiz

Those pesky Pex: where do they all come from?

1. BALPEX \_\_\_\_ 2. INDYPEX \_\_\_\_ 3. MILCOPEX \_\_\_\_
4. AIRPEX \_\_\_\_ 5. VAPEX \_\_\_\_ 6. NAPEX \_\_\_\_
7. SESCAL \_\_\_\_ 8. TOPEX \_\_\_\_ 9. PIPEX \_\_\_\_

a. Salem, OR b. it changes annually c. Los Angeles, CA d. Maclean, VA e. Virginia Beach, VA f. Dayton, OH g. Milwaukee, WI h. Indianapolis, IN i. Baltimore, MD

## Show and Tell

We are continuing to look for members to bring collection items for the new display board.

## It's dues paying time

No man's credit is as good as his money.— Ed Howe

Please check your mailing address sticker. If there is a blue highlight, you owe this year's dues: \$5.00. Feel free to mail it if you can't make it to the meeting: Send a check to:

Gary Hendren, Treasurer. 12737 Glenage Maryland Hgts MO 63043-2811

## About Printing 3: Typographic

Relief, or typographic, printing is what we normally think of when someone says "printing": using type with raised faces, the ink is rolled on the raised portion and transferred to paper.

The Scott catalog calls this "Typo." or "Typeset", although the term typography is more correctly used to mean the art of arranging and designing with typefaces, not the actual printing.

Relief printing can be done by so many different methods, it would take a book just to list them all.

**Wood block print:** The earliest form of printing, long before Gutenberg, was printing from a carved design in a block of wood (Albrecht Durer is famous for his block prints). This has rarely been used for stamps, but some Postmaster provisionals (US and CSA) made their own temporary stamps using woodblocks.

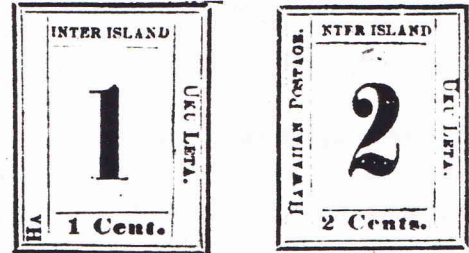
**Block prints and Handstamping:** Stamps have also been printed using hand carved blocks of material other than wood: rubber, soft metals such as brass, stone, or even ivory. Just as with other printing methods, the problem arises as to what to do to get multiples. It's much more efficient to print more than one stamp at a time, but that means someone must carve the same design repeatedly on a plate, and there are bound to be errors, or at least a lot of variation that way. Even so, in some primitive conditions, it has been done.

A number of methods have been used to multiply a design to get a printing base, but most can be called either mechanical or photographic. No matter how a first die is made (carved, typeset, etc.), it can probably be used to cast multiple copies using wax, plaster, etc. Or, engraved steel dies can be used to stamp or transfer roll multiple copies in a softer metal plate, pretty much the same as done for engraving. Photographic transferring usually means using an acid wash to etch a metal plate, which has been treated with the design photographically.

**Typesetting:** Many times, printers' movable type was used to make stamps. Usually, letters, blank

spacers, and printers' ornaments were combined to make a stamp design that is more than a simple number. If a printer had enough type pieces, he could set up repeats of a design, all clamped together on one base, ending up with a "plate" which printed a sheet of stamps at a time.

This is how the earliest stamps of Hawaii were printed (Scott 1 to 4 and Scott 12 to 26) from 1851 to 1865.



**Typesetting:** A number of techniques and machines were developed to speed up and improve typesetting. Most of them arranged type which was recessed, not raised, and then used that as a mould to cast the actual type using a soft metal.

The most common use for relief printing on US stamps was precancels. All of the overprinting was done with rubber or metal cylinders with raised lettering and lines.

Relief printed stamps have characteristics in their looks that are generally easy to spot. The colored areas are pressed down rather than raised as in engraving. Fine, dark lines are difficult to do. Gray or shaded areas are a series of lines or halftone dots, cruder looking than the same thing printed by engraving or high quality offset. Like lithography, relief printing can print a bold solid area easily.

And typographic printing is (or used to be) the cheapest and most common printing method. That made it less desirable due to counterfeits, but more desirable due to its low cost.

## THE PERF-DISPATCH, VOL 2 NO.2

Published by the GSLSC

### Club Officers:

President . . . . . (822-2123) Dave Bueker  
 Treasurer . . . . . (576-5261) Gary Hendren  
 Secretary & Editor . . . . . (645-4451) Tom Minor  
 Program V.P. . . . . David Bledsoe  
 Banker. . . . . Hollis Sisk

Contents copyright 1996 Tom Minor/ GREATER ST. LOUIS

STAMP CLUB





## In Memoriam

Carolyn Carolli, member #269, passed away on March 13. Although she rarely attended meetings, Carolyn was well known to all in the club as a willing and tireless volunteer at club activities. She will be missed. Flowers were sent by the club.

## A Summary Of Confederate Issues

The Scott Catalog lists 14 basic stamp issues by the Confederate States of America (with a number of color/printing varieties).

It took some time for the CSA to organize, and for cooperation between the USPOD and southern postmasters to end, and for capable printers to be hired in the South to produce stamps. In the meantime local postmasters made their own "provisionals" or custom handstamps. Several pages would be needed just to list those. The true national stamps start in late 1861:

### 1. 5¢ green Jefferson Davis

Lithographed on stone by the Richmond firm of Hoyer & Ludwig in Richmond. There were no printers in all the south capable of Intaglio printing at the start of the war.

Issued October 1861 for the rate of half ounce letter going less than 500 miles.

### 2. 10¢ green Thomas Jefferson

Lithographed same as the 5¢. Thomas Jefferson is pictured, who, although a Virginia slaveholder, was probably rolling over in his grave when this stamp was issued in Nov. 1861.

### 3. 2¢ green Andrew Jackson

Lithographed by H&L. Andrew Jackson pictured, who, although a native of Tennessee, was most definitely rolling over in his grave when this stamp was issued in spring, 1862.

Old Hickory, although very popular in the south, had sent troops to South Carolina to enforce unpopular tariff laws that had been ignored under the theory of "Nullification."

The 2¢ stamp paid the drop rate, which meant it was rarely used, because only the largest cities had any kind of organized local delivery.

### 4. 5¢ blue Jefferson Davis repeat

This is no. 1 in a new color. Having both 2¢ and 5¢ in green had confused hurried postal workers, so the 5¢ denomination was changed in spring of 1862.

### 5. 10¢ rose Thomas Jefferson repeat

The Scott no.2, originally blue, was then changed to pink to avoid confusion with the new 5¢ color.

### 6. 5¢ light blue J Davis London print

### 7. 5¢ light blue J Davis local print

The British printers, Thomas de la Rue & Co., were hired to make plates and provide a starter supply of stamps. These were *typographic* plates.

No.7 is the locally printed version using the imported plates, which are much cruder looking due to the hardships of war.

It took awhile for the stamps to get through the blockade, and not all got through. About that time the rate for mail was increased to ten cents regardless of distance.

### 14. 1¢ orange John C. Calhoun

This stamp was printed by de la Rue (at the time of Scott 6), but it took so long to get through the blockade, that the 1¢ local use had long since been changed. De la Rue Co. should have been embarrassed to sell such a badly done portrait



1



2



3



6



7

engraving.

Like no. 6&7, this stamp was typographed. All copies are London printed.

#### 10. 10¢ blue J Davis frame lines

By 1863 a print shop capable of engraved stamps had been set up (Archer & Daly, of Richmond), by skilled former employees of northern Bank Note Companies. The first 10¢ issues were somewhat hurried and still show guide lines which were normally burnished out before printing.

#### 8. 2¢ brown red Andrew Jackson

No.8 is also a new engraved design with some resemblance to the "US BlackJack" design Issued circa April, 1863.

#### 9. 10¢ blue J Davis T-E-N

A new improved version of no. 10, with a different profile portrait, much cleaned up frame, and 10¢ spelled out. According to legend, the plate was not used for long because the portrait was said to make Jeff Davis look similar to Abe Lincoln.

#### 11. 10¢ blue J Davis Type I

#### 12. 10¢ blue J Davis Type II

No.11 is no. 10, the engraving transferred more carefully to two new steel plates. No. 12 is a totally new engraving of 10, with slight changes to the frame and an overall improvement in quality.( and also used to make two steel plates).

Due to the press of time and manpower, both were used in approximately equal amounts.

#### 13. 20¢ green George Washington

There was no specific need for a 20¢ stamp, except for double weight letters. 20¢ stamps saw some use as small change, as happened in the Union side. And there are a few covers surviving showing bisected versions (to get two 10¢ stamps) in case of shortages. This stamp was a steel engraved printing

by the Archer & Daly Co., same as 9-12.

#### Other firms

A second lithographic printer was hired to produce quantities of no. 1 & 2: J.T. Paterson & Co. of Columbia, S.C. Hoyer & Ludwig made transfer prints to new stones for Paterson to use, but there are several detail differences, & some look to be possibly "secret marks" made by H&L Co. However, Scott does not number them separately, for some reason.

By mid 1864, Richmond was so threatened by Grant's Army that the duty of printing from the engraved plates was given to Keatinge & Ball, of Columbia, S.C. These were the same plates Archer had produced, with the marginal name changed. So Scott 11 & 12 were the final stamps of the CSA.



6

J.T.P. CO.

### THE PERF-DISPATCH, VOL. 2 NO.3

Published by the GSLSC

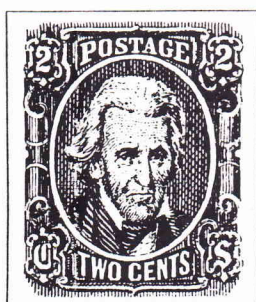
#### Club Officers:

President . . . . .	(822-2123) Dave Bucker
Treasurer . . . . .	(576-5261) Gary Hendren
Secretary & Editor . . . . .	(645-4451) Tom Minor
Program V.P. . . . .	David Bledsoe
Banker. . . . .	Hollis Sisk

Contents copyright 1996 Tom Minor/ G ST. LOUIS S C



14



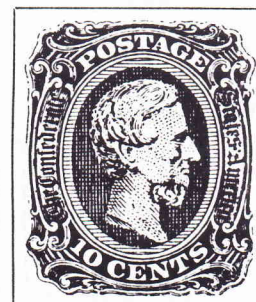
8



9



TYPE I



TYPE II



An Invitation to Join the:

# Greater St.Louis Stamp Club

## Founded 1976 APS Affiliate

Open to anyone in the greater St.Louis area.

## Meetings Monthly

Meetings are usually held on the Fourth Monday of Each Month, with a Juniors' club beginning at 6:30 and Adults' club at 8:00. Each meeting includes a program by a member or visiting speaker, and a Door Prize Drawing and 50/50 \$ Raffle.

## Annual Special Events:

**GSLSC StampFest** with 25 Dealer Bourse and Exhibits!!!!

Christmas Party in December, Summer BBQ Party in July

Auction Bucks Sale in November

## Extensive Library Available to Members

Over 300 philatelic books and catalogs are available to check-out.

## Meeting Each Month Includes Auction of Member Material

Occasional collections bought by the club are sold to members at bargain prices!

## What will you accomplish by joining the GSLSC?

1. Learn something new every month
2. Improve your collection
3. Make friends with some fellow collectors
4. Don't forget the fabulous newsletter!!
5. Have fun

## MEMBERSHIP APPLICATION:

Name \_\_\_\_\_

Phone \_\_\_\_\_ Mailing Address: street \_\_\_\_\_

city \_\_\_\_\_

state \_\_\_\_\_ zip \_\_\_\_\_

Collecting Interests: \_\_\_\_\_

**\$5.00 Individual Membership \$6.00 Family Membership**

Enclose check made out to the Greater St.Louis Stamp Club and

## SEND TO:

Gary G. Hendren, Treasurer  
12737 Gloenage Dr.  
Maryland Hts., MO 63043



13

**Or, Call Dave Bueker (849-6549) or Gary Hendren (576-5261) for Information**

# THE PERF-DISPATCH

Official Newsletter of the Greater St Louis Stamp Club

April 96

## Meeting: Monday, April 22, 1996

The monthly meeting will be Monday evening at Parkway Central High School. Please notice: fourth Monday comes early in the month.

### Adults Meeting

Will be at 8:00 PM. Our big excitement this month is a **Club Material Auction**, as a reward to all those who help put stamps on postcards for our bourse mailing. Auction lots are included with your newsletter. Check it out.

### Juniors Meeting will be at 6:30 PM

Juniors will get materials & go over how to prepare for the annual Exhibition in May. There will also be a 'Stamp Hunt'.

## Upcoming Bourses:



April 27-28 St. Charles, MO: Star Stamps Festival McKinley School Mall, 1701 N 2nd see flyer Sat. 10-5, Sun. 10-4



June 1-2 St. Louis, MO: Olivette Community Center GSLSC Spring StampFest Saturday and Sunday.



June 9 St. Louis, MO: Stratford Inn at I44 & Bowles Ave. exit, South Outer Road 10 to 4:30 PM.



June 13-14-15 St. Louis, MO: Budgetel Inn St. Charles, MO: Annual Missouri Precancel "Mulefest" call Gary Hendren for info.

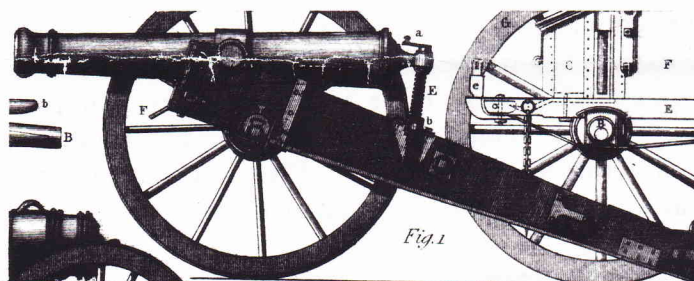
## St. Louis Expo '96

Now that the St. Louis Expo '96 is over and the dust has settled, thanks to all who attended at least one session and several that attended two or all three days. Happy dealers were disbursing their wares during the three day show. I hope you added many new items to your collection.

We are pleased to have so many of our club members taking an active part in making the show a success. David and Penney Kols worked awfully hard to coordinate all aspects of the show. David Bueker served as chair of the Youth Activities. Tom Minor was responsible for designing the terrific Show Cachet and Cancel. Alan Barasch served on the Exhibit Committee and Gary Hendren and David Bledsoe were responsible for getting the dealers in and out of the bourse room without a hitch. George Wren had a wonderful exhibit in the competition. We also had many of our members helping out in the youth room, helping with the exhibits, or working the registration desk. Your officers are pleased that so many of you are taking part in the club's activities.

Thanks.

Gary Hendren



### Philatelic Terms for Beginners

Luminescence: Glowing without heat.

For stamps, this refers to how the stamp looks under ultraviolet light, which makes some inks and papers glow.

## Countries Sending and Receiving the Most Mail

Pieces of mail per year, circa 1992

1. USA 164,639,561,000  
This is about 638 pieces per capita
2. Japan 22,723,628,000  
This is 182 pieces per capita
3. Russia 21,923,325,000  
This is 147 pieces per capita
4. France 21,867,860,000  
This is 384 pieces per capita
5. Germany 17,051,746,000
6. UK 16,412,000,000
7. India 14,626,630,000  
This is 16 pieces per capita
8. Ukraine 13,466,000,000
9. Canada 9,004,547,000  
This is 330 pieces per capita
10. Italy 8,995,333,000

Obviously, this list should favor the biggest countries (in population count), however; China is by far the most populated, with 1.175 billion people, and doesn't make the mail list. Indonesia, Brazil, and Bangladesh are also big countries with not much mail.

### Future meeting: 2nd Monday in May

We are planning an extra meeting in May, to be a workshop helping people get started arranging their own exhibit display, to be held at Regency Stamps shop at 7:30. This will be for Webster and Mound City Club members also. Please check your calendar: we'll discuss it Monday night.

### In Memoriam

Adrienne L. McCrady, wife of Owen McCrady, (member #266) passed away on April 6. Services were held April 9. Adrienne occasionally attended club parties with Owen, and was thus known by most of us. Flowers were sent by the club.

## Countries Sending and Receiving the Most Mail 100 Years Ago

Pieces of mail per year, circa 1892

1. USA 7,030,000,000  
This was 112 pieces of mail per capita
2. Germany 2,490,000,000  
This was 50 pieces per capita
3. UK 2,360,000,000  
This was 62 pieces per capita
4. France 1,520,000,000  
This was 40 pieces per capita
5. Austria/Hungary 960,000,000  
This was 23 pieces per capita
6. Italy 476,000,000
7. Russia 326,000,000  
This was 3 pieces per capita
8. Australia 294,000,000  
This was 80 pieces per capita
9. Belgium 290,000,000
10. India 274,000,000  
This was 1 piece per capita

It seems Americans have always loved mail. Countries with empires also do best on this list, which makes sense, as colonists would have had many business and family ties back home. And why so high for Australia? Were they all letters back to England?

## THE PERF-DISPATCH, VOL 2 no1

Published by the GSLSC

Club Officers:

- President . . . . . (822-2123) Dave Bucker  
 Treasurer . . . . . (576-5261) Gary Hendren  
 Secretary & Editor . . . . . (645-4451) Tom Minor  
 Program V.P. . . . . David Bledsoe  
 Banker. . . . . Hollis Sisk

Contents copyright 1996 Tom Minor/ GREATER ST. LOUIS  
 STAMP CLUB



# THE PERF-DISPATCH

Official Newsletter of the Greater St Louis Stamp Club

May96

## Meeting: Tuesday, May 28, 1996

Due to Memorial Day, the monthly meeting will be on **TUESDAY**, not Monday evening at Parkway Central High School.

### Adults Meeting

Will be at 8:00 PM. Club Treasurer "Bourse-Guru" Hendren will tell us all about St. Louis County Precancels A to Z. Our Auction will be member material.

It's time to start making plans for the upcoming July BBQ. We'll be asking for an attendance count next month.

### Juniors Meeting will be at 6:30 PM

Juniors' Annual Exhibition. Don't forget, all you volunteer adult judges. Youth auction coming in June.

## Upcoming Bourses:



June 1-2 St. Louis, MO: Olivette Community Center **GSLSC Spring StampFest** 10-5 Saturday and 10-4 Sunday.



June 9 St. Louis, MO: Stratford Inn at I44 & Bowles Ave. exit, South Outer Road 10 to 4:30 PM.



June 13-14-15 St. Louis, MO: Budgetel Inn St. Charles, MO: Annual Missouri Precancel "Mulefest" call Gary Hendren for info



June 16 Fairview Hts., IL: Ramada Inn at I-64, Sunday 10 AM to 4:30 PM.

## GSLSC StampFest: One Week Away!

The annual GSLSC Stamp Festival will be held on June 1&2 at the Olivette Community Center. Setup will start at 5:00 PM on Friday; cleanup at 4:00 on Sunday. We need your support and it's worth auction bucks to you!!

Club Exhibitionists will meet at 8:30 AM Saturday morning to setup the frames.

### Exhibiting meeting

A dozen people interested in exhibiting met May 13 at Regency Store. Gary H., Tom M., Alan B., Norm P. ( & David Kols) attended from GSLSC. More meetings will be held, usually on the second Monday of the month, open to everyone. Check with a club officer if interested.

### Philatelic Terms for Beginners

Roccia: how they spell "Russia" in Russia.

## May Quiz:

These are the first ten governments to issue Postage Stamps. Match the correct country to the date.

- |                                  |           |
|----------------------------------|-----------|
| 1. Mauritius                     | May 1840  |
| 2. US: New York City provisional | Feb. 1842 |
| 3. Zurich, Switzerland           | Mar. 1843 |
| 4. Brazil                        | Aug. 1843 |
| 5. Geneva, Switzerland           | Oct. 1843 |
| 6. Basle, Switzerland            | July 1845 |
| 7. USA                           | July 1847 |
| 8. UK                            | Sep. 1847 |
| 9. France                        | Jan. 1849 |
| 10. Belgium                      | July 1849 |

Answer on the back page.

## April Meeting: Auction Results, etc.

Many thanks to all who took part in the GSLSC Auction last month. Here is the resulting "hammer" prices summary.

Lot #	price	Lot #	price
1	\$37.00	28.	\$2.10
2.	\$32.50	29	\$6.00
3.	\$10.00	30.	\$22.00
4.	\$1.50	31.	\$2.40
5.	\$9.00	32.	\$2.25
6.	\$1.00	33.	\$26.00
7.	\$3.50	34.	\$3.50
8.	\$22.00	35.	\$1.30
9.	\$8.00	36.	\$1.80
10.	\$15.00	37.	\$1.70
11.	\$25.00	38.	\$.80
11B.	\$2.30	39.	\$2.50
12.	\$95.00	40.	\$17.00
13.	\$40.00	41.	\$.75
14.	\$17.00	42.	\$2.60
15.	\$1.70	43.	\$7.10
16.	\$21.00	44.	\$7.10
17.	\$1.50	45.	\$24.00
18.	\$7.00	46.	\$14.00
19.	\$15.00	47.	\$13.50
20.	\$8.50	48.	\$7.50
21.	\$10.00	49.	\$1.75
22.	\$.75	50.	\$12.00
23.	\$22.00	51.	\$2.00
24.	\$1.00	52.	\$33.00
25.	\$1.00	53.	\$20.00
26.	\$38.00	54.	\$22.00
27.	\$1.00	55.	\$22.00

The first part of April's meeting was spent preparing the post card mailing for the StampFest.

Big auction spender was Bob O. Vic S and Hollis S fought to a draw ; neither was hurt, and no one succumbed to the temptation to box Jerry W's ears. New member Jim T won the 50/50, whereas your editor has never won the cash yet. Life is unfair.

## Announcement !!

Congratulations to member #268, Ruthanne S Straight and Thomas R Piotrowski, married on April 12, 1996.

## Quiz answer

All the list is in correct order, except for UK (first in May 1840), and Mauritius (8th in 1847).

So what the is a Mauritius?

Mauritius is an island off the cost of Africa. It's not the big island near Southeast Africa (that's Madagascar), it's a fairly small island (around 30 miles across, 720 sq. mi.) located five hundred miles east of Madagascar.

The British got it as a colony after Napoleon's defeat. Now it's an independent country with a big population (1,000,000+).

Scott 1&2 of Mauritius are famous rarities- find them in the Philatelic Gems series of books in our GSLSC Library.

## THE PERF-DISPATCH, VOL 2 no.5

Published by the GSLSC

Club Officers:

President . . . . . (822-2123) Dave Bueker  
 Treasurer . . . . . (576-5261) Gary Hendren  
 Secretary & Editor . . . . . (645-4451) Tom Minor  
 Program V.P. . . . . David Bledsoe  
 Banker. . . . . Hollis Sisk

Contents copyright 1996 Tom Minor/ GREATER ST. LOUIS  
 STAMP CLUB

# THE PERF-DISPATCH

Official Newsletter of the Greater St Louis Stamp Club

June-July 96

## Meeting: Tuesday, June 24, 1996

The next monthly meeting will be Monday evening at Parkway Central High School, as usual.....

### Adults Meeting

Will be at 8:00 PM. The program will be by our very own Dave Bueker on his U.S. fancy cancel collection. Our Auction will be member material. Bargain basement: We will also have a box of covers on sale for 25¢ each, five for \$1!!

We'll also be asking for an attendance count about the July party. Check your calendar now.

### Juniors Meeting will be at 6:30 PM


It's auction time. Don't forget to bring your accumulated Auction Bucks. You should have already received your auction list in a separate mailing. Come at 6:15 (like last year) to view things.

### June non Quiz:

The postage stamp used to mail this month's newsletter is the first true US commemorative stamp that is also self-adhesive. The first day of issue was May 31st; an article appeared in Linn's Stamp News in the May 27 issue. This stamp is not available in most post offices as a self adhesive, and was purchased at the log cabin downtown. A few singles will be available for sale at the meeting.

The building pictured is the Tennessee State Capitol, built in the 1850's. The architect, William Strickland, came west from Philadelphia. Strickland was in his 60's, and a large stone building went up slowly. When he died in 1857, still at work, Strickland's architect son buried him in the walls. That's what I call getting into your work.

## BBQ Party: July 21, 1996

 You and your family are hereby invited to the annual Club BBQ on Sunday, 2:00 PM, July 21 at the home of President Dave Beuker, 8901 Westhaven Court. This will be our meeting for the month of July.

The club will supply food and drinks, however, members may bring appetizer or dessert. Children are welcome. In case of extreme heat or snow, we will retreat inside (to the Beuker-Basement-Bunker).

**Pleeease RSVP Mr. or Mrs. Beuker** during the month of June. Leave a message at their office, 822-2123.

### Directions for Party Goers

It's a different house from last year. Give Mr. President a call and he'll mail you a map of the neighborhood. What I do is exit 44 at Lindbergh/Kirkwood, go south to East Watson, go (left) 12 blocks east to GlenRose, turn (right) and follow GlenRose south as it curves right twice, into Fox Park and then Westhaven.

### Upcoming Bourses:



September 21&22 St. Louis, MO: Crestwood Community Center **GSLSC 20th Anniversary StampFest** 10-5 Saturday and 10-4 Sunday.



July 14 St.Louis, MO: Stratford Inn at I44 & Bowles Ave.exit, South Outer Road 10 to 4:30 PM.



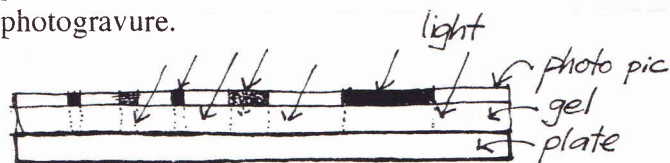


## About Printing.....Photogravure

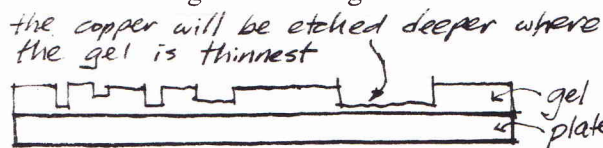
Photogravure is the modern method of engraving.

In intaglio, the recesses of the plate that hold the ink are made by hand, or transferred from a master made by hand. In photogravure, the engraving step is done with photography and acid.

The development started with "etchings", an artist technique of scratching through a protective coating on a metal plate and then letting acid etch grooves into the plate, and using it to print. With the discovery of photography, inventors began using photosensitive chemicals, and that's the trick in photogravure.



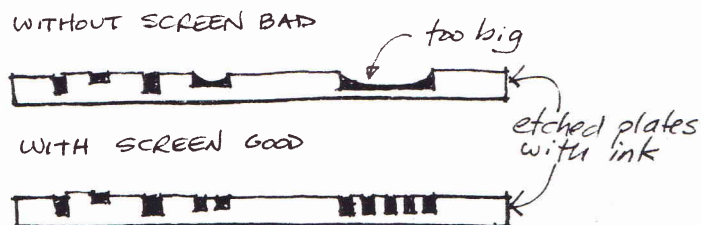
Photogravure plates are steel with a thin surface of copper. The copper is painted with a protective layer, and that layer is light sensitive gelatine. Images are transferred to the surface by putting a film picture over the top and exposing it to strong light. Where it is black, the picture shades and protects the gel, but the unprotected areas of coating become chemically changed so that they cannot be washed off. When the plate is then dipped in acid, the copper is eaten away (somewhat), but not in the protected spots, which were the white areas in the picture. That means the etched recesses, that hold ink, will be only the parts of the design that were dark on the original drawing.



Photogravure plates have the same limitation that hand engraved plates do: areas of solid color must be broken up into small bits in order to print properly.

The normal answer is screening. This means the picture is broken up into a grid of dots separated by a window screen of fine (blank) lines and the darker the area, the fatter the dots are, so that if the inking is controlled carefully, all shades of darkness from

white to solid color can be obtained. The solid color happens because the dots are so close together, that the ink bleeds just enough to spread together. If you have good magnifier, you may see the dot patterns in the gray shaded areas, but not all over. Often its hard to tell a very fine screened photogravure stamp from a line engraved stamp.



It's not absolutely necessary to have a halftone screen to make a photogravure plate. The picture can also be made using some other very fine geometric pattern. Or, if the design itself is totally made of fine lines (and blank areas), no screening is needed. This is like copying a line engraving by photograph instead of transfer roll..

Once you are doing things by camera, it's easy to make a big drawing of a stamp, reduce it to the right size, and set up a whole block of repeating copies, getting the whole printing sheet finished and ready for the acid etching.

Photogravure was first used for stamps in 1914, although the process had been figured out in England by 1858.

## THE PERF-DISPATCH, VOL 2 no.6

Published by the GSLSC  
Club Officers:

President . . . . .	(822-2123) Dave Bueker
Treasurer . . . . .	(576-5261) Gary Hendren
Secretary & Editor . . . . .	(645-4451) Tom Minor
Program V.P. . . . .	David Bledsoe
Banker. . . . .	Hollis Sisk

Contents copyright 1996 Tom Minor/ GREATER ST. LOUIS  
STAMP CLUB

## Philatelic Terms for Beginners

Cover: An envelope or card intended for postal use..

# THE PERF-DISPATCH

Official Newsletter of the Greater St Louis Stamp Club

August 96

## Meeting: Tuesday, Aug 26, 1996

The next monthly meeting will be Monday evening at Parkway Central High School, as usual....

### Juniors Meeting will be at 6:30 PM

What does the condition of a stamp mean when you are buying or selling? Jerry Walterscheid, member and part time dealer, will talk about this part of collecting. Bring duplicate stamps for trading.

### Adults Meeting

Will be at 8:00 PM. Our program will be by the erudite editor of this very newsletter! The subject is Cinderellas as ART: stamps that aren't really stamps but are really fun to look at. You will definitely see things you haven't seen before. Note: randomly selected cinderellas (taken from my junk box) were placed on each *Perf-Dispatch* cover. We will be stamping postcards for Stampfest, so come a few minutes early if you can.

### Upcoming Bourses:



September 8 St. Louis, MO: Stratford Inn at I44 & Bowles Ave. exit, South Outer Road 10AM to 4:30PM. (the monthly bourse for true addicts)




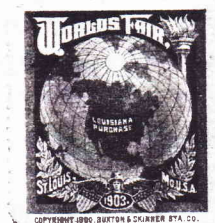
September 21&22 St. Louis, MO: Crestwood Community Center **GSLSC 20th Anniversary StampFest** 10-5 Saturday and 10-4 Sunday.

### Philatelic Terms for Beginners

Tete Beche: A pair of stamps in which one is upside down in relation to the other, either by accident or on purpose.

## STAMPFEST September 21-22

 **DON'T FORGET!** Our second expo this year, celebrating our twentieth anniversary, will be held in one month. Since it will happen just before our September meeting, we will be discussing setting up, schedule, advertising, etc. at this month's meeting.



This one will be at our new and bigger location, so we'll have more room for the stuff that makes it a festival, and not just a bourse. We hope that more people- yes, everyone- will consider doing a little bit of exhibiting. Remember, a one frame exhibit is only sixteen pages (of 8 1/2 x 11 size).

### August Easy Quiz:

1. Who appears on the 1972 stamp honoring stamp collecting? hint: B.F.
2. What sport is honored on a 1974 ten-cent commemorative? hint: Kentucky
3. The Great River Road is on a 1966 stamp. What river does the road follow? hint: a Big river
4. What value is represented by the "C" stamps of 1981? hint: less than 21
5. How many stamps are there on each of the bicentennial sheets? hint: less than six
6. What law is honored on a 1964 postal card? hint: FICA

## ZEPPELIN TALES part 1

Considering how expensive some zeppelin stamps are, its surprising how little is known about zeppelins by most of us. But then, the era didn't last long: from 1900 to 1940.

What made Zeppelins different from most balloons was the rigid frame. Most other balloons were "blimps" a single bag of gas that held a shape just because of the shape of the bag. When inventors began adding fins, propellers and engines, so that they could guide their balloons rather than just drift with the wind (the way hot air balloons do), they soon figured out that the best shape was an elongated sausage. But it wasn't possible to have giant size blimps without the bag buckling under the stress.

Count Ferdinand von Zeppelin (yes, that was really his name) had seen the hydrogen balloons used by the Union side in the Civil War. As a young German military officer, he had been sent to observe the war, and gotten to ride in a tethered balloon. But it was not until the 1870's that the idea of a rigid balloon, big enough to carry a large group of people (or a load of bombs, etc.) occurred to him, and it was not until the 1890's, when gasoline engines became available, that he began to get serious. He was not an engineer, so he hired one and approached the government with designs. No luck.

In 1898, he started a company with an aluminum maker and a few other investors (he had realized that aluminum was the logical metal to build the framework out of). The first zeppelin was the LZ 1, in July of 1900, but it did not fly well enough to get any monetary help from the military. Then came LZ 2 in 1906, which crashed after its first flight. LZ 3 did better in 1907, and LZ 4, in 1908, flew from Friedrichshafen (in Southern Germany) to Switzerland and back. When LZ 4 was damaged by a storm and burned, Zeppelins were so popular that people began sending donations to build another.

A second company founded in 1908 still exists, and

is a successful metals and machinery maker.

Because the army was not particularly interested, Zeppelin started a passenger airship company, DELAG, which operated successfully from 1911 until 1914 and the First World War.

Zeppelins were used by the German military for reconnaissance and bombing during WWI, although the bombing was not very successful. Count Zeppelin died in 1917 at the age of 78.

After the war, the Allies seized the Zeppelin company's latest ships as war reparations. The US got a good deal: LZ 126, which became the *Los Angeles*. Three ships were built in the US by the Goodyear Zeppelin partnership: the *Shenandoah*, the *Akron*, and the *Macon*. All 3 were lost in weather-caused crashes, in 1925, 1933, and 1935, respectively.

LZ 127 was the *Graf Zeppelin*, built in 1928. In October 1928 it made the first transatlantic commercial flight. In August, 1929 the *Graf* traveled around the world. The trip cost about \$250,000: News coverage deals and tickets paid about half of the cost. So what made up the difference? MAIL. Collectors spent more than \$125,000 on cards and letters to be carried on the one trip. These were not franked with the "Zeppelin set": those were issued the next spring, for the May 1930 trip to South America and (up to the US afterwards). This was the inauguration of a commercial service between Germany and Brazil. There was a sizable community of German emigres in Argentina and Brazil, and this made it more commercially viable to have a Europe-Brazil airship service than a Europe-US line. (to be continued)

## THE PERF-DISPATCH, VOL 2 no7

Published by the GSLSC

Club Officers:

President . . . . .	(822-2123) Dave Bucker
Treasurer . . . . .	(576-5261) Gary Hendren
Secretary & Editor . . . . .	(645-4451) Tom Minor
Program V.P. . . . .	David Bledsoe
Banker. . . . .	Hollis Sisk

Contents copyright 1996 Tom Minor/ GREATER ST. LOUIS

STAMP CLUB



# THE PERF-DISPATCH

Official Newsletter of the Greater St Louis Stamp Club

September 96

## STAMPFEST September 21-22

This month's newsletter is the StampFest Program.

### Meeting: Monday, Sep 23, 1996

The next monthly meeting will be on the Monday after the StampFest.

#### Juniors Meeting will be at 6:30 PM

This month is "Bring your favorite cover" contest. We will discuss when to keep covers and when to tear off the stamps.

#### Adults Meeting

Our scheduled speaker is member Norman Potashnick., who will speak on one of his special interests: Zeppelin related material.

Upcoming meetings: Alan Barasch will speak on his long time speciality, the Falkland Islands, in October. Then in November will come our second annual Auction Bucks sell-off. Remember, we need donations of material (or of just about anything) to make a successful auction, and you get extra points for making a donation..

## THE PERF-DISPATCH, VOL 2 NO.8

Published by the GSLSC  
Club Officers:

President . . . . . (822-2123) Dave Bueker  
Treasurer . . . . . (576-5261) Gary Hendren  
Secretary & Editor . . . . . (645-4451) Tom Minor  
Program V.P. . . . . David Bledsoe  
Banker. . . . . Hollis Sisk

Contents copyright 1996 Tom Minor/ GREATER ST. LOUIS  
STAMP CLUB

## Upcoming Bourses:



September 21&22 **GSLSC 20th Anniversary StampFest** 10-5 Saturday and 10-4 Sunday.



October 13 St. Louis, MO: Stratford Inn at I44 & Bowles Ave. exit, South Outer Road 10AM to 4:30PM. (the monthly bourse for true addicts)



October 27, 1996 Springfield, IL or October 26-27, Springfield, MO take yer pick



October 18-20, 1996 MIDAPHIL 96, Kansas City, MO K.City Market Center, 1775 Universal Ave.

## LOCAL ISSUES

On Monday, September 16 the Postal Service gave a reception at the Adams Mark Hotel. Invitations had been sent to many active collectors in the St. Louis area, or you may have seen a notice at Regency Stamps. Those who attended found a lot of free eats, and a very fancy decorated cake. If they got there early enough, they heard a quick ceremony concerning the Riverboats self-adhesive sheet issue. The USPS sent a few representatives up the Mississippi on a steamboat from New Orleans to St. Louis, with several stops along the way, to publicize the stamps.

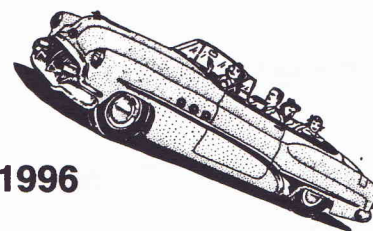
In the meantime, the "Log Cabin" at our downtown P.O. has been removed. Apparently there is no longer a Philatelic Center in St. Louis!?, although Joyce (you may have seen her manning the cabin ) says you can find her with stock at window 7.

I would have traded the cruise for the Philatelic Center, myself.

T.M.



# WELCOME



**Fall StampFest September 21 & 22, 1996**

**Saturday 10am- 5pm**

**Sunday 10am- 4pm**

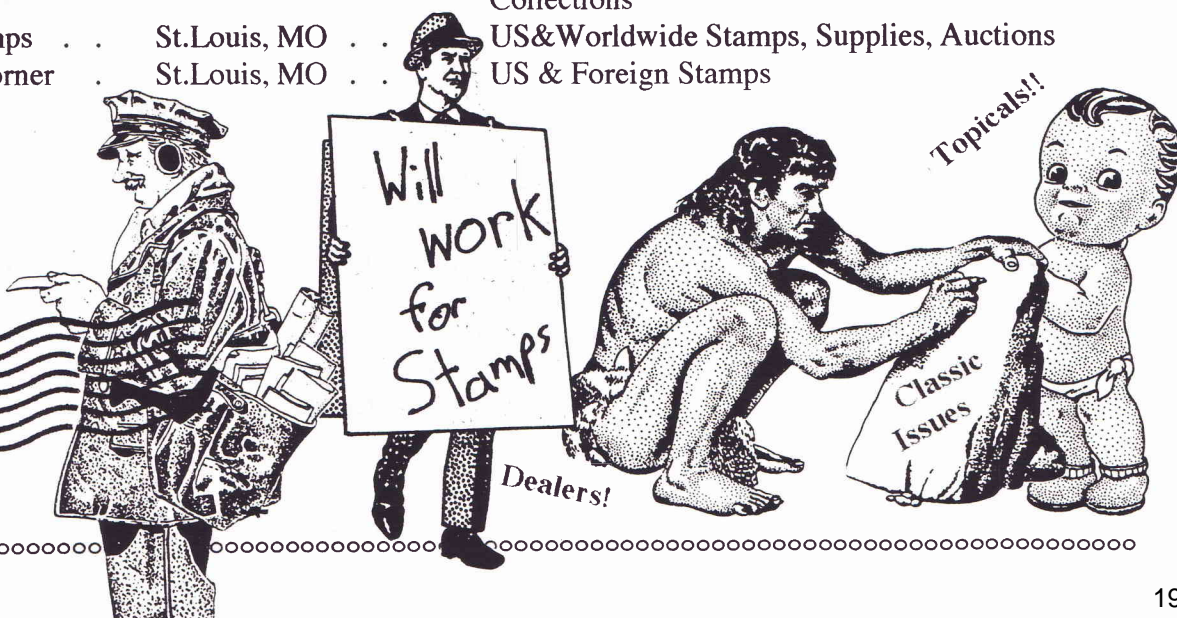
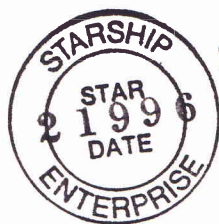
**Celebrating the Twentieth Anniversary of the Greater St. Louis Stamp Club**

## DEALER BOOTHS

## Speciality

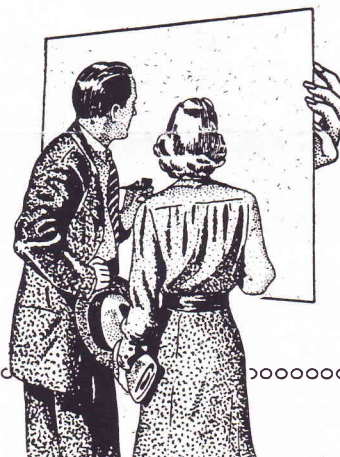
1	JWF Stamps . . .	Bloomington, IN . . .	Postal History-US and Worldwide
2	Denny Peoples . . .	Indianapolis, IN . . .	US to 1940, Wash/Franklins, Revenues, covers, Cinderellas
3	G&L Stamps . . .	St.Louis, MO . . .	US Stamps, Europe, G.Britain, Japan, Scandinavia
4	Star Stamps & More	St.Charles, MO . . .	US, PNC's, Russia, France, Germany
5	Michael Landt . . .	St.Louis, MO . . .	British, French, & German Colonies
6	Fred Boatwright . . .	Sullivan, MO . . .	Worldwide Collections, Japan & Spain
7	Quality Stamps . . .	St. Louis, MO . . .	US Classics, BOB, Match & Medicine
8	St.Ann Stamp Exchange	Columbia, MO . . .	US, BOB, Phil. literature
9	St.John's Stamp Shop	St.Augustine, FL . . .	US and Foreign
10	Bill Welle . . . . .	St.Louis, MO . . .	US Stamps, Collections & lots
11	L&C Stamps . . .	Sedalia, MO . . .	US & Foreign Stamps, Covers, Supplies
12	Jerry Walterscheid . . .	St.Louis, MO . . .	US, British Colonies, Japan, Plate Block, FDC's
13	Blue Valley Stamps . . .	Kansas City, MO . . .	British Commonwealth, Scandinavia, covers, lots
14	Gene Stewart . . .	St.Louis, MO . . .	US & Foreign
15	Harold Pease . . .	Raymore, MO . . .	US Classics, Private Perfs, Revenues, BOB, cut squares
16	SLBF Stamps . . .	Fenton, MO . . .	Worldwide A to Z, topical, covers, Country Collections
17	Regency Stamps . . .	St.Louis, MO . . .	US&Worldwide Stamps, Supplies, Auctions
18	The Stamp Corner . . .	St.Louis, MO . . .	US & Foreign Stamps

Welcome, U.S.P.S.

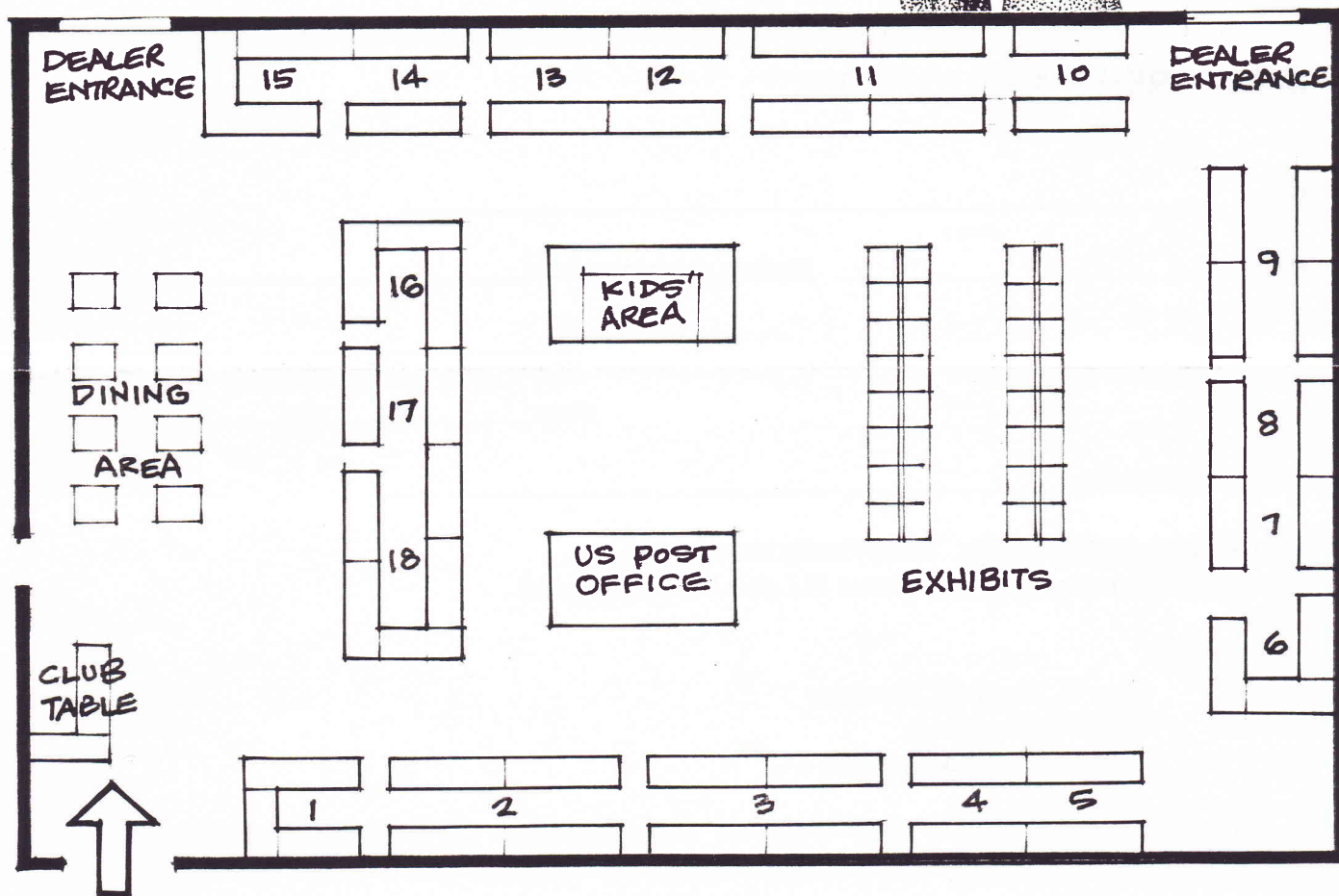


## Exhibits

Title	Exhibitor	Frames
<i>Brazilian Bulls Eyes</i>	Norman Potashnik	1
<i>Christmas</i>	Hollister Smith	1
<i>Falkland Islands</i>	Alan Barasch	1
<i>Fancy Cancels</i>	David Bueker	4
<i>GBE7, A Study in Colors</i>	Robert Kanyok	1
<i>Hawaii</i>	Harry Lischer	4
<i>The Iolani Palace Postal Card: Production and Selected Usages</i>	Elizabeth Nettles, PhD	1
<i>Lindbergh</i>	Harry Lischer	4
<i>Maritime Provinces</i>	Alan Barasch	2
<i>Overprints</i>	Alan Barasch	1
<i>Plate Number Coils</i>	Ralph Persels	1
<i>Postage Due Usages</i>	David Straight	1
<i>Precancels of Missouri</i>	Gary Hendren	1
<i>Prince Edward Island</i>	Alan Barasch	1
<i>Rarities</i>	David Kols	1
<i>US Self-Adhesives: 1974-1995</i>	George Wren	5
<i>US World Fairs Memorabilia</i>	Tom Minor	2



## HALL LAY-OUT





### *An Invitation to Join the:*

# Greater St.Louis Stamp Club

***Founded 1976 APS Affiliate***

Open to anyone in the greater St.Louis area.

## Meetings Monthly

Meetings are usually held on the Fourth Monday of Each Month, with a Juniors' club beginning at 6:30 and Adults' club at 8:00. Each meeting includes a program by a member or visiting speaker, and a Door Prize Drawing and 50/50 \$ Raffle.

### *Annual Special Events:*

**GSLSC StampFest with 25+ Dealer Bourse and Exhibits!!!!**

Christmas Party in December, Summer BBQ Party in July

## Auction Bucks Sale in November

**Extensive Library Available to Members**

Over 300 philatelic books and catalogs are available to check-out.

## *Meeting Each Month Includes Auction of Member Material*

**Occasional collections bought by the club are sold to members at bargain prices!**

**What will you accomplish by joining the GSLSC?**

1. Learn something new every month
2. Improve your collection
3. Make friends with some fellow collectors
4. Don't forget the fabulous newsletter!!
5. Sell your extras
6. Have fun

## MEMBERSHIP APPLICATION:

Name \_\_\_\_\_

Phone \_\_\_\_\_ Mailing Address: street \_\_\_\_\_

city \_\_\_\_\_

state zip

**Collecting Interests:** \_\_\_\_\_

**\$5.00 Individual Membership    \$6.00 Family Membership**

Enclose check made out to the Greater St.Louis Stamp Club and

**SEND TO:**

**Gary G. Hendren, Treasurer**  
12737 Gloenage Dr.  
Maryland Hts., MO 63043

***Or, Call Dave Bueker (849-5402) or Gary Hendren (576-5261) for Information***

# THE PERF-DISPATCH

Official Newsletter of the Greater St Louis Stamp Club

October 96

## Meeting: Monday, October 28, 1996

The next monthly meeting will be Monday evening at Parkway Central High School, as usual.....

### Juniors Meeting will be at 6:30 PM

This month we will practice identifying the issuing country of foreign stamps. Bring your stamp identifying book if you have one, and any stamps you want to study.

### Adults Meeting

Our scheduled speaker is member Alan Barasch, who will speak on his long time speciality, the Falkland Islands (see back page).

Then in November will come our second annual Auction Bucks sell-off. Remember, we need donations of material (or of just about anything) to make a successful auction, and you get extra points for making a donation..

### Tradition

December will bring our traditional XMAS party, presently scheduled for Monday, Dec. 9, at Abeyta's, our traditional location near Crestwood Mall. Drinks are traditionally free, and the tickets are traditionally low in cost. We will send invitations next month, in the traditional manner.

## Upcoming Bourses:



October 26-27 St. Charles, MO: Star Stamps Festival McKinley School Mall, 1701 N 2nd see flyer Sat. 10-5, Sun. 10-4



November 17 St. Louis, MO: Stratford Inn at I44

& Bowles Ave. exit, South Outer Road 10AM to 4:30PM. (the monthly bourse for true addicts)



November 3 Fairview Heights, IL Ramada Inn at I64 and Rt 159 Beeville/Scott Stamp Club 10AM to 4:30PM Sunday Quarterly Bourse

## YET ANOTHER EDITORIAL, but short

On October 1st Canada joined the crowd of fourth world countries and issued a souvenir sheet honoring Disney Corporation, through the excuse of Winnie the Pooh. Printed as the title on the sheet, at the top of the sheet, is "Walt Disney World Florida". I am fascinated to learn that somehow Florida has become a part of Canada.

Did Disney pay Canada to release this sheet? Or are expectations of sales so great that Canada was willing to do this without pay? The Canadian PO began sliding down the slippery slope last year, with an issue tied in with Eatons department stores, but at least that was a Canadian business.

Apparently all stamps are now to be "Infomercials". Prepare for the "Ronco Vegematic" issue in 1997.

Tom Minor

## THE PERF-DISPATCH, VOL 2 no.9

Published by the GSLSC

Club Officers:

President . . . . . (822-2123) Dave Bueker  
Treasurer . . . . . (576-5261) Gary Hendren  
Secretary & Editor . . . . . (645-4451) Tom Minor  
Program V.P. . . . . David Bledsoe  
Banker. . . . . Hollis Sisk

Contents copyright 1996 Tom Minor/ GREATER ST. LOUIS

STAMP CLUB

## FALKLAND ISLANDS

The most frequent question I am asked about the stamps of the Falkland Islands is how I came to collect these issues. It is an interesting story.

Let's return to yesteryear, to 1969. I was in college and a friend laughed because I was still collecting "The World". I decided to find something to specialize in. I opened the catalog at random and chose a country that appeared to be easy to complete in a short time.

I bought the largest packet I could afford then; something like 125 different and set out to find out everything I could about the Falkland Islands.

Little did I know that over 25 years later I would still be looking for elusive items from the Falklands Islands.

Over the years, I have narrowed the focus of my collecting more and more. Where I originally tried to collect all the issues, I then exhibited the years 1878 to 1952. Later I sold off parts of the 20th century material to finance a further narrowing on the 19th century: I now only collect the issues of the Queen Victoria period, 1878-1901.

But you want to know about the stamps. The Falkland Islands began issuing stamps in 1878. The first set included values of 1d, 4d, 6d, and 1/-, paying various rates to Great Britain, Europe, and the rest of the world. At that time the population was about 1,000 or about one-half of what it is today.

Most of the issues are still reasonable. Covers are a problem to obtain; expect to pay over \$100 each for mail before 1935. Notable exceptions for issues are: the 1933 Centenary issue, with less than 4000 complete sets in existence; the 1948 Silver Wedding (Falklands have the smallest printing of all the colonies); and the first Queen Elizabeth definitive for the Dependencies; these have always been elusive.

A short word about the Dependencies. There are

groups of islands about 1000 miles distant from the Falklands that have economic and political ties. These include South Georgia, South Sandwich, South Orkney, Graham Land on the Antarctic Continent, and others. Over the years they have sometimes used Falklands stamps, sometimes had their own, or had special overprints.

For endless variety and an enjoyable collecting experience, I heartily recommend the stamps of the Falkland Islands.

Alan Barasch



## ISLAS MALVINAS

Where are these islands? Way down south, much closer to Argentina than to Great Britain. The Argentines refer to the Falklands as the Malvinas Islands, a traditional name derived from French colonists who settled on East Falkland in 1764.

What are they like? There are two main islands (East & West Falkland) of around 2500 sq. miles each, and a batch of small islets (about 200). They are essentially treeless and windswept, with plenty of marshy pastureland for the sheep (the main inhabitants), and a few folk who don't mind rain for 250 days of the year. In the summer the average temperature is 47.

The first explorer to actually stop off was a Dutch sailor, Van Weert, in 1600. A Englishman, Strong, was the first to find the channel between the two islands. But nobody did much of a job in colonizing them. The Spanish bought out the French colony in 1770, but the British took control in 1833, after Argentina became independent. So for 150 years they've been saying they were robbed.

In April 1982 Argentina invaded and occupied the islands for two months. The British sent a task force, and the occupying group surrendered on June 14. But Argentina still claims sovereignty.



# THE PERF-DISPATCH

Official Newsletter of the Greater St Louis Stamp Club

November-December 96

## Meeting: Monday, Nov. 25, 1996

The monthly meeting will be the Monday evening before Thanksgiving, at Parkway Central High School, as usual...

### Juniors Meeting will be at 6:30 PM

This month will be give-away time.

### Adults Meeting

Will be at 8:00 PM. Our program will be the second ever "Auction Bucks" Auction sale.

We will have a short QUIZ GAME as our program first, and **everyone** will be given extra bux just for attending, so **everyone** will have something to spend. A good time is guaranteed.

The December meeting will be our annual Christmas bash on the Ninth. We will be taking reservations and money for the party at the November meeting, but you may also mail in (see the enclosed flyer),

## Auction Bucks 1996

Remember: Any auction bucks you have from 1995 are worth only half face value, so COME EARLY, see Hollis before the meeting, and exchange your old bucks for new ones. Old bucks will not be accepted during the auction: new ones were rubber stamped saying 1996, etc.

Lots will be set out for viewing early before the meeting.

Members must bring their auction bucks (no credit) and pay off each sale item as it is bid, so as to avoid problems with overspending.

Leftover auction bucks will again be usable next year, but will be devalued by half.

## Special Thanks

Thanks to all who donated something for the BUX Auction: to local dealers RonMcVay (#62), Bill Raible (#E, ), Bill Weller (#P), and especially Gus of G&L Stamps (#Q).

A very special thanks to Mr. David Kols of Regency Stamp Store for the Minkus Album (R) and foreign lots.

Thanks to all members who donated things.

## AUCTION CATALOG

### US Lots: All Used except where noted

Scott number		catalog listed value
1. #26	trimmed edge	\$3.25
2. #35		\$52.50
3. #65	PAID cancel	\$1.35
4. #65	year date cancel	\$1.00
5. #78	trimmed perf	\$50.00
6. #87	grille w fancy cancel	\$70.00
7. #88	creased	\$11.00
8. #94	grille	\$2.50
9. #114	trimmed edge	\$7.00
10. #147	creased	\$.50
11. #148	NY foreign mail cancel	\$12.00
12. #157		\$10.00
13. #159		\$10.00
14. #161		\$11.50
15. #178,183	negative cancels	\$6.50
16. #182	negative F cancel	\$1.25
17. #184 (2)		\$.30
18. #187		\$15.00
19. #206		\$.40
20. #209	cancel	\$2.50
21. #210	star cancel	\$.15
22. #212	St.Louis cancel	\$.65
23. #213	maltese cross	\$.15

(continued on next page)

## AUCTION CATALOG Continued

Scott no.	catalog listed value
24. #215	\$11.00
25. #219D	\$ .45
26. #226	\$1.75
27. #231 (2) normal & broken hat	\$.35
28. #233	\$5.50
29. #234	\$6.50
30. #235	\$18.00
31. #236	\$8.00
32. #237	\$5.50
33. #247	\$.85
34. #254	\$2.00
35. #258	\$5.00
36. #267 star cancel	\$.15
37. #268	\$.65
38. #271	\$2.50
39. #275	\$14.00
40. #282c,283	\$2.20
41. #295	\$.75
42. #302 perf 10	\$2.00
43. #303	\$.90
44. #331,332,333	\$2.05
45. #335	\$1.50
46. #340	\$3.75
47. #422 perfin	\$9.50
48. #438	\$2.50
49. #452	\$1.40
50. #465	\$1.00
51. #470	\$3.75
52. #476 precancel	\$7.50
53. #481 margin piece	\$.85
54. 489	\$2.50
55. #518	\$1.20
56. #537	\$2.75
57. #E3	\$15.00
58. #U07 cut square official	\$2.50
59. U09 Unused cut square Official	\$35.00
60. #U017 Unused cut square Official	\$5.00
61. #U049 Unused cut square Official	\$30.00
62. Post Office Truck Souv. Sheet	\$50.00
63. # PNC 20¢ cog railway strip of 7	\$3.00
64. #948,948a&b Souvenir Sht	\$1.00
65. #1075 Souvenir Sheet	\$2.25
66. #W389 mint postal stationery entire	\$16.00

*Good Stuff To Be Sprinkled Throughout the Auction as the Mood hits Dave B.*

A. Bag o' Binders	value?
B. cigar box of used US mixture	\$10.00
C. UNION Patriotic Cover	\$30.00
D. UNION Patriotic Cover	\$30.00
E. USPS Olympics artwork: numbered paper relief sculpture & 5 stamps,	value ?
F. Mystery lot	\$25.00+
G. Mystery lot	\$25.00+
H. Anti-Glare/Anti Radiation Filter for Computer Screen, (D. Bueker)	retail \$99.
I. Wrist Rest for Computer	retail \$25.
J. Mouse Rest for Computer	retail \$10.
K. Watermark fluid	\$8.50
L. USPS Eagle design T-Shirt	value \$10.
M. British Commonwealth 1937 common design for KG VI, two framed panels	value??
M. Another USPS Eagle design T-Shirt	value \$10.
N. Pair of MINKUS BRITISH CARIBBEAN Stamp Albums, NEW, with pages thru 1980's.	retail \$500+
O. 1997 Scott US Specialized hot off the press (donated by First Lady Bueker)	\$35.00
P. Mystery box	\$30.00
Q. Scott Catalogs volume I-V for 1996	each \$35.00
R. MINKUS HUNGARY Album NEW	\$100.+
S. Gift certificate to Regency Stamp Store. Actually buy something you want!!	\$25.00

*Foreign Stamps***Japan**

67. Eleven Japan stamps, mint \$6.00  
 As we go to press: donated lots from Regency Stamps have not arrived, so we are not able to list everything

**THE PERF-DISPATCH, VOL. 2, NO. 10**

Published by the GSLSC

**Club Officers**

President . . . . .	(822-2123) Dave Bueker
Treasurer . . . . .	(576-5261) Gary Hendren
Secretary & Editor . . . . .	(645-4451) Tom Minor
Program V.P. . . . .	David Bledsoe
Banker . . . . .	Hollis Sisk