

1998-02-perf-dispatch	2
1998-03-perf-dispatch	4
1998-04-perf-dispatch	6
1998-05-perf-dispatch	8
1998-06-07-perf-dispatch	10
1998-08-perf-dispatch	12
1998-09-perf-dispatch	14
1998-10-perf-dispatch	16
1998-11-12-perf-dispatch	18

# The Perf-Dispatch

Official Newsletter of the Greater St. Louis Stamp Club

February 98

## Meeting: Monday, February 23, 98

The monthly meeting will be Monday evening at Parkway Central High School.

### Adult meeting:

8:00 PM: For this month, our program will be a talk by Alan Barasch on **Geneology and Philately**. This is based on an exhibit he's been developing showing Queen Victoria & her descendants (as pictured on stamps). Come discuss researching your family tree, too.

We'll also be handing out an updated club roster at this month's meeting.

### Gary's Breakfast Club: March 9

Another Breakfast Club meeting:

February 9, 1998 at LePeep Restaurant Hwy 141 & Olive (just west of Dierbergs) at 8:30 am. The topic for discussion will be Philatelic Insurance.

Give Gary Hendren a call if you'd like a little more info.

### Juniors Take a Trip

The Juniors will not meet on Feb.23 as normal, but will take a fieldtrip to the Hazelwood Bulk Mail Center on Saturday Feb.27. Meet at the Center a few minutes before 3:00 PM. Call 576-5261 (Mr.Hendren) before Thursday Feb.26 to let Gary know how many kids & adults will be attending. The tour will last approximately 45 minutes.

The location is 5800 Phantom Drive off McDonell Blvd. between I270 and Lindbergh.

## STL STAMP EXPO March 6-8, 1998

The annual St. Louis Stamp Expo is here. The location is the same as last year, the Henry VIIIth Inn on N. Lindbergh, just north of I-70. You should be receiving the official program sometime soon in the mail.

### FRIDAY MARCH 6:

Bourse 11:00AM to 6:00PM, no meetings.

### SATURDAY MARCH 7:

Bourse 10:00 to 6:00 Lectures from 10 to 2, including Alan Barasch and the Falkland Island collectors. Saturday evening banquet at the Hotel, bar opens at 6:00. Awarding of prizes for exhibits, Peter Rexford dinner speaker. Tickets may be bought through the club (or ask at Regency).

### SUNDAY MARCH 8:

Bourse 10:00 to 4:00 Lectures at noon. Regency will be holding their March Auction during Saturday and Sunday, starting at 11 AM both days.

Volunteers are always needed, especially on Friday. If you would like to help, please contact a club officer. Remember: helpers get in free.

### Philatelic Terms for Beginners:

#### Dawks or Scinde Dawks:

Scinde is a region in India. Dawks refers to a traditional runner system which still has as a descendant express service operating (after about 2000 years) There are some collectibles from the time of British control (East India Co. ran the service then).

## It's Dues Paying Time Again

Please check your mailing address sticker. You are paid up through the year shown. If it doesn't say 98, it's time to renew. If you can't pay at a meeting, mail your money to **Gary Hendren, treasurer; 12737**

**Glenage; Maryland Hgts., MO 63043**. Still only \$5.00 per person or \$6.00 per family (write check to GSt.L Stamp Club). Pay before March 1st and receive Auction Bucks.

## Tidbits About Steamships

The recent movie *Titanic* has gotten people interested in this era of the great steamship liners. It started about 1890 with ships built by the Cunard Line of Britain, the *Campania* and *Lucania*. A "space race" developed between companies and countries over having the biggest and best ocean liner. Ships went from under 500 feet long to 882' (*Titanic*) to 950' (*Bismarck*) in about 20 years.

There were only a few companies that could afford the prestige of the superliner "size" race: Cunard and White Star Lines in Britain and North German Lloyd and the Hamburg-America Line in Germany. And there was only one route that could justify these 3000 person ships: Europe to America.

Although there was liner traffic between other continents (Europe & South America especially), there was nothing like the constant traffic between America and Europe. And that's because of the flood of immigration. Between 1900 and 1915, 12.5 million immigrants crossed the Atlantic to North America.

Of this flood, 3 million were from Italy, 3 million from the Balkan countries, 2.5 million from Russia and the Slavic countries, 1 million from Scandinavia, about 1.5 million from the British Isles, 500,000 from Germany, and the other 1 million from other European nations

Ninety percent of these immigrants made the voyage in steerage or third class. A typical superliner built in 1900 would have used 200 crew for 300 first class, 150 second class, and 2000 steerage passengers (some ships had third class).

There was money to be made in transporting so many, even if a steerage ticket was cheap: \$25 vs. hundreds for a first class cabin. Although the food was decent, people slept in dormitory rooms, and bathrooms, sinks, etc. were in short supply. On the way back, the ship packed in extra cargo to make up for the lack of passengers going east.

The trip generally took eight days or more to go 4000 miles: that means 500 miles a day, only 21 miles per hour. Not very fast by airplane standards.

When the ship docked in New York City or Hoboken NJ, lower class immigrants were sent to Ellis Island. Upper class went directly to Manhattan (money talks). Only about 2% were rejected at Ellis Island (because of health); customarily, the shipping line carted them back home at no cost. One third of all people living in the U.S. today arrived, or are the descendants of those who arrived, via Ellis Island

After a stop for WWI, the tide slowed drastically, even before an increase in racism set off anti-immigration sentiment and quota limits. Then a new phenomenon appeared: tourist travel by a growing middle class.

Mail was never a major part of shipping income, although small goods that were valuable (like mail) were lucrative to carry.

No big ships show up in the Celebrate the Century stamp series for 1900-1920: American lines weren't in the race, compared to the Europeans. There was a ship *St. Louis* however, going from New York to England for the American Line (554' long, 1300 passengers).

## The Perf Dispatch Vol.4, No.2

Published by the Greater St.Louis Stamp Club

### Club Officers

President . . . . .	David Bueker
Treasurer . . . . .	Gary Hendren
Secretary & Editor . . . . .	Tom A. Minor
Vice President . . . . .	Alan Barasch

Contents co 1997 T.Minor/GSLSC

PS:

The most recent issue of *Linn's Stamp News* contains an article on Sea postal markings of the pre WWII period, for those with a further philatelic interest.

# The Perf-Dispatch

Official Newsletter of the Greater St. Louis Stamp Club

March 98

## Meeting: Monday, March 22, 98

The monthly meeting will be Monday evening at Parkway Central High School.

### Juniors Meeting

The Junior Club will meet at 6:30 PM. Bring your United States Album: there will be stamps available from a recent donation to fill a few holes in your collection.

### Adult meeting:

8:00 PM: For this month, our program will be a slide show on **Private Die Proprietary** stamps, the first sales tax stamps (see notes on back).

A few people who have not yet paid dues should find an enclosed reminder slip.

### Gary's Breakfast Club: April 13

Another Breakfast Club meeting:

April 13, 1998 at LePeep Restaurant Hwy 141 & Olive (just west of Dierbergs) at 8:30 am. The topic: *When it's time to get rid of your collection* (or messy accumulation). Possible surprise guest who has had experience in this area.

### STL STAMP EXPO March 6-8, 1998

The turnout for the annual Stamp Expo was surprisingly good, especially considering the weather. Many GSLSC members were involved in volunteer labor, exhibiting, or wheeling and dealing. Congratulations are due to our award winning exhibitors Paul Miles, Norman Potashnik, and Alan Barasch.<sup>1</sup>

We can all take pride in the national quality show that has developed in just four years. Many thanks to all who took part, and remember, participation is worth Auction Bucks.

## Upcoming Bourses:



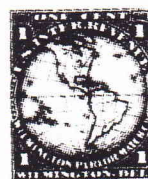
April 25-26; St. Charles, MO; Star Stamps and More Stamp Festival; refer to enclosed flyer for details.



April 12 St. Louis, MO; Stratford Inn at I44 & Bowles Ave. exit, South Outer Road 10 to 4:30.

## This Month's Stamps

This month's newsletter has been mailed with the Celebrate the Century stamps for 1900-10 and 1910-20. 15 stamps per decade x 10 decades means 150 different designs in 3 years. On your mark, get set, PAY! The stamps are also a unique<sup>2</sup> new size: square, 31x31 mm.



## Philatelic Terms for Beginners:

**Revenues:** Government issued stamps that were not used for mail, but as receipts showing the payment of some tax.

The earliest "stamps" were embossed or printed seals on a tax document.

Remember your US History and the Stamp Act of 1764? The British wanted the colonies to pay more of war debts by buying tax stamps to be affixed to all documents or printed goods. We didn't like it. Maybe that's why collecting revenue stamps has never been big in the US.

1. My apologies for anyone forgotten.

2. At least, I think so for US stamps.

Thos. Allen —



## BECOME A PACKET DEALER!

Don't know what to do with all those duplicates??  
Can't sell them. Can't trade them. Don't want to  
burn them. Here's an idea for you.

The APS receives requests from many, many kids  
as well as some adults who are just beginning to  
collect stamps. They ask for assistance and stamps  
to get started. Many staff members at APS  
headquarters have put together packets of stamps to  
be sent to these individuals. This requires their time  
and their stamps. A request has gone out for help  
(we saw it in the APS Chapter bulletin, etc.)

Here's the plan. Put 25 off paper U.S. stamps in a  
small glassine envelope- we suggest that you put no  
more than 5 definitives<sup>1</sup> among the 25 and/or put 25  
off paper foreign stamps in a separate envelope.  
Label each envelope as U.S. or foreign, and bring to  
the meeting in March, April, or May. If you want to  
participate, but can't get to one of these meetings,  
mail to Gary Hendren before June 15. He will  
personally deliver them to State College, PA. in late  
June.

Each packet will earn the preparer \$5 in Auction  
Bucks with a maximum of \$100 to be earned in  
each of the two categories. Let's make a significant  
contribution in the name of the Greater St.Louis  
Stamp Club.

Gary Hendren

Gary's Mail address is 12737 Glenage Dr.,  
Maryland Hghts., MO 63043

1.Does Gary actually get commemoratives in the mail? TM

### **The Perf Dispatch Vol.4, No.3**

Published by the Greater St.Louis Stamp Club

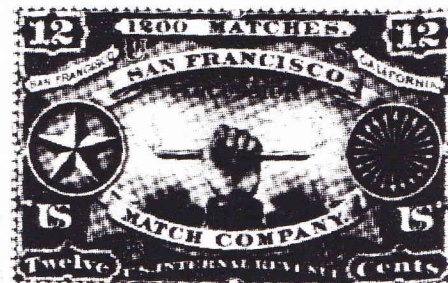
#### Club Officers

President	David Bueker
Vice President . . . . .	Alan Barasch
Treasurer . . . . .	Gary Hendren
Secretary & Editor . . . . .	Tom A. Minor

Contents co 1998 T.Minor/GSLSC



Eichele & Co.



San Francisco Match Co. — RO165

## SALES TAX BEGINS

This small collecting area with a big name: Private  
Die Proprietary Stamps.

The phrase refers to tax (Revenue), not postage  
stamps. The costs of the Civil War led the Union  
Government to start the first consumption taxes.  
Certain manufactured goods were only to be sold  
with tax stamps pasted on the wrapper (as proof the  
maker had paid a federal tax).

Time was short, so manufacturers were permitted to  
get these stamps printed for themselves (rather than  
wait for the government). As they were engraved, a  
master printing die was made for each company  
needing stamps, thus the name "private die."  
Companies were allowed to develop their own  
design, so each tax stamp became a small  
advertising label: "proprietary".

The items taxed were a strange assortment: matches,  
perfumes, playing cards, and over-the-counter  
medicines. Why? there weren't many widely used  
manufactured consumer goods in 1862, and it  
would have been impossible to tax things that were  
often homegrown or made by local craftsman. For  
example, tobacco was sold as a plug- there weren't  
cigarettes to be taxed. Imported items were already  
subject to custom tariffs as they came into the  
country.

There were other taxes begun at this time: a tax on  
transaction documents like checks, land or stock  
sales, etc. Different Revenues were printed for  
these.

By 1883 private die stamps were phased out, so  
there are only about 1000 collectible varieties of  
these very entertaining looking stamps.

# The Perf-Dispatch

Official Newsletter of the Greater St. Louis Stamp Club

April 98

## MEETING: Monday, April 27, 1998

The monthly meeting will be Monday evening at Parkway Central High School.

### Juniors Meeting

The Junior Club will meet at 6:30 PM. There will be more giveaways and a discussion about setting up for the May Exhibit.

### Adult meeting:

8:00 PM: This month, our program will be by a former member and president, David Straight, on the unusual subject of **PNEUMATIC MAIL**. This is not something you'll see very often. (See short article on pg. 2).

### Gary's Breakfast Club: May 11

Another Breakfast Club meeting:

May 11, 1998 at LePeep Restaurant Hwy 141 & Olive (just west of Dierbergs) at 8:30 am. We will continue with the topic: *What's your poor wife gonna do with that crazy collection?* Possible guest speaker.<sup>1</sup>

### Reminders:

#### Memorial Day

The May meeting will be on Tuesday, May 26 because of Memorial Day.

#### Become a Packet Dealer!

Don't know what to do with all those duplicates? There's still time to make packets for APS beginners' giveaways (prepare glassines of 25 stamps-see last month's newsletter).

<sup>1</sup> The speaker should be Gary's wife, but I doubt it will be.

## Upcoming Bourses:



May 10 St. Louis, MO; Stratford Inn at I44 & Bowles Ave. exit, South Outer Road 10 to 4:30.

### MEETING MINUTES:

Justice triumphed at our last meeting, as Gary H. and Tom M. won the attendance and 50/50 drawings, respectively. Those who attended also received small (very very small) free samples of Prinz stamp mounts.

## Trans-Mississippians

Due to be released in June by the USPS: reprints of the "Trans-Mississippians", the commemorative stamp set of 100 years ago, first issued to publicize a world's fair in Omaha, Nebraska. The GSLSC Library now has a copy of the recent Randy L. Neil book, *The Trans-Mississippi Issue of 1898*.

The nine stamp set was instigated by Edward Rosewater, editor of *The Omaha Daily Bee* newspaper, who also was chief promoter of the fair itself. They are generally regarded as very pretty engraved stamps, but they could have been much more original, and certainly more controversial, if they had followed the essay art submitted by Rosewater. The five ink wash drawings are on the back page. The designs are unusual in their vertical format, their varied and modern frames, and their subject matter choices (which did influence the actual set as issued).

The \$2 value, showing the Eads Bridge at St. Louis, will become the 2¢ issue for the 1998 reissue. It seems St. Louis has been devalued over 100 years.





## Notes On Pneumatic Mail

Practically everyone in the US has used a pneumatic mail system- at a drive-in bank. The basic idea is just what you think: a message is put into a special capsule that fits in a tube, which leads underground to some other destination. Air pressure blows the capsule through the tube to the other end. The advantage is that no one has to get up off their lazy rear ends to carry the message from the car to the bank clerk.

Ever seen a department store with a tube system? The C.R.Anthony's in my home town had what I thought was even better: Clerks at the checkout counter would send the money up to the office in small cannisters, suspended by exposed wire and thrown by spring action. Everyone could watch your receipt zoom up to the mezzanine.

The tube idea was so attractive (we're all lazy) that underground tubes were installed in Paris, London, Berlin, and Vienna (that I know of: perhaps Mr. Straight knows of other cities).

The February 1998 issue of *American Philatelist* contains an article on the Viennese Rohrpost (Tube Mail), which lasted from 1875 to 1956.

In Vienna, the tube mail cost around seven-times the regular local rate. For that, however, you got an extra speedy special delivery: after the letter was sent to the nearest tube post station, it was delivered immediately by messenger, who would also wait up to five minutes if you wanted to send a reply. And that was cheaper than a local telegram in the late 1800's.

## AUCTION BUCKS REFRESHER

APS Member	\$25.
Article in Newsletter	\$10.
Attendance at meeting	\$10.
Bringing A Guest	\$10.
Club Auction, lot in	\$5.
Club Auction successful buyer	\$5
Club Officer	\$50
Donation of Item for November Auction	\$10
Donation or work with Junior Club	\$10
Dues Paid before March 1	\$20
Exhibiting at shows - 1 Frame minimum with write-up	\$100
Giving a Club Program	\$100
Participation in Program	\$10
Signing up a New Member	\$25
Working at Stamp Bourse/Expo	\$50
50/50 Participant	\$5
EXPO Banquet	\$20
Exhibit at Club Meeting	\$50

## **The Perf Dispatch Vol.4, No.4**

Published by the Greater St.Louis Stamp Club

### Club Officers

President	(849-5402) David Bueker
Vice President . . . . .	(994-1243) Alan Barasch
Treasurer . . . . .	(576-5261) Gary Hendren
Secretary & Editor . . . . .	(645-4451) Tom A. Minor

Contents co 1998 T.Minor/GSLSC

# The Perf-Dispatch

We're Here Because We're Not All Here Club

May 98

## Meeting: TUESDAY, May 26 !!

The monthly meeting will be Tuesday, not the usual Monday evening at Parkway Central High School.

### Juniors Meeting

The Junior Club will meet at 6:30 PM (also on Tuesday). This is exhibit day, so please arrive a few minutes early for setting up.

### Adult meeting:

8:00 PM: For this month, our program will be a lecture on **Czechoslovakia** by Jim Adler, well known to many St.Louis collectors.

We will also have a number of special items for auction from club holdings, see the back page.

### Gary's Breakfast Club: June 8

Another Breakfast Club meeting:

June 8, 1998 at LePeep Restaurant Hwy 141 & Olive (just west of Dierbergs) at 8:30 am. Bring a small collection or item for show & tell.

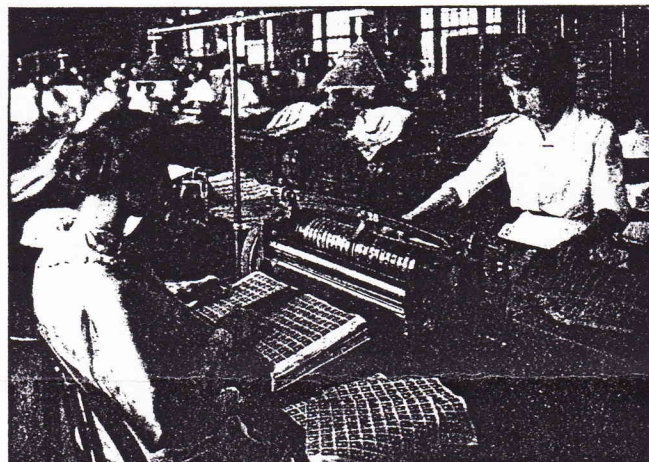
### Reminders

One last time to make packets for APS: bring them to the meeting or get them to Gary Hendren before June 15.

Junior exhibit judges will get a reminder note from G.H (enclosed).

### Survey Question:

Check your mailing label to see if the label has a Y listed underneath the membership date. A "Y" means you are an APS member (No Y means you aren't). That info is needed as the club applies for free APS membership dues for '99. If your label is incorrect due to a change in your APS membership, please call Gary Hendren (576-5261)



### This Month's Newsletter Stamp

Five different designs honor Alexander Calder, an American sculptor born July 22, 1898. Calder got a mechanical engineering degree, but changed his mind four years later and went back to art school.

Calder is internationally known for his development of the "Mobile", a suspended sculpture of balanced wires and abstract organic forms. He also developed the "Stabile", a stationary sculpture made of flat silhouette plane pieces, usually abstract but suggesting an animal/human shape.

Of the five stamps, the 1945 "Portrait of a Young Man" is a stabile; three are mobile sculptures, and one stamp, 1928 "Rearing Stallion", is one of his early wire sculptures.

### The Perf Dispatch Vol.4, No.5

Published by the Greater St.Louis Stamp Club

#### Club Officers

President . . . . .	(849-5402) David Bueker
Treasurer . . . . .	(576-5261) Gary Hendren
Secretary & Editor . . . . .	(645-4451) Tom A. Minor
Vice President . . . . .	Alan Barasch

Contents co. 1997 T.Minor/GSLSC



Lot #1  
#94  
(GRILL)  
RED CANCEL  
C.VAL.#4.25  
M.BID \$2.00



Lot #2  
#97  
FANCY BLK.  
CANCEL  
(GRILL)  
C.VAL.#180.00  
M.BID \$20.00

Lot #3  
#323  
LOUISIANA  
PURCHASE  
C.VAL.#3.75  
M.BID \$1.00



Lot #4  
#324  
LOUISIANA  
PURCHASE  
C.VAL.#1.50  
M.BID \$ .50



Lot #5  
#328  
JAMESTOWN  
C.VAL.#4.00  
M.BID \$1.00



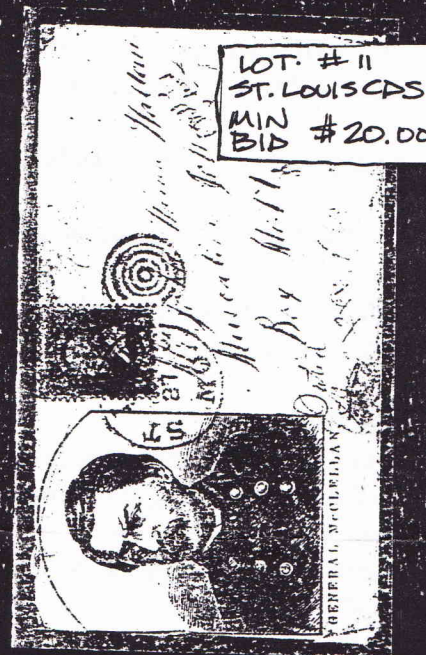
Lot #6  
#350  
JAMESTOWN  
C.VAL.#3.50  
M.BID \$1.00



Lot #7  
#398  
PAN-PACIFIC  
C.VAL.#.50  
M.BID \$.20



Lot #8  
#400A  
PAN-PACIFIC  
C.VAL.#16.00  
M.BID \$200



LOT #11  
ST. LOUIS CDS  
MIN BID \$20.00

Lot #9  
#437  
C.VAL.#7.25  
M.BID \$1.50



Lot #10  
#439  
C.VAL.#16.00  
M.BID \$2.00

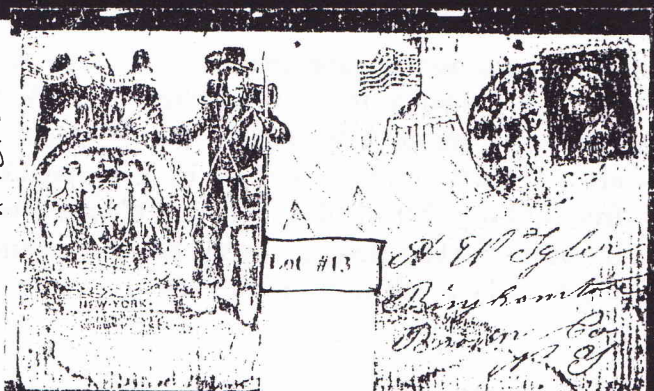


LOT #12 PATRIOTIC  
TO WISCONSIN  
MIN. BID \$16.00



Lot #12

LOT #13 PATRIOTIC  
WASH.D.C. CDS TO N.Y.  
MIN. BID \$18.00



Lot #13



# The Perf-Dispatch

Whatchamucallit of the Greater St.Louis Stamp Club

June-July 96

## Meeting: Monday, June 22

The monthly meeting will be back to the usual Monday evening at Parkway Central High School.

### Juniors Meeting

The Junior Club will not meet this month. The auction will be the August meeting.

### Adult meeting:

8:00 PM: For this month, our program will be another try at the lecture by Alan Barasch, on the descendants of Queen Victoria.

For those who missed last month's meeting, Jim Adler, our scheduled speaker, was unable to make it, due to airport delays. So we had a very enjoyable quiz, administered by that Ph.D. (daemonic philatelist), G.Hendren.

### Gary's Breakfast Club: July 13

Another Breakfast Club meeting:

July 13, 1998 at LePeep Restaurant Hwy 141 & Olive (just west of Dierbergs) at 8:30 am. Show & tell, etc.

### Reminders

As always, we would be delighted to have members volunteer to give programs. We occasionally make use of APS slide programs, (and will again this year), but everyone I know prefers a real live speaker. If you're interested, but need assistance in slide making or other details, contact one of the officers

## July Meeting

There won't be one. Our summer party will be held at the StampFest in September.

## Upcoming Bourses



Coming in September 12 & 13: our very own **Greater St.Louis Stamp Club Annual StampFest**, at the Crestwood Center. Regency Stamps will have its fall auction at the Center,! Exhibits, dealers, door prizes, great food, and picnic too!



July 12 St.Louis, MO; Stratford Inn at I44 & Bowles Ave. exit, South Outer Road 10 to 4:30. Jerry, Ron, and the gang hang out in Fenton.

## Quiz

What were the occupational groups used for the Famous Americans of 1940?.



## The Perf Dispatch Vol.4, No.6

Published by the Greater St.Louis Stamp Club

### Club Officers

President . . . . . (849-5402) David Bucker  
Vice President . . . . . (994-1243) Alan Barasch  
Treasurer . . . . . (576-5261) Gary Hendren  
Secretary & Editor . . . . . (645-4451) Tom A. Minor

Contents co. 1998 T.Minor/GSLSC

## COIL WASTE

Coil Waste stamps are among the oddest issues of early twentieth century US stamps— and very rarely found used legitimately on cover.

The practice of salvaging waste from coil production began in 1919, during the Washington-Franklin period, when the Bureau of Engraving and Printing accumulated 85,000 sheets of 170 stamps each, all 1¢, 2¢, and 3¢ stamps that had been laid aside as “mutilated”. BEP director James Wilmeth proposed to the Post Office Department that they be perforated and distributed.

Wilmeth’s plan was approved, including his packing scheme which kept sheets of 170, even though that was a very odd size.

Why a sheet of 170 stamps?— and why use “mutilated” stamps? The salvage all came from webs of rotary press stamps printed to make sidewise coils. (“Webs” are the big continuous rolls of paper). Most of it was ‘short ends’, remnants of the roll used in starting up or shutting down the rotary presses. Those leftover bands of stamps were hand cut into sheets, following the cylinder joint lines. This yielded sheets of 170— a strange size, but it kept all the stamps of one plate (and plate number) together, considered important for BEP record keeping, plate replacing, etc.

Many of these sheets had also been run through a perforator section after the printer- but only in one direction, since they were going to have been sliced into coils. The flat sheet perforator was gauge 11, and the rotary perforator was 10. Washington-Franklin series Scott 538,539,540,541,545, and 546 are all various combinations of 10 and 11 gauge perforations in coil waste.

Four coil waste varieties were also produced using early printings of the 1922 series: Scott 579 and 595 (2¢ issue), and Scott 578 and 594 (1¢ issue). But these were the last of the “coil waste” phenomenon. So why did it end?

Two reasons: Profit and Politics.

Republican President Warren G. Harding was elected in 1920, and following tradition, Republicans replaced as many appointed officials as they could, including the Postmaster General, 23,000 postmasters around the country, and officials in other departments like the BEP.

Third assistant postmaster General in Washington was former new Jersey congressman Irving Glover, whose wife was an ardent stamp collector. He was in charge of stamps & philatelic matters, and was sympathetic to collectors.<sup>1</sup>

It was reported in the Philatelic Press that “certain outstanding collectors” had complained about the unannounced issuing of often rare stamps that no average collector could hope to collect<sup>2</sup>. This would almost certainly have involved Mr. & Mrs. Glover.



But there was another practical reason. It just wasn’t worth the labor cost, even in that era, to handle and hand cut the long webs of roll paper into sheets for hand perforating machines. Automation was already on the way.

Web ends were typically destroyed after 1924.

1. He formally established the Philatelic Stamp Agency, which had been an occasionally active window at the central DC Post Office. Collectors could actually order by mail, sheets were selected for centering, and older stamps were available for a prolonged period.

2. Refer to Bugs Bunny

3. This article based primarily on the book *US Stamps 1922-26*, G. Griffith.



# The Perf-Dispatch

Newsletter of the Greater St.Louis Stamp Club

August 9

## Meeting: Monday, August 24

The monthly meeting will be Monday evening at Parkway Central High School.

### Juniors Meeting

The Junior Club meeting will be the Auction. Don't forget to bring all your auction bucks.

### Adult meeting:

8:00 PM: The meeting theme this month is *Gettin Ready for Stampfest*. First order of business will be our usual stamping party, to get those advertising postcards out to the public.

Our program, as time permits, will be a workshop on exhibiting. We<sup>1</sup> and some other local exhibitors (people you know) will be discussing/show & telling on exhibiting pages. No lecturing allowed, just some examples and such.

As part of our annual *Stampfest*, we'll be trying something new: our annual *Summer Party* will be on Saturday evening in Crestwood park. This will be a chance to meet and fete visiting dealers, have a party, and perhaps attract some new members. So please come Monday prepared to volunteer your bit of help and food.

As always we'll be looking for those willing to work at the Stampfest itself.

### Gary's Breakfast Club: September 14

Another Breakfast Club meeting:  
September 14, 1998 at LePeep Restaurant Hwy 141 & Olive (just west of Dierbergs) at 8:30 am.

<sup>1</sup> Alan Barasch, Gary Hendren, and Tom Minor are all members of the St.Louis Philatelic Exhibitors Group.

## Upcoming Bourses



Coming in September 12 & 13: our very own **Greater St.Louis Stamp Club Annual StampFest**, at the Crestwood Center, see back page. Regency Stamps will have its fall auction at the Center! Handy do-it-yourself advertising poster on the back page.

## Quiz / Philatelic Terms

- 1.What are Europa stamps?
2. When were they first issued, and by whom?

Europa stamps are an annual joint issue (of stamps) by countries in Europe, celebrating economic cooperation (and unity) among the issuers. Beginning with the six countries of the European Common Market in 1956, it has gradually expanded to most all of Europe, including this year, Ukraine.

The initial issue used a common design with each country changing only the name, denomination, etc. That didn't last long. Now subjects are picked (such as "Old Post Offices") and each country designs it's own set. The only element truly in common is the Europa logo.

## The Perf Dispatch Vol.4, No.7

Published by the Greater St.Louis Stamp Club

### Club Officers

President . . . . . (849-5402) David Something  
Vice President . . . . . (994-1243) Alan Barasch  
Treasurer . . . . . (576-5261) Gary Hendren  
Secretary & Editor . . . . . (645-4451) Tom A. Minor

Contents co. 1998 T.Minor/GSLSC

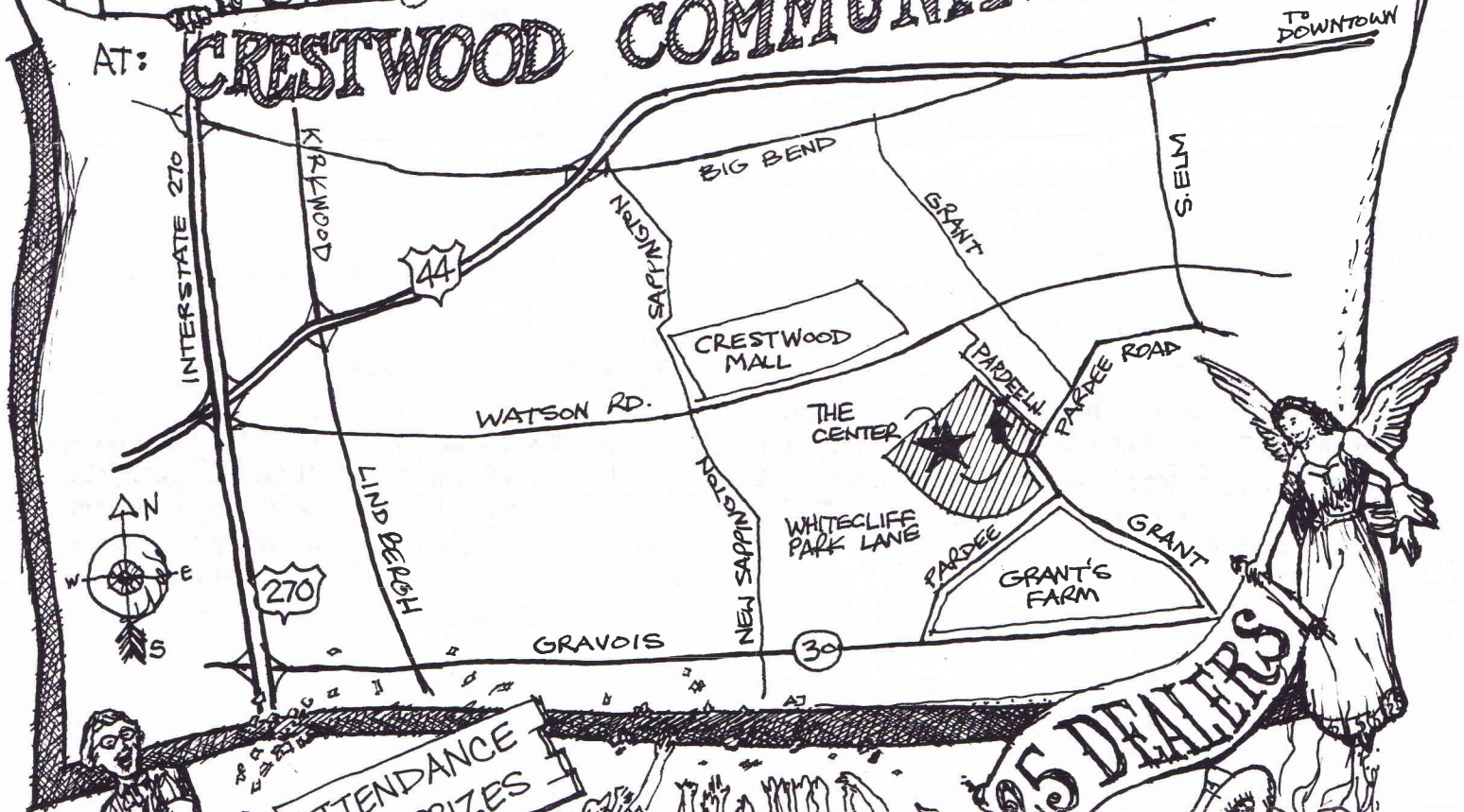


Greater St. Louis Stamp Club PRESENTS:

# FALL STAMPFEST

SEPT. 12-13

AT: CRESTWOOD COMMUNITY CENTER



OPEN: 10-5 SATURDAY, 10-4 SUNDAY



# The Perf-Dispatch

Newsletter of the Greatest St. Louis Stamp Club

September 9

## Meeting: Monday, September 28

The monthly meeting will be Monday evening at Parkway Central High School.

### Juniors Meeting at 6:30

The Juniors will have a scavenger hunt (for material from Gary's Treasure Chest.)

### Adult meeting:

8:00 PM: For this month, our program will be *A Guide To Disposing of a Stamp Collection*: as discussed at the Breakfast Club.

Debriefing: We'll also discuss the recent Stampfest and how things went.

### Gary's Breakfast Club: October 12

The next Breakfast Club meeting: show & tell. October 12, 1998 at LePeep Restaurant Hwy 141 & Olive (just west of Dierbergs) at 8:30 am.

### Congratulations

To Gary Hendren, elected Vice President (for 2 years) of the national Precancel Society. But that's not enough for G.H.: he and some other collectors are starting a Missouri Postal History Society. Anyone interested in Missouri covers, cancels, etc. should get involved now.

### Note of Thanks from the GSLSC

Special thanks to First Lady Mrs. Debbie Bueker for her long hours of work making the snack bar & picnic a popular success. She even got Prez. Dave to show up & cook excellent BBQ on Saturday. Those who didn't come to the picnic on Saturday evening missed a delicious meal in beautiful weather.

## Upcoming BOURSES



September 27 and October 11 Fenton Stamp Show Sunday 10 to 4:30 Stratford Inn at I44 & Bowles Ave Exit.



October 10-11 **Memphex** Saturday 10 to 6, Sunday 10 to 4 Holiday Inn Mt. Moriah at I-240, Memphis TN; Auction Sat. Evening.



October 16-18 **Midaphil** Fri-Sun.; Kansas City; I-435 and Frontage Road K.C. Market Center. The fledgling MO Postal History Group will meet.



October 24-25 **Star Stamps**; St. Charles, MO; old McKinley School Mall, 1701 N. 2nd at Howard; Saturday 10 to 5, Sunday 10 to 4



October 25, Sunday 9 to 4; Springfield Phil. Society, Springfield Illinois Ramada Inn South Plaza, 6th & Stevenson Drive.

### Letter of Thanks from the APS

(received in July 1998)

Dear Mr. Hendren:

Many thanks to all the members of the Greater St. Louis Stamp Club for your help in making packets for youth. The efforts are most appreciated and will save us valuable time that can be used to promote the hobby. We hope that you had fun making up the packets and would be happy to provide any needed materials if your club decides to do this again in the future.

Once again, thank you very much for your help.

Sincerely, Ken Martin, Youth Coordinator



# Senior receives stamp of approval

Cedar Hill man shares the love of his hobby with children

By Tracey Bruce  
Staff writer

Kenneth Lucas gets a little misty-eyed when he reminisces about sharing his hobby with children for the past 50 years.

But don't get the idea that Lucas spends all his time dwelling on the past. At 71, he continues to be as active as ever, and he still glows when he gives a child an envelope of stamps.

The Cedar Hill resident had been collecting stamps for about 10 years in 1948, when he agreed to volunteer with the Greater St. Louis Stamp Club's chapter at St. Joseph's Home for Boys in St. Louis.

That was the beginning of a mission for Lucas.

"I want to interest as many children in philately (stamp collecting) as possible," he said.

In all likelihood, he's influenced thousands.

Lucas worked for 40 years at the boys' home, and in 1989, he brought his hobby to the Northwest R-1 School District, where he introduces more than 200 children to the hobby each year.

It was the brainchild of both and Cheri Quick, who was postmaster of the Dittmer post office.

The two visited schools throughout the St. Louis area, and started clubs in local schools.

**"I think the best thing is the way the majority of children have turned out."**

**Kenneth Lucas**  
Stamp collector

Last year, Lucas led five classes of fifth graders at House Springs Elementary School and four classes of fourth graders at Maple Grove Accelerated School.

During the meetings, students learn history and geography by working with stamps, Lucas said. He provides stamps for the children and even prepares packets they can get at their local post office.

"People send him stamps from all over," said Mary Ann Sandstedt, his sister. "He prepares about 5,000 packets every year with 25 stamps in each one."

"One girl told her grandfather she wanted to get some free stamps from the post office," Lucas said, "but he said the post office didn't give anything away for free. Then she went in and picked up her free packet of stamps. He couldn't believe it."

Every summer, Lucas and Sandstedt host a stamp bash for the children where

they play games, earn funny money and bid on stamps, posters and all kinds of postal paraphernalia.

"Working with children is the secret to staying young," Lucas said.

This year though, the event celebrated Lucas' 50 years of working with children.

"We wanted to show our appreciation for sharing his hobby with the children," said Sherry Porter, the new postmaster in Dittmer.

Looking back, Lucas said his work has afforded him great rewards.

"I think the best thing is the way the majority of children have turned out," he said.

He said still hears from one of the students he worked with back in 1948 and a handful of others throughout the years.

"Some of the kids I've worked with still collect stamps," Lucas said. "Sometimes they put it aside in high school, but eventually some of them go back to it."

He said he wished more seniors would get involved in the program.

"They don't know what they're missing," Lucas said.

As for Lucas, he can't get enough.

"I'm thankful I was able to do it for 50 years," he said. "I hope to do it another 50."

## Congratulations to Ken Lucas

Every active collector in St. Louis knows Ken Lucas has worked long in promoting children's collecting, but probably doesn't know how much, and for how long. This article appeared in the Meramec Journal of August 19.

## The Perf Dispatch Vol.4, No.8

Published by the Greater St. Louis Stamp Club

### Club Officers

President	(849-5402) David Bueker
Vice President . . . . .	(994-1243) Alan Barasch
Treasurer . . . . .	(576-5261) Gary Hendren
Secretary & Editor . . . . .	(645-4451) Tom A. Minor

Contents co 1998 T.Minor/GSLSC



# The Perf-Dispatch

Newsletter of the Greater St. Louis Stamp Club

October 9

## Meeting: Monday, October 26

The monthly meeting will be Monday evening at Parkway Central High School.

### Juniors Meeting at 6:30

The Juniors should bring their albums to work on coils and "back of the book".

### Adult meeting:

8:00 PM: For this month, our program will be a show on *Number 1's of the World*. This will not include anything on baseball records, just stamps, but should be interesting anyway. If you can't afford the first stamp issued by every country, come see them instead!!

## Gary's Breakfast Club: November 12

The next Breakfast Club meeting: show & tell. November 12, 1998 at LePeep Restaurant Hwy 141 & Olive (just west of Dierbergs) at 8:30 am.

## November Meeting

November has become our traditional Auction Bucks Meeting (if the weather gods cooperate). We need donations of items for auctioning- if you give something, you'll get auction bucks. So bring items this month, or if you can't make it, call and get them to any of the officers before Nov. 22.

## XMAS Party

The annual Christmas Party is being scheduled for the second Monday in December, 13th, '98. A location is not settled, yet.

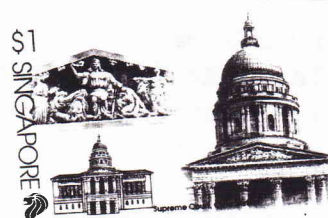
## Upcoming BOURSES



November 8? Fenton Stamp Show Sunday 10 to 4:30 Stratford Inn at I44 & Bowles Ave Exit.



October 24-25 **Star Stamps**; St. Charles, MO; old McKinley School Mall, 1701 N. 2nd at Howard; Saturday 10 to 5, Sunday 10 to 4. If you didn't just go, you missed it.



## Philatelic Terms for Beginners

### Disturbed Gum

"Disturbed Gum" in an advertisement for a classic stamp, is a vaguer term than "lightly hinged". It probably means there is a large area with partial gum.

Gum can be disturbed by stamps hinges, licking, humidity in the air, mold, chemicals, touching with fingers (which have natural moisture), or by being scratched, cracking & flaking off (as the stamp ages and changes size with humidity). If the stamps is very expensive, the boundary between mint and not-mint can mean big money.

Recently there were a number of letters in The American Philatelist etc., concerning "brown goo" sold so that anyone can try the fun of regumming: putting new gum which looks authentic on that old stamp (raising the value by mucho \$). Perhaps one is better off with a stamp which shows disturbed gum, than a pristine stamp. This implies that it has been sitting in an old album for a long time, and has its original stickum.



## A Listing of Stamp Hobby Societies

Believe it or not, GSLSC is not the stamp club to end all clubs. There are plenty of specialty clubs to join, most of whom operate in about the same way: Your main benefit is a newsletter/magazine put out several times a year by some insanely-hard-working enthusiast-editor (such as myself). All clubs use the newsletter for informational articles and news of people, meetings, etc., but many also have sales and auctions of member material, want ads, and experts who will answer mailed questions.

### 1. (APS) American Philatelic Society

This is the big one: 50,000+members, headquarters and library, insurance, beautiful monthly magazine. You should already belong.

### 2. (AFDCS) American First Day Cover Society

has a journal 8 times a year: *First Days*, and also puts out information booklets. Their national convention/expo was held in St.Louis in 1996. Doug Kelsey, Box 65960, Tucson, AZ

### 3. (AAPE) American Association of Philatelic Exhibitors.

Founded 1986, for experienced, and for "display" exhibit makers also. Quarterly journal: *The Philatelic Exhibitor*. Mail in service: a judge critiques your exhibit.

Russell Skavarti, 222 E.Torrence Road, Columbus, OH 43214.

### 4. (AAMS) American Air Mail Society

Monthly magazine: *The Airpost Journal*. Dan Barber, Box 23055, Lansing, MI 48909

### 5. (ATA) American Topical Association

This is another big one, with 6000+ members, insurance, bi-monthly magazine *Topical Time*, and many specialist booklets for sale(200 or so).ATA, P.O.Box 50820, Albuquerque, NM 87181-8020

### 6. American Philatelic Congress

This club exists only to support serious philatelic/historic research, and print an annual book of research articles. GSLSC has a few issues.

### 7. (JPA) Junior Philatelists of America

Adults pay \$15 or more to support the national stamp club for kids, Elle Chapman JPA, Box 850, Boalsburg, PA 16827

### 8. Machine Cancel Society

Exists for the study of cancellations on US covers. Quarterly issues of *Machine Cancel Forum* for \$15 dues. Auctions and extra bonus publications. Art Hadley, 3407 N. 925 E, Hope, IN 47246-9717

### 9. Postal History Society & Modern Postal History Society

Two different clubs cover 19th century and 20th century US postal history. (What will they do after 2001?) About \$10 annual for each.

MPHS: Bill Di Paolo, 404 Dorado Court, High Point, NC 27265

PHS: K Illyefavi, 207 Darien Court, Pikesville, MD 21280

### 10. (PNC3) Plate Number Coil Collectors Club

For those who collect coil stamps with the itty-bitty numbers. Monthly newsletter.

Joann Lenz, 37211 Alper Drive, Sterling Heights, MI 48312.

### 12. Bureau Issues Society

Concentrating on those stamps printed by the U.S. government at the Bureau of Engraving & Printing.

### 13. U.S. Philatelic Classics Society

A nice quarterly: *The Chronicle of U.S. Classic Postal Issues*. \$22/year.

Patricia S.Walker, Briarwood, Lisbon, MD 21765.

## The Perf Dispatch Vol.4, No.8

Published by the Greater St.Louis Stamp Club

### Club Officers

President	(849-5402) David Bueker
Vice President . . . . .	(994-1243) Alan Barasch
Treasurer . . . . .	(576-5261) Gary Hendren
Secretary & Editor . . . . .	(645-4451) Tom A. Minor

Contents co 1998 T.Minor/GSLSC



# The Perf-Dispatch

Official Newsletter of the Greater St. Louis Stamp Club

November/December 98

## Meeting: Monday, November 23, 98

The monthly meeting will be Monday evening at Parkway Central High School.

**Juniors Meeting will be at 6:30**

## Adults Meeting

Will be at 8:00 PM. Our program will be the fourth annual "Auction Bucks" sale. Lots will be set out for viewing early before the meeting, see the enclosed auction list.

Due to the size of some of the lots (binders, etc.), we may shift meeting rooms--watch for a sign.

## Christmas Party: December 14

The December meeting will be our annual Christmas party, December 14, 1998. We will be taking reservations and money for the party at the November meeting, but you may also mail in (see the back page.)

## Auction Bucks Sale 1998

1. Members must bring their auction bucks (no credit) and pay off each sale item as it is bid, so as to avoid questions of overspending.
2. Sale items will include some US stamps and foreign stamp lots, many books, and a few non-philatelic goodies.
3. Leftover bucks from previous years will be usable at one half their original value. If you have some, please come early enough to exchange a correct amount of new stuff with Hollis.
4. Thanks to all those who donated something for the BUX Auction. Members who donate items will get some auction bucks reward. Please call any of the officers if you have something, and bring it along Monday.

## Upcoming Bourse:



December 13 St. Louis, MO; Stratford Inn at I44 & Bowles Ave. exit, South Outer Road 10 to 4:30.

## Gary's Breakfast Club: January 11, 98

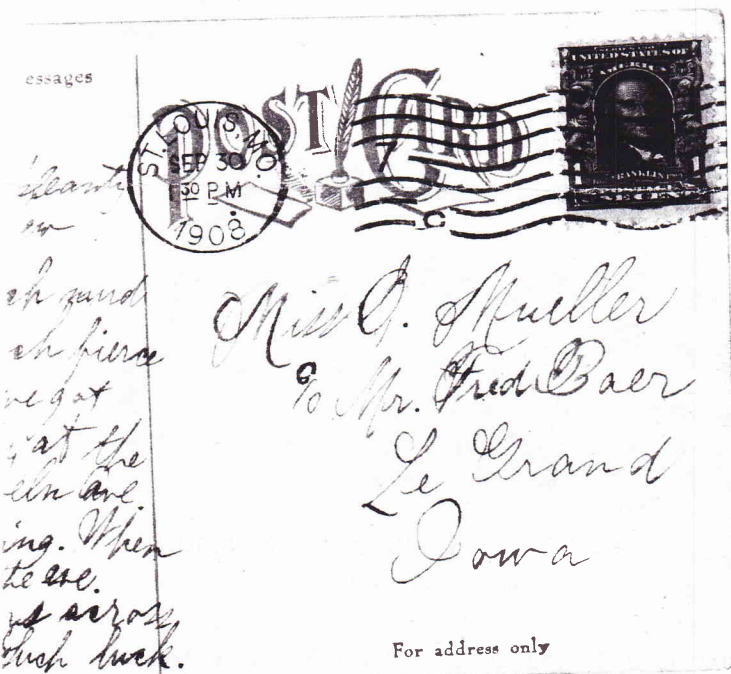
There will be no December meeting. January will return to the usual time and place: 8:30 AM Breakfast at Le Peep, Hiway 141 & Olive (just west of the Dierbergs)

## The Perf Dispatch Vol.4, No.10

Published by the Greater St. Louis Stamp Club  
Club Officers

President . . . . .	(849- 5402)David Bueker
Treasurer . . . . .	576-5261)Gary Hendren
Secretary & Editor . . . . .	(645-4451)Tom A. Minor
Vice President . . . . .	Alan Barasch

Contents co. 1998 T.Minor/GSLSC



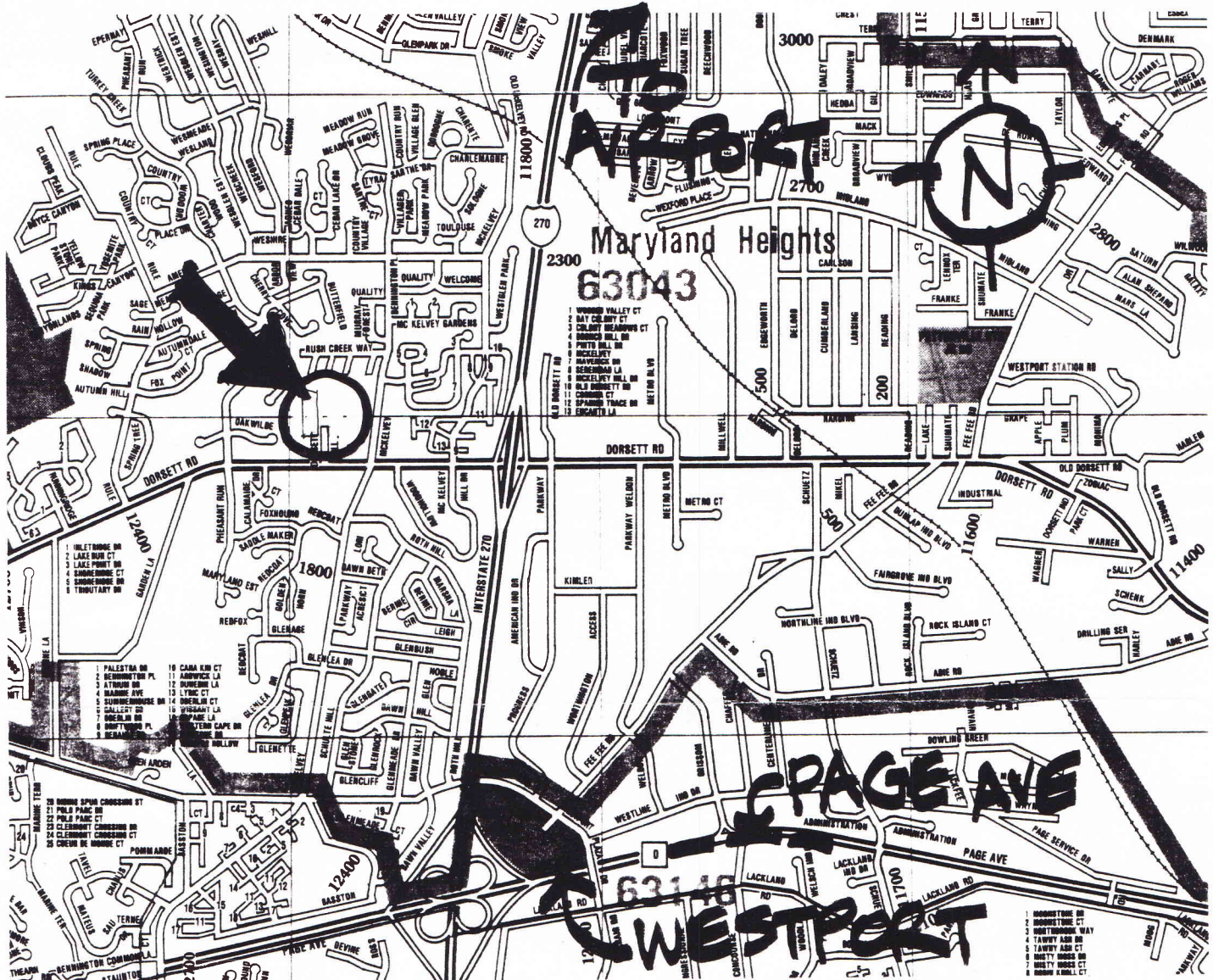


# XMAS PARTY

You are cordially invited to the Greater St. Louis Stamp Club Annual Christmas Party on December 14th at Orlando Gardens Way Out NWest.

The hall will be open to us for four hours, from 6:00 to 10:00 PM, with buffet dinner at 7:30. The dinner menu will be similar to last years, with two Entrees, Vegetable and appetizers, Salad bread, dessert, and open bar, so all drinks are included.

Please come help us celebrate the official end of another GSLSC year.



## Directions to Orlando Gardens

Orlando Gardens is in Dorsett Village/Schnucks Shopping Center. Driving North on I-270, exit at Dorsett, turn West (left) on Dorsett. Go through the stop light at McKelvey Road. Turn right at the next light, (there's a big Schnucks sign). Drive *into* the shopping center, past "Schnucks" and "Golf House" to the "Orlando Gardens" door under a red awning.