

2000-02-perf-dispatch	2
2000-03-perf-dispatch	4
2000-04-perf-dispatch	6
2000-05-perf-dispatch	8
2000-06-07-perf-dispatch	10
2000-08-perf-dispatch	12
2000-09-perf-dispatch	14
2000-10-perf-dispatch	16
2000-11-12-perf-dispatch	18



Greater Saint Louis Stamp Club

Perf d i s p a t c h

Volume VI, Number 2



February 2000

Who Greater St Louis Stamp Club
Where Parkway Central High School
When 4th Monday each month at 8PM

Adult Meeting

David Straight, former president of the GSLSC and a professional librarian, will present our program. David will talk about collecting philatelic literature.

Breakfast Club

The Breakfast group meets the 2nd Monday of the month. The next meeting will be Monday, March 13th. The Breakfast Club meets at LePeep Restaurant at Hwy 141 & Olive Street Road (just west of Dierberg's) at 8:30 AM.

Junior Club

The Junior club meets immediately before the Adult club beginning at 7:00 PM at Parkway Central High School.

2000 Schedule

February 28 A Book Talk
March 27 The Wackiest

Library News

The next meeting of the Library is Saturday, March 11th. We plan to have circuit books at this meeting.

The Library is open the 2nd Saturday each month and other times by appointment. The library is located at **Kathy Sander's** office at 1161 Research Blvd in Olivette.

Letters to all donors to the club or library went in the mail with last month's newsletter.

Stamp Expo

March 3-5, **Saint Louis Stamp Expo**, Henry VIIIth Hotel, 4690 No. Lindbergh. Friday & Saturday hours are 10 to 6 and Sunday 10 to 4.

Most committees still need volunteers.

Dues Time!

It is that time of the year again. Bring your dues of \$5 to the next meeting or send to: Gary Hendren, 12737 Glenage, Maryland Heights, MO 63043. You must get your dues in before March 1st to be eligible for the Auction Bux reward.

The Wackiest

The program in March is called the "Wackiest" as the premise is to find the craziest philatelic items around.

Begin gathering your largest cover, largest stamp, smallest stamps and covers. How about the strangest destination, the wackiest subject of a stamp, the most lurid colors, and the nuttiest shape stamps?

Prizes will be awarded in each category. A complete list of categories will be in the next "Dispatch."

Officers

President..... Alan Barasch (994-1243)
Vice-President..... Tom Minor (645-4451)
Treasurer Gary Hendren (576-5261)
Secretary..... Kathy Sanders ()
Buxs Banker..... Roger Grider

© 2000

Greater St. Louis Stamp Club

MEMBERSHIP MATERIAL AUCTION.

AUCTION DATE 2-28-00

COUNTRY	SCOTT NO	CAT VALUE	DESCRIPTION	MIN BID	OWNERS NO
ARGENTINA	1456	4.50	MNH	1.00	198
		RETRAK	U.S. SUPPLEMENTS SCOTT NATIONAL NEVER USED 1971, 76, 81, 82, 86+87	2.00	198 2.00
ISRAEL	1025	6.50	MNH, DUCKS WITH TABS	1.00	198 1.10
		?	SCOTT NATIONAL BINDER W/REVENUE PAGES	5.00	198 1.15
		?	SCOTT NATIONAL BINDER W/POSTAL STATIONERY PGS	5.00	198 1.15
USA	285	6.00	USED, VF	2.00	272
USA	286	1.50	USED, VF	.50	272
USA	614	3.25	USED, F-VF	1.00	272 1.00
USA	615	2.10	USED, F-VF	.70	272 1.00
USA	620	3.00	USED, VF	1.00	272 1.10
USA	2438	4.00	MNH, VF	2.00	23T 2.00
USA	2624/29	27.40	MNH (16.34 FACE)	17.00	23T 18.50
USA	2837	2.50	MNH (1.19 FACE)	1.25	23T 2.00
USA	C-126	4.25	MNH, VF	2.00	23T
USA	295	18.00	MNH, F-VF	5.50	272
USA	2171	3.00	MNH BLK 20, LL PL # 2	.80	23T .85
		?	22 STOCK PAGES	1.00	LIBRARY 3.00
		—	31 MANILA 5"X8" STOCK CARDS	.60	LIBRARY 1.60
		—	BINDER W/23 MANILA STOCK PAGES	1.00	LIBRARY 2.75
		—	5-22 RING, 8 ROW CLEAR ON BLK PAGES	1.00	LIBRARY 1.60
		—	2 REAMS 8 1/2 X 11 SALES SHTS, 25 STAMPS/SH	2.00	LIBRARY 5.00
USA	438	4.00	USED, F-VF	1.25	CLUB 1.25
USA	475	10.50	USED, FINE	2.75	CLUB 2.75
USA	474	5.00	USED, FINE, SM DAMAGE SPOT	1.60	CLUB 1.60
USA	472	1.25	USED, FINE	0.40	CLUB 1.40
USA	470	5.50	USED, FINE	1.80	CLUB
USA	?	—	SET OF 2 COVERS - 1 POSTED 12-31-99	1.50	306 2.00
USA	?	—	AND OTHER 1-1-2000 - CACHETED	1.50	306 2.90
		6.35	1971 POST OFFICE ISSUE MINI-ALBUM	2.00	321 2.00
		P.O. PRICE 6.50	1982 PO COMMEM MINT SET (ONLY 1 BIRD AS ISSUED)	6.25	321
		10.95	1976 PO MINT SET (2.73 FACE)	3.00	321
USA	117	130.00	USED, PROMINENT GRILL, AVG	20.00	321
ITALY	B-18	22.50	MINT, FINE	5.00	321
	CATALOG	—	SCOTT 6 TH ED (1919) IMPERIAL ALBUM W/STAMPS	35.00	303



Greater Saint Louis Stamp Club

P e r f d i s p a t c h

Volume VI, Number 3



March 2000

Who Greater St Louis Stamp Club

Where Parkway Central High School

When 4th Monday each month at 8PM

Adult Meeting

A group activity! Bring in your Wackiest as described elsewhere in this journal.

Breakfast Club

The Breakfast group meets the 2nd Monday of the month. The next meeting will be Monday, April 10th. The Breakfast Club meets at LePeep Restaurant at 8:30 AM.

Junior Club

The Junior club meets immediately before the Adult club beginning at 6:45 PM at Parkway Central High School. Note change in starting time. It has been conflicting with Adult meeting.

2000 Schedule

March 27 The Wackiest
June 26 London2000 show report

Library News

The next meeting of the Library is Saturday, April 8th. We will have circuit books at this meeting.

The Library is open the 2nd Saturday each month. The library is located at **Kathy Sander's** office at 1161 Research Blvd in Olivette.

Expo Report

Several of our members won exhibiting awards at Expo, including **David Straight** – One frame Platinum and **Alan Barasch** – One frame Silver.

The Wackiest

The program in March is called the "Wackiest" as the premise is to find the craziest philatelic items around. Auction Bux will be awarded in each category.

Categories:

Weirdest Shape Cover	Weirdest Shape Stamp
Most Markings	Strangest Destination
Ugliest Stamp	Largest Stamp or Cover
Worst Cancel	Smallest Stamp or Cover
Weirdest Town Name	Funniest Shape
Most stamps on a Cover	Strangest reason for a stamp

Your officers probably did not think of all the wacky categories, so if you think of something else, bring it around.

Participation.....	10 Bux
Category Winner.....	25 Bux
Most Categories	100 Bux

Final Notice!

Bring your dues of \$5 to the next meeting or send to: Gary Hendren, 12737 Glenage, Maryland Heights, MO 63043. You must have gotten your dues in before March 1st to be eligible for the Auction Bux reward.

Officers

President	Alan Barasch (994-1243)
Vice-President	Tom Minor (645-4451)
Treasurer	Gary Hendren (576-5261)
Secretary	Kathy Sanders (872-0200)
Buxs Banker	Roger Grider

© 2000

Greater St. Louis Stamp Club

MEMBERSHIP MATERIAL AUCTION.

AUCTION DATE 3-27-00

COUNTRY	SCOTT NO	CAT VALUE	DESCRIPTION	MIN BID	OWNERS NO
UK			10 MINT (ALL DIFF COMM) NH	1.00	306
UK			25 USED (DIFF OFF PAPER)	.90	306
UK			25 USED ON PAPER (ALL COMMON)	.75	306
ST KITTS/NEVIS	200/222	19.55	MINT, NH	4.00	198
LESOTHO	321/332	8.22	MINT, NH - ON DISPLAY BOARD	1.00	198
AITUTAKI	82/94	13.17	MINT, NH - ON DISPLAY BOARD	1.00	198
			BINDER 132 MANILA STOCK CARDS	1.30	LIBRARY
			75 5x8 MANILA STOCK CARDS	1.50	LIBRARY
			75 5x8 MANILA STOCK CARDS	1.50	LIBRARY
			75 5x8 MANILA STOCK CARDS	1.50	LIBRARY
USA	621	10.50	USED, F-VF	3.50	272
USA	2419	9.00	MOON LANDING, FDC - VF	2.50	23T
USA	2438	4.00	S/S MNH, VF	2.00	23T
USA	2624/29	27.40	COLUMBUS S/S MNH, FACE 16.34	17.00	23T
USA	2837	2.50	WORLD CUP S/S MNH, FACE 1.19	1.25	23T
USA	2-126	4.25	20TH UPU CONGRESS S/S MNH	2.00	23T
USA	400	5.00	USED, F-VF	5.00	272
		5.50	PAGE SHOWING MOUNTS #25 (UNOPENED)	2.75	272
		6.25	" " " #82 (UNOPENED)	3.00	272
ITALY	633	12.50	MINT, NH	4.00	272
USA	483	8.00	USED, F	2.75	CLUB
USA	237	4.50	USED, AUG	1.50	CLUB
USA	247	2.75	USED, F-VF	.90	CLUB
USA	519	2.15	USED, AUG	.05	CLUB
USA	E-6	2.75	USED, FINE	.90	CLUB
USA	2286/2335	47.50	MNH - FULL PAGE PR# 11111	13.00	321
USA		8.55	1972 PO MINI-ALBUM MNH (20 PAGES)	2.50	321
USA	1952/2002	37.50	1982 EAGLES & FLOWERS MNH PAGE PR# 11111	12.00	321
USA		11.00	1977 PO SOUVENIR MINT SET (5.51 FACE)	4.00	321
USA		14.20	1980 PO SOUVENIR MINT SET (4.51 FACE)	4.60	321
PR. SOLOMON IS.	149a-166a	24.37	MINT, F-VF	6.00	254
NEW GUINEA	C-24	8.00	MINT, VF	2.00	254
NEW ZEALAND	160	10.00	MINT, F-VF	2.50	254
ITALY	304	13.00	USED, VF	3.00	254
MALTA	17	27.50	MINT, VF	7.00	254
			ALBUM	4.00	



Greater Saint Louis Stamp Club

per f d i s p a t c h

Volume VI, Number 4



April 2000

Who Greater St Louis Stamp Club

Where Parkway Central High School

When 4th Monday each month at 8PM

Adult Meeting

The meeting convening at 8:00 PM on Monday, April 24th includes the program "Basics of Exhibiting" presented by **David Straight** and **Alan Barasch**.

Selections from their exhibits will be shown and discussions will lead into involvement with the Greater St. Louis StampFest in September. It is not too early to begin preparations for the show.

Breakfast Club

The Breakfast group meets the 2nd Monday of the month. The next meeting will be Monday, May 8th. The Breakfast Club meets at LePeep Restaurant at 8:30 AM.

Junior Club

The Junior club meets immediately before the Adult club beginning at 6:45 PM at Parkway Central High School. Note change in starting time. It has been conflicting with Adult meeting.

2000 Schedule

April 24..... Basics of Exhibiting
May 22..... Pioneer Stamps of British Empire
June 26..... London2000 show report
July No Meeting
August.....

Library News

The next meeting of the Library is Saturday, May 13th. We will have circuit books at this meeting.

The Library is open the 2nd Saturday each month. The library is located at **Kathy Sander's** office at 1161 Research Blvd in Olivette.

The Wackiest

The program in March really was the Wackiest. In case you missed it, it went something like this:

1. At 4:30 in the afternoon Gary discovered that the high school was closed for Spring Break. Now that he does not teach, he has lost touch.
2. Alan got home from work about the same time and they conferred on a course of action.
3. We chatted about places to have a meeting and starting calling around. Several choices were already closed for the day.
4. Decided on "Steak 'n Shake". Split phone list and began calling regulars.
5. Arrival at "Steak 'n Shake". We commandeered 5 tables in the back for the meeting.
6. We ran through the list of Wackies and made up a few new ones along the way:

Some of the Wackiest included a piece that was covered both sides with a full sheet of postage dues on each side; there was what could be argued is the smallest possible cover; what *I* think is the world's most

beautiful stamp (1960 Philippines issue for World Refugee Year); a cover that had been re-addressed so many times one could lose track of where it was headed next.

There were the largest and smallest stamps; the ugliest (my ugly is your beauty); we had the most unusual substance to make a cover from (wood); strangest shape for a stamp (the phonograph record stamps of Bhutan) and the strangest shapes (map stamps and accompanying souvenir sheets from Norfolk Island).

Considering the difficulties in getting the meeting off the ground, everyone had a great time and everyone participated. The awards were carefully noted and Buxs will be presented at the April meeting.

We did NOT hold the auction due to limitations on space but the program went over very well. The club bought a round of drinks (sodas and malteds) and we had lots of fun.

The Auction sheet that accompanied last month's newsletter carries over to this month.

Second Day of Issue

The St. Louis Public Library invites you to help them celebrate the 200th Anniversary of the Library of Congress with a Second Day of Issue Party, Tuesday, April 25th at 10AM. The ceremony is on the front steps of the Central Library, 1301 Olive Street, downtown. Call 539-0305 for more information.

Established by an act of Congress on April 24, 1800, the Library of Congress will mark its bicentennial with a national celebration of all libraries. The bicentennial goal of the world's largest library is "to inspire creativity in the century ahead by stimulating greater use of the Library of Congress and libraries everywhere."

The Postal Service is joining in the celebration with the issuance of this commemorative stamp, which features a 1980 photograph by Michael Freeman of the interior dome and several of the arched windows in the Main Reading Room in the Thomas Jefferson Building. A photograph of the exterior of the Thomas Jefferson Building was used on the selvage.

Library

The library meeting in April was called off when Kathy had to leave town on short notice. We apologize to anyone we missed in the phone calls.

Shows

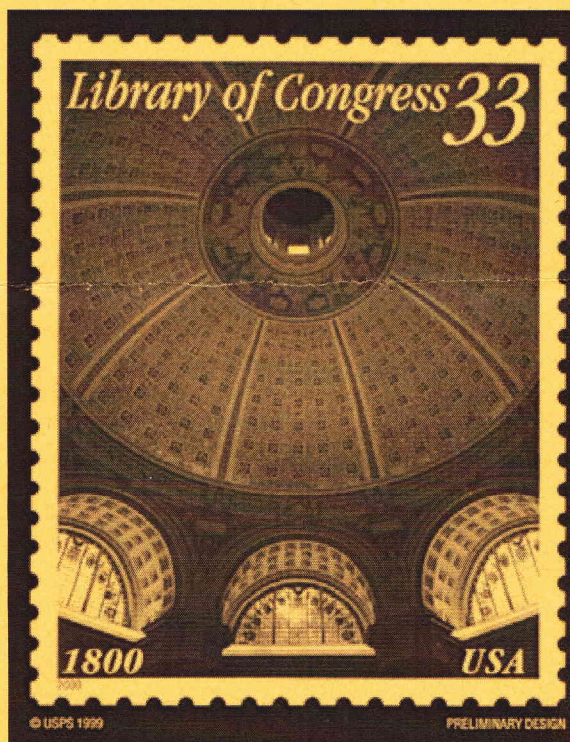
Support your local shows. Look for inserts with this month's newsletter.

Officers

President Alan Barasch (994-1243)
Vice-President Tom Minor (645-4451)
Treasurer Gary Hendren (576-5261)
Secretary Kathy Sanders (872-0200)
Buxs Banker Roger Grider

© 2000

Greater St. Louis Stamp Club



The Perf-Dispatch

Deja Vu Newsletter of the Greater St.Louis Stamp Club

May 2000

Meeting: Monday, May 22, 2000

The monthly meeting will be Monday evening at Parkway Central High School.

Adult meeting at 8:00

"Pioneer Stamps of the British Empire" is this month's program, given by member Paul Miles.

Juniors Meeting will be at 6:45

May is exhibit show month. Judges (as discussed with Gary), please be there by 6:45.

Breakfast Club: June 12

Breakfast group will meet second Monday in June at LePeep Restaurant at Hwy 141 & Olive (just west of Dierbergs) at 8:30 am.

Library News

The Library is open the second Saturday each month. The next meeting is tentatively Saturday June 10th.

The library is located in Kathy Sander's office at 1161 Research Blvd in Olivette.

The Perf-Dispatch Vol.6, No.5

Published by the Greater St.Louis Stamp Club
Club Officers:

President (994-1243) Alan Barasch
Treasurer (576-5261) Gary Hendren
Vice President (991-4827) Kathy Sanders
Secretary & Editor (645-4451) Tom A. Minor
Banker Roger Grider

Contents co. 2000 TM/GSLSC

Memoriam

GSLSC has recently lost two faithful members; Ralph Persels, Jr., passed away in April, and Jerry (Jerome Edward) Walterscheid on May 6.

Ralph Persels, Jr, member #280, was an active collector of modern US issues and always a dependable volunteer and supporter of the club. He is survived by one sister.

Jerry Walterscheid, member #262, was a part time dealer, one time club president, and collector of several areas, including plate no. singles.

Jerry was an SLU High School graduate, and a Scholarship Fund has been started in his name. He is survived by wife Katie, three daughters and their families.

Both Jerry and Ralph were consistent attendees at GSLSC meetings, familiar faces to everyone, experienced collectors who were always outspoken and entertaining company, and will be sorely missed.

Upcoming:



June 9-10, **Precancel Mulefest** . Maryland Hts. Community Ctr. 2344 McKelvey Rd; 9am-10pm Fri., 8-4 Sat.



June 10 , **Fenton MO.** Stamp show: Stratford Inn at 144 & Bowles Ave. exit, South Outer Road The monthly bourse, 10 to 4:30.



June 10-11, **Regency Auction** St. Louis, MO.



May 26-28, **COMPEX 2000**; Forest View Education Ctr., 2121 S.Goebberd Rd., Chicago.

MEMBERSHIP MATERIAL AUCTION.

AUCTION DATE 5-22-00

COUNTRY	SCOTT NO	CAT VALUE	DESCRIPTION	MIN BID	OWNERS NO
DANISH WEST INDIES	J-1	10.00	1¢ UNUSED, HINGED	2.50	272
USA	3032	3.00	MNH BL 420 PB# 1112 (LR)	.40	272
USA	3033	3.00	MNH BL 420 PB# 1111 (LL)	.60	272
ITALY	633/783/788	13.50	MNH	4.50	272
		4.75	1 OPENED SCOTT MOUNT PARK (#61) 1 MISSING	2.50	272
		15.00	GROUP OF OPENED SLOW GARD STRIPS	8.00	23T
USA	615	12.50	USED, F	4.00	272
GREAT BRITAIN	180	22.50	USED, F	7.00	303
USA		9.10	1973 SOUVENIR MINT SET 2.74 FACE	3.05	321
		9.05	1975 USPS MINT SET 2.86 FACE	3.20	321
		13.25	1978 USPS MINT SET 3.72 FACE	4.10	321
		27.50	1981 COMM MINT SET 7.48 FACE	8.50	321
6 TIME/LIFE PRINTS	?		PRINT PORTFOLIO OF WW II PLANES	3.00	321
LIBERIA	91-942	18.13	COMPLETE MNH US PRESIDENT SERIES	5.00	254
ITALY	63	11.00	MINT, VF	2.50	254
BOOK ISLS	131-146	19.30	MINT, VF SLIGHT HINGE MK	5.00	254
JAPAN	293	25.00	MINT, VF	6.00	254
USA	628	6.50	MINT, VF	1.50	254
USA	507	1.10	USED, FINE	0.35	CLUB
USA	498	0.25	USED, FINE, CLAPED CORNER	0.10	CLUB
USA	492	0.25	USED, F-VF	0.10	CLUB
USA	490	0.25	USED, F	0.10	CLUB
USA	488	1.75	USED, F-VF AIRPLANE CANCEL	0.80	CLUB
	CATALOG	?	SCOTT 6TH ED 1919 IMPERIAL ALBUM W/ STAMPS	25.00	303
USA	330	27.50	USED	10.00	55
USA	253	8.00	USED	3.00	55
USA	RU-6	35.00	MINT - HINGE REMNANT MARK	10.00	55
USA	830	4.25	MINT - NO GUM	3.00	55
USA	2543	5.00	USED - VC CANCEL	2.25	55
USA	397	17.50	MINT, L HINGE	8.00	271
			SCOTT CAT #1 - 1999 ISSUE	5.00	271
USA	NOT AVAIL.	?	33¢ US SUB CACHET COVER / BOTH	.50	306
USA	NOT AVAIL.	?	33¢ US SUB CACHET COVER / DIFF 1ST DAY	.50	306
USA	1530-37		M, NOT HINGED, PL BLK OF 16+8 2.40 FACE	2.25	25
USA	1489-98		" PL BLK OF 20 1.60 FACE	1.50	25
USA	1434-5		" PL STRIP OF 20 (#33148) 1.60 FACE	1.50	25
USA	1193		" PL STRIP OF 25 (#27065) 1.00 FACE	0.90	25
USA	1091		" PL STRIP OF 10 (#25725) .30 FACE	0.25	25
USA	1078		" PL STRIP OF 10 (#25431) .30 FACE	0.25	23 M



Greater Saint Louis Stamp Club

perfidispatch

Volume VI, Number 5



June-July 2000

Who Greater St Louis Stamp Club
Where Parkway Central High School
When 4th Monday each month at 8PM

The Library is usually open the 2nd Saturday each month. The library is located at **Kathy Sander's** office at 1161 Research Blvd in Olivette.

Adult Meeting

Alan Barasch recently returned for his trip to the London2000 show. He has souvenir items picked up at the show and a few slides of the convention center.

We NEVER have a meeting in July. The school is closed.

Breakfast Club

The Breakfast group meets the 2nd Monday of the month. The next meeting will be Monday, July 10th. The Breakfast Club meets at LePeep Restaurant at 8:30 AM.

Junior Club

Gary will be contacting the junior members to set a meeting.

2000 Schedule

June 26London2000 show report
JulyNo Meeting
August.....Prep for StampFest
September 2-3StampFest
September 2 (evening)..... BBQ
SeptemberTBA
October.....TBA
November Auction Bux & Elections
DecemberHoliday Party

Library News

The next meeting of the Library is Saturday, AUGUST 12th. There will be NO meeting in July.

StampFest

The St. Louis Philatelic Exhibitors Group has expressed an interest in filling the frames at StampFest. Most members are also members of GSLSC. If you have thought about exhibiting, StampFest is a great venue for a test run of a new exhibit.

Volunteers for StampFest

People are needed to fill a lot of jobs around the show. Frames must be pulled from storage and setup at the community center. Dealers will need assistance loading and unloading. Tables must be set in place and labeled. We need help manning a registration table for the full run of the show. The junior area needs people to mentor our kids.

Annual BBQ

Our annual picnic BBQ is held at the Crestwood Community Center when the show closes for the day on Saturday. We will be circulating a list of food suggestions. As usual, the club will provide the meat.

Officers

President.....Alan Barasch (994-1243)
Vice-President.....Tom Minor (645-4451)
Treasurer Gary Hendren (576-5261)
Secretary Kathy Sanders (872-0200)
Buxs Banker Roger Grider

© 2000

Greater St. Louis Stamp Club

MEMBERSHIP MATERIAL AUCTION.

AUCTION DATE 6-26-00

COUNTRY	SCOTT NO	CAT VALUE	DESCRIPTION	MIN BID	OWNERS NO
USA	?	1.25(E)	334 SUB FIRST DAY-MEMBER CANCEL	.50	306
	C-33	2.00	FIRST DAY COVER - CANCEL	.75	306
	C-32	2.00	CACHED FIRST DAY COVER	.80	306
	C-12	11.00	M-H-F-VF	1.50	254
ITALY	C-83	10.00	M-F-VF	2.00	254
BELGIUM	133	8.50	M, VF	2.00	254
FRANCE	682	7.00	M, VF	2.00	254
ROMANIA	34	20.00	IMPERF, SM TEAR, LG MARGINS	2.50	254
USA	11 MAY 1870	?	PATRIOTIC COVER "THE CONSTITUTION AND THE UNION MUST BE PRESERVED"	20.00	CLUB
	26	5.00	USED, F-VF	2.00	CLUB
	159	15.00	USED, AVG, "APR 4 187?" CANCEL	6.00	CLUB
	184	0.25	USED, F-VF, STAR IN CIRCLE CANCEL	0.10	CLUB
	188	22.50	USED, AVG ? FANCY CANCEL	6.00	CLUB
	E-13	0.90	USED, VF	0.30	CLUB
	E-15	0.15	USED, F-VF GRAY LILAC	0.10	CLUB
	#115	160.00	USED, AVG	45.00	321
	216	200.00	USED, MINT, NG, ST. EDGE	50.00	321
	619	12.50	USED, F-VF	3.00	321
	C-28	2.75	MINT, NH, SM GUM DISBURANCES	1.10	321
	C-76	6.00	FIRST DAY COVER	2.00	321
	285	6.00	TRANS-MISS USED	2.00	272
	286	1.50	USED	.50	272
	295	18.00	VF, M NH	3.50	272
	657	.70	M, H	.25	23T
	681	.70	M, H	.25	23T
	2171	1.50	PB OF 4 + 16 SINGLES	.80	23T
	2637/41	5.50	PB OF 10	2.90	272
	3033	1.00	PB OF 4 + 16 SINGLES	.60	23T
		1.00+	METAL PERF GAUGE	.50	23T
DANISH W INDIES	J-1	10.00	M, H	2.50	272
CANADA	51	8.00	USED, F-VF	2.75	25
	52	12.50	USED, F	4.00	25
	53	2.00	USED, F VERT CREASE, PULLED PERF	.50	25
	85	5.50	USED, F-VF	1.75	25
	143	3.75	USED, F-VF	1.25	25
	C-3	3.25	USED, AVG	1.00	25
	E-7	2.75	USED, F	1.00	236
USA	RW-1	125.00	USED, HORIZONTAL CREASE	25.00	236
		1.00		5.00	231



Greater Saint Louis Stamp Club

perfdispatch

Volume VI, Number 6



August 2000

Where Parkway Central High School

When 4th Monday each month at 8PM

Adult Meeting

The primary focus of the August meeting will be preparation for StampFest 2000.

Breakfast Club

The Breakfast group meets the 2nd Monday of the month. The next meeting will be Monday, September 11th. The Breakfast Club meets at LePeep Restaurant at 8:30 AM.

Junior Club

Gary will be contacting the junior members to set a meeting.

2000 Schedule

August Prep for StampFest
September 2-3 StampFest
September 2 (evening) BBQ
September TBA
October TBA
November Auction Bux & Elections
December Holiday Party

Library News

The library WILL BE CLOSED in September. We need to also discuss which Saturday the club and Kathy are available each month for the library to be open.

The Library is usually open the 2nd Saturday each month. The library is located at **Kathy Sander's** office at 1161 Research Blvd in Olivette. Call Kathy to visit the library other times.

StampFest

The St. Louis Philatelic Exhibitors Group has expressed an interest in filling the frames at StampFest. Most members are also members of GSLSC. If you have thought about exhibiting, StampFest is a great venue for a test run of a new exhibit. This year, for the first time, we will have a judge; Jim Adams of Indianapolis.

Synopsis of exhibits should be in to Alan by the night of the August meeting.

Volunteers for StampFest

People are needed to fill a lot of jobs around the show. Frames must be pulled from storage and setup at the community center. Dealers will need assistance loading and unloading. Tables must be set in place and labeled.

We need help manning a registration table for the full run of the show. The junior area needs people to mentor our kids.

Annual BBQ

Our annual picnic BBQ is held at the Crestwood Community Center when the show closes for the day on Saturday.

We will be circulating a list of food suggestions. As usual, the club will provide the meat.

Officers

President Alan Barasch (994-1243)
Vice-President Tom Minor (645-4451)
Treasurer Gary Hendren (576-5261)
Secretary Kathy Sanders (872-0200)
Buxs Banker Roger Grider

© 2000

Greater St. Louis Stamp Club

Start a New Collection

In previous clubs where I wrote the newsletter, (Birmingham, AL and Rogers, AR) I had a series that ran for years about starting a new collection.

Here is a beginning, improved and expanded.

Have you ever thought about starting a new collection?

I start new ones all the time. At one time, I had a diary listing the collections I wanted to start in the future. Some of these went someplace and others died a quick death.

Some of you have seen the beginnings of my exhibit on "Descendants of Queen Victoria" on stamps. This is a collection that could not be compiled from a packet.

To begin the "Descendants" collection, I first needed a checklist to work from. Since my other big hobby is genealogy, I built a new file in my tracking software of all the descendants. Once a chart was in place, I could build a checklist of who was on stamps. I found this harder than it sounds.

So, I had a checklist and a chart to work from. I could begin to search my collections to see what I already had. Check the stock books for singles that are not part of a specific collection. OK, here is a likely piece, but it is part of my Newfoundland collection. Do I buy a second copy or strip the collection for the new one?

In the end, I found that I was more interested in the new collection than in Newfoundland.

Auction DATE 8-28-00

COUNTRY	SCOTT NO	CAT VALUE	DESCRIPTION	MIN BID	OWNERS NO
USA	234	8.00	U, F-VF	2.00	254
MAITA	B-22a	6.50	M, NH, F-VF	2.00	254
FR. POLYNESIA	B-6	8.00	M, VF	2.00	254
BE. SOL. ISLS	84-87	6.90	M, VF	2.00	254
FRANCE	B264-265	6.50	M, VF	2.00	254
			6 TIME/LIFE COLOR PLANTS OF NEW II PLANTS	2.50	321
			SLIGHT COPIES DAMAGED		
USA	163	80.00	U, FRANK CANNON, 15M TERM	10.00	243
	248	3.00	U, F-VF (PINK VARIETY)	.90	243
	E-11	.50	USED, VF	.15	243
	482	2.50	USED VERTICAL IMPERT PL	.50	243
	481	1.10	USED, HORIZONTAL IMPERT PL	.25	243
ITALY	—	?	160 USED ITALIAN DIFF	3.50	242
	1918	13.00	M, NH, S/S	4.50	242
SWEDEN	2019a/1317a	15.50	OVER 15 M/V STAMPS IN S/S	5.00	242
	1241a/1256				
ITALY	1883-1888	39.45	6 S/S ON COLUMBUS VOYAGES	15.00	242
SWEDEN	MISC	185.85	4 MANILLA PAGES OF U/M SWEDEN STAMPS	25.00	242
USA	—	28.50	1981 COMM. STAMPS - MINT USPS SET	8.25	321
	—	14.95	1979 COMM. STAMPS - MINT USPS FOR AERSET	5.10	321
	—	10.33	1974 COMM. STAMPS - MINT USPS FOR AERSET	3.20	321
GERMANY	E-27/E-30	6.60	MNH+1 (PILLOWCASE 14110 PL)	2.00	236
	B384-7	1.30	MNH	.60	236



Greater Saint Louis Stamp Club

perfdispatch

Volume VI, Number 7



September 2000

Where Parkway Central High School

When 4th Monday each month at 8PM

Adult Meeting

In September, Gary will talk about wholly stamps and Alan will present a short piece on Nyassa.

Breakfast Club

The Breakfast group meets the 2nd Monday of the month. The next meeting will be Monday, October 6th. The Breakfast Club meets at LePeep Restaurant at 8:30 AM.

2000 Schedule

September... The Gary & Alan Comedy Hour
October..... TBA
November..... Auction Bux & Elections
December Holiday Party

Library News

The Library is usually open the 2nd Saturday each month. The library is located at **Kathy Sander's** office at 1161 Research Blvd in Olivette. Call Kathy to visit the library other times.

StampFest 2000

StampFest is over and was a resounding success. There are many THANX due and I may miss a few, but some of the members that helped setup, take down, and during the days include **Mario, Steve, Joe, Bob, Gary, Alan, Tom, Ed, Hollis, Harry, Hollister**, and many others.

Exhibits

We had a competitive exhibition for the first time at StampFest and here are the results. Special thanks to our judge Bob Zeigler who came in from Indianapolis.

Best of Show

US Fancy Cancels..... Dave Beuker

Best One Frame

Falkland Islands: 1d "Reds"..... Alan Barasch

Gold

US Fancy Cancels..... Dave Beuker
A Prisoner's Story..... Regency Stamps
Falkland Islands: 1d "Reds"..... Alan Barasch

Vermeil

Saint Louis Postmarks..... Betty Nettles
Postal Stationery to Collect Postage Due
..... David Straight

Silver

Lead into Gold Bob Hanson
Mathematics & Philately Gary Hendren
200 Years of American Architecture.....
..... Tom Minor

Silver-Bronze

Poster Stamps..... Tom Minor
Post Card Rules & Regs..... David Straight

Officers

President..... Alan Barasch (994-1243)
Vice-President Tom Minor (645-4451)
Treasurer Gary Hendren (576-5261)
Secretary Kathy Sanders (872-0200)
Buxs Banker Roger Grider

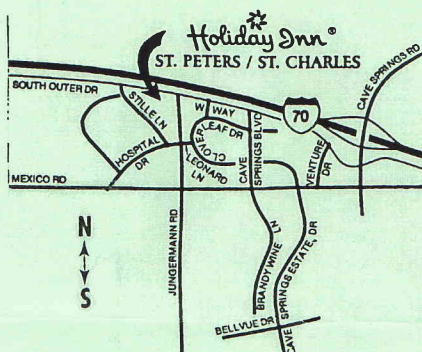
© 2000

Greater St. Louis Stamp Club

Other Shows

The St. Charles Fall Stamp Show will be held on Friday, October 27 from 11 to 7 and Saturday, October 28 from 9 to 4 at the Holiday Inn - St. Peters, 4221 So. Outer Road. Presented by Star Stamps and More.

Note—Friday and Saturday only!



Directions: From I-70,
take Cave Springs Exit 225
to South Outer Road,
drive one-half mile west.

Officers

Alan Barasch will hold an Officers meeting at his house on Saturday, October 7th at 10:30 AM. If you have ever considered running for office in the GSLSC, you will want to be there. We will be drawing up plans for the coming year.

To attend, call Alan at 314-994-1243 for directions. His address is not in the phone book.

MEMBERSHIP MATERIAL AUCTION.

AUCTION DATE 9-25-00

COUNTRY	SCOTT NO	CAT VALUE	DESCRIPTION	MIN BID	OWNERS NO
WW		—	WW STAMP ALBUM / 800 STAMPS	3.00	329
USA		—	ROGER HORNSBY STAMP/COVER FROM STATUE DEDICATION IN ST LOUIS	.90	306
USA		—	DIZZY DEAN STAMP / COVER FROM ST LOUIS STATUE DEDICATION	.90	306
USA		?	70 FIRST DAY COVERS	10.00	321
FRANCE	B-16	8.00	USED, F-VF, SON CANCEL	2.00	254
JAPAN	349-350	6.25	M, H, VF	1.60	254
BELGIUM	16	35.00	USED, FEW SHORT TEETH AT LL	4.00	254
SOLOMON ISLS	44	10.00	M, H, FVF	2.50	254
FRANCE	264-283	8.44	USED	2.00	254
USA	BK-135	7.50	MINT BOOKLET OF WINDMILL STAMPS	3.30	321
	BK-136	11.00	MINT BOOKLET OF WINDMILL STAMPS	4.75	321
	BK-141	10.00	MINT BOOKLET OF "C" STAMPS	4.40	321
	BK-163	11.00	MINT BOOKLET OF STEAM LOCOMOTIVES	4.90	321
	BK-164	21.00	MINT BOOKLET OF CLASSIC CARS	5.50	321
	209	4.25	USED, F-VF, PURPLE CANCEL	1.50	CLUB
	489	1.50	USED, HORIZ PERF COIL, F-VF	.50	CLUB
	531	8.00	USED, IMPERF, OFFSET PRINTING	2.00	CLUB
	158	.40	USED, F-VF, NUMERAL CANCEL	.15	CLUB
	471	14.00	USED, F-VF, NY CANCEL	4.00	CLUB
GERMANY	C-27/C-30	6.60	MNH. (PINHOLE IN 10 P)	2.00	236
2000-09-perf-dispatch	B384/7	1.30	MNH	.60	236 ¹⁵



Greater Saint Louis Stamp Club

perfdispatch

Volume VI, Number 8

October 2000

Where Parkway Central High School

When 4th Monday each month at 8PM

Adult Meeting

In October, Gary will talk about **RURAL FREE DELIVERY** and Alan will present a short piece on **NYASSA**.

Breakfast Club

The Breakfast group meets the 2nd Monday of the month. The next meeting will be Monday, November 11th (Veteran's Day for those of you who are normally working on Monday morning!). The Breakfast Club meets at LePeep Restaurant at 8:30 AM.

2000 Schedule

October..... The Gary & Alan Comedy Hour
November..... Auction Bux & Elections
December Holiday Party
January, 2001 Poster Stamps
February..... Roundtable:
..... Selling your Collection

Nominations

Nominations have been made for officers to lead the group in the coming year. If you would like to serve, have a nomination made from the floor in November:

Tom Minor President
Joe Conti Vice-President
Gary Hendren Treasurer
Alan Barasch Secretary
Kathy Sanders Librarian
Roger Grider Bux Banker



Auction Bux Sale

We have received several nice items to be included in the Auction Bux sale in November. These include a Canada "Blue Nose", early US, a bottle of wine, and some catalogs. Items are still needed and are *not* limited to stamps.

Get your list to Joe Conti by November 12th to assure they get included.

How do Bux work?

All year as you attend meetings, there are awards for various activities. Presenting a program at a meeting earns you \$50, attending a meeting earns \$5, there are varying amounts for purchasing in auctions, being an officer, helping at the shows, etc..

These are paid in Bux Script at each meeting and may be redeemed by bidding with them in the Auction Bux sale each year.

Holiday Party

The Holiday Party will be held again this year at Orlando Gardens at Dorsett & McKelvey. Charge will be \$15 per person. We plan to advertise to the local philatelic community to get enough people to cover our minimum.

Again this year, the Hendrens will be pulling out the stops for fun games and brain twisters.

New Members

Since StampFest in September, we have attracted several new members and prospects. Have a collecting friend; bring him along!

Officers - 2000

President Alan Barasch (994-1243)
 Vice-President Tom Minor (645-4451)
 Treasurer Gary Hendren (576-5261)
 Secretary Kathy Sanders (872-0200)
 Buxs Banker Roger Grider

© 2000 Greater St. Louis Stamp Club, Inc
 GSLSC is a 501(3)c Non-profit organization

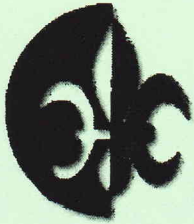
Shows Calendar

The ST. CHARLES FALL STAMP SHOW will be held on Friday, October 27 from 11 to 7 and Saturday, October 28 from 9 to 4 at the Holiday Inn - St. Peters, 4221 So. Outer Road. Presented by Star Stamps and More.

Note—Friday and Saturday only!

AUCTION DATE 10-23-00

COUNTRY	SCOTT NO	CAT VALUE	DESCRIPTION	MIN BID	OWNERS NO
US	?	?	3 FDC-BASEBALL GEO. SISLER,	1.80	306
			TY COBB + CHRISTY MATHEWSOII		
US	?	?	SPECIAL CAMEL AT DIZZY DEAN	.90	306
			STATUE 8-20-00		
US	?	?	SPECIAL CAMEL AT ROGER HORNBOY	.90	306
			STATUE 8-20-00		
US	?	?	CALIFORNIA FDC	.75	306
US	236	11.00	U, F-VF	2.00	254
MEXICO	813-818	29.00	M, F-VF	7.00	254
RHODESIA	236a	40.00	M, FVF	9.00	254
MEXICO	642	10.00	M, F-VF	2.00	254
ARGENTINA	641	7.75	M, F-VF	2.00	254
—	—	8.95	1984 HARRIS MASTER Supp: ALBUM PAGES	4.00	266
—	—	99.95	MINKUS 1988 OCEANIA: ALBUM PAGES	20.00	266
—	—	—	EMPTY MINKUS ALBUM/DUST COVER	10.00	266
US	—	8.00+	ALL DIFF MINT POSTAGE@FACE	5.76	266
US	—	8.00+	ALL DIFF MINT POSTAGE@FACE	6.55	266
US	1737		COMPLETE BOOKLET \$2.40 FACE	2.50	23M
US			1979 COMMEM MINT SET 4/15 FACE	5.00	23M
US	—	—	AVIATION PIONEER BOOK (NO STAMPS)	10.00	23M
CZECH	—	?	350 M/U STAMPS	10.00	23M
G.B	—	415.68	1428 GB USED, DUPS	41.00	321
US	1912-19	9.00	FDC ON SPECIAL S/S	3.50	321
	BERRIES		BERRIET COIL "CORRECT WAY TO COLLECT"	3.30	321
	1764-67	2.00+	BLK OF 4 ON SPECIAL DISPLAY	2.00	321
Central Af	349-356	6.45	FULL SET ON DISPLAY BOARD	2.50	321
US	186	15.50	U, F-VF, NUMERAL CAMEL	4.75	CLUB
	206	1.00	U, F-VF, NINE CAMEL	.40	CLUB
	207	.30	U, F-VF, ALPAA CAMEL	.10	CLUB
	497	7.50	U, F, COIL	2.50	CLUB



Greater Saint Louis Stamp Club

Perf Dispatch

Volume VI, Number 9

November 2000

Where Parkway Central High School

When 4th Monday each month at 8PM

November Meeting

Junior members will meet at 6:45.

Activities at Adult Meeting:

1. Election of officers for next year.
2. A chance to win some more Bux to buy with.
3. Auction Bux Sale

2000-2001 Schedule

November.....²⁷ Auction Bux & Elections
December ..¹¹..... Holiday Party
January, 2001 Poster Stamps
February..... Roundtable:
..... Selling your Collection

Nominations

Nominations have been made for officers to lead the group in the coming year. If you would like to serve, have a nomination made from the floor in November:

Tom Minor President
Joe Conti Vice-President
Gary Hendren Treasurer
Alan Barasch Secretary
Kathy Sanders Librarian
Roger Grider Bux Banker

✂ _____

Auction Bux Sale

All year as you attend meetings, there are awards for various activities. Presenting a program at a meeting earns you \$50, attending a meeting earns \$5, there are varying amounts for purchasing in auctions, being an officer, helping at the shows, etc..

These are paid in Bux Script at each meeting and may be redeemed by bidding with them in the Auction Bux sale each year.

A heartfelt thanks to everyone who donated items for the Bux sale.

~ Holiday Party ~

The Holiday Party will be held again this year at Orlando Gardens at Dorsett & McKelvey. Charge will be \$15 per person. The club picks up the balance. Spouses & significant others encouraged & invited.

The bar opens at 6:30 with dinner at 7:15. Dinner includes salad, 2 meats, a range of vegetables, dessert and beverages.

Again this year, Gary & Lynda Hendren will be pulling out the stops for fun games and brain twisters.

Fill in the coupon at the bottom of this page and send payment to Gary Hendren. See map on the back page and plan to join us there.

Use this coupon to make your Reservation for the Holiday Party

Name _____

Enclosed find payment

Guest 1 _____

of \$15 each for _____ #

Guest 2 _____

Total \$ _____

Mail to: Gary Hendren, 12737 Glenage, Maryland Heights, MO 63043 by 12/1/2000

Officers - 2000

President Alan Barasch (994-1243)
Vice-President Tom Minor (645-4451)
Treasurer Gary Hendren (576-5261)
Secretary Kathy Sanders (872-0200)
Buxs Banker Roger Grider

© 2000 Greater St. Louis Stamp Club, Inc
GSLSC is a 501(3)c Non-profit organization

Shows Calendar

Don't forget the monthly bourse at Stratford Inn in Fenton.

NO Breakfast Club Meeting

The Breakfast group normally meets the 2nd Monday of the month. As our Holiday Party will be just hours later, the meeting is cancelled.

First Chance

Dues reminder \$5 Single, \$6 Family

