

2001-01-perf-dispatch	2
2001-02-perf-dispatch	4
2001-03-perf-dispatch	6
2001-04-perf-dispatch	8
2001-05-perf-dispatch	10
2001-06-07-perf-dispatch	12
2001-08-perf-dispatch	14
2001-09-perf-dispatch	16
2001-10-perf-dispatch	18
2001-11-12-perf-dispatch	20



Greater Saint Louis Stamp Club

perfidispatch

Volume VII, Number 1

January 2001

Where Parkway Central High School

When 4th Monday each month at 8 PM

Adult Meeting

This month's meeting program is a presentation of Poster Stamps by our president, Tom Minor. As always, an auction follows the program.

Breakfast Club Meeting

The Breakfast group normally meets the 2nd Monday of the month. The next meeting is February 12th at Le Peep Restaurant in Chesterfield.

Junior Club

We will work on Bronze Award and introduction of Silver Award requirements.

2001 Schedule

January, 2001 Poster Stamps
February..... Roundtable:
..... Selling your Collection
March 2-4..... St. Louis Stamp Expo

Dues

If your address label contains a **00** on the right under the membership number, your 2001 dues are needed. Send to Gary Hendren, 12737 Glenage Drive, Maryland Heights, MO 63043 or bring to a club meeting.



Holiday Party

The Holiday Party was held a week late due to the snow storms. Attendance was down from previous years. We need to look at a few proposals to revamp the event. The club lost money on the event this year.

Stamp Expo

Committee chairpersons report that the following are needed for Stamp Expo:

Packets in glassines of off-paper US or foreign stamps in groups of 25. Bring to January or February meeting for \$5 in Auction Bux for each packet up to 20 packets for US or foreign for a maximum award of \$200.

People to work on setup and breakdown, help with the Friday school day, check-in. Contact any officer (they are all on the committee).

Web Presence?

The Greater St. Louis Stamp Club has a presence on the World Wide Web at <http://www.mophil.org/gslsc.htm>. A complete list of programs for the year is listed.

Alan Barasch, webmaster for the GSLSC has also produced web sites for other local clubs including Webster Groves, the Exhibitors Self-Help Group, and the Missouri Postal History Society. <http://www.mophil.org>
He is also webmaster of the APS Chapter Activities committee
<http://www.stamps.org/cac/>.

Officers - 2001

President..... Tom Minor (645-4451)
 Vice-President..... Joe Conti (xxxx)
 Treasurer..... Gary Hendren (576-5261)
 Secretary..... Alan Barasch (994-1243)
 Librarian..... Kathy Sanders (872-0200)
 Buxs Banker..... Roger Grider


© 2001 Greater St. Louis Stamp Club, Inc
 GSLSC is a 501(c)3 Non-profit organization

Shows Calendar

The **Saint Louis Stamp Expo** has been moved to the **Airport Hilton Hotel**. It will be held March 2-4, 2001.

MEMBERSHIP MATERIAL AUCTION.

AUCTION DATE 1-22-01

COUNTRY	SCOTT NO	CAT VALUE	DESCRIPTION	MIN BID	OWNERS NO
USA	2482	3.00	MINT, NO GUM	1.25	55
RYUKYUS	MISC	?	20 CHRISTMAS SEAL STAMPS (DIFF) FROM 1952-72	4.00	55
USA	814	1.40	MNH PB #24311 UR	.40	23
	1285	1.00	MNH PB #28968 UR	.45	23
	1288	1.25	MNH PB #29603 LR	.65	23
	1591	.85	MNH PB #36939 UR	.40	23
	1399	1.50	MNH PB #34660 UR	.75	23
	1501	.70	MNH PB #34249 UR	.35	CLUB
	1501	.70	MNH PB #34233 LR	.35	CLUB
	1504	.65	MNH PB #34386 UR	.35	CLUB
	E12a	.50	USED, AVG	.25	CLUB
	250	.50	USED, F	.20	CLUB
ICELAND	132	8.50	M, VF	2.00	254
POLAND	647-656	20.73	M, HINGED, VF	4.00	254
FR. EQ. AFRICA	166-184	6.50	M, HINGE MK, VF	2.00	254
BAHAMAS	103	12.00	M, HINGED, VF	2.50	254
USA	C16-17	8.00	M, HINGE MK, VF	2.00	254
	0-146	1.40	7-MNH INCLUDING 	.28	55
	0-143	.80	CORNER BLOCK OF 4 MNH	.04	55
	0-147	3.05	STRIP OF 7 MNH	1.33	55
	0-154	15.60	SHEET OF 80 MINUS CORNER 2)	.78	55
	2417	5.00	LOU GEHRIG FDC FROM COOPERSTOWN	1.75	321
	2115	?	OLD ST. FERDINAND SPRING 1820	1.00	321
	2115	?	TAIPE DE NOYER 1708	1.00	321
	2115	?	JOHN MYERS HOME 1869	1.00	321
	2115	?	WEST END NARROW GAUGE RR STATION 1878	1.00	321
			FLORISSANT BI-CENT COVERS MAY 3, 1986		
			4-DIFF CACHETS		



Greater Saint Louis Stamp Club

perfidispatch

Volume VII, Number 2



February 2001

Where Parkway Central High School

When 4th Monday each month at 8 PM

Adult Meeting

This month's meeting program is a presentation of by our guest speaker, **Tom Wiley**; owner of Gateway Stamp Company.

From their website, "We have seldom dealt in stamps, even though that was our original plan. Gateway has combined the very best in art, color photographs, history, and personal autographs, resulting in a fantastic series of over 1,000 full-color silk cachets envelopes."

As always, an auction follows the program.

Breakfast Club Meeting

The Breakfast group normally meets the 2nd Monday of the month. The next meeting is March 12th at Le Peep Restaurant in Chesterfield.

Junior Club

We will work on Bronze Award and introduction of Silver Award requirements. This is the same program as February.

2001 Schedule

February, 2001..... Guest: Tom Wiley
..... Covers cachets for Sporting Events
March 2-4..... St. Louis Stamp Expo
March 26..... Roundtable:
..... Selling your Collection
Coming Soon:

Lundy Islands
Mexico: Early Issues

Dues

Last chance! If your address label contains a **oo** and is colored pink on the right under the membership number, your 2001 dues are needed. Send \$5 (or \$6 family) to Gary Hendren, 12737 Glenage Drive, Maryland Heights, MO 63043 or bring to a club meeting. Do not send to the editor.

Our Members

Several of our members sent exhibits to the APS AmeriStamp Expo & Nordia held in Tucson, Arizona in January. Results included:

Prix d'Honneur

Post Cards: Rules & Regulations David Straight
Silver-Bronze

Falkland Islands Alan Barasch
Postal Stationery for Postage Due David Straight
Other members attending the show were **Gary Hendren** and **Betty Nettles**.

Saint Louis Stamp Expo

The show will be here in less than a week. Are you ready for some excitement?

People are still needed to work on setup and breakdown, help with the Friday school day, and check-in. Contact any officer (they are all on the committee). **Gary Hendren** and **David Straight** will be working with over 20 Boy Scouts this year on merit badge requirements.

[HTTP://WWW.MOPHIL.ORG/GSLSC.HTM](http://www.MOPHIL.ORG/GSLSC.HTM)



Officers - 2001

President Tom Minor (645-4451)
 Vice-President Joe Conti (838-6342)
 Treasurer Gary Hendren (576-5261)
 Secretary Alan Barasch (994-1243)
 Librarian Kathy Sanders (872-0200)
 Buxs Banker Roger Grider

© 2001 Greater St. Louis Stamp Club, Inc
 GSLSC is a 501(3)c Non-profit organization

Auction List

As usual, the auction list follows. Remember the ground rules. Everyone may add items to the auction but must be submitted to **Joe Conti** in time for him to write up the list (your editor wrote him a program to speed up the process) and get it to the editor. At the meeting, no item will be presented for auction unless it has an open bid.

Shows Calendar

The **Saint Louis Stamp Expo** has been moved to the **Airport Hilton Hotel**. It will be held March 2-4, 2001. The theme of the show is the 75th Anniversary of Route 66. Our awards and speakers will follow this theme.

Tickets are still available for the Awards Banquet on Saturday night.

The Webster Groves Stamp Club meeting will be held at the show venue on Friday evening of the show at 8:00 PM. The guest speaker at that time will be **Michael Laurence**, editor of Linn's Stamp News. Everyone is invited to attend.

Membership Material Auction

~~March~~, 2001
Feb

2/19/01

Lot #	Country	Scott No.	Cat \$	Description	Min Bid	Owner #
1	USA	NONE		1998 SCOTT CLASSIC CATALOG	2.00	340
2		1020	0.55	MNH PB	0.20	
3		1013	0.55	MNH PB	0.20	
4		1097	0.55	MNH PB	0.20	
5		1097	0.55	MNH PB	0.20	
6		1106	0.55	MNH PB	0.20	
7		3426	UNKNOWN	CLAUDE PEPPER FDC	0.85	306
8		3420	UNKNOWN	GEN. STILLWELL FDC	0.85	
9			UNKNOWN	ED. G. ROBINSON FDC	0.85	
10		3408S	UNKNOWN	DIZZY DEAN LEGEND FDC	0.85	
11		304	\$55.00	M, NG, PERFS TOUCH B FRAME	4.00	321
12		615	\$6.00	M, PLATE # SINGLE	2.00	
13		159	\$15.00	U, VF, CORK CANCEL	3.00	
14		73	\$45.00	U,AVG, CORK CANCEL	3.00	
15		234	\$8.00	U, VF, MACHINE CANCEL	2.00	
16	AUSTRIA	46	\$50.00	U,VF,OIL STAIN FROM CANCEL	5.00	254
17	ITALY	62	\$30.00	M, PERFS CUT T FRAME	4.00	
18	PORTUGAL	153	\$10.00	M, VF	2.50	
19	SAN MARINO	29-31	\$26.75	M(29 U), PERFS TOUCH FRAME ON 30&31	4.00	
20	SWITZERLAND	97	\$8.00	U,F-VF,ONE SHORT PERF	2.00	
21	DENMARK	31b	\$27.50	U, F-VF, SM PIECE OF CORNER OFF	2.00	
22	SUPPLIES			16 PG. STOCK BOOK	3.00	23
23				WHT. ACE PB FILE, STRIP OF 20	1.00	
24				3X5 GLASSINE OF BULK RATE SQUARES	1.00	
25	NETHERLANDS			STOCK SHEET OF 38 USED	1.00	
26				4X5X12 PLASTIC BOX OF MULTIPLE USED	3.00	
27	USA	400	\$20.00	U,F-VF,ONE SHORT PERF	5.00	272
28		2419	\$9.00	FDC	2.50	
29		2624/2629	\$27.40	M S/S SET, FACE IS 16.34	17.00	
30	ITALY	633	\$12.50	MNH, VF	4.00	



Greater Saint Louis Stamp Club

perfidispatch

Volume VII, Number 3

March 2001

Where Parkway Central High School

When 4th Monday each month at 8 PM

Adult Meeting

This month the program is a roundtable discussion of "Selling your Collection." Everyone should join the discussion and offer the pros and cons of various methods.

As we grow older, we inevitably come to a point where we are bored with a portion of our collection, would like to turn it over in our own lifetimes, or simply give up collecting (heaven forbid!).

If you have ever sold part of your collection, we would especially like to hear from you.

As always, an auction follows the program.

Breakfast Club Meeting

The Breakfast group normally meets the 2nd Monday of the month. The next meeting is April 9th at Le Peep Restaurant in Chesterfield.

Junior Club

We will work on Bronze Award and introduction of Silver Award requirements.

2001 Schedule

March 26 Roundtable:
.....Selling your Collection

Coming Soon:

Lundy Islands
Mexico: Early Issues
Identifying Washington-Franklins

GSLSC Anniversary

This year, your Greater St Louis Stamp Club celebrates its 25th Anniversary. At StampFest in September, we would like to bring back all the old members; especially officers for one big celebration.

Many of us were not collecting in 1976 or were not in Saint Louis. If you have any memorabilia connected with the club, contact Alan or Gary to get it included in our anniversary exhibit.

Our Members

Many of our members participated in St. Louis Stamp Expo. Exhibiting members included:

Best Display Class & Gold

Down the Tube..... David Straight
A study of Pneumatic tube mail

Silver

Falkland Islands: 1878-1902 1^d..... Alan Barasch
Several members had dealer booths and lots of members helped by manning the doors, setup, and take down.

Fenton Show

Just a reminder that the dealer bourse continues at the Stratford in Fenton on the second Saturday of each month.

[HTTP://WWW.MOPHIL.ORG/GSLSC.HTM](http://www.mophil.org/gslsc.htm)



Officers - 2001

President Tom Minor (645-4451)
 Vice-President.....Joe Conti (838-6342)
 Treasurer.....Gary Hendren (576-5261)
 Secretary Alan Barasch (994-1243)
 Librarian Kathy Sanders (872-0200)
 Buxs Banker Roger Grider

© 2001 Greater St. Louis Stamp Club, Inc
 GSLSC is a 501(3)c Non-profit organization

Auction List

As usual, the auction list follows. Remember the ground rules. Everyone may add items to the auction but must be submitted to **Joe Conti** in time for him to write up the list (your editor wrote him a program to speed up the process) and get it to the editor. At the meeting, no item will be presented for auction unless it has an open bid.

Shows Calendar

Fenton Show 2nd Saturday each Month
 Nancy's Show St. Charles, May 18-19
 APS National Convention Chicago, Aug 24-27
 StampFest Crestwood, September 1-2
 Not too soon to start planning!

Chicago

Are you planning a trip to the APS Convention in Chicago? Not sure if you want to go?

It is not often that the convention is so close to home for us. A number of people have already indicated that they are planning to attend. **Alan Barasch** is coordinating a list; possibly to help find carpooling rides.

Alan plans to be there all four days as he will be conducting meetings for the Falklands Study Group.

Membership Material Auction March, 2001

03/19/2001

Lot #	Country	Scott No.	Cat \$	Description	Min Bid	Owner #
1	United States	295	\$18.00	M, VF,	5.50	236
2	United States	RW1	\$125.00	U, ,	25.00	236
3	United States	RW15	\$14.00	U, ,	5.00	236
4	Canada	C3	\$3.25	U, ,	1.00	236
5	Canada	E-7	\$275.00	U, ,	1.00	236
6	Spain & Colonies	various		M/U, ,	1.00	25
7	United States			1988 Commem Mint set & book, M, ,	10.00	25
8	Canada	52	\$12.50	U, ,	4.00	25
9	Canada	53	\$2.00	U, ,	0.50	25
10	Canada	143	\$3.75	U, ,	1.25	25
11	United States	3033		Plate block, M, , Block,	0.60	272
12	Danish West Indies	J-1	\$10.00	H, ,	2.50	272
13	Supplies			16 page stock book, , ,	3.00	23
14	Supplies			White Ace PB file, strip of 20, , ,	1.00	23
15	United States			3x5 glassine of Bulk Rate Squares, U, ,	1.00	23
16	Netherlands			Stock sheet of 38, U, ,	1.00	23
17	Netherlands			4x5x12 Plastic box of multiples, U, ,	3.00	23
18	Portugal	40	\$30.00	U, Ave, Touching at top	4.00	321
19	Mexico	O-10	\$9.00	M, VF,	2.00	321
20	St. Vincent	211a	\$6.50	U, VF,	2.00	321
21	Great Britain	179	\$30.00	Soiled, heavy cancel, U, ,	2.00	321
22	Austria	6a	\$350.00	U, , Touching at top	35.00	321
23	Mexico	745	\$15.00	Thin spot, U, VF,	2.00	254
24	Finland	19	\$55.00	Small toned spot, U, VF,	10.00	254
25	Denmark	4a	\$13.00	U, , Touching at Right	2.00	254
26	United States	510	\$17.00	small tear, regummed, H, VF,	2.50	254
27	United States	339	\$57.50	M, ,	10.00	254



Greater Saint Louis Stamp Club

Perf Dispatch

Volume VII, Number 4



April 2001

Where Parkway Central High School

When 4th Monday each month at 8 PM

Adult Meeting

The program this month is a brief look at some of the treasures of the collection of the Smithsonian Institution.

The sticky note attached to the slides says that 1/2 were shown in 1993. We will visit the second half and can come back around for a re-run in 2009.

As always, an auction follows the program.

Breakfast Club Meeting

The Breakfast group normally meets the 2nd Monday of the month. The next meeting is May 14th at Le Peep Restaurant in Chesterfield.

2001 Schedule

April 23 Treasures of Smithsonian Collection
May 29 Perfins
June 25 Lundy
July NO MEETING

Coming Soon:

Identifying Washington-Franklins

GSLSC Anniversary

This year, your Greater St Louis Stamp Club celebrates its 25th Anniversary. At StampFest in September, we would like to bring back all the old members; especially officers for one big celebration.

Many of us were not collecting in 1976 or were not in Saint Louis. If you have any memorabilia (member lists, newsletters, photos, covers) connected with the club,

contact Alan or Gary to get it included in our anniversary exhibit.

Our Members

Next month, our special guest editor will be Tom Minor; our esteemed president while your regular editor takes a well-deserved vacation.

Fenton Show

The dealer bourse continues at the Stratford in Fenton on the second Saturday of each month.

Postal History News

The Webster Groves Stamp Club is gearing up to present a St Louis postal history program at least one meeting a month for the next year. This is part of an effort to collect as much St. Louis information to eventually publish a book.

An interesting by-product of this effort is that the GSLSC will have a ready list of presenters to call on for our programs for some time to come.

We would encourage anyone who is interested in any phase of St Louis Postal History to contact Gary Hendren or check the Missouri Postal History web at www.mophil.org/mopohissoc.stm.

Important Notice

The meeting in May is moved to Tuesday, May 29th as the school will be closed on Monday in observance of Memorial Day.

<http://www.MoPhil.org/gslsc.htm>

Officers - 2001

President Tom Minor (645-4451)
 Vice-President Joe Conti (838-6342)
 Treasurer Gary Hendren (576-5261)
 Secretary Alan Barasch (994-1243)
 Librarian Kathy Sanders (872-0200)
 Buxs Banker Roger Grider

© 2001 Greater St. Louis Stamp Club, Inc
 GSLSC is a 501(3)c Non-profit organization

Auction List

As usual, the auction list follows. Remember the ground rules. Everyone may add items to the auction but must be submitted to **Joe Conti** in time for him to write up the list (your editor wrote him a program to speed up the process) and get it to the editor. At the meeting, no item will be presented for auction unless it has an open bid.

Shows Calendar

Fenton Show 2nd Saturday each Month
 Nancy's Show St. Charles, May 18-19
 APS National Convention Chicago, Aug 24-27
 StampFest Crestwood, September 1-2
 Not too soon to start planning!

StampFest

We are already planning the fall stamp show. Dealer contracts are already out and we are preparing for exhibits.

The show will again be held at the Crestwood Community Center on Labor Day weekend (Saturday and Sunday).

If you are interested in exhibiting, the St Louis Philatelic Exhibitors Self-Help Group (STLPESHG) is the place to start. Call Alan Barasch for meeting places and times.

Membership Material Auction

April, 2001

4/16/01

Lot #	Country	Scott No.	Cat \$	Description	Min Bid	Owner #
1	Argentina	VARIOUS	\$>31.00	OVER 200 DIFF, INCLUDES IDENTIFIED VARIETIES, M/U, VF,	9.00	321
2	Brazil	VARIOUS	\$>3.00	20 DIFF. ALL SCOTT IDENTIFIED, M/U, Ave,	1.00	321
3	FRENCH ANDORRA	340	\$16.50	MINT, UNUSED, VF	4.00	321
4	GABON	42	\$16.00	MINT, UNUSED, VF	4.00	254
5	Romania	172	\$45.50	MINT, UNUSED, SMALL HINGE THIN, OC	4.50	254
6	Russia	?	?	S/S FROM 1978 SEMI- POSTAL, M, VF,	1.50	321
7	Spain	217	\$50.00	FEW SHORT TEETH,, U, , Touching at Right	3.00	254
8	United States	301	\$19.00	MNH, F-VF	4.50	254
9	United States	190	\$45.00	F-VF, TOOTH MISSING, U, ,	7.00	321
10	United States	C-11	\$8.00	MNH, F-VF, , ,	2.00	254
11	United States		\$/	FLORISSANT BI-CENT. COVER, OLD ST. FERDINAND'S SHRINE	1.00	321
12	United States	?	\$/	FLORISSANT BI-CENT. COVER, JOHN MYERS HOUSE, , ,	1.00	321
13	United States	?	\$?	FLORISSANT BI-CENT COVER, WESTEND NARROW GAUGE RR STATION, , ,	1.00	321
14	United States	BK-135	\$7.50	MINT BOOKLET, , ,	4.00	500
15	United States	BK-152	\$5.50	MINT BOOKLET, , ,	3.50	500
16	United States	2417	\$5.00	LOU GEHRIG FDC, , ,	3.00	500
17	United States	VARIOUS	\$28.10	21 PL BLOX FROM FAMOUS AMERICANS, ,	10.00	55

18 US

4⁰⁰ 4 Recent FDCs

245 BH

The Perf-Dispatch

Official Newsletter of the Greater St. Louis Stamp Club

May, Year 25

Meeting: Tuesday May 29, 2001

The meeting will be Tuesday (due to Memorial Day) evening at Parkway Central High School.

Part 1: Workshop on Perflins at 7:00

Anyone wishing to do so, is invited to bring perflins (U.S.) to be identified from Gary H's catalogs.

Part B: Program and such

The program this month is **PERFLINS**, given by Professional Accumulator Gary Hendren.

Part Third: Auction

Our regular auction follows the program—see the auction list on the back page. We have some nicer than usual things this month.

Reminder: if you want to put something in the auction, simply let Mr. Conti, Lord of the List, know about it soon enough to get in the newsletter.

Breakfast Club Meeting

The next Breakfast Club meeting is 2nd Monday, June 11th at Le Peep Restaurant in Chesterfield.

Upcoming

It's still the 75th anniversary of Route 66 this year. Author Michael Wallis (*Route 66: The Mother Road*) has a new revised edition, and will be in St. Louis June 26. www.michaelwallis.com

June meeting: Lundy Island. No July meeting.

We're still hoping that some of our members will find old GSLSC memorabilia to display at Stampfest in September, and we hope that everyone will plan to come to the Saturday picnic/dinner (Sept. 1) to celebrate.

Meeting: Tuesday May 29, 2001

***June 9 St. Louis, MO; Stratford Inn at I44, Bowles Ave. exit, South Outer Road 10 to 4:30.

✓♦♦Aug. 24-27 APS National Convention, Chicago, ILL.

☐✓September 1-2 GSLSC StampFest, St. Louis

Your Prexy Rants and Raves

I enjoyed spending some time at the Star Stamps Semi-annual Bourse in St. Peters on May 19th. That's because stamp collectors (and even most dealers!) are very pleasant people. And also, because I enjoy looking before I buy.

Internet be damned, there is no substitute for face-to-face meetings. Holding something in your hands is much different from staring at a bad 3" scanned picture on a computer screen. Given that, it's a shame that as of this spring we have no stamp store that caters to beginners in St. Louis. Which makes our club, and the fall Stampfest, that much more important in giving beginner adults (and kids) a chance to experience philately.

Programs R Us

As always, we would be delighted to have members volunteer to give programs. It (almost) never happens. So don't be surprised if someone comes a knock-knock-knockin' on your door (ok, maybe a phone call) with an offer you can't refuse.

Seriously, if you are willing to give a program, or have a suggestion or a request for 2002, drop any of the officers a line.

Lot #	Country	Scott No.	Cat \$	Description	Min Bid	Owner #
1	ICELAND	384-385	\$2.50	MNH, , ,	1.00	23
2	SUPPLIES		\$15.00	SHOWGARD MOUNT CUTTER, , ,	5.00	
3	MISC	ITERATUR	17.00 IF NEW	USED STREETS OF ST. LOUIS, , ,	2.00	
4	USA	888	\$1.75	MNH, , ,	0.60	
5	USA	MISC	\$?	PKG OF BULK RATE CUT SQ., , ,	0.50	
6	USA	RW-15	\$14.00	, U, , ,	4.00	236
7	Canada	E-7	\$27.00	, U, , ,	1.00	
8	Canada	C-7	\$3.25	, U, , ,	1.00	
9	USA	295	\$18.00	, M, , ,	5.00	272
10	DANISH W. INDIES	J-1	\$10.00	U, HINGED, , ,	2.50	
11	Canada	53	\$2.00	, U, , ,	0.50	25
12		143	\$3.75	, U, , ,	1.25	
13		52	\$12.50	, U, , ,	4.00	
14	USA		\$?	1988 COMM MINT SET & book, M, ,	8.00	
15		C-24	\$10.50	M, TINY THIN, , VF,	2.50	254
16	Portugal	153	\$27.50	M, F, , ,	4.50	
17		57	\$22.50	M, HINGED, NG, VF, , ,	3.00	
18	Japan	503	\$11.00	, M, VF,	3.00	
19	GREENLAND	46	\$9.00	VF, M, ,	2.30	
20	USA	146	\$9.00	U, F-VF, DEC 10, 1883 CANCEL	2.00	CLUB
21		184	\$0.40	U, F-VF, , ,	0.10	
22		186	\$24.00	NUMERAL "2" CANCEL, U, Ave,	5.00	
23		219D	\$0.90	NUMERAL "9" CANCEL, U, Ave,	0.20	
24		486	\$0.25	VF, U, , ,	0.05	
25		330	\$27.50	F-VF, U, , ,	6.00	55
26		830	\$4.25	M, NO GUM, , ,	2.00	
27		1053	\$6.75	, U, VF,	2.00	
28		2482	\$3.00	V LIGHT CANCEL, U, VF,	1.25	
29		2543	\$5.00	V LIGHT CANCEL, U, VF,	2.00	
				M, HINGE REMNENT, PLAYING CARD REV.,		
30		RU-6	\$35.00	, ,	7.00	
31		191	\$250.00	, U, Ave, Touching at top	55.00	321
				SPIRIT OF ST. LOUIS CANCEL, MAY 21,		
32		1710	\$?	1977, , , Cover,	0.50	
33		2251	\$2.50	FIRST DAY COVER-GIRL SCOUTS, , ,	0.60	
				6 TIME/LIFE COLOR PRINTS OF WWII WAR		
34			\$?	PLANES, SLIGHT CORNER DAMAGE, , ,	2.50	
35	SUPPLIES		\$?	BLACK 3 " NOTEBOOK/ EMPTY SHEETS	1.00	
				AM. FUL-VIEW COVER DISPLAY ALBUM,		
36	SUPPLIES		\$5?	HOLDS OVER 90 COVERS, , ,	3.00	
37	USA		FACE- 80	FDC OF PAN AM .80 INVERT	1.75	306
38			\$EST. 2.40	4 RECENT CACHETCOVERS, , ,	1.75	
39			\$FACE- .34	RECENT NOBEL PRIZE CACHET	0.60	
40		BOOK	\$ 39.00	SCOTT CATALOG Vol. 1 2001	10.00	271

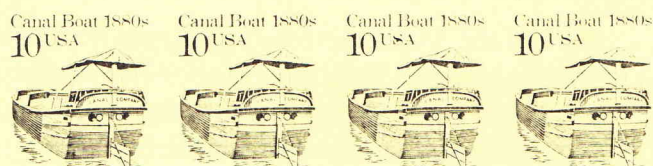
The Perf Dispatch Vol.7, No.5

Published by the Greater St.Louis Stamp Club

Officers

President	Tom A. Minor (645-4451)
Vice President	Joe Conti (838-6342)
Treasurer	Gary Hendren (576-5261)
Secretary & Editor	Alan Barasch (994-1243)
Librarian	Kathy Sanders (872-0200)
buxs Banker	Roger Grider

Contents © 2001 T.Minor/GSLSC, Inc



Deep Thoughts by your Glorious Leader

I told her she was more beautiful than any stamp in my collection, and all she said was "Philately will get you nowhere".



Greater Saint Louis Stamp Club

perfdispatch

Volume VII, Number 6

June-July, 2001

Where Parkway Central High School

When 4th Monday each month at 8 PM

Adult Meeting

The program this month is a brief look at some of the treasures of the collection of the Smithsonian Institution.

The sticky note attached to the slides says that 1/2 were shown in 1993. We will visit the second half and can come back around for a re-run in 2009.

As always, an auction follows the program.

Breakfast Club Meeting

The Breakfast group meets the 2nd Monday of the month. The next meeting is July 9th at Le Peep Restaurant in Chesterfield.

2001 SCHEDULE

June 25..... Lundy
July..... NO MEETING
August 27 Minerals in Missouri
Sept 1-2 StampFest
Sept 24 Silent Auction

GSLSC Anniversary

This year, your Greater St Louis Stamp Club celebrates its 25th Anniversary. At StampFest in September, we would like to bring back all the old members; especially officers for one big celebration.

Many of us were not collecting in 1976 or were not in Saint Louis. If you have any memorabilia (member lists, newsletters, photos, covers) connected with the club, contact Alan or Gary to get it included in our anniversary exhibit.

Editor's Message

I want to thank our president, Tom Minor for graciously stepping in last month to produce a newsletter. It gave me time to really enjoy my vacation.

Future Meetings

The meeting in September will consist of a "Silent Auction." Our auction administrator tells us that members can submit lots in the usual way so that they are included in the list in the newsletter. Then rather than conducting a voice bid, there will be only the chance to look at them on the floor.

Got an idea for a meeting program? Want to present yourself but have never been asked? Mention the topic to one of our officers to be added to the schedule.

Going to Chicago?

Got plans for the APS Convention in Chicago. It is seldom that the convention is so close to home, so you would not want to miss it.

Our president will be exhibiting his new Poster Stamp exhibit in a brand new category and other members will be exhibiting or conducting meetings.

Your editor will be at the Affiliates table and conducting the meeting for the Falklands Study Group.

Important Notice

There is never a meeting in July. The school is closed for the summer.

<http://www.MoPhil.org/gslsc.htm>

Officers - 2001

President Tom Minor (645-4451)
 Vice-President Joe Conti (838-6342)
 Treasurer Gary Hendren (576-5261)
 Secretary Alan Barasch (994-1243)
 Librarian Kathy Sanders (872-0200)
 Buxs Banker Roger Grider

© 2001 Greater St. Louis Stamp Club, Inc
 GSLSC is a 501(3)c Non-profit organization

Shows Calendar

Fenton Schedule

July 14th September 8th
 August 11th October 13th
 November 10th December 8th

APS National Convention Chicago, Aug 24-27
 StampFest Crestwood, September 1-2

StampFest

We are already planning the fall stamp show. Dealer contracts are already out and we are preparing for exhibits.

The show will again be held at the Crestwood Community Center on Labor Day weekend (Saturday and Sunday).

If you are interested in exhibiting, the St Louis Philatelic Exhibitors Self-Help Group (STLPESHG) is the place to start. Call Alan Barasch for meeting places and times.

Auction List

As usual, the auction list follows. Remember the ground rules. Everyone may add items to the auction but must be submitted to **Joe Conti** in time for him to write up the list (your editor wrote him a program to speed up the process) and get it to the editor. At the meeting, no item will be presented for auction unless it has an open bid.

Membership Material Auction June, 2001

06/13/2001

Lot #	Country	Scott No.	Cat \$	Description	Min Bid	Owner #
1	USA	?	\$1.00	NOBEL PRIZE CENTENNIAL FDC, , , Cover,	0.60	306
2	USA	2482	\$2.50	PAIR (JOINED), U, VF,	0.50	306
3	USA	O-72	\$4.00	, U, Ave,	1.20	321
4	USA	O-74	\$1.50	CORK CANCEL, U, Ave,	0.75	321
5	USA	O-38	\$12.50	CORK CANCEL, U, VF,	7.50	321
6	USA	209	\$1.75	DESIGN CUT INTO @ R&B, U, Ave,	0.40	CLUB
7	USA	O-75	\$3.50	U, AVG	1.00	321
8	USA	C-76	\$5.00	FDC	2.00	321
9	USA	UX-97	\$1.75	FDC, , ,	0.50	321A
10	USA	1799	\$8.45	STRIP OF 20 INCLUDES PB, M, ,	3.30	321A
11	USA	494	\$0.60	U, AVG	0.20	CLUB
12	NORWAY	19	\$25.00	U, VF	5.00	254
13	Argentina	825	\$7.00	MINT, F-VF, , ,	2.00	254
14	Denmark	8	\$85.00	SMALL TEAR, FRAME DESIGN CUT INTO, U, , 1061,1063,1065,1069,1073,1074,UNUSED,VF,	3.00	254
15	USA	VARIOUS	\$4.20	HINGE REMNANT	0.90	321
16	USA	VARIOUS	?	32 COVERS	20.00	288
17	USA	1940	\$11.30	STRIP OF 20 INCLUDES PB, M, ,	4.20	321A
18	USA	493	\$2.00	U, AVG	0.60	CLUB
19	USA	492	\$0.50	F, JOINED PR, U, ,	0.15	CLUB
20	USA	453	\$7.50	F, JOINED PR, U, ,	1.90	CLUB
21	USA	496	\$1.00	BARELY F, U, ,	0.30	CLUB
22	USA	1742a	\$7.50	BK-135, M, VF,	3.50	321A
23	Norway	18	\$11.00	F-VF, U, ,	2.50	254
24	USA	612	\$16.00	M, HINGED, HORIZONTAL CREASE, , ,	2.00	254
25	USA	C-49/50	\$8.75	MNH, VF	2.00	254
26	USA	VARIOUS	\$13.70	2108,2165,2166,2210,& 2400 PB, M, VF,	3.89	254



Greater Saint Louis Stamp Club

Perf dispatch

Volume VII, Number 7



August, 2001

Where Parkway Central High School

When 4th Monday each month at 8 PM

If you have old (really old) newsletters or other club archives, let Gary know what you have for an exhibit.

Adult Meeting

The program this month is an introduction to Latin America presented by Jim Hunt. Jim is a member of the Webster Groves Stamp Club and the Exhibitors' Group.

As always, an auction follows the program.

Breakfast Club Meeting

The Breakfast group meets the 2nd Monday of the month. The next meeting is September 10th at Le Peep Restaurant in Chesterfield.

Future Meetings

The meeting in September will consist of a "Silent Auction." Our auction administrator tells us that members can submit lots in the usual way so that they are included in the list in the newsletter. Then rather than conducting a voice bid, there will be only the chance to look at them on the floor.

Got an idea for a meeting program? Want to present yourself but have never been asked? Mention the topic to one of our officers to be added to the schedule.

2001 SCHEDULE

August 27 Intro to Latin America
Sept 1-2 StampFest
Sept 24 Silent Auction
October 22 Missouri Postal History
November 26 Elections & Auction Bux Sale
December 10 Holiday Party

Important Notice

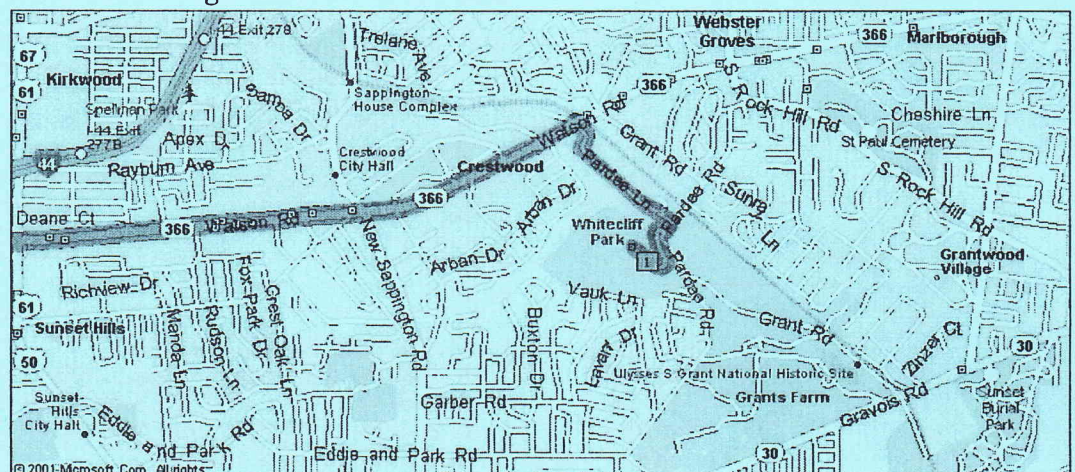
Calls are going out for HELP at StampFest. Won't you heed the call!

GSLSC Anniversary

This year, your Greater St Louis Stamp Club celebrates its 25th Anniversary. At StampFest in September, we would like to bring back all the old members; especially officers for one big celebration.

We found a list of former officers and are contacting them to attend the BBQ on Saturday night.

<http://www.MoPhil.org/gslsc.htm>



Officers - 2001

President Tom Minor (645-4451)
 Vice-President Joe Conti (838-6342)
 Treasurer Gary Hendren (576-5261)
 Secretary Alan Barasch (994-1243)
 Librarian Kathy Sanders (872-0200)
 Buxs Banker Roger Grider

© 2001 Greater St. Louis Stamp Club, Inc
 GSLSC is a 501(3)c Non-profit organization

Shows Calendar

Fenton Schedule

September 8th
 October 13th
 November 10th
 December 8th

Other Shows

APS National Convention Chicago, Aug 24-27
 StampFest Crestwood, September 1-2
 Stamp & Picture Postcard Show & Sale
 Mountain Home, AR, Sept 8-9
 SIRPEX 2001 Carbondale IL, Sept 15-16

Auction List

As usual, the auction list follows. Remember the ground rules. Everyone may add items to the auction but must be submitted to **Joe Conti** in time for him to write up the list (your editor wrote him a program to speed up the process) and get it to the editor. At the meeting, no item will be presented for auction unless it has an open bid.

StampFest

You should have already received your invitation to StampFest. Volunteers are needed to man the check-in table, help in the snack bar, and setup/takedown.

The show will again be held at the Crestwood Community Center on Labor Day weekend (Saturday and Sunday).



Membership Material Auction August, 2002

Lot#	Country	Cat#	Cat \$	Desc	Min	Owner
1	ALGERIA	C-11	\$14.00	M,VF	3	254
2	Germany	4	\$6.00	, U, VF	2.00	254
3	US	509	\$21.00	MNH, OC (NARROW RIGHT MARGIN)	4.00	254
4	US	328	\$27.50	M,OC (PERFS CUT AT TOP), ,	3.00	254
5	US	325	\$90.00	M, NG, 1 SHORT TOOTH, OC (PERFS TOUCH BOTTOM FRAME), ,	8.00	254
6	US	VETS	\$EST. 1.50	HONORING VETS FDC	0.75	306
7	US	NEW	\$EST. 1.50	PEANUTS FDC, ,	0.90	306
8	US	3439/43	\$EST.5.00	5 DIFF. COVERS, ,	2.75	306
9	US	509	\$3.65	U, VF, ,	0.70	CLUB
10	US	511	\$5.60	U, VF, ,	1.10	CLUB
11	US	513	\$7.00	U, F, ,	1.40	CLUB
12	US	516	\$1.00	U, F, ,	0.20	CLUB
13	US	517	\$1.50	U, VF, ,	0.30	CLUB
14	US	CATALOG	EST.5.00	1990 DURLAND PB CATALOG	1.00	321
15	US	2165/2245	\$11.80	MNH PB, 2165,2166,2210,2244,&2245, ,	2.45	321
16	US	1031/40	\$4.80	MNH BLOX OF 4, 1031,1035,1039,&1040	1.00	321
17	US	2023/2048	\$22.00	MNH PB 2023,2027/30,2063,2045/48, ,	4.50	321
18	US	1691/94	\$EST. 10.00	MNH PB OF 12 OF 1691/94, ,	2.00	321



Greater Saint Louis Stamp Club

Perf-dispatch

Volume VII, Number 8



September, 2001

Where Parkway Central High School

When 4th Monday each month at 8 PM

Adult Meeting

In September, our entire program is a "Silent Auction." The attached list has over 100 items. We are going to go around looking at items, write in our bids and at the end of the evening collect funds from successful bidders.

There will be no floor bids.

A note from our auctioneer: Try to have cash rather than checks in order that payouts to owners are expedited.

Juniors

The junior club will meet at 6:45; immediately preceding the Adult meeting.

Breakfast Club Meeting

The Breakfast group meets the 2nd Monday of the month. The next meeting is October 8th at Le Peep Restaurant in Chesterfield.

2001 SCHEDULE

Sept 24 Silent Auction
October 22 Missouri Postal History
November 26 Elections & Auction Bux Sale
December 10 Holiday Party
January 28, 2002 Accepting Volunteers

Future Meetings

Got an idea for a meeting program? Want to present yourself but have never been asked? Mention the topic to one of our officers to be added to the schedule.

StampFest Wrap-up

All went well with the recent Stampfest. 22 dealers showed their wares very successfully. More than 300 people attended the two-day affair, the best in at least 3 years. Almost 50 members, dealers and friends enjoyed a nice meal to end the day on Saturday. A heartfelt thanks goes to those members who contributed in any way to the financial success of the show.

Awards

StampFest was fortunate this year to get two judges for the price of one. **Jim & Jeanette Adams** of Indianapolis served as our jury this year.

Members of the St Louis Philatelic Exhibitors vied for our awards. There were 2 classes, single frame and multi-frame exhibits.

Multi-frame

Best of Class

Chile: Unforseen Postal, Fiscal, Telegraph & Stampless.....James Hunt
Gold

Chile: Unforseen Postal, Fiscal, Telegraph & Stampless.....James Hunt
Poster Stamps: Selling It Tom Minor
Vermeil

Down the Tube David Straight
Falkland Islands 1878-1902 Alan Barasch
Silver

Postmarks of Missouri Gary Hendren
Silver-Bronze

Mathematics on Stamps Gary Hendren
Continued...

Single Frame Exhibits

Best of Class

US Documentary Revenues of 1917
.....Don Woodworth

Vermeil

St Louis Pioneer Airmail Flights..... Elizabeth Nettles
Silver

US Documentary Revenues of 1917
.....Don Woodworth
Worcester, MA: Advertising Covers .. David Simmons

Our awards consisted of an oversized
Budweiser bottle and a Budweiser cooler.

<http://www.MoPhil.org/gslsc.htm>

Officers - 2001

President Tom Minor (645-4451)
Vice-President Joe Conti (838-6342)
Treasurer Gary Hendren (576-5261)
Secretary Alan Barasch (994-1243)
Librarian Kathy Sanders (872-0200)
Buxs Banker Roger Grider

© 2001 Greater St. Louis Stamp Club, Inc
GSLSC is a 501(3)c Non-profit organization

Thank You, Gary!

You may not realize it but we probably would not have the successful show that we do without the hard work and perseverance of **Gary Hendren**.

Starting almost immediately after each show, Gary begins working on the next one. He contacts the dealers, arranges the facilities with the Crestwood Park & Recreation, mails the postcards and contacts the media (and other stuff besides).

We would love to give Gary some help. This is too big a burden to put on one person.

In addition to staging StampFest each year, Gary has single-handed kept the youth club going. Though it is down to 2 children, Gary visits with them regularly.

What more can I say, thank you Gary for your service to the GSLSC!

Auction List

As usual, the auction list follows. Remember the ground rules. Everyone may add items to the auction but must be submitted to **Joe Conti** in time for him to write up the list (your editor wrote him a program to speed up the process) and get it to the editor. At the meeting, no item will be presented for auction unless it has an open bid.

Shows Calendar

Fenton Schedule

October 13th
November 10th
December 8th

Other Shows

ST. CHARLES FALL STAMP SHOW

October 26 & 27, 2001

Holiday Inn

4221 S. Outer Road

St Peters

Friday.....10-6
Saturday.....9-4

See flyer enclosed with newsletter

Address Changes?

Address changes or other changes in status should be sent to **Gary Hendren**, 12737 Glenage, Maryland Heights 63043.

Although Alan writes the newsletter and mails it, Gary puts labels on the envelopes and stamps them.

APS Convention

Several of our members had exhibits at the recent APS StampShow including:

Tom MinorGold & Top in Cinderella Class
David Straight..... Gold
Two other St Louis exhibitors were also showing and brought back top honors.



Greater Saint Louis Stamp Club

P E R F D I S P A T C H

Volume VII, Number 8

October, 2001

Where Parkway Central High School

When 4th Monday each month at 8 PM

Adult Meeting

In October, we have an exciting guest speak, **Bob Schultz** who will be talking to us about Missouri Postal History. Bob wrote the book on

Breakfast Club Meeting

The Breakfast group meets the 2nd Monday of the month. The next meeting is **November 12th** at Le Peep Restaurant in Chesterfield.

2001 SCHEDULE

October 22 Missouri Postal History
November 26 Elections & Auction Bux Sale
December 10 Holiday Party
January 28, 2002..... Accepting Volunteers

Future Meetings

Got an idea for a meeting program? Want to present a program yourself but have never been asked? Mention the topic to one of our officers to be added to the schedule.

<http://www.MoPhil.org/gslsc.htm>

Officers - 2001

President Tom Minor (645-4451)
Vice-President Joe Conti (838-6342)
Treasurer Gary Hendren (576-5261)
Secretary Alan Barasch (994-1243)
Librarian Kathy Sanders (872-0200)
Buxs Banker Roger Grider

© 2001 Greater St. Louis Stamp Club, Inc
GSLSC is a 501(3)c Non-profit organization

Auction List

As usual, the auction list follows. Remember the ground rules. Everyone may add items to the auction but must be submitted to **Joe Conti** in time for him to write up the list (your editor wrote him a program to speed up the process) and get it to the editor. At the meeting, no item will be presented for auction unless it has an open bid.

Remember, items for the auction list should be submitted to Joe Conti by the 2nd Monday of the month.

Shows Calendar

Fenton Schedule

September 8th
October 13th
November 10th
December 8th

Other Shows



Membership Material Auction
October, 2001

10/16/2001

Lot #	Country	Scott No.	Cat \$	Description	Min Bid	Owner #
1	AUSTRALIA	?	?	MODERN AUSTRALIA ON PIECE, , ,	0.50	CLUB
2	SAMOA	15,127-9	?	MH	1.00	25
3	CANADA PROVINCES		?	44 MH & U	5.00	25
4	BELGIUM&COLONIES			220+ U	10.00	25
5	ICELAND			46 U&1 MH GREENLAND	4.00	25
6	ECUADOR			270+ U	10.00	25
7	VIET NAM			83 U	6.00	236
8	ETHIOPIA			31 MH &U	3.00	236
9	SIAM/THILAND			100+ U	8.00	236
10	VIET NAM			22 U & 4 LAOS	1.00	236
11	BRIT COLONIES			29 MOSTLY USED	3.00	236
12	AUSTRIA	648B/C63	\$70+	MINT	30.00	23
13	USA	575	10.00	U IMPERF PR	5.00	23
14	USA	575	30.00	MNH IMPERF BLOCK 4/FULL MARGINS	15.00	23
15	USA	576	7.00	MH BOT ARROW BK OF 4	3.50	23
16	USA	577	5.25	U IMPERF LINE BL 4	2.50	23
17	GREECE			ON COVER	1.00	272
18	ITALY	633,783,788	13+	MNH	3.00	272
19	USA	3033	4.00	MNH PL STRIP OF 20	0.50	272
20	USA	C-129	16.00	MNH PL STRIP OF 20	7.00	272
21	USA	C-127	18.00	MNH PL STRIP OF 20	8.00	272
22	USA	398	20.00	M, V-VF	4.50	254
23	MADAGASCAR	C-56	22.50	M,VF	6.00	254
24	JAPAN	361	35.00	M VF, NG AS ISSUED	9.00	254
25	ITALY	44	7.25	U, F-VF	2.00	254
26	RHODESIA	222	21.00	MNH, VF	6.00	254
27	AUSTRALIA	47	20.00	M, VF	8.00	254
28	USA			22 CENT JOINT ISSUE W/FRANCE, INCLUDES BLK/4 BOTH COUNTRIES	2.00	55
29	USA	BK-152	6.00	COMPLETE MNH BOOKLET	3.30	321
30	USA	BKC-23	3.25	COMPLETE MNH BOOKLET	1.50	321
31	USA	BK-162	10.00	COMPLETE MNH BOOKLET	4.85	321



Greater Saint Louis Stamp Club

per f d i s p a t c h

Volume VII, Number 10



November, 2001

Where Parkway Central High School

When 4th Monday each month at 8 PM
No meeting in December or July

Adult Meeting

This month, our program consists of our annual Auction Bux sale and election of new officers.

Breakfast Club Meeting

The Breakfast group does NOT meet in December because the Holiday Party is that evening. Join us on January 14th at **Le Peep Restaurant** in Chesterfield at 8:30 AM.

2001 SCHEDULE

November 26 Elections & Auction Bux Sale

• December 10 Holiday Party

January 28, 2002 ... TBA / Canada's Maritimes?

Future Meetings

Got an idea for a meeting program? Want to present a program yourself but have never been asked? Mention the topic to one of our officers to be added to the schedule.

<http://www.MoPhil.org/gslsc.htm>

Officers - 2001

President Tom Minor (645-4451)
Vice-President Joe Conti (838-6342)
Treasurer Gary Hendren (576-5261)
Secretary Alan Barasch (994-1243)
Librarian Kathy Sanders (872-0200)
Buxs Banker Roger Grider

© 2001 Greater St. Louis Stamp Club, Inc
GSLSC is a 501(3)c Non-profit organization

Auction List

Remember, items for the auction list should be submitted to **Joe Conti** by the 2nd Monday of the month.

Auction Bux

Remember all those Auction Bux you have been accumulating all year? Here is your chance for them to be worth something.

We have an interesting array of lots (lists enclosed) that have been donated.

In case you have not accumulated many bux this year, we begin the meeting with a philatelic trivia contest with mucho bux prizes.

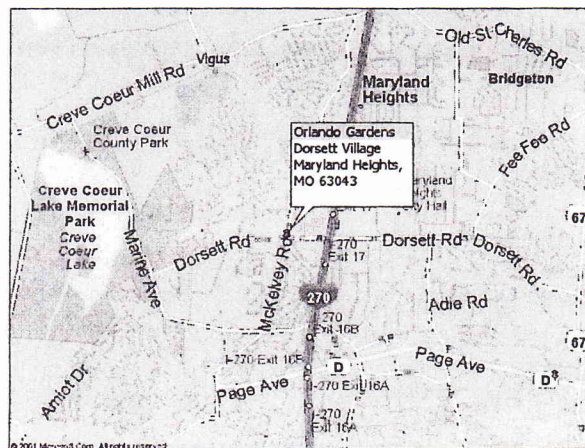
Please note that if you have Auction Bux from previous years, they are worth 1/2 of their face value.

Come early and pick from 5¢ box...remainder to be sold in Auction.

Holiday Party

Elsewhere in this bulletin is a coupon to RSVP for our Holiday Party. We promise it will not snow on the date again this year.

Please plan to attend with your family!



Please

refer to attachments for the

Auction Bux

Sale

and our

Holiday Party