

2006-01-perf-dispatch	2
2006-02-perf-dispatch	4
2006-03-perf-dispatch	6
2006-04-perf-dispatch	8
2006-05-perf-dispatch	10
2006-06-07-perf-dispatch	12
2006-08-perf-dispatch	14
2006-09-perf-dispatch	17
2006-10-perf-dispatch	20



Greater Saint Louis Stamp Club

Perf Dispatch

Volume XII, Number 1



January, 2006

Where Parkway Central High School
Woodsmill Road

When 4th Monday each month at 8 PM

January Meeting

On January 23, **Hollister Smith** will be speaking to us about the 37¢ Flag Stamp. Hollister has accumulated more than 25 varieties of this stamp including coils, booklets, and singles.

Breakfast Club Meeting

The Breakfast group meets the 2nd Monday of the month. The next meeting is **February 13th** at Steak 'n Shake in Chesterfield at 8:30 AM.

2006 Schedule

January 23, 2006..... 37¢ Flag Stamp
February 24-26St Louis Stamp Expo
February 27 Seminar on Scanning
March 27 Washington-Franklin Heads
April 24 TBA
May 22St. Louis County Postmarks
June 26 Impressions of Washington 2006
August 28Clothesline Exhibits
September 3-4 StampFest – Kirkwood
September 25 Swap Meet
October 23..... TBA – David Straight

Saint Louis Stamp Expo 2006

Expo will be upon us before the February GSLSC meeting. Most committees need volunteers to check badges, help with set-up and take-down, and assist dealer check-in.

GSLSC has not taken a specific day to work this year. The Friday of the show is children's day and we understand that 5 schools are bringing a total of 265 students. Lots of help is needed to keep them moving.

Saturday morning, **David Straight** and **Gary Hendren** will be training Boy Scouts for the stamp collecting merit badge.

A grouping of Latin American societies are holding their annual meetings at Expo. These include:

- Chile Specialist Association
- Cuban Philatelic Society of America
- Nicaragua Study Group
- International Society of Guatemala Collectors

Dues Time

Name				\$5 - Single
Street				\$6 - Family
City State				
Dues are expected by 02/01/2006 to: Gary Hendren, 12737 Glenage Drive, Maryland Heights, MO 63043 Check your envelope – last year there was some confusion and many paid for 2 years. If the "Thru" is 06 or higher, you are already covered!				

Officers – 2006

PresidentTom Minor (314-645-4451)
 Vice-President Joe Conti (314-838-6342)
 Treasurer Gary Hendren (314-576-5261)
 Secretary Alan Barasch (314-994-1243)
 Librarian Alan Barasch
 Buys Banker Gene Stewart
 Dispatch Editor Alan Barasch

© 2006 Greater St. Louis Stamp Club, Inc
 GSLSC is a Non-profit organization

Important Announcement

If there is a speaker that you would like us to get, perhaps you can facilitate getting him.

<http://www.MoPhil.org/GSLSC.htm>

Auction

The list is below. Remember – a lot will not open on the floor unless a bid is placed on it during the “look” period.

Lots should be turned in to **Joe Conti**
 (papaconti@aol.com) by the time of the breakfast meeting.

Lot #	Country	Scott No.	Cat \$	Description	Min Bid	Owner #
1	United States	63	\$32.50	u,oc(perfs cut L frame)	2.50	254
2	United States	216	\$14.00	u.f-vf	3.00	254
3	United States	219	\$27.50	m,oc(perfs touch T frame)	4.00	254
4	Brazil	28	\$90.00	u,frame cut into @R& B	6.00	254
5	South Africa	26pr	\$14.50	u, rather heavy cancel	2.00	254
6	Portugal	57	\$22.50	m,vf	6.00	254
7	Ascension	---	---	FDC	0.25	22
8	USA	---	---	fdc, Santa Claus Ind, 1939 Xmas seal	0.25	22
9	USA	---	---	9 fdc	1.50	22
10	USA	---	---	6 St Louis pictorial cancels	1.50	22
11	USA	---	---	8 MDC ,I Mound city stamp pictorial covers	2.00	22
12	USA	---	1.86 face	1971 year set	2.00	library
13	USA	---	2.27 face	1972 year set	2.50	library
14	USA	---	2.80 face	1973 year set	3.00	library
15	USA	---	3.70 face	1978 year set	4.00	library
16	USA	---	4.30 face	1979 year set	4.50	library
17	Ireland	misc	min 89.00	over 150 all diff used Ireland	7.50	321
18	France	misc	min 9.00	45 diff u “Marianne”	2.70	321
19	Russia	1651/54	4.55	u, war medal series	2.00	321
20	USA	1638/82	\$15.00	pane, m,vf	7.00	23
21	USA	---	---	Harris Senior Statesmen Binder	0.05	23
22	USA	---	---	National album pages/some clear mounts	1.00	23
23	USA	---	---	24 pg stock book/110 cut squares	5.00	23
24	USA	---	---	32 pg padded stock book	3.00	23
25	Argentina	---	min 7.40	37 all diff(identified)overprints	1.50	321
26	USA	713	3.75	mnh,f-vf	1.50	378
27	USA	712	\$0.35	mnh,f-vf	0.10	378
28	USA	c-46	\$22.50	mnh,pb,f-vf	10.00	378
29	USA	899/901	\$1.50	mnh,pb f-vf	0.60	107
30	USA	807a	\$8.50	mnh booklet pane	2.00	107
31	USA	1510c	1.65	mnh booklet pane	1.00	107
32	USDA	1254/7	\$1.00	mnh bl of four	0.30	107
33	USA	1059	\$3.00	mnh coil pr	0.50	107
34	USA	1686/89	\$19.00	mnh s/s	5.00	107
35	Canada			Album with many stamps to 2002	100.00	HVJ



Greater Saint Louis Stamp Club Perf Dispatch

Volume XII, Number 2

February, 2006

Where Parkway Central High School
Woodsmill Road

When 4th Monday each month at 8 PM

February Meeting

At the February meeting, **Alan Barasch** will demonstrate scanning stamps with a scanner and computer. He will also show how to delete colors to enhance a postmark.

Breakfast Club Meeting

The Breakfast group meets the 2nd Monday of the month. The next meeting is **March 13th** at Steak 'n Shake in Chesterfield at 8:30 AM.

2006 Schedule

February 27 Seminar on Scanning
March 27 Washington-Franklin Heads
April 24 TBA
May 22 St. Louis County Postmarks
June 26 Impressions of Washington 2006
August 28 Clothesline Exhibits
September 3-4 StampFest - Kirkwood
September 25 Swap Meet
October 23 TBA - David Straight

Saint Louis Stamp Expo 2006

The Friday of the show is children's day and we understand that 5 schools are bringing a total of 215 students. Lots of help is needed to keep them moving.

The theme of the show is Latin American Culture.

Saturday morning, **David Straight** and **Gary Hendren** will be training Boy Scouts for the stamp collecting merit badge.

More info on the web at
<http://expo.mophil.org>

A group of Latin American societies are holding their annual meetings at Expo. These include:

- Chile Specialist Association
- Cuban Philatelic Society of America
- Nicaragua Study Group
- International Society of Guatemala Collectors



First Days

There will be a first day ceremony for 3 International Airmail rate stamps on Friday. These are:

- Bryce Canyon, 63¢
- Yosemite, 84¢
- Great Smokey Mountains, 75¢

Dues Time

Name	Mark Melliere		\$5 - Single
Street	1845 Summitview Dr		\$6 - Family
City State	St Charles	MO 63303	Email: mmelliere@charternet

Dues are expected by 03/01/2006 to (or at the meeting):
Gary Hendren, 12737 Glenage Drive, Maryland Heights, MO 63043

Officers – 2006

PresidentTom Minor (314-645-4451)
 Vice-President Joe Conti (314-838-6342)
 Treasurer Gary Hendren (314-576-5261)
 Secretary Alan Barasch (314-994-1243)
 Librarian Alan Barasch
 Buxs Banker Gene Stewart
 Dispatch Editor Alan Barasch

© 2006 Greater St. Louis Stamp Club, Inc
 GSLSC is a 501(3)c Non-profit organization

Auction

The list is below. Remember – a lot will not open on the floor unless a bid is placed on it during the look period.

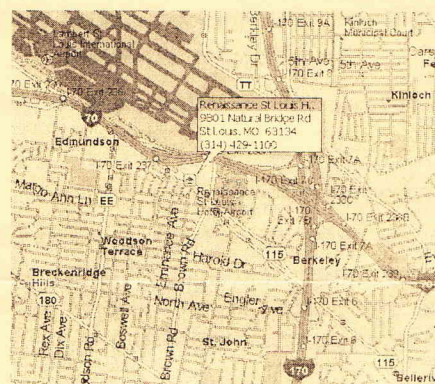
Lots should be turned in to **Joe Conti** (papaconti@aol.com) by the time of the breakfast meeting.

Important Announcement

If there is a speaker that you would like us to get, perhaps you can facilitate getting him.

<http://www.MoPhil.org/GSLSC.htm>

Follow links on this page for information about other local clubs, shows, and maps to the shows.



Lot #	Country	Scott No.	Cat \$	Description	Min Bid	Owner #
1	USA	230	\$22.50	m,vf, , ,	4.00	254
2	USA	E-1	\$45.00	u vf, tiny tear, , ,	8.00	254
3	USA	1037	\$0.80	blk of 4,mnh, , ,	0.25	107
4	USA	1415/18	\$3.25	mnh pb 8, , ,	1.00	107
5	USA	2130/2128	\$0.90	2 pr, mnh	0.60	107
6	USA	1613/15	\$0.68	2 pr, mnh	0.30	107
7	USA	1311	\$0.20	mnh s/s	0.12	107
8	USA	948	\$0.55	mnh s/s	0.20	107
9	BRASIL	c-12	\$7.50	m,vf, , ,	2.00	254
10	GR Britain	144	\$4.00	m,f-vf,regummed	2.00	254
11	Spain	63	\$9.00	u,vf,corner thin	2.00	254
12	Portugal	59	\$35.00	m,f-vf,ng	4.00	254
13	Australia	92a	\$14.50	m,ng,oc(perfs cut r frame)	2.00	254
14	-----	----	\$10.80	4-#2 glassine red box holders	3.00	340
15	G Britain	126	\$140.00	u,vf	15.00	340
16	-----	----	????	Linns 19th century Stamp Facts	7.50	331
17	USA	----	????	Counterfit Kansas-Nebraska ovpts-APS Handbook Series	3.00	331
18	USA	----	????	same as item 18	3.00	331
19	USA	----	????	Airmail Special Delivery Stamps of USA--BIA Handbook	4.50	331



Greater Saint Louis Stamp Club Perf Dispatch

Volume XII, Number 3



March, 2006

Where Parkway Central High School
Woodsmill Road

When 4th Monday each month at 8 PM

March Meeting

Special Day; Special Time;
Special Place

Like so many times before, Spring Break in the Parkway School District has stomped on our plans. When we realized this, your officers swung into action to find an alternative location for the meeting. Nothing could be found.

The meeting will be combined with that of the Mound City Stamp Club on **Monday, April 3rd at 7:30 PM** at the **St. Louis County Library** on Lindbergh south of Clayton Road.

T. G. Rehkop will present our previously scheduled program on the **Washington-Franklin Heads**. T.G. attended Stamp Camp several years ago on the W-F topic and has many useful identifying aids to share with us.

Mound City has a slide show scheduled, since we cannot hold an auction, we may do both presentations.

Breakfast Club Meeting

The Breakfast group meets the 2nd Monday of the month. The next meeting is **April 10th** at Steak 'n Shake in Chesterfield at 8:30 AM.

2006 Schedule

~~March 27~~ Moved to April 3
April 3 Washington-Franklin Heads
April 24 TBA
May 22 St. Louis County Postmarks
June 26 Impressions of Washington 2006
August 28 Clothesline Exhibits
September ?????? StampFest – Creve Coeur
September 25 Swap Meet
October 23 TBA – David Straight

A World of Shows

Springtime is here! It may not feel like it out there (I am watching the snow falling while typing).

Springtime means shows. Washington 2006 will run May 27 through June 3.

The St Louis Bears (exhibitors) will be convening in Indianapolis at INDYPEX July 7-9.

St. Louis County Library
April 3rd
7:30 PM

APS StampShow will be in Chicago again this year on August 24-27.

Somewhere in all of this, we want to find time to do St. Louis StampFest. Do you realize that it is now the second largest show in Missouri?



Officers – 2006

President	Tom Minor (314-645-4451)
Vice-President	Joe Conti (314-838-6342)
Treasurer	Gary Hendren (314-576-5261)
Secretary	Alan Barasch (314-994-1243)
Librarian	Alan Barasch
Buxs Banker	Gene Stewart
Dispatch Editor	Alan Barasch

© 2006 Greater St. Louis Stamp Club, Inc
GSLSC is a Non-profit organization registered with
the State of Missouri

Auction

The list is below. Remember – a lot will not open on the floor unless a bid is placed on it during the look period.

Lots should be turned in to **Joe Conti** (papaconti@sbcglobal.net) by the time of the breakfast meeting.

Important Announcement

If there is a speaker that you would like us to get, perhaps you can facilitate getting him.

<http://www.MoPhil.org/GSLSC.htm>

Follow links on this page for information about other local clubs, shows, and maps to the shows.

Did you know that our web page now includes back issues of the Perf-Dispatch in PDF format?

Auction

There is no auction this month since we are meeting at the library. We cannot hold money-making activities at the Library.





Greater Saint Louis Stamp Club Perf Dispatch

Volume XII, Number 4



April, 2006

Where Parkway Central High School
Woodsmill Road

When 4th Monday each month at 8 PM

April Meeting

Alan Barasch will present a look at the Postal History of McDonald County. Did you know that McDonald County seceded from the State of Missouri in 1961?

When we were beginning the Missouri Postal History Society, Alan was drafted to build a website. Not being a Missouri native, he was not then collecting Show-Me state postal history. He picked McDonald County since he had spent time there.

Breakfast Club Meeting

The Breakfast group meets the 2nd Monday of the month. The next meeting is **May 8th** at Steak 'n Shake in Chesterfield at 8:30 AM.

2006 Schedule

April 24 McDonald County
May 22 St. Louis County Postmarks
June 26 Impressions of Washington 2006
August 28 Clothesline Exhibits
September ?????? StampFest – Creve Coeur
September 25 Swap Meet
October 23 TBA – David Straight

A World of Shows

Washington 2006 will run May 27 through June 3.

Enclosed with this newsletter is the flyer for the St. Charles Spring Show (Nancy's show) to be held Friday and Saturday, April 28 & 29 at the Heart of St. Charles Banquet Center. The Center is at the intersection of I-70 and 5th Street (the round glass building you see as you cross the river),

The St Louis Bears (exhibitors) will be convening in Indianapolis at INDYPEX July 7-9.

APS StampShow will be in Chicago again this year on August 24-27.

Somewhere in all of this, we will find time to do St. Louis StampFest. Do you realize that it is now the second largest show in Missouri?

Going to Washington? Looking for a roommate or someone to share expenses?

Our Thanks

To **Myrtle Butts** (# 68) for her donation of club newsletters dating back to the late 1970s. The run is nearly complete from 1980 to the present. These will be available for viewing at the next meeting.

Miscellaneous

Anyone needing mint sheets, FDCs, First Day souvenir pages, etc. please check with **Gary Hendren** to see what is available.



Officers - 2006

President Tom Minor (314-645-4451)
 Vice-President..... Joe Conti (314-838-6342)
 Treasurer Gary Hendren (314-576-5261)
 Secretary Alan Barasch (314-994-1243)
 Librarian Alan Barasch
 Buys Banker Gene Stewart
 Dispatch Editor Alan Barasch

© 2006 Greater St. Louis Stamp Club, Inc
 GSLSC is a Non-profit organization registered with
 the State of Missouri

Auction

The list is below. Remember – a lot will not open on the floor unless a bid is placed on it during the look period.

Lots should be turned in to **Joe Conti** (papaconti@aol.com) by the time of the breakfast meeting.

Important Announcement

If there is a speaker that you would like us to get, perhaps you can facilitate getting him.

<http://www.MoPhil.org/GSLSC.htm>

Follow links on this page for information about other local clubs, shows, and maps to the shows.

Did you know that our web page now includes back issues of the Perf-Dispatch in PDF format?

Lot #	Country	Scott No.	Cat \$	Description	Min Bid	Owner #
1	CANADA	215	\$2.00	U,F	0.70	488
2	WORLD		\$20.00	album/300 stamps	2.00	340
3	USA	325	\$90.00	mh,oc(perfs cutleft frame)	3.00	340
4	USA	660	\$4.50	mh,oc(perfs cut lower frame)	0.75	340
5	world		\$80.00	album/434 stamps	8.00	340
6	USA	68A	\$52.50	DK GREEN, LGT CORK CANCEL,OC(PERFS CUT @T), U, ,	6.00	254
7	USA	148	\$25.00	U,ROSE,OC(PERFS CUT @T), ,	3.00	254
8	United States	225	\$14.00	U,F-VF,CORNER THIN, , ,	2.00	254
	WURTEMBERG	17	\$40.00	U,THIN,TEAR,FRAME CUT INTO T & R	2.00	254
10	UPPER SILESIA	15-31	\$10.30	U,VF,15 & 25 MINT, , ,	3.00	254
11	Portugal	31	\$85.00	U,VF,BROWN SPOTS,FEW BLUNTED TEETH, , ,	9.00	254
12	Great Britain	78	\$8.00	U, VF, , ,	2.00	254
13	RHOD & NYASALAND	154	\$7.00	U,VF, , ,	2.00	254
14	USA	1056	\$3.50	MNH LINE PR, , ,	0.50	107
15	USA	1054/55/57 /58	\$1.00	MNH COIL PRS, , ,	0.30	107
16	USA	634D	\$2.50	MNH BOOKLET PANE, , ,	1.00	107
17	USA	1893A	\$3.25	COMPLETE BOOKLET, , ,	1.00	107
18	USA	E-22	\$5.50	MNH PLATE BLOCK, , Damaged,	2.50	107
19	USA	1543/46	\$5.00 FACE	MNH SHEET, , ,	5.00	23
20	USA	1565/68	\$5.00 FACE	MNH SHEET, , ,	5.00	23
21	USA	1480/83	\$4.00 FACE	MNH SHEET, , ,	4.00	23
22	USA	1633/82	\$6.50 FACE	MNH SHEET-STATE FLAGS, , ,	7.00	23
23	USA	1569/70	\$2.40 FACE	MNH SHEET-APOLLO/SOUYEZ, , ,	2.00	23
24	USA	RW-27	\$80.00	MNH DUCK, , ,	25.00	107
25	USA	RW-29	\$95.00	MNH DUCK, , ,	30.00	107



Greater Saint Louis Stamp Club Perf Dispatch

Volume XII, Number 5



May, 2006

Where Parkway Central High School
Woodsmill Road

When 4th Monday each month at 8 PM

May Meeting

Bob Schultz will present a look at the Post Offices of St. Louis County.

According to your editor's records, there have been 128 post offices at some time in the county. Fortunately, Bob will not try to show us covers from all of them at once.

Breakfast Club Meeting

The Breakfast group meets the 2nd Monday of the month. The next meeting is **June 12th** at Steak 'n Shake in Chesterfield at 8:30 AM.

2006 Schedule

May 22 St. Louis County Postmarks
May 27-June 3 Washington 2006
June 26 Impressions of Washington 2006

JUST informed that the school will be closed for repairs in June. Watch for newsletter for alternate meeting place!

August 28 Clothesline Exhibits
????? StampFest – Creve Coeur
September 25 Swap Meet
October 23 TBA – David Straight

Miscellaneous



Anyone that wants **Gary Hendren** to pick up any stamps at Washington 2006 should make it known at the meeting or give him a call at 314-576-5261 before 5/26. The club will provide for the initial outlay for the items for members.

It appears that there will be **4** US stamp releases at

the show in addition to the Migratory Birds issues. Marshall Islands, Israel, United Nations, and Bermuda will also have first days at the show.

Not one, but two commemorative postmarks will debut each day of the show, courtesy of the U.S. Postal Service. Both a special day cancel and an associated theme cancel will be available daily.

Hand-back service will be available each day for that day's cancels. Otherwise collectors may drop self-addressed envelopes or postcards in slots for the postmark of their choice for return through the mails.

Prolific stamp artist Chris Calle has agreed to design a set of eight cacheted envelopes in coordination with the cancels. Unserved envelopes are \$1 each, and serviced are \$3 each, or a set of 8 for \$20 while supplies last at the show sold by the American Philatelic Society.

If you are at the show, look for the one-frame exhibits put up by the convening societies. Your editor slapped together the frame for the Falkland Islands Philatelic Study Group.



In Other News

As we were going to press, we were informed of the death of **Clyde Jennings** on May 17th. If you ever met Clyde, you will never forget him.

Clyde was known for among other things his "Half a" Collection; ½¢ US Stamps. I remember him for his popsicle colored suits.

Officers - 2006

PresidentTom Minor (314-645-4451)
 Vice-President Joe Conti (314-838-6342)
 Treasurer Gary Hendren (314-576-5261)
 Secretary Alan Barasch (314-994-1243)
 Librarian Alan Barasch
 Buxs Banker Gene Stewart
 Dispatch Editor Alan Barasch

© 2006 Greater St. Louis Stamp Club, Inc
 GSLSC is a Non-profit organization registered with
 the State of Missouri

Auction

The list is below. Remember – a lot will not open on the floor unless a bid is placed on it during the look period.

Lots should be turned in to **Joe Conti** (papaconti@sbcglobal.net) by the time of the breakfast meeting.

For some reason, I never received an auction list for this month. I do not know if it went off into “never-never-land” or was not sent.

Here are some upcoming stamps you might like to acquire:



Important Announcement

If there is a speaker that you would like us to get, perhaps you can facilitate getting him.

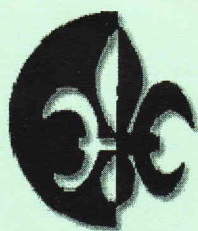
<http://www.MoPhil.org/GSLSC.htm>

Follow links on this page for information about other local clubs, shows, and maps to the shows.

Did you know that our web page now includes back issues of the Perf-Dispatch in PDF format and many of the presentations?

Some names were inadvertently dropped from the mailing list. You should receive 3 newsletters in your envelope this month if you were one of the six.





Greater Saint Louis Stamp Club Perf Dispatch

Volume XII, Number 6

June, 2006

Where ~~Parkway Central High School~~
~~Woods Mill Road~~

When 4th Monday each month at 8 PM

2006 Schedule

June 26 Impressions of Washington 2006
July NO MEETING
August 28 Clothesline Exhibits
????? StampFest – Creve Coeur
September 25 Swap Meet
October 23 TBA – David Straight
November Elections & Auction Bux Sale
December Holiday Party

June Meeting

In June, a number of members that were in Washington will give their impressions of the show. They may even bring in a few trinkets that they acquired {your editor spent his whole budget and then some in the first 3 minutes he was on the floor}.

Your editor saw **Tom Minor, Roger Grider, Gene Stewart, Bob Ogradnick, and David Straight** at the show. There were reports that **Gary Hendren** was there and ran off to another show in Virginia.

August Meeting

The meeting will consist of a Clothesline Exhibit. The object is to create a ONE PAGE exhibit.

Some of the criteria for the single page:

- One point for a title
- One point for telling a story
- One point for each of up to 3 collecting elements
- Two points for knowledge and research
- Three points for creativity.

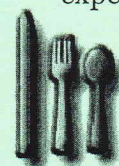
More details in the August Perf-Dispatch!

Special Meeting Location

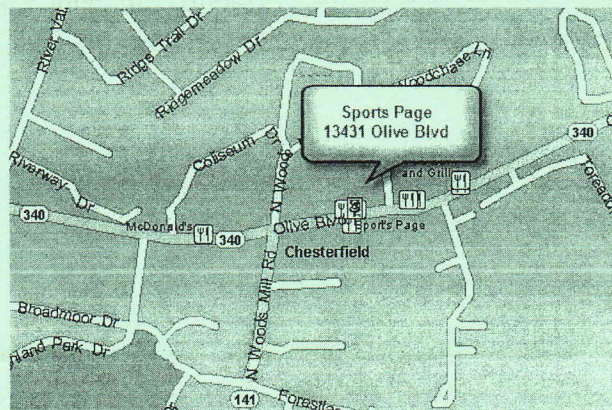
The Parkway Central High School is closed for repairs in June. We have arranged with the **Sports Page Restaurant** at 13431 Olive Blvd in Chesterfield to take over a side room.

The Sports Page is located in the strip center behind Dairy Queen near the intersection of Woods Mill Road and Olive.

You are encouraged to **come early for dinner** at 7 PM. We got the room gratis as they are expecting to sell some food. Sports Page makes the best hamburger in town. Other selections include chicken, salads, and soup. They also make their own fresh potato chips.



They will close off one room for us for the meeting so we will finally have the auction that has been postponed repeatedly.



Breakfast Club Meeting

The Breakfast group meets the 2nd Monday of the month. The next meeting is **July 11th** at Steak 'n Shake in Chesterfield at 8:30 AM.

For Sale at Club Cost

- 1 sheet of Wonders of America @ \$15.60
- Several Champlain 39¢ panes of 20 @ 7.80
- \$1, \$2, \$5 SS @ 8.00
- Joint US/Canada SS @ 1.75
- Dist Am Dip SS @ 2.34

See **Gary Hendren** at the next meeting.

Officers - 2006

PresidentTom Minor (314-645-4451)
 Vice-President Joe Conti (314-636-6342)
 Treasurer Gary Hendren (314-576-5261)
 Secretary Alan Barasch (314-994-1243)
 Librarian Alan Barasch
 Buys Banker Gene Stewart
 Dispatch Editor Alan Barasch

© 2006 Greater St. Louis Stamp Club, Inc
 GSLSC is a Non-profit organization registered with
 the State of Missouri

Auction

The list is below. Remember – a lot will not open on the floor unless a bid is placed on it during the look period.

Lots should be turned in to **Joe Conti** (papaconti@sbeglobal.net) by the time of the breakfast meeting.

Important Announcement

If there is a speaker that you would like us to get, perhaps you can facilitate getting him.

<http://www.MoPhil.org/GSLSC.htm>

Follow links on this page for information about other local clubs, shows, and maps to the shows.

Did you know that our web page now includes back issues of the Perf-Dispatch in PDF format and many of the presentations?

Lot #	Country	Scott No.	Cat \$	Description	Min Bid	Owner #
1	USA	2433	\$ 14.00	MNH S/S	5.00	107
2	USA	C-52	\$ 15.00	MNH LINE PR	2.00	107
3	BRASIL	68	\$ 12.00	M, NG, VF	2.00	254
4	BOTSWANA	19-32	\$ 57.35	M, LH, VF	14.00	254
5	GERMANY	952/56	\$ 12.10	M, VF, LH	3.00	254
6	FRANCE	43	\$500.00	USED, SPACE FILLER	4.00	254
7	SPAIN	215	\$150.00	USED, THIN, ROUNDED CORNERS	10.00	254
8	PORTUGAL	62	\$200.00	U, RED & BLACK CANCEL, VF	10.00	254
9	PORTUGAL	94	\$ 72.00	U, VF, ROUNDED CORNERS	9.00	254
10	BADEN	28a	\$ 29.00	M, NG, (PERFS CUT AT R)	2.50	254
11	SPAIN	168	\$ 24.00	M, F-VF, NG	3.00	254
12	ICELAND	86-91	\$ 49.75	M, VF, LH	12.00	254
13	WW	MISC	?????	1500+ STAMPS, MOSTLY MODERN	7.00	340
14	USA	1686/89	\$ 31.56	ARTCRAFT FDC	10.00	331
15	LIBERIA	341/46	\$ 0.96	CTO, VF	0.40	331
16	NETHERLANDS	344/358	\$ 1.80	USED, 12 STAMPS	0.80	331
17	N VIET NAM	106/108	\$ 4.00	USED, VF	1.50	331
18	VENEZULA	137&139	\$ 6.00	U, VF	1.75	331
19	VENEZULA	513/19	\$ 7.90	MNH	2.25	331
20	VENEZULA	992/993	\$ 0.60	MNH	0.25	331
21	United States			FDC - Disting Am Dip SS, , ,	4.85	Club
22	United States			Disting Am Dip SGL, M, ,	1.50	Club
23	United States	1629-31	\$ 6.50	Pane of 50, M, , Block,	6.00	Club
24	United States	1633-82	\$ 15.00	Pane of 50, M, , Block,	6.00	Club
25	United States	1690	\$ 6.50	Pane of 50, M, , Block,	6.00	Club
26	United States	1691-94	\$ 6.50	Pane of 50, M, , Block,	6.00	Club
27	United States	1704	\$ 6.50	Pane of 50, M, , Block,	6.00	Club



Greater Saint Louis Stamp Club Perf Dispatch

Volume XII Number 7



August, 2006

Where Parkway Central High School
Woodsmill Road

When 4th Monday each month at 8 PM

August Meeting

The meeting program is Clothesline Exhibits. See information in the next column. Alan has a sample on the next page.

Everybody gets to participate; and who knows, you may win some Auction Bux!

Breakfast Club Meeting

The Breakfast group meets the 2nd Monday of the month. The next meeting is **September 11th** at **Steak 'n Shake** in Chesterfield at 8:30 AM.

2006 Schedule

August 28 Clothesline Exhibits
September 2-3 StampFest – Parkway Central
Sept 25 Swap Meet
October 23 David Straight
November Auction Bux & Election
December Holiday Party

StampFest

The show is scheduled for Saturday and Sunday, **2-3 September 2006** in the gymnasium at **Parkway Central High School** (where club meetings are held).

The gym is just north of the main entrance to the school and has its own entrance, snack bar, and lobby area. Same place as last year.

As usual, we need plenty of volunteers for everything from setting up frames to taking down the tables. **Gary Hendren** will have sign-up lists at upcoming meetings.

As in previous years, we have a BBQ at the close of the show on Saturday night in which we invite all the dealers and members. Gary has sign-up sheets for vegetables, salads, and desserts.

The club provides the meat (chicken, hamburgers, brats) and our crew acts like cavemen and cooks over the open fire.

The **St. Louis Bears**, exhibitors group is mounting about 30 frames of exhibits.

If you have any heavy-duty extension cords, we can use them.

Everybody come out and support our dealers.

Clothesline Exhibits

The object of clothesline exhibits is to tell a whole story in ONE page. That is, tell the story of one cover, or one issue of stamps, or one stamp. See a sample at the bottom of the next page.

At the conclusion of this exercise, I hope we have enough one page exhibits to fill a whole frame (16 pages) at StampFest.

We will let your peers decide how well you have fulfilled the objectives and will award 100 Auction Bux to the winner and 50 to the runner-up.

I think this is going to be a lot of fun!

GREATER SAINT LOUIS STAMP CLUB
Parkway Central High School
369 No. Woods Mill Road
3-4 SEPTEMBER 2006

Free Parking Saturday...10AM – 5 PM
25+ Stamp Dealers Sunday ...10AM – 4 PM
Snack Bar Hourly Door Prizes

Philatelic Book Auction - Saturday

Maps and Directions at:

<http://stampfest.mophil.org>

Officers – 2006

President..... Tom Minor (314-645-4451)
 Vice-President..... Joe Conti (314-838-6342)
 Treasurer Gary Hendren (314-576-5261)
 Secretary Alan Barasch (314-994-1243)
 Buxs Banker Gene Stewart
 Dispatch Editor & Librarian Alan Barasch

© 2005 Greater St. Louis Stamp Club, Inc
 GSLSC is registered with the State of Missouri

Important Announcement

If there is a speaker that you would like us to get, perhaps you can facilitate getting him.

<http://www.MoPhil.org/GSLSC.htm>

Follow links on this page for information about other local clubs, shows, and maps to the shows.

Auction

The list is below. Remember – a lot will not open on the floor unless a bid is placed on it during the look period.

Lots should be turned in to **Joe Conti** (**papaconti@sbcglobal.net**) of the breakfast meeting.

Lot #	Country	Scott No.	Cat \$	Description	Min Bid	Owner #
2	USA	???	\$???	BI-CENTENNIAL S/S, M, VF,	9.00	55
3	AZORES	61	\$10.00	U, VF, , ,	2.00	254
4	ICELAND	O-4	\$30.00	M,VF, NG, , ,	4.00	254
5	Portugal	P1a	\$14.00	M, VF, , ,	3.00	254
6	Portugal	24	\$45.00	imp, u, frame cut into a B, , ,	5.00	254
7	France	C-13	\$16.00	U, VF, ROUNDED CORNER, , ,	2.50	254
8	USA	114	\$18.00	U, NATURAL SE,OC(PERFS CUT T FRAME), , ,	2.00	254
9	USA	148	\$25.00	U, F-VF, , ,	5.00	254
10	USA	161	\$20.00	U,F-VF, , ,	5.00	254
11	USA	211	\$20.00	U, VF, SMALL THIN, , ,	2.50	254
12	SUPPLIES	----	\$???	25 BLACK PAGE PROTECTORS, , ,	2.00	331
13	SUPPLIES	----	\$???	25 BLACK PAGE PROTECTORS, , ,	2.00	331
14	USA	---	\$76.70	WHITE ACE COMM PB PAGES/BINDER 1959-1970, , ,	10.00	331
15	SUPPLIES	---	\$???	3 NOTEBOOKS/PAGE PROTECTORS AND BLACK GRAPH PAGES, , ,	3.00	331`
16	USA	---	\$???	HARRIS PB ALBUM, , ,	1.00	331
17	Canada	---	\$???	HARRIS PB ALBUM, , ,	1.00	331

Note, there was no lot #1 listed on the file the editor received.

Sample
 clothesline
 exhibit page.

Grand Duchess of Luxembourg

This is what happens when you purchase something and are not sure what it is. In this case, I bought a postcard from Denny Peoples thinking that it showed the royal princesses of Austria.



Turns out that these are indeed royal princesses but of Luxembourg.

In the center is Grand Duchess Marie Adelheid. She is surrounded by her sisters. Marie Adelheid became grand duchess in 1912, abdicated in 1919 in favor of her sister Charlotte, and died in 1924.

Grand Duchess Charlotte (standing in back) became grand duchess in 1919 and ruled until 1964 when she abdicated in favor of her son, Jean.

The other sisters are Hilda, Sophie, Antonette, and Elisabeth.

Still a pretty card, but not what I thought and none are related directly to Queen Victoria!



Greater Saint Louis Stamp Club Perf Dispatch

Volume XII Number 8



September, 2006

Where Parkway Central High School
Woodsmill Road

When 4th Monday each month at 8 PM

September Meeting

Instead of a meeting and auction in September, we will have a **good old fashion Swap Meet**. All those things you have stuffed in your stamp room that you have never mounted; here is a chance to swap for another treasure.

We are not going to place many rules on the swaps. You may sell outright, trade value to value, or anything else that two or more people can agree upon.

In October, **David Straight** will be joining us for another rollicking talk on a subject to be decided soon.

David has a regular column in the American Philatelist on Back-of-the-Book. He is also a Director-at-Large of the APS. In addition, in case you have not heard, he will be running for the Board of Vice-Presidents in the next election cycle.

We may be able to persuade David to bring us up to date on the happenings in Bellefonte.

Breakfast Club Meeting

The Breakfast group meets the 2nd Monday of the month. The next meeting is **October 9th** at **Steak 'n Shake** in Chesterfield at 8:30 AM.

2006 Schedule

Sept 25	Swap Meet
October 23.....	David Straight
November 27.....	Auction Bux & Election
December 12 ?.....	Holiday Party
January 22, 2007.....	TBA

StampFest

The show is come and gone. It was a great weekend for stamps.

Some of the highlights were:

- We signed up 6 new members that are getting their first newsletter with this mailing
- Many people were looking at our exhibits. We filled about 36 frames this year.
- In spite of the low turnout, we did not hear any disparaging words from the dealers.
- Special thanks to our cooking crew (**Vic Silver, T.G. Rehkop, Ken Paulsen, Frank Kollinger**, and anyone I missed) for the BBQ on Saturday night.
- Our resident chefs outdid themselves with lots of goodies.
- Setup and takedown were performed in record time. Nobody tripped on the tarpaulin this year.
- We have tentatively chosen August 25-26, 2007 for next year's show.

Clothesline Exhibits

If you did an Exhibit in August and did not pick it up at the conclusion of the show, Alan has your page.

Was building the one page exhibit a lot of fun? Next year, how about 4 pages (one row in the exhibit frames).



Officers – 2006

President	Tom Minor (314-645-4451)
Vice-President	Joe Conti (314-838-6342)
Treasurer	Gary Hendren (314-576-5261)
Secretary	Alan Barasch (314-994-1243)
Buxs Banker	Gene Stewart
Dispatch Editor & Librarian	Alan Barasch

© 2006 Greater St. Louis Stamp Club, Inc
GSLSC is registered with the State of Missouri

Important Announcement

If there is a speaker that you would like us to get, perhaps you can facilitate getting him/her.

<http://www.MoPhil.org/GSLSC.htm>

Follow links on this page for information about other local clubs, shows, and maps to the shows.

Auction

The list is below. Remember – a lot will not open on the floor unless a bid is placed on it during the look period.

Lots should be turned in to **Joe Conti** (papaconti@sbcglobal.net) of the breakfast meeting.

Back Page

Well, lookie here! I have a page to fill and nothing to say. Between starting a new job and just now being motivated to sit down and write this thing; well here I am.

Some of you will say that I start a new job as often as you change underwear. It is probably true (but hope you change more often); I have had the privilege of being the “new guy” eleven times in the last 3 years.

Area Shows

Included with this edition of the Perf-Dispatch is the flyer for the St. Charles Fall Stamp Show coming on **Friday and Saturday**, October 27-28.

It will be held again at the “Heart of St. Charles Banquet Center” near the Station Casino.

Directions will be on the web site soon.

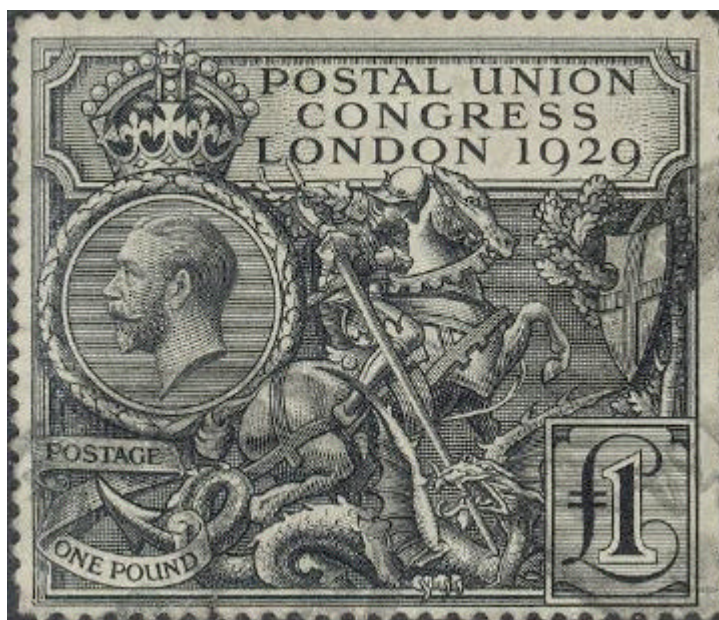
Favorite Stamp That You Do Not Have

Over the years, I have always wanted a Great Britain, Postal Union Congress stamp. I think it is one of the most beautiful ever issued.

So, why don't I have it? Good question. I was outbid on several copies in the last year. I

suppose that if I really, really want it, I have to pay the price.

I bet we all have stamps that for whatever reason, you have wanted one but never broke



down and made the commitment.

My friends say that if it was from the Falkland Islands, I would have had it years ago. They are probably correct.

I want one better centered than this example. It is for my collection, I can be picky.

All the errors in this newsletter are intentional; I need to know that you are reading it.



Greater Saint Louis Stamp Club Perf Dispatch

Volume XII Number 9



October, 2006

Where Parkway Central High School
Woodsmill Road

When 4th Monday each month at 8 PM

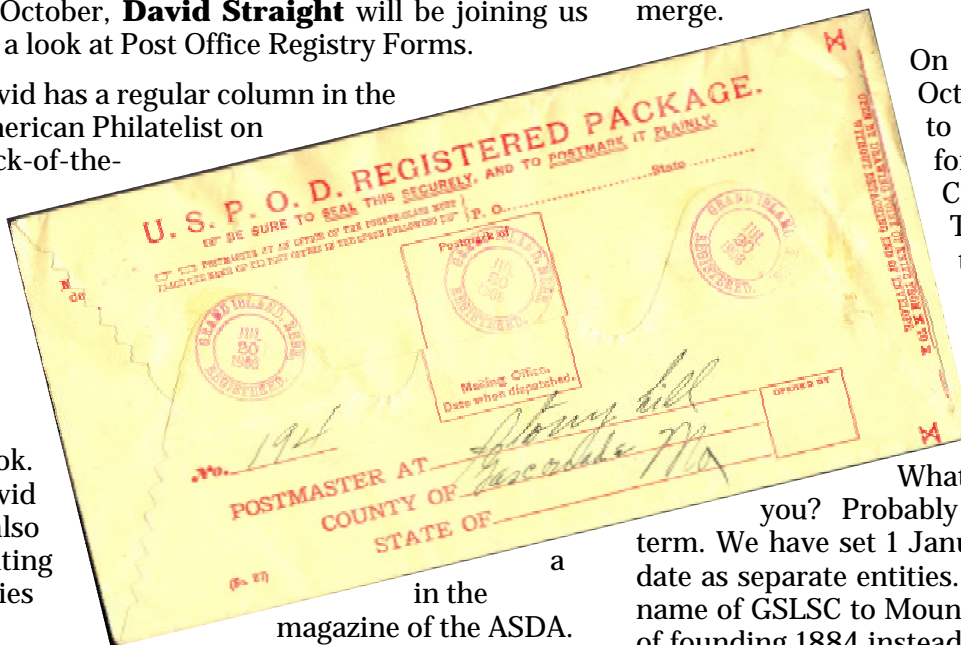
Special Announcement

In a joint meeting between the officers of the **Mound City Stamp Club** and the **Greater St. Louis Stamp Club**, they have decided to merge.

October Meeting

In October, **David Straight** will be joining us for a look at Post Office Registry Forms.

David has a regular column in the American Philatelist on Back-of-the-



Book. David is also writing series

in the magazine of the ASDA.

He is also a Director-at-Large of the APS. In addition, in case you have not heard, he will be running for the Board of Vice-Presidents in the next election cycle.

We may be able to persuade David to bring us up to date on the happenings at APS in Bellefonte.

Breakfast Club Meeting

The Breakfast group meets the 2nd Monday of the month. The next meeting is **November 13th** at **Steak 'n Shake** in Chesterfield at 8:30 AM.

2006 Schedule

October 23..... Registry Forms
November 27..... Auction Bux & Election
December 12 ?..... Holiday Party
January 22, 2007..... TBA

On September 22 and October 2, the officers met to discuss the dwindling fortunes of the Mound City Stamp Club. Though it has a large treasury, it has not found a niche and attendance has averaged less than 5 people for several months.

What does this mean to you? Probably nothing in the near term. We have set 1 January 2007 as the cutoff date as separate entities. We plan to change the name of GSLSC to Mound City, adopt their date of founding 1884 instead of our 1976, and adopt their low APS number.

We will not pick up more than 3 members that were not members of both. The officers of the two clubs are the same except in slightly different roles.

Your editor originally thought about changing the name of this newsletter to something else; but has decided against it. The logo of the club will likely change to reflect the dual nature.

When your officers have their annual meeting to hammer out programs for next year, they will finalize other details of this merger.

Other Area Clubs

Webster Groves 1st & 3rd Friday
Monsanto Stamp Club..... 4th Tuesday
St. Louis Bears (Exhibitors) 2nd Monday
Unit # 4 irregularly on 2nd Saturday
Germany Philatelic Society 2nd Wednesday

Officers – 2006

President.....	Tom Minor (314-645-4451)
Vice-President.....	Joe Conti (636-xxx-xxxx)
Treasurer	Gary Hendren (314-576-5261)
Secretary	Alan Barasch (314-994-1243)
Buxs Banker	Gene Stewart
Dispatch Editor & Librarian	Alan Barasch

© 2006 Greater St. Louis Stamp Club, Inc
GSLSC is registered with the State of Missouri

Important Announcement

If there is a speaker that you would like us to get, perhaps you can facilitate getting him/her.

<http://www.MoPhil.org/GSLSC.htm>

Follow links on this page for information about other local clubs, shows, and maps to the shows.

Auction

The list is below. Remember – a lot will not open on the floor unless a bid is placed on it during the look period.

Lots should be turned in to **Joe Conti** (**papaconti@sbcglobal.net**) of the breakfast meeting.

Back Page

I'm sure that **Joe** was planning to send me an auction list, but it never got to me. In addition, the new phone number he gave me goes to someone who never heard of him.

We will have an auction, just don't know what will be in it yet.

Area Shows

Don't forget Nancy's show at the St. Charles Fall Stamp Show coming on **Friday and Saturday**, October 27-28.

It will be held again at the "Heart of St. Charles Banquet Center" near the Station Casino.

See map adjacent

