

2009-January-perf-dispatch	2
2009-February-perf-dispatch	4
2009-March-perf-dispatch	6
2009-April-perf-dispatch	8
2009-May-perf-dispatch	10
2009-June-perf-dispatch	12
2009-August-perf-dispatch	14
2009-October-perf-dispatch	16
2009-November-perf-dispatch	18



# Greater Alound City Stamp Club **Perf-Dispatch**

**Volume XV, Number 1**

Established 1884

**January, 2009**

**Where** Parkway Central High School  
Woodsmill Road

**When** 4<sup>th</sup> Monday each month at 8 PM

## **January Meeting**

On January 26, **Alan Barasch** and **T.G. Rehkop** will speak on Canadian Provinces Stamps and Revenues.

## **Breakfast Club Meeting**

The Breakfast group meets the 2<sup>nd</sup> Monday of the month. The next meeting is **February 9<sup>th</sup>** at Steak 'n Shake in Chesterfield at 8:30 AM.

## **2009 SCHEDULE**

January 26, 2009 ..... Canadian Stamps & Revenues  
Feb 23.....Abraham Lincoln  
February 27-28, March 1 .....St Louis Stamp Expo  
March 23.....Parcel Post Covers

## **Saint Louis Stamp Expo 2009**

Expo will be upon us right after the February GMCSC meeting. Most committees need volunteers to check badges, help with set-up and take-down, and assist dealer check-in.

The Friday of the show is "Children's Day" and we understand that 5 schools are bringing a total of 365 students. Much help is required to

keep the children moving.

The **United States Stamp Society** and **Scandinavian Collectors Club** are meeting as well as the **Illinois & Missouri Postal History societies**.

Again, this year, there will be an **Adult Beginner's** class on Sunday. If you or someone you know would be interested, see Tom Jozwik at Regency or have them sign up on Saturday at the show.

<http://www.stLouisStampExpo.org>



## **Dues Time**

The dues for the GMCSC have not changed in more than 15 years and are still the greatest bargain in philately. Dues are just \$5 for a single member or \$6 for the whole family.

## **American Topical Association**

GMCSC has recently become a chapter of the American Topical Association (ATA). Since we have six members of that group, we get free dues.

During the year, we plan to devote at least one meeting to topical collecting subjects.

Perhaps you have a topical collection that you would like to show to the group.

## **Dues Time**

Name			\$5 - Single
Street			\$6 - Family
City State			
Dues are expected by 02/23/2009 to: Gary Hendren, 12737 Glenage Drive, Maryland Heights, MO 63043 Check your envelope --. If the "Thru" is 09 or higher, you are already covered!			

## Officers – 2009

President .....Tom Minor (314-645-4451)  
 Vice-President..... Joe Conti (636-327-5569)  
 Treasurer..... Gary Hendren (314-576-5261)  
 Secretary ..... Alan Barasch (314-994-1243)  
 Recording Secretary..... Dan Baugher  
 Librarian..... Alan Barasch  
 Buxs Banker ..... Gene Stewart  
 Dispatch Editor ..... Alan Barasch

© 2009 Greater Mound City Stamp Club, Inc

## Important Announcement

If there is a speaker that you would like us to get, perhaps you can facilitate getting him.

<http://www.GreaterMoundCity.org>

## Auction

The list is below. Remember – a lot will not open on the floor unless a bid is placed on it during the “look” period.

Lots should be turned in to **Joe Conti**  
 (papaconti@aol.com) by the time of the breakfast meeting.

## January 2009 Auction

Lot	Country	Scott No.	Cat \$	Description	Min Bid	Owner
1	USA	E-15/17	2.85	(15)VFNHOG (16)FVFNHOG(17)VFLHOG	2	gg
2	USA	E22-23	2.5	(22)FVFNHOG(23)FNHOG	1.5	gg
3	USA	69	350	U,XF,PF,VERTICAL CREASE,SM CREASE@BR	50	gg
4	USA	230	60	VF,NH,OG	40	gg
5	USA	C-11	35	XF,MNH,PSE,TINY THIN UL	6	gg
6	USA	C-10	7	VF,H,OG	5	gg
7	USA	232	60	VF/XF,OG,PRE,SM REPAIR&GUM SOAKED PERF	20	gg
8	USA	233	230	FVF,NH,DOG,PIN HEAD SIZE THINS RC&BC	30	gg
9	USA	264	6.5	F,LH,OG	12	gg
10	Germany	728	10	m,vf	2	254
11	Germany	748/9	11	mnh	3	254
12	Germany	771/772A	10.9	mnh,vf	3	254
13	Germany	B-19/22	16.5	mnh,vf,319 dg	4.5	254
14	Germany	B69/78	31.3	mnh,f-vf	7	254
15	Germany	B-82/89	16.6	mnh,vf	4	254
16	Iceland	429/30	6.5	mnh,vf	2	254
17	Portugal	29	86	u,vf,rounded bl corner	10	254
18	Spain	159	6	mnh, f-vf	2	254
19	Spain	386/402	43.35	mnh,vf	11	321
20	USA	24	45	u,3 wide margins, perfs cut @B	5	321
21	USA	26	21	u,vf, claret color	6	321
22	USA	145	15	u,oc(perfs almost touch frame at R)	2	321
23	USA	189	22.5	u, cork cancel,vf	6	321
24	USA	224	20	u,vf	5	321
25	USA	236	75	m,hr,f-vf,few teeth trimmed@R	10	321
26	USA	274	14	u,f-vf,thin	2	321
27	USA	301	16	m,f-vf,hh	3	321
28	USA	RW-25	10.5	U,ON PERMIT	3	club
29	USA	RW_26	11	u,on permit	3	club
30	USA	RW-27	10.5	u,on permit	3	club
31	USA	RW-28	10.5	u, on permit	3	club
32	USA	RW-29	10.5	u, on permit	3	club
33	USA	RW-30	10.5	u, on permit	3	club
34	USA	RW_31	10.5	u, on permit	3	club
35	USA	2496/00	15.75	mnh, 5 strips of 5	6.25	club



# Greater Alound City Stamp Club **Perf-Dispatch**

**Volume XV, Number 2**

Established 1884

**February, 2009**

**Where** Parkway Central High School  
Woodsmill Road

**When** 4<sup>th</sup> Monday each month at 8 PM

Sunday. If you or someone you know would be interested, see Tom Jozwik at Regency or have them sign up on Saturday at the show. The class size is limited to 20.

<http://www.stlouisstampexpo.org>

## **February Meeting**

**Tom Minor** will regale us with Lincoln items from his collection on February 23.

## **Breakfast Club Meeting**

The Breakfast group meets the 2<sup>nd</sup> Monday of the month. The next meeting is **March 9<sup>th</sup>** at Steak 'n Shake in Chesterfield at 8:30 AM.

## **2009 SCHEDULE**

Feb 23.....Abraham Lincoln  
February 27-28, March 1 .....St Louis Stamp Expo  
March 23.....Parcel Post Covers  
Later ..... Canadian Stamps & Revenues

## **Saint Louis Stamp Expo 2009**

The Friday of the show is "Children's Day" and we understand that 5 schools are bringing a total of 365 students. Much help is required to keep the children moving.

The **United States Stamp Society** and **Scandinavian Collectors Club** are meeting as well as the **Illinois & Missouri Postal History societies**.

Again, this year, there will be an **Adult Beginner's** class on



## **Dues Time**

The dues for the GMCSC have not changed in more than 15 years and are still the greatest bargain in philately. Dues are just \$5 for a single member or \$6 for the whole family.

## **Database Update**

A number of people have asked for a list of what other members of the club collect.

Our applications are not up-to-date and we generally don't have this information. Therefore, in this month's Dispatch, there is a questionnaire.

Fill out what you wish to share and return to Alan either by mail, attached to an email, or at a club meeting. We plan to publish a new membership list in the spring.

## **Let it Snow**

January was just one of those months! Hope we called everybody who had planned to attend.

Name			\$5 - Single	
Street				\$6 - Family
City State				
Dues are expected by 02/23/2009 to: Gary Hendren, 12737 Glenage Drive, Maryland Heights, MO 63043 Check your envelope --. If the "Thru" is 09 or higher, you are already covered!				

## Officers – 2009

President .....Tom Minor (314-645-4451)  
 Vice-President..... Joe Conti (636-327-5569)  
 Treasurer..... Gary Hendren (314-576-5261)  
 Secretary ..... Alan Barasch (314-994-1243)  
 Recording Secretary..... Dan Baugher  
 Librarian..... Alan Barasch  
 Buxs Banker ..... Gene Stewart  
 Dispatch Editor ..... Alan Barasch

© 2009 Greater Mound City Stamp Club, Inc

## Important Announcement

If there is a speaker that you would like us to get, perhaps you can facilitate getting him.

<http://www.GreaterMoundCity.org>

## Auction

The list is below. Remember – a lot will not open on the floor unless a bid is placed on it during the “look” period.

Lots should be turned in to **Joe Conti** (papaconti@aol.com) by the time of the breakfast meeting.

## January & February 2009 Auctions

Lot	Country	Scott No.	Cat \$	Description	Min Bid	Owner
1	USA	E-15/17	2.85	(15)VFNHOG (16)FVFNHOG(17)VFLHOG	2	gg
2	USA	E22-23	2.5	(22)FVFNHOG(23)FNHOG	1.5	gg
3	USA	69	350	U,XF,PF,VERTICAL CREASE,SM CREASE@BR	50	gg
4	USA	230	60	VF,NH,OG	40	gg
5	USA	C-11	35	XF,MNH,PSE,TINY THIN UL	6	gg
6	USA	C-10	7	VF,H,OG	5	gg
7	USA	232	60	VF/XF,OG,PRE,SM REPAIR&GUM SOAKED PERF	20	gg
8	USA	233	230	FVF,NH,DOG,PIN HEAD SIZE THINS RC&BC	30	gg
9	USA	264	6.5	F,LH,OG	12	gg
10	Germany	728	10	m,vf	2	254
11	Germany	748/9	11	mnh	3	254
12	Germany	771/772A	10.9	mnh,vf	3	254
13	Germany	B-19/22	16.5	mnh,vf,319 dg	4.5	254
14	Germany	B69/78	31.3	mnh,f-vf	7	254
15	Germany	B-82/89	16.6	mnh,vf	4	254
16	Iceland	429/30	6.5	mnh,vf	2	254
17	Portugal	29	86	u,vf,rounded bl corner	10	254
18	Spain	159	6	mnh, f-vf	2	254
19	Spain	386/402	43.35	mnh,vf	11	321
20	USA	24	45	u,3 wide margins, perfs cut @B	5	321
21	USA	26	21	u,vf, claret color	6	321
22	USA	145	15	u,oc(perfs almost touch frame at R)	2	321
23	USA	189	22.5	u, cork cancel,vf	6	321
24	USA	224	20	u,vf	5	321
25	USA	236	75	m,hr,f-vf,few teeth trimmed@R	10	321
26	USA	274	14	u,f-vf,thin	2	321
27	USA	301	16	m,f-vf,hh	3	321
28	USA	RW-25	10.5	U,ON PERMIT	3	club
29	USA	RW_26	11	u,on permit	3	club
30	USA	RW-27	10.5	u,on permit	3	club
31	USA	RW-28	10.5	u, on permit	3	club
32	USA	RW-29	10.5	u, on permit	3	club
33	USA	RW-30	10.5	u, on permit	3	club
34	USA	RW_31	10.5	u, on permit	3	club
35	USA	2496/00	15.75	mnh, 5 strips Of 5	6.25	club
1	USA	VARIOUS	?	\$6.00 FACE MINT	\$ 4.80	23T
2	USA	VARIOUS	?	\$10.00 FACE MINT	\$ 8.00	23T
3	USA	VARIOUS	?	\$15.50 FACE MINT	\$ 12.40	23T
4		VARIOUS	>71.00	HIGHER CAT VALUE MINT, FACE IS \$9.00	\$ 17.75	23T
5	SAAR	VARIOUS	?	26 GLASSINES CONTAINING APPROX 100	\$ 1.00	23T
6	Dahomey/Katanga	VARIOUS	?	40 MINT/USED	\$ 0.50	23T
7	CHILE	VARIOUS	?	OVER 100 USED	\$ 2.00	23T
8	VARIOUS	VARIOUS	>20.00	OVER 100 OVPTS FROM Russia/Armenia/etc	\$ 1.00	23T
9	SPAIN	VARIOUS	?	FEW 100 USED, SOME DUPS/WAR STAMPS	\$ 1.00	23T
10	ENGLAND	VARIOUS	?	APPROX 30 GLASSINES OF MACHIN HEADS	\$ 1.00	23T
11	SUPPLIES		15(EST)	5 SETS SCOTTS CLEARMOUNTS,22/25	\$ 5.00	23T
12				6X6X4.5 METAL BOX WITH DIVIDERS	\$ 1.00	23T
13	WORLDWIDE	VARIOUS	?	10X13X8 BOX HALF FILLED/ ON PAPER WW	\$ 3.50	23T



# Greater Alound City Stamp Club **Perf-Dispatch**

**Volume XV, Number 3**

Established 1884

**March, 2009**

**Where** Parkway Central High School  
Woodsmill Road

**When** 4<sup>th</sup> Monday each month at 8 PM

## **March Meeting**

**Scott Ward** from Fulton, MO is speaking to us on March 23<sup>rd</sup> about **Parcel Post covers**. Scott is the president of the Columbia Philatelic Society and runs the Youth program at St. Louis Stamp Expo.

Scott's exhibit of Parcel Post covers won a Gold medal the first time it was shown at the recent show. It also won the Missouri Exhibitors Prize for the best entrant from Missouri and the Most Popular.

## **Breakfast Club Meeting**

The Breakfast group meets the 2<sup>nd</sup> Monday of the month. The next meeting is **April 13<sup>th</sup>** at Steak 'n Shake in Chesterfield at 8:30 AM.

## **2009 SCHEDULE**

March 23.....	Parcel Post Covers
April 13.....	Breakfast Meeting
April 27.....	Canadian Stamps & Revenues
May 11.....	Breakfast Meeting
May 18.....	Topical Subject
June 22.....	Clothesline Exhibits

## **Saint Louis Stamp Expo 2009**

The show is over and was a resounding success. Early returns indicate that attendance was up 15% over last year.

Pictures from the Youth Events and Awards Banquet have been posted on the website:

<http://www.stlouisstampexpo.org>

## **Dues Time**

The dues for the GMCSC have not changed in more than 15 years and are still the greatest

bargain in philately. Dues are just \$5 for a single member or \$6 for the whole family.

The numbers near the return address on the envelope are your member number and the last 2 digits of the year through which you are paid.

Some envelopes this month are not up to date because someone was late in reporting payments to the secretary.

Membership cards will be sent shortly.

## **Database Update**



Thank you to everyone who has already returned the forms from last month. Your secretary realized that the place for phone numbers was omitted. We will attempt to collect these later.

Fill out what you wish to share and return to Alan either by mail, attached to an email, or at a club meeting. We plan to publish a new membership list in the spring. The database is being revamped and will be easier to administer in the future.

## **Retired Monsanto Circuit Books**

There will be 30 approval books from Monsanto to review. Arrive around 7 PM if you want extra time to view the books. Cost is still 10 percent of catalog.

We also have several collections you may pick through.

## **Nancy's Show**

Nancy Moellering's **Saint Charles Spring Show** will be FRIDAY and SATURDAY, April 17 & 18 at the Heart of St. Charles Banquet Center at I-70 and 5<sup>th</sup> Street.

Look for the flyer with this newsletter.

## Officers – 2009

President .....Tom Minor (314-645-4451)  
 Vice-President..... Joe Conti (636-327-5569)  
 Treasurer..... Gary Hendren (314-576-5261)  
 Secretary ..... Alan Barasch (314-994-1243)  
 Recording Secretary..... Dan Baugher  
 Librarian..... Alan Barasch  
 Buxs Banker..... Gene Stewart  
 Dispatch Editor ..... Alan Barasch

© 2009 Greater Mound City Stamp Club, Inc

## Important Announcement

If there is a speaker that you would like us to get, perhaps you can facilitate getting him.

<http://www.GreaterMoundCity.org>

## Auction

The list is below. Remember – a lot will not open on the floor unless a bid is placed on it during the “look” period.

Lots should be turned in to **Joe Conti** (papaconti@aol.com) by the time of the breakfast meeting.

## March 2009 Auction

Lot	Country	Scott No.	Cat \$	Description	Min Bid	Owner
1	USA	68a	65	U,PERFS CUT @L	7	321
2		145	20	U,OILY CANCEL	2.5	321
3		228	30	U,perfs touch frame @T&R	4.5	321
4		296	15	U,VF	4	321
5		415	13.5	U,FVF	3	321
6	GERMANY	2	27.5	U,FVF	6	254
7	DENMARK	32a	65	U, LL CORNER MISSING	5	254
8	BRAZIL	786/801	10.65	MNH,VF	3	254
9		9	20	U, NARROW MARGIN @L,HEAVY CANCEL	2	254
10	AUSTRIA	64	20	U,VF	5	254
11	BOOK	—	?	OFFICIAL 2005 BLACKWOOD US PRICE GUIDE	3	395
12	LEBANON	376/80	7	MNH ,SCOUT STAMPS	2	395
13		C331/33				395
14	PHILIPPINES	?	?	JAP OCCUPIED ENV &FDC	2.5	395
15		?	?	JAP OCCUPIED POSTCARD & FDC	2.5	395
16		?	?	JAP OCCUPIED OFFICIAL POSTCARDS(2)	2.5	395
17	BOOK	?	?	2003 US SPECIALIZED CAT	3	340
18	PRC	VARIOUS	?	APPROX 90 USED STAMPS	2	340
19	JAMAICA		3.6	u 24,75,101,105	1	340
20	USA	677	37.5	MH	7	340
21		524	35	U	6	340
22		267	16	VF,NH,OG	12	386
23		270	37.5	VF,H,OG	25	386
24		279	9	F,LH,OG	4	386
25		279b	25	F,LH,OG	9	386
26		294	45	FVF,NH,OG,SM GUM SKIPS	25	386
27	BOOK		10(EST)	32 PG PADDED STOCK BOOK	3	CLUB
28	USA	C8	2.75	M,H	1	23
29		C9	7	M,H	2	23
30		C10	7	M,HH, CREASE	2	23
31		C11	9	MNH	2	23
32		C12	9	M,HH	2	23
33	BAHAMAS	?	?	8 DIFF PLATE BLOCKS	2	23S
34	USA	?	?	U PB SGLS &U PLATE BLOCKS	1	
35		1633	17.8	STATE FLAGS	6	23X
36	NON PHILATELIC	?	?	3 PCS OF ARTWORK BY G INGLES	3	23y



# Greater Alound City Stamp Club **Perf-Dispatch**

**Volume XV, Number 4**

Established 1884

**April, 2009**

**Where** Parkway Central High School  
Woodsmill Road

**When** 4<sup>th</sup> Monday each month at 8 PM

## **April Meeting**

**Alan Barasch** shall attempt again to present Canadian Province Stamps and Revenues that was originally scheduled in January but was snowed out. We hope that we will not get another blizzard at the end of April.

If you miss this presentation, there is a third chance at **Columbia (MO) Philatelic Society** on May 19<sup>th</sup>. We try to support our sister clubs around the area as much as possible.

## **Breakfast Club Meeting**

The Breakfast group meets the 2<sup>nd</sup> Monday of the month. The next meeting is **May 11<sup>th</sup>** at Steak 'n Shake in Chesterfield at 8:30 AM.

## **2009 SCHEDULE**

April 27 .....	Canadian Stamps & Revenues
May 11 .....	Breakfast Meeting
May 18 .....	Topical Subject
May 19 .....	Canadian in Columbia
June 8 .....	Breakfast Meet
June 22 .....	Clothesline Exhibits
July 13 .....	Breakfast Meeting
July 27 .....	NO MEETING
August 10 .....	Breakfast Meeting
August 24 .....	TBA
August 29-30 .....	StampFest
September .....	TBA
October .....	David Straight
November .....	Auction Bux Sale
December 10 .....	Holiday Party

The numbers near the return address on the envelope are your member number and the last 2 digits of the year through which you are paid. We think we have the errors unraveled now; apparently not all parties recorded one of the deposits.

## **Database Update**

Thank you to everyone who have already returned the forms from February. Your secretary realized that the place for phone numbers was omitted. We will attempt to collect these later.

We plan to publish a new membership list in the spring. The database is being revamped and will be easier to administer in the future.

## **Retired Monsanto Circuit Books**

There will be 30 approval books from Monsanto to review. Arrive around 7 PM if you want extra time to view the books. We also have several collections you may pick through.

## **American Topical Association**

Did you know that a local collector recently became the Executive Secretary of the **American Topical Association (ATA)** and the head office has moved to Cartersville, IL?

**Vera Felts**, whom many of you know from her time staffing the registration desk at Stamp Expo took over in April.

## **POSTAGE RATES**

It is that time of year and rates are going up on May 11. It will cost 44¢ to send a first class letter.

Illustrated on back are some of the new issues for the change.

## **New Members**

At recent meetings, we welcomed several new members including:

- Scott Ward – last month's speaker from Fulton
- Nathan Esbock
- Rick McCoy

Be sure to greet them and let them know what a great group they have joined.

## • Officers – 2009

President .....Tom Minor (314-645-4451)  
 Vice-President..... Joe Conti (636-327-5569)  
 Treasurer..... Gary Hendren (314-576-5261)  
 Secretary ..... Alan Barasch (314-994-1243)  
 Recording Secretary..... Dan Baugher  
 Librarian..... Alan Barasch  
 Buys Banker..... Gene Stewart  
 Dispatch Editor..... Alan Barasch

© 2009 Greater Mound City Stamp Club, Inc

## Important Announcement

If there is a speaker that you would like us to get, perhaps you can facilitate getting him.

<http://www.GreaterMoundCity.org>

## Auction

The list is below. Remember – a lot will not open on the floor unless a bid is placed on it during the “look” period.

Lots should be turned in to **Joe Conti**  
 (papaconti@aol.com) by the time of the breakfast meeting.

## April 2009 Auction

Lot	Country	Scott No.	Cat \$	Description	Min Bid	Owner
1	South Africa	misc	?	40 diff,u	\$ 1.00	340
2	WW	misc	?	ALBUM CONTAINS >300 PRE-1940 USED	?	340
3	FRANCE	B-92	\$ 4.25	USED	\$ 1.00	340
4	FRANCE	B-77	\$ 5.50	USED	\$ 1.00	340
5	USA	280	\$ 32.50	U,OC	\$ 4.00	340
6	USA	Q-1/9	\$ 72.05	U, SLIGHT UNNOTIABLE TEAR ON q-8	\$ 7.20	306
7	USA	E-16	?	TWO STAMPS, 1 MINT, OTHER U,PREPAID	\$ 0.90	306
8	USA	JQ-5	\$ 5.00	U	\$ 1.50	306
9	USA	257	\$ 18.50	U,VF	\$ 4.50	254
10	USA	159	\$ 20.00	U,F-VF	\$ 4.50	254
11	USA	145	\$ 20.00	U,LGT CANCEL,NARROW R MARGIN	\$ 3.00	254
12	USA	73	\$ 65.00	U,PERFS CUT @B	\$ 6.00	254
13	USA	65	\$ 50.00	M,OG,HORIZONTAL CREASE,PERFS CUT r FRAME	\$ 5.00	254
14	DENMARK	210/19	\$ 26.25	U, VF	\$ 7.00	321
15	CUBA	498/9	\$ 10.00	M,LH,VF	\$ 2.50	321
16	BRAZIL	54a	\$ 25.00	U, PERFS CUT I FRAME	\$ 3.00	321
17	austria	b118/21	\$ 38.35	m,vf,b-120 has thin corner	\$ 10.00	321
18	austria	565/7	\$ 14.00	m,lh,vf	\$ 4.00	321
19	LUXEMBURG	324/5	\$ 3.50	MNH,VF,SCOUTING	\$ 1.00	395
20	LIECHTENSTEIN	B-11/3	\$ 125.00	MNH,VF	\$ 20.00	395
21	LIECHTENSTEIN	270/3	\$ 35.00	MNH,VF	\$ 5.00	395
22	DUBAI	C24a-e	\$ 60.00	MNH,VF, 5 NUMBERED S/S SHEETS	\$ 10.00	395
23	DUBAI	C-47/51	\$ 11.00	MNH,VF,OVERPRINT	\$ 3.00	395





# Greater Mound City Stamp Club **Perf-Dispatch**

**Volume XV, Number 5**

Established 1884

**May, 2009**

**Where** Parkway Central High School  
Woodsmill Road

**When** 4<sup>th</sup> Monday each month at 8 PM

## **May Meeting**

**Alan Barasch, Tom Minor, and Gary Hendren** will team up to present a range of Topical Topics. Early responses show these to be religion on stamps, buildings, and mathematics.

## **Stop the Presses!**

Memorial Day comes on the 4<sup>th</sup> Monday in May (our regular meeting night). The meeting in May is held one week early on **May 18<sup>th</sup>** to accommodate.

## **Breakfast Club Meeting**

The Breakfast group meets the 2<sup>nd</sup> Monday of the month. The next meeting is **June 8<sup>th</sup>** at Steak 'n Shake in Chesterfield at 8:30 AM.

## **2009 SCHEDULE**

May 18 .....	Topical Subject
May 19 .....	Canadian in Columbia
June 8 .....	Breakfast Meet
June 22 .....	Clothesline Exhibits
July 13 .....	Breakfast Meeting
July 27 .....	NO MEETING
August 10 .....	Breakfast Meeting
August 24 .....	Vera Felts on ATA
August 29-30 .....	StampFest
September .....	TBA
October .....	David Straight
November .....	Auction Bux Sale
December 10 .....	Holiday Party

## **Updates**

The numbers near the return address on the envelope are your member number and the last 2 digits of the year through which you are paid.

## **Retired Monsanto Circuit Books**

There will be 30 approval books from Monsanto to review. Arrive around 7 PM if you want extra time to view the books. We also have several collections you may pick through.

## **StampFest '09**

Did you realize that Greater Mound City; through its mergers, celebrates its **125<sup>th</sup> Anniversary** in 2009? The **Saint Louis Bears** exhibitors group realized this.

To celebrate, each member of the group has promised an entirely new exhibit for StampFest. We have engaged the services of **Dr. Peter McCann** to serve as Judge for the show.

Peter is a past president of the APS, accredited International Judge, and friend of our group. He joins a long list of recognized philatelic giants that have judged our exhibits.

We only have 3 more regularly scheduled meetings between now and StampFest.

## **POSTAGE RATES**

It is that time of year and rates went up on May 11. It now costs 44¢ to send a first class letter.

## **New Members**

At recent meetings, we welcomed several new members including:

- Martin E. White

Be sure to greet them and let them know what a great group they have joined.

## Officers – 2009

President .....Tom Minor (314-645-4451)  
 Vice-President..... Joe Conti (636-327-5569)  
 Treasurer..... Gary Hendren (314-576-5261)  
 Secretary ..... Alan Barasch (314-994-1243)  
 Recording Secretary..... Dan Baugher  
 Librarian..... Alan Barasch  
 Buxs Banker ..... Gene Stewart  
 Dispatch Editor ..... Alan Barasch

© 2009 Greater Mound City Stamp Club, Inc

## Important Announcement

If there is a speaker that you would like us to get, perhaps you can facilitate getting him.

<http://www.GreaterMoundCity.org>

## Auction

The list is below. Remember – a lot will not open on the floor unless a bid is placed on it during the “look” period.

Lots should be turned in to **Joe Conti**  
 (papaconti@aol.com) at the time of the breakfast meeting.

## May 2009 Auction

Lot	Country	Scott No.	Cat \$	Description	Min Bid	Owner
1	USA	1559	\$ 8.00	MNH SHEET	\$ 3.50	23T
2	USA	1560	\$ 10.00	MNH SHEET	\$ 4.50	23T
3	USA	1561	\$ 10.00	MNH SHEET	\$ 4.50	23T
4	USA		\$ 15.00	CLASSIC US IMPERFORATE STAMPS BY ROSE	\$ 8.00	23T
5	USA		\$ 5.00	DOANE CANCELS OF ILL,IA,MI,MO,NE	\$ 8.00	23T
6	ARGENTINA	VARIOUS	\$ 50.00	ASST SEMI SORTED IN GLASSINES	\$ 5.00	23T
7	FOREIGN	VARIOUS	???	mostly full @ partial sheets	\$ 5.00	23T
8	USA	191a	\$ 25.00	VF,OG,NH,pnc strip 5,PL 4	\$ 15.00	GG
9	USA	206	\$ 100.00	VF,OG,H	\$ 50.00	GG
10	USA	397	\$ 44.00	VF,OG,NH,PF CERT	\$ 25.00	GG
11	USA	448	\$ 34.00	VF/XF,OG, NH,PF CERT GRADED 85	\$ 18.00	GG
12	USA	559	\$ 55.00	XF,OG,NH,PSE CERT,GRADED 90	\$ 30.00	GG
13	USA	E-22/23	\$ 2.50	VF,OF,NH	\$ 1.50	GG
14	USA	73	\$ 73.00	BLUE CANCEL,PERFS CUT B FRAME,U	\$ 5.00	321
15	USA	185	\$ 22.50	U,VF	\$ 6.00	321
16	USA	283	\$ 12.50	U,VF	\$ 4.00	321
17	USA	479	\$ 42.50	U,F-VF,ONE SHORT TOOTH	\$ 6.00	321
18	USA	612	\$ 15.00	PERFS ALMOST TOUCH R FRAMEM,H	\$ 3.00	321
19	USA	C-2	\$ 75.00	M,H,VF,TINY HINGE THIN	\$ 10.00	321
20	USA	230	\$ 22.50	M,F-VF	\$ 3.75	306
21	USA	231	\$ 21.00	MNH,DAMAGED GUM	\$ 3.15	306
22	USA	234	\$ 95.00	MINTNG	\$ 14.25	306
23	USA	623	\$ 25.00	MNHF	\$ 4.25	306
24	USA	696	\$ 12.00	MNHF-VF	\$ 2.40	306
25	LIBYA	253a	\$ 2.75	MNH S/S	\$ 1.00	395
26	LIECHTENSTEIN	316a	\$ 21.00	MNH	\$ 5.00	395
27	GREAT Britain	27A	\$ 90.00	u, perfs cut t frame,wing copy	\$ 10.00	254
28	GREAT Britain	377/8	\$ 12.25	MNH,VF	\$ 3.00	254
29	CAPE OF GOOD HOPE	4	\$ 55.00	FRAME CUT INTO T OF R	\$ 6.00	254
30	HONG KONG	166A	\$ 16.00	U,VF,PEN WRITING ON BACK	\$ 4.00	254
31	N RHODESIA	46a	\$ 11.00	u, vf	\$ 3.00	254
32	S AFRICA	63	\$ 24.00	F-VF, VT PAIR, HEAVY CANCEL	\$ 4.00	254

## AUCTION BUX

Do you ever wonder about the Play Money that is handed out at every meeting? All during the year, you may “earn” Auction Bux for various activities. These activities include participation in programs, sending a tidbit for the newsletter, working at the shows, or simply winning an auction lot.

Every November, we hold an auction of donated items and you bid on them with your accumulated Bux. Since not everyone attends every meeting, we give you a chance to earn some Bux on that night.

Auction Bux is just another way of giving back to those that make the group work!



# Greater Alound City Stamp Club **Perf-Dispatch**

**Volume XV, Number 6**

Established 1884

**June, 2009**

**Where** Parkway Central High School  
Woodsmill Road

**When** 4<sup>th</sup> Monday each month at 8 PM

## **June Meeting**

This month, the program is Clothesline Exhibits. The object is to mount one or more stamps on a page and tell a whole story in that page. See example in next column.

We will set all the pages up and let our peers decide if we were successful in telling our stories. You are encouraged to put your finished pages in a frame that will be set aside at StampFest for the clothesline pages.

## **Breakfast Club Meeting**

The Breakfast group meets the 2<sup>nd</sup> Monday of the month. The next meeting is **June 8<sup>th</sup>** at Steak 'n Shake in Chesterfield at 8:30 AM.

## **2009 SCHEDULE**

June 22 .....	Clothesline Exhibits
July 13 .....	Breakfast Meeting
July 27 .....	NO MEETING
August 10 .....	Breakfast Meeting
August 24 .....	Vera Felts on ATA
August 29-30 .....	StampFest
September .....	TBA
October .....	David Straight
November .....	Auction Bux Sale
December 10 .....	Holiday Party

## **Updates**

The numbers near the return address on the envelope are your member number and the last 2 digits of the year through which you are paid.

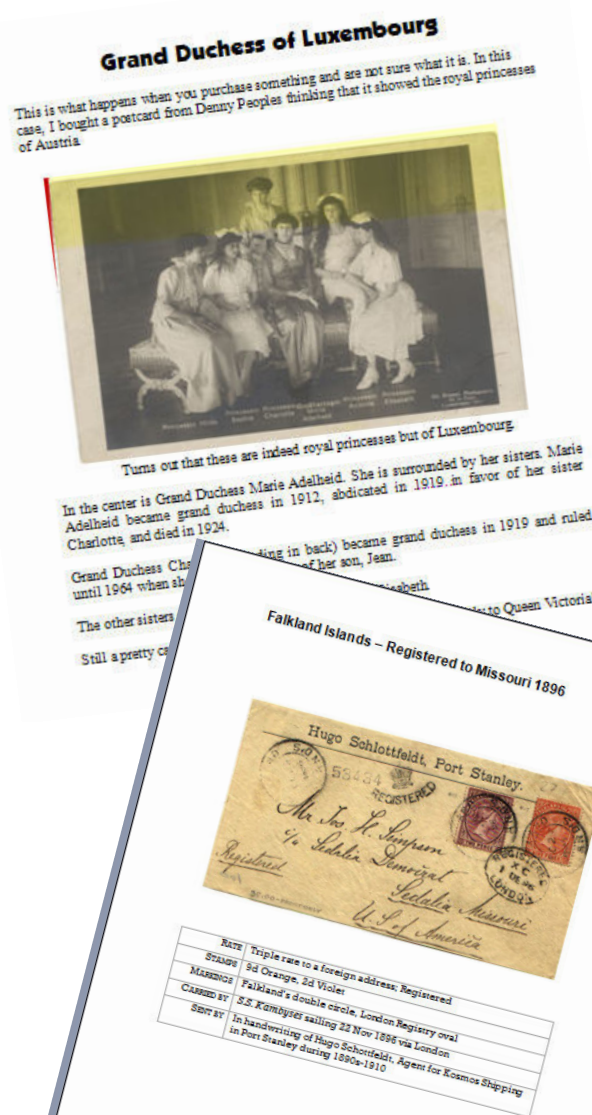
## **Retired Monsanto Circuit Books**

There will be 30 approval books from Monsanto to review. Arrive before 7:30 PM if you want extra time to view the books. We also have several collections you may pick through.

## **StampFest '09**

We only have one more meeting before StampFest convenes on August 29-30. Preliminary sign-up sheets will be at the June 22<sup>nd</sup> meeting.

## **Clothesline Samples**



## Officers – 2009

President .....Tom Minor (314-645-4451)  
 Vice-President..... Joe Conti (636-327-5569)  
 Treasurer..... Gary Hendren (314-576-5261)  
 Secretary ..... Alan Barasch (314-994-1243)  
 Recording Secretary..... Dan Baugher  
 Librarian..... Alan Barasch  
 Buxs Banker ..... Gene Stewart  
 Dispatch Editor ..... Alan Barasch

© 2009 Greater Mound City Stamp Club, Inc

## Important Announcement

If there is a speaker that you would like us to get, perhaps you can facilitate getting him.

<http://www.GreaterMoundCity.org>

## Auction

The list is below. Remember – a lot will not open on the floor unless a bid is placed on it during the “look” period.

Lots should be turned in to **Joe Conti** (papaconti@aol.com) at the time of the breakfast meeting.

## June 2009 Auction

Lot #	Country	Scott #	Cat \$	Description	Min Bid	Owner
1	US	93	\$ 72.50	Perfs cut @ top & right	\$ 6.00	395
2	US	189	\$ 25.00	USED, SMALL THIN	\$ 4.00	395
3	US	224	\$ 20.00	U, F-VF	\$ 5.00	395
4	US	237	\$ 150.00	SLIGHT DG, TONED PAPER, NARROW R MARGIN	\$ 12.00	395
5	US	326	\$ 25.00	U, VF	\$ 5.00	395
6	US	428	\$ 35.00	M, NG, PERFS CUT TOP FRAME	\$ 4.00	395
7	US	556	\$ 20.00	M, SHALLOW THIN	\$ 2.50	395
8	US	623	\$ 14.00	M, F-VF	\$ 4.00	395
9	US	714	\$ 2.40	M	\$ 0.95	306
10	US	697	\$ 6.50	MNH	\$ 1.30	306
11	US	VAR	\$ 5.00	9 DIFF MNH PLATE BLOCK	\$ 2.00	306
12	US	?		2 OLD FIRST FLIGHTS (1954/1935)	\$ 0.50	395
13	US	C140	\$ 30.00	MNH PLANE OF 20	\$ 10.00	395
14	US	C141	\$ 35.00	MNH PLANE OF 20	\$ 12.00	395
15	US	C88	\$ 4.40	COVER, PB & SGL, MNH	\$ 1.25	395
16	HUNGARY	551-4	\$ 125.00	M, LGT HINGE, IMP	\$ 5.00	395
17	HUNGARY	B80-87	\$ 50.00	MNH	\$ 5.00	395
18	TAIWAN	245-6	\$ 2.00	MNH, VF	\$ 0.50	395
19	BOSNIA	2	\$ 13.00	M, VF, HR	\$ 3.00	321
20	BRASIL	253	\$ 7.50	M, NARROW L MARGIN	\$ 2.00	321
21	DWI	18	\$ 12.50	U, F-VF, ROUNDED CORNER	\$ 2.00	321
22	FINLAND	29	\$ 9.25	U, F-VF	\$ 2.00	321
23	FRANCE	36	\$ 20.00	U, VF, HVY CANCEL	\$ 4.00	321
24	FRANCE	630-32	\$ 14.20	MNH, VF	\$ 4.00	321
25	FRANCE	J18	\$ 110.00	U, VF, THIN	\$ 12.00	321
26	GERMANY	36	\$ 65.00	M, NG, THIN, PULLED TOOTH	\$ 4.00	321
27	US	374	\$ 16.00	F NH OG	\$ 6.00	386
28	US	486	\$ 0.85	FVF NH OG	\$ 0.50	386
29	US	496	\$ 7.00	F NH OG	\$ 2.00	386
30	US	530	\$ 4.50	FVF NH OG Offset printing Type IV	\$ 2.50	386
31	US	617-19	\$ 20.75	617 VF NH OG, 618 VF H OG, 619 FVF HR OG Nice set	\$ 7.50	386
32	US	661	\$ 37.50	F NH OG Kansas Overprint	\$ 15.00	386
33	US	671	\$ 5.75	VF-XF NH OG Nebraska Overprint	\$ 6.00	386
34	US	672	\$ 24.00	FVF NH OG Nebraska Overprint	\$ 13.00	386



# Greater Mound City Stamp Club **Perf-Dispatch**

**Volume XV, Number 7**

Established 1884

**August, 2009**

**Where** Parkway Central High School  
Woodsmill Road

**When** 4<sup>th</sup> Monday each month at 8 PM

## **August Meeting**

Our speaker this month is **Vera Felts**, the new Executive Secretary of the American Topical Association. The ATA recently moved its offices to Carterville, IL where Vera resides.

Most of us know Vera and her husband, Bill from St. Louis Stamp Expo where they have staffed the Registration desk for a number of years.

Greater Mound City became an ATA Chapter this year.

## **Breakfast Club Meeting**

The Breakfast group meets the 2<sup>nd</sup> Monday of the month. The next meeting is **September 14<sup>th</sup>** at Steak 'n Shake in Chesterfield at 8:30 AM.

## **2009 SCHEDULE**

August 10.....	Breakfast Meeting
August 24.....	Vera Felts on ATA
August 29-30.....	StampFest
September 14 .....	Breakfast Meeting
September.....	TBA
October 12.....	Breakfast Meeting
October 26.....	David Straight
November 23.....	Auction Bux Sale
December 10.....	Holiday Party

## **Updates**

The numbers near the return address on the envelope are your member number and the last 2 digits of the year through which you are paid.

Since we met in June, your secretary has been busy putting the finishing touches on a new database that tracks in one place all 4 stamp clubs in St. Louis for which he is secretary. Now, when someone moves; he only has to change the record in one place instead of multiples (Many of our members belong to two or more clubs).

## **Retired Monsanto Circuit Books**

There will be 30 approval books from Monsanto to review. Arrive before 7:30 PM if you want extra time to view the books.

## **StampFest '09**

We only have one more meeting before StampFest convenes on August 29-30. Thank you to everyone who has already signed up to man a table, booth, or the snack bar. **Gary** will be contacting you to confirm.

**John Grabowski** of Minnesota is judging exhibits this year. The St. Louis Bears Exhibiting group has been busy getting their new exhibits ready.

We would like to make up one frame of the entries that were part of the Clothesline last meeting.

## **Our BBQ**

Our annual BBQ is held each year on Saturday night of StampFest around 6PM when the show closes for the night.

Our members supply the veggies and dessert and the club supplies the meat. If you are planning to stay for dinner, plan to bring a dish (coordinate with **Alan**).

In prior years, a half dozen of us spent 3-4 hours out back of the school grilling burgers, chicken, and brats. This year, we have a better idea. The meat is being catered by "Miss Piggies BBQ." Why cook ourselves in 105° heat?

## **August Auction**

Joe Conti did not arrive in June with the auction, so this month the auction consists of the lots he did not bring and a few added last week.

## **Did you Know?**

That this year is the **125<sup>th</sup> Anniversary** of the Greater Mound City Stamp Club's founding organization.

## Officers – 2009

President .....Tom Minor (314-645-4451)  
 Vice-President..... Joe Conti (636-327-5569)  
 Treasurer..... Gary Hendren (314-576-5261)  
 Secretary ..... Alan Barasch (314-994-1243)  
 Recording Secretary..... Dan Baugher  
 Librarian..... Alan Barasch  
 Buxs Banker ..... Gene Stewart  
 Dispatch Editor ..... Alan Barasch

## Important Announcement

If there is a speaker that you would like us to get, perhaps you can facilitate getting him.

<http://www.GreaterMoundCity.org>

## Auction

The list is below. Remember – a lot will not open on the floor unless a bid is placed on it during the “look” period.

© 2009 Greater Mound City Stamp Club, Inc

Lot #	Country	Scott #	Cat \$	Description	Min Bid	Owner
1	US	93	\$ 72.50	Perfs cut @ top & right	\$ 6.00	395
2	US	189	\$ 25.00	USED, SMALL THIN	\$ 4.00	395
3	US	224	\$ 20.00	U, F.-VF	\$ 5.00	395
4	US	237	\$ 150.00	SLIGHT DG, TONED PAPER, NARROW R MARGIN	\$ 12.00	395
5	US	326	\$ 25.00	U, VF	\$ 5.00	395
6	US	428	\$ 35.00	M, NG, PERFS CUT TOP FRAME	\$ 4.00	395
7	US	556	\$ 20.00	M, SHALLOW THIN	\$ 2.50	395
8	US	623	\$ 14.00	M, F-VF	\$ 4.00	395
9	US	714	\$ 2.40	M	\$ 0.95	306
10	US	697	\$ 6.50	MNH	\$ 1.30	306
11	US	VAR	\$ 5.00	9 DIFF MNH PLATE BLOCK	\$ 2.00	306
12	US	?		2 OLD FIRST FLIGHTS (1954/1935)	\$ 0.50	395
13	US	C140	\$ 30.00	MNH PLANE OF 20	\$ 10.00	395
14	US	C141	\$ 35.00	MNH PLANE OF 20	\$ 12.00	395
15	US	C88	\$ 4.40	COVER, PB & SGL, MNH	\$ 1.25	395
16	HUNGARY	551-4	\$ 125.00	M, LGT HINGE, IMP	\$ 5.00	395
17	HUNGARY	B80-87	\$ 50.00	MNH	\$ 5.00	395
18	TAIWAN	245-6	\$ 2.00	MNH, VF	\$ 0.50	395
19	BOSNIA	2	\$ 13.00	M, VF, HR	\$ 3.00	321
20	BRASIL	253	\$ 7.50	M, NARROW L MARGIN	\$ 2.00	321
21	DWI	18	\$ 12.50	U, F-VF, ROUNDED CORNER	\$ 2.00	321
22	FINLAND	29	\$ 9.25	U, F-VF	\$ 2.00	321
23	FRANCE	36	\$ 20.00	U, VF, HVY CANCEL	\$ 4.00	321
24	FRANCE	630-32	\$ 14.20	MNH, VF	\$ 4.00	321
25	FRANCE	J18	\$ 110.00	U, VF, THIN	\$ 12.00	321
26	GERMANY	36	\$ 65.00	M, NG, THIN, PULLED TOOTH	\$ 4.00	321
27	US	374	\$ 16.00	F NH OG	\$ 6.00	386
28	US	486	\$ 0.85	FVF NH OG	\$ 0.50	386
29	US	496	\$ 7.00	F NH OG	\$ 2.00	386
30	US	530	\$ 4.50	FVF NH OG Offset printing Type IV	\$ 2.50	386
31	US	617-19	\$ 20.75	617 VF NH OG, 618 VF H OG, 619 FVF HR OG Nice set	\$ 7.50	386
32	US	661	\$ 37.50	F NH OG Kansas Overprint	\$ 15.00	386
33	US	671	\$ 5.75	VF-XF NH OG Nebraska Overprint	\$ 6.00	386
34	US	672	\$ 24.00	FVF NH OG Nebraska Overprint	\$ 13.00	386
35	US	424	\$25.00	XF OG NH	\$12.50	386
36	US	658	\$9.00	VF/XF OG H Kansas Overprint	\$5.00	386
37	US	719//724-26	\$4.55	FVF/VF/FVF/F OG NH	\$2.00	386
38	US	741	\$0.25	XF OG NH Graded (90J) Encapsulated	\$10.00	386
39	US	1284	\$0.20	VF OG NH Perfin! (M) for something in Montana	\$0.25	386
40	US	1947 LP	\$1.50	F OG NH Join Line Pair	\$0.50	386
41	US	C19	\$3.50	F OG NH	\$1.50	386
42	US	K2	\$65.00	FVF NH OG Shanghai Overprint	\$35.00	386

The list is also posted on the GMCSC website.



# Greater Alound City Stamp Club Perf-Dispatch

Volume XIV Number 9

Since 1884

October, 2009

**Where** Parkway Central High School  
Woodsmill Road

**When** 4<sup>th</sup> Monday each month at 8 PM

## ■ OCTOBER MEETING ■

**David Straight** will be joining us for his annual presentation. David really needs no introduction. In addition to writing for many of our favorite philatelic journals, David is on his second term on the APS Board of Vice-Presidents.

Right after our meeting, David will be traveling to Bellefonte to host the 4<sup>th</sup> annual Postal History Symposium. His talk on October 26<sup>th</sup> is related to that talk.

## *Breakfast Club Meeting*

The Breakfast group meets the 2<sup>nd</sup> Monday of the month. The next meeting is **November 9<sup>th</sup>** at Steak 'n Shake near Olive and 141 at 8:30 AM.

## *2009-2010 Schedule*

October 26.....	David Straight
November 23.....	Auction Bux & Election
<b>Thursday</b> , December 10? .....	Holiday Party
January 25, 2010 .....	Alan Barasch
February 23 .....	Abraham Lincoln
March 23 .....	TBA

## ■ ■ ■ SHOWS ■ ■ ■

Our dealer members have shows. **Nancy Moellering's** show will be **Friday and Saturday, October 23-24** at the Heart of St. Charles Banquet Center.

**Gene Stewart** has a bourse the 2<sup>nd</sup> Saturday of each month at the Stratford Inn across from the Chrysler Plant in Fenton.

## ■ AUCTION BUX ■

You remember the Auction Bux that you receive every month for doing things for the good of philately. Well, in November we have a way to spend them.

Our annual sale includes a lot of donated material. There are usually some books, stamps, supplies and other philatelic trash.

So bring your Bux in November. We will have some contests to earn extra Bux before we begin the sale. See you there!

A reminder from Gary: If you have philatelic



materials around the house, you might consider donating them for the Auction Bux Sale.

## SWAP SESSION

We have about 20 approval books with left-over stamps from Monsanto Stamp Club. They will be at the meeting around 7:00; so come early and bring your \$\$\$.

## Officers – 2009

President .....	Tom Minor (314-645-4451)
Vice-President.....	Joe Conti (636-327-5569)
Treasurer.....	Gary Hendren (314-576-5261)
Secretary .....	Alan Barasch (314-994-1243)
Recording Secretary.....	Dan Baugher
Buxs Banker.....	Gene Stewart
Dispatch Editor & Librarian .....	Alan Barasch

© 2009 Greater Mound City Stamp Club, Inc  
 GMCSC is registered with the State of Missouri

### *Important Announcement*

If there is a speaker that you would like us to get, perhaps you can facilitate getting him.

**<http://www.GreaterMoundCity.org>**

Follow links on this page for information about other local clubs, shows, and maps to the shows.

## October Auction

Back in the olden days (about 5 years ago), we did not have a printed list before the auction. This was something that Joe thought up. Your editor wrote him a slick program that would format the list after he clicked all his choices.

Well, Joe's computer is "up on blocks" and no telling when he will get it fixed. It's "on blocks" more than a '47 Chevy! I would suggest he keep the grandchildren away from it; but that is just my opinion.

**So, bring in up to 10 lots for the auction and put them on the table.** Maybe by January (when we have the next regular sale), the computer will be fixed and all will be right with the world.

### HOLIDAY PARTY RESERVATIONS

Names			
# of People		@ \$15.00 each	Total:

The date for the Holiday Party is still in the air. Last year it was on Thursday; we will discuss at the meeting.



# Greater Alound City Stamp Club **Perf-Dispatch**

**Volume XV Number 9**

Since 1884

**November, 2009**

**Where** Parkway Central High School  
South end of the building  
Woodsmill Road  
**When** 4<sup>th</sup> Monday each month at 8 PM

## ■ NOVEMBER MEETING ■

There are 2 orders of business in November, the first is election of officers. At the annual board meeting to discuss meeting topics, the current slate of officers expressed a desire to serve another term.

The second order of business is our annual Auction Bux sale.

### *Breakfast Club Meeting*

The Breakfast group meets the 2<sup>nd</sup> Monday of the month. The next meeting is **December 7<sup>th</sup>** at **Steak 'n Shake** near Olive and Woods Mill Road at 8:30 AM.

### *2009-2010 Schedule*

November 23.....Auction Bux & Election  
**Thursday**, December 10..... Holiday Party  
January 25, 2010 .....Alan Barasch - TBA  
February 22 ..... George Washington  
March 22 ..... Machin Heads

## ■ ■ ■ ■ SHOWS ■ ■ ■ ■

**Gene Stewart** has a bourse the 2<sup>nd</sup> Saturday of each month at the Stratford Inn from 10AM to 4PM across from the Chrysler Plant in Fenton. The Holiday Party show will be December 12<sup>th</sup>.

## ■ AUCTION BUX ■

You remember the Auction Bux that you receive every month for doing things for the good of philately. Well, in November we have a way to spend them.

Arrive early to look at the lots! Turn in a list of 3 lots that you would like to see sold early in the auction while your money is available.

Other lots will be available if the need arises, i.e. there are people with money left.

There will be a chance before the auction begins to earn some "bux" on Monday. We will have interesting trivia games to get the ball rolling.

Thanks to the following donors for making this possible: GMCSC, **Dan Baugher, Roger Grider, Gary Hendren, Ken Paulsen, Hollis Sisk, Gene Stewart.**

Our annual sale includes a lot of donated material. There are usually some books, stamps, supplies and other philatelic trash. I see that there is even a bottle of wine this year.

So bring your Bux in November. We will have some contests to earn extra Bux before we begin the sale. See you there!

## ■ HOLIDAY PARTY ■

Our annual Holiday Party will commence at **6:30 PM** on Thursday, December 10<sup>th</sup> with cocktails and dinner around 7:15. It will again be at the **Orlando Gardens Banquet Center** at McKelvey and Dorsett Roads (3 doors north of the Schnuck's).

Our master and mistress of ceremonies will have their usual games and puzzles to challenge and delight.

Special awards for the most correct answers.

Send party reservations to **Gary Hendren**, 12737 Glenage, Maryland Heights, MO 63043 or email to [G2HSLM@MSN.COM](mailto:G2HSLM@MSN.COM) by Monday, December 7<sup>th</sup> to assure a place at the table

See reservation form on the back page.

## ■ SWAP SESSION ■

We have about 20 approval books with left-over stamps from Monsanto Stamp Club. They will be at the meeting around 7:00; so come early and bring your \$\$\$.

## Officers – 2009

President .....Tom Minor (314-645-4451)  
 Vice-President..... Joe Conti (636-327-5569)  
 Treasurer..... Gary Hendren (314-576-5261)  
 Secretary ..... Alan Barasch (314-608-6088)  
 Recording Secretary..... Dan Baugher  
 Buxs Banker ..... Gene Stewart  
 Dispatch Editor & Librarian ..... Alan Barasch

© 2009 Greater Mound City Stamp Club, Inc  
 GMSCS is registered with the State of Missouri

### *Important Announcement*

If there is a speaker that you would like us to get, perhaps you can facilitate getting him.

**<http://www.GreaterMoundCity.org>**

Follow links on this page for information about other local clubs, shows, and maps to the shows.

## Auction Bux Sale

Lot #	Country	Description	CV/Est	Hammer	Donor
1	Misc	5 Small Packs of Foreign Stamps	\$ 1.00		kp
2	Misc	Group of Souvenir Sheets, All But One MNH	\$ 15.00		gm
3	Misc	Disney Stamps, Over 200	\$ 20.00		gm
4	WW	100 Worldwide	\$ 2.00		gm
5	Anguilla	21 Disney Stamps	\$ 2.00		gm
6	Antigua & Barbuda	12 Disney Stamps	\$ 1.00		gm
7	Bhutan	7 Disney Stamps + 1 Additional	\$ 0.50		gm
8	Costa Rica	Misc Group of over 200 with good CV	\$ 100.00		gm
9	Costa Rica	Sc #80a + #O60a Mint	\$ 14.50		gm
10	Costa Rica	Sc #94 On Piece	\$ 100.00		gm
11	Germany	Selection of MNH - G1	\$ 5.00		gm
12	Germany	Selection of MNH - G2	\$ 5.00		gm
13	Germany	Selection of MNH - G3	\$ 5.00		gm
14	Germany	Selection of MNH - G4	\$ 5.00		gm
15	Germany	Selection of MNH - G5	\$ 5.00		gm
16	Germany	Selection of MNH - G6	\$ 5.00		gm
17	Germany	Selection of MNH - G7	\$ 5.00		gm
18	Germany	Selection of MNH - G8	\$ 5.00		gm
19	G. Britain	1997 Princess Diana Set of 5 MNH	\$ 5.00		gm
20	Grenada	50 Disney Stamps + 30 Additional	\$ 4.00		gm
21	Lesotho	18 Disney Stamps	\$ 2.00		gm
22	Maldives	12 Disney Stamps + 5 Churchill + 1 Additional	\$ 2.00		gm
23	Romania	5 Disney + 6 Stamps	\$ 0.50		gm
24	St. Vincent	28 Disney Stamps + 15 Additional	\$ 2.00		gm
25	San Marino	3 Disney Stamps + 10 Additional	\$ 1.00		gm
26	Sierra Leone	6 Disney Stamps	\$ 0.50		gm
27	Turks & Caicos	21 Disney Stamps + 3 Additional	\$ 2.00		gm
28	U.S.	Sc #1305E Misperfed Strip of 3	\$ 3.00		gm
29	U.S.	Sc #1305E Misperfed Strip of 4	\$ 3.00		gm
30	U.S.	Sc #1686-89, 1976 Bicentennial Souvenir Sheets Complete	\$ 19.00		gm
31	U.S.	4 - 5c Plate Blocks (\$.80 face)	\$ 0.80		gm
32	U.S.	Pack of 13c Bicentennial Flag Stamps on Paper, Multiple copies	\$ 5.00		kp
<b>COVERS</b>					
33	Britain	Parcel Post Package Front	?		gm
34	Brit. Col	2 First Day Covers, 1 QE 2, 1 Butterflies	\$ 2.00		gm
35	Germany	German Cover/British Censor Mark	\$ 2.00		gm
36	U.S.	Mailer's Postmark Permit Club Post Card 9/20/09	\$ 1.00		kp

Lot #	Country	Description	CV/Est	Hammer	Donor
37	U.S.	25 FDC's between 1948-51	\$ 12.50		kp
38	U.S.	25 FDC's between 1953-56	\$ 12.50		kp
39	U.S.	20 FDC's between 1950-57	\$ 10.00		kp
	<b>LITERATURE</b>				
40		Billig's Handbook on Postmarks-Vol 12 (HB)	\$ 10.00		kp
41	U.S.	The U.S. Postal Service - An American History 1775-2002	\$ 1.00		gm
42	Misc	Sanabria Cosmonaut Autographs Identification Guide-1994	\$ 5.00		kp
43	U.S.	New Hussman Stamp Co List #183	\$ 2.00		kp
44	U.S.	The Confederate States Ten-Cent Rose Lithograph	\$ 2.50		gm
		HB - Hardback SB - Softback			
	<b>SUPPLIES</b>				
45		1000 Fold-O-Hinge Pack	\$ 10.00		gm
46		1000 Universal Stamp Hinge Pack	\$ 10.00		gm
47		500 Dennis's Stamp Hinge Pack	\$ 5.00		gm
48		27-3" x 5" Black 2-Strip Stock Cards	\$ 6.00		gm
49		27-3" x 5" Black 2-Strip Stock Cards	\$ 6.00		gm
50		902-6" Pointed Stamp Tongs	\$ 7.00		gm
51		907-6" Tilted Spade Stamp Tongs	\$ 7.00		gm
52		40-40/25(J) Showgard Mounts	\$ 4.50		gm
53		40-25/40 (JV) Showgard Mounts	\$ 4.50		gm
54		40-22/25 (E) Showgard Mounts	\$ 4.50		gm
55		40-25/22 (EH) Showgard Mounts	\$ 4.50		gm
56		40-31/50 (CV) Showgard Mounts	\$ 5.00		gm
57		U.S. Specialist (Kiusalas) Perf Gauge	\$ 2.00		gm
58		Pack of 100 Glassine Envelopes	\$ 1.00		gh
59		3" x 5" File Box	\$ 3.00		gm
60		Pack of Postcard Sleeves	\$ 2.00		gm
61		Pack of Postcard Sleeves	\$ 2.00		gm
62		3-Ring @' Brown Binder with Label Holder on Back Edge	\$ 5.00		tm
63		3-Ring @' Brown Binder with Label Holder on Back Edge	\$ 5.00		tm
64		3-Ring @' Brown Binder with Label Holder on Back Edge	\$ 5.00		tm
65		3-Ring @' Brown Binder with Label Holder on Back Edge + Sheet Protectors	\$ 6.00		tm
66		3-Ring @' Brown Binder with Label Holder on Back Edge + Sheet Protectors	\$ 6.00		tm
67		3-Ring @' Brown Binder with Label Holder on Back Edge + Sheet Protectors	\$ 6.00		tm
68		25 Black Wesco Album Sheets	\$ 2.00		kp
69		Folder of about 50 Quadrilled Album Pages	\$ 2.00		gm
70	Britain	British Empire Blank Album Pages - Blank Quadrilled Pages	\$ 5.00		gm
71	France	Scott's French Specialty Album Pages 1849-1988 + B.O.B.	\$ 40.00		gm
72	Virgin Is.	Scott's Virgin Is. Blank Pages 1866-1985	\$ 10.00		gm
73	U.N.	White Ace Blank U.N. Pages + Scott's 2-Post Pages	\$ 1.00		gm
74		White Ace Black Watermark Tray	\$ 2.00		kp
75		Approx 50-3" x 5" Manila Stock Cards	\$ 3.00		gm
76		Approx 50-3" x 5" Manila Stock Cards	\$ 3.00		gm
77		5 Vario Type 1-Strip Pages	\$ 2.50		gm
78		5 Vario Type 3-Strip Pages	\$ 2.50		gm
79		5 Vario Type 4-Strip Pages	\$ 2.50		gm
80		5 Vario Type 8-Strip Pages	\$ 2.50		gm
81		FDC Cover (100) Holder	\$ 5.00		gm

Lot #	Country	Description	CV/Est	Hammer	Donor
	MISCELLANEO US				
82		Bottle of Wine	\$ 8.00		tm
83		Irwin Weinberg Souvenir Card Featuring the 1856 British Guiana Stamp	\$ 1.00		gm
84		\$10.00 Gift Certificate from Stamps Plus (Good at Fenton)	\$ 10.00		rg
85		\$10.00 Gift Certificate from Gene Stewart (Good at Fenton)	\$ 10.00		gs
86		Greater Mound City Stamp Club Family Membership for 2010	\$ 6.00		gm
87		\$10 Bourse Bucks Coupon (Good at Stampfest)	\$ 10.00		gm
88		Diary by Anatoli N. Berezovoy-211 Days in Space	?		ds
89		Red Canvas Carrying Bag	\$ 5.00		kp
90		25c Airmail Stamp Pin	\$ 1.00		kp
91		Cochise Oil Corp. Stock Certificate	\$ 1.00		gm
92		St. L. Globe-Democrat Photo of 1904 World's Fair Missouri State Building	\$ 5.00		gm
93		Pack of Gummed Country Labels	\$ 1.00		gm
94		2 banknotes, Chile, China, Facsimiles?			gm
95		Special Set of Six Postcards	\$ 5.00		gh
96		1901 Scott "The International Postage Stamp Album" Loose Cover, No Stamps	\$ 10.00		gm
97		TBA			
98		TBA			
99		TBA			
100		TBA			

## HOLIDAY PARTY RESERVATIONS

Names			
# of People		@ \$15.00 each	Total:

Begins **6:30 PM** on Thursday, December 10<sup>th</sup> with cocktails and dinner around **7:15**. It will again be at the **Orlando Gardens Banquet Center** at McKelvey and Dorsett Roads (3 doors north of the Schnuck's). The club picks up the difference between catered price and your charge.

<http://www.orlandogardens.com/locationDorsettVillage.html>