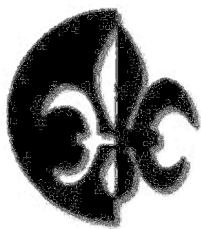


2012-January-perf-dispatch _____	2
2012-February-perf-dispatch _____	4
2012-March-perf-dispatch _____	6
2012-April-perf-dispatch _____	8
2012-June-perf-dispatch _____	9
2012-August-perf-dispatch _____	13
2012-September-perf-dispatch _____	15
2012-October-perf-dispatch _____	17
2012-November-perf-dispatch _____	19



Greater Alound City Stamp Club **Perf-Dispatch**

Volume XVIII Number 1

Since 1884

January, 2012

Where Parkway Central High School
South end of the building
Woodsmill Road

When 4th Monday each month at 8 PM

Breakfast Club Meeting

The Breakfast group meets the second Monday of the month. The next meeting is **February 13th** at **Steak 'n Shake** near Olive and Woods Mill Road at 8:30 AM.

WINTER MEETINGS

January is a time for renewal; a great time to begin new projects or a new collection. Our speaker in January is our president, **Tom Minor**.

Tom has spoken to us on numerous occasions but most people don't realize he collects anything but poster stamps. He began adding to his father's collection several years ago.

While "borrowing" pictures of plate blocks off the internet, I found that there are lots of people who don't know the difference between plate blocks and booklet panes.

In February, we have a Swap Meet planned. Bring your unwanted materials and swap it with someone else. One man's junk is another man's treasure!

2012 Schedule

January 23	Plate Block Collecting
Feb 13	Breakfast Club
February 27.....	Swap Meet
March 12	Breakfast Club
March 16-18	St Louis Stamp Expo
March 26	Mark Twain
April 23	Proofs
May	Auction
June 25	Dinner @ Sports Page
August 25-26	GMCSG StampFest
August 27	Wyoming Postal History
Sept 24	Poland
Oct 22.....	David Straight ??

SHOWS

Gene Stewart has a bourse the 2nd Saturday of each month at the Stratford Inn from 10AM to 4PM across from the former site of the Chrysler Plant in Fenton.

STAMP EXPO

Saint Louis Stamp Expo returns to the Renaissance Airport Hotel on Friday through Sunday, March 16-18.

We need people to volunteer for various jobs around the show including working with the hundreds of children who will attend as well as door duty.

The **United Postal Stationery Society** and **Polonus Philatelic Society** are having their annual conventions at Stamp Expo.

Before the show, on Wednesday and Thursday, APS is offering an "On the Road" course:

Collecting the British Machins

with David Alderfer

The course will focus on the various characteristics that collectors must consider in order to appreciate all the varieties. Characteristics include colors, face values, numerals, papers, gums, phosphor band variations, perforations, regional issues, methods of printing, booklets, se-tenant combinations, and postal history.

A PowerPoint presentation illustrating key points and hands-on experience will be part of the workshop. There will be something of interest for beginner, intermediate, and advanced collectors alike.

Information is on the show website at <http://www.stlouisstampexpo.org> or APS at <http://www.stamps.org>

Follow links on the webpage for information about other local clubs, shows, and maps to the shows.

Important Announcement

If there is a speaker that you would like us to get, perhaps you can facilitate getting him.

<http://www.GreaterMoundCity.org>

Coming Events

PROJECTS



These are images of plate blocks 'borrowed' from the web and may not be representative of what will be displayed by our speaker.

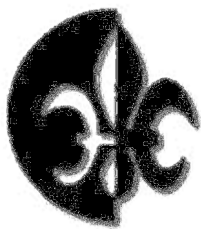
Dues

Dues notices went in the mail in early January. If you have not responded, please bring them to the meeting.

Anniversary

According to your editor's research, this is our 128th year; our president thinks it is the 125th year. Whatever the case, we should celebrate that we are one of the oldest stamp

clubs in the world.



Greater Alound City Stamp Club **Perf-Dispatch**

Volume XVIII Number 2

Since 1884

February, 2012

Where Parkway Central High School
South end of the building
Woodsmill Road

When 4th Monday each month at 8 PM

WINTER MEETINGS

In February, we have a Swap Meet planned. Bring your unwanted materials and swap it with someone else. One man's junk is another man's treasure!

Instead of us trying to impose rules, you decide with your trading partner what the criteria is at the beginning. Do you want to trade on catalog value, face value, or stamp color? You make the rules.

This is a perfect way to exchange some of the junk around the house.

2012 Schedule

Feb 13 Breakfast Club
February 27 Swap Meet
March 12 Breakfast Club
March 16-18 St Louis Stamp Expo
March 26 Mark Twain
April 23 Proofs
May Auction
June 25 Dinner @ Sports Page
July We NEVER meet in July
August 25-26 GMCSC StampFest
August 27 Wyoming Postal History
Sept 24 Poland
Oct 22 David Straight
November Auction Bux
December Holiday Party

SHOWS

Gene Stewart has a bourse the 2nd Saturday of each month at the Stratford Inn from **10AM to 4PM** across from the former site of the Chrysler Plant in Fenton.

The rumors to the effect that the Stratford is closing turned out to be just that; rumors.

Breakfast Club Meeting

The Breakfast group meets the second Monday of the month. The next meeting is **March 12th** at **Steak 'n Shake** near Olive and Woods Mill Road at 8:30 AM.

STAMP EXPO

Saint Louis Stamp Expo returns to the Renaissance Airport Hotel on Friday through Sunday, March 16-18.

On Friday night, March 16th, **Webster Groves Stamp Club** will have their regular meeting at Expo. The meeting begins at 8PM in the Heathrow Room. There will be light hors d'oeuvres before the meeting. The local philatelic community is invited.



The speaker is **Ken Martin**, Executive Director of the American Philatelic Society talking about "Mechanization of Mail."

We need people to volunteer for various jobs around the show including working with the hundreds of children who will attend. Can't stand up for long? How about sitting at the door and watch people enter – great place to greet all your friends.

While at Expo, check out the children's room. **Scott Ward** and his volunteers give out stamps and albums to over 300 kids each year.

The **United Postal Stationery Society** and **Polonus Philatelic Society** are having their annual conventions at Stamp Expo.

BUSY MEMBERS

Our long time member, **David Straight** was recently made a Fellow of the **Royal Philatelic Society of London**. I am not sure exactly what it means; but he is a Jolly Good Fellow and gets to add FRPSL after his name.



Important Announcement

If there is a speaker that you would like us to get, perhaps you can facilitate getting him.

<http://www.GreaterMoundCity.org>

Secretary@GreaterMoundCity.org



Follow links on the webpage for information about other local clubs, shows, and maps to the shows.

PROJECTS

Dues

While writing this, got notice that only 7 members had not renewed their membership yet. Final notices are included in their newsletter envelope.

Anniversary

According to your editor's research, this is our 128th year; our president thinks it is the 125th year. Whatever the case, we should celebrate that we are one of the oldest stamp clubs in the world.



Found a picture on the web of a swap meet. Wonder if I will find any Falklands covers?



PERF-DISPATCH
GREATER MOUND CITY STAMP CLUB
Established 1884
Saint Louis, Missouri

Volume XVIII Number 3



March, 2012

Where Parkway Central High School
South end of the building
Woodsmill Road

When 4th Monday each month at 8 PM

WINTER MEETINGS

Our speaker in March is **Henry Sweets III** from Hannibal on the topic of Mark Twain. Henry has been curator of the Mark Twain Museum in Hannibal since 1978.

An accredited philatelic judge, Henry collects Asiatic Fleet covers and has exhibited Scott A-Z.



2012 Schedule

March 16-18 St Louis Stamp Expo
March 26 Mark Twain – Henry Sweets
April 23 Proofs – Guy Gasser
May Auction
June 25 Dinner @ Sports Page
July We NEVER meet in July
August 25-26 GMCSC StampFest
August 27 Wyoming Postal History – Jim Faber
Sept 24 Poland
Oct 22 David Straight
November Auction Bux
December Holiday Party

SHOWS

Gene Stewart has a bourse the 2nd Saturday of each month at the Stratford Inn from **10AM to 4PM** across from the former site of the Chrysler Plant in Fenton.

Breakfast Club Meeting

The Breakfast group meets the second Monday of the month. The next meeting is **April 9th** at **Steak 'n Shake** near Olive and Woods Mill Road at 8:30 AM.

STAMP EXPO

Saint Louis Stamp Expo returns to the Renaissance Airport Hotel on Friday through Sunday, March 16-18.

On Friday night, March 16th, **Webster Groves Stamp Club** will have their regular meeting at Expo. The meeting begins at 8PM in the Heathrow Room. There will be light hors d'oeuvres before the meeting. The local philatelic community is invited.

The speaker is **Ken Martin**, Executive Director of the American Philatelic Society talking about "Mechanization of Mail."



On Saturday morning, we have 22 boys coming for Boy Scout merit badge training or testing. David and Gary have their teams ready. We have also heard that a group of Cub Scouts is coming to check out the scene.

Know any **adult beginner** collectors? There will be a seminar at Expo. This is entirely separate from the kid's stuff.

While at Expo, check out the children's room. **Scott Ward** and his volunteers give out stamps and albums to over 300 kids each year.

The **United Postal Stationery Society** and **Polonus Philatelic Society** are having their annual conventions at Stamp Expo.

NANCY'S SHOW

The **St. Charles Spring Stamp Show** will be held on Friday and Saturday, **April 20-21, 2012** at the Heart of St Charles Banquet Center. A flyer will be included with your April Perf-Dispatch.

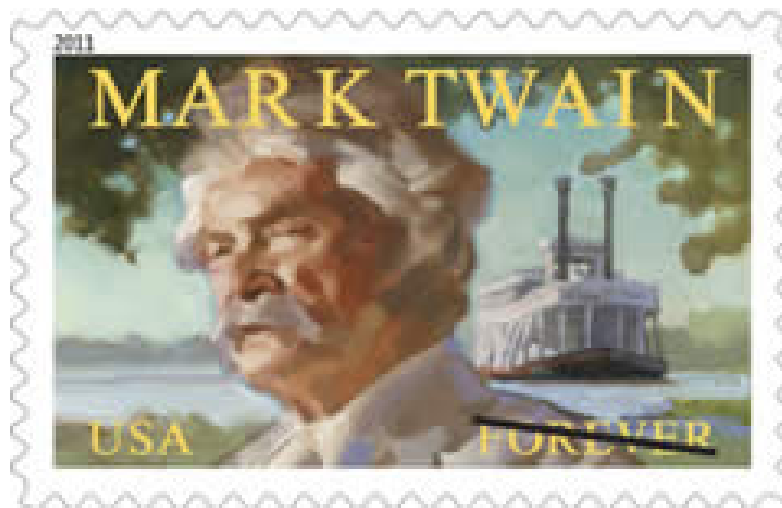
Important Announcement

If there is a speaker that you would like us to get, perhaps you can facilitate getting him.

<http://www.GreaterMoundCity.org>

Follow links on the webpage for information about other local clubs, shows, and maps to the shows.

PROJECTS





PERF-DISPATCH

GREATER MOUND CITY STAMP CLUB

Established 1884
Saint Louis, Missouri

Volume XVIII Number 4



April, 2012

Where Parkway Central High School
South end of the building
Woodsmill Road

When 4th Monday each month at 8 PM

SPRING MEETINGS

Our speaker in April is our own **Guy Gasser**. You may see Guy in his booth at the Fenton show each month.

Several of us saw Guy's presentation of **Proofs** at Webster Groves last year and were anxious to get it for us.



May Meeting

We need to discuss the date of the May meeting because the date coincides with *Memorial Day*.

2012 Schedule

April 23 Proofs – Guy Gasser
May 14..... Breakfast Club
May ★★ Auction
June 11 Breakfast Club
June 25 Dinner @ Sports Page
July 9 Breakfast Club
July We NEVER meet in July
August 25-26 GMCSC StampFest
August 27 Wyoming Postal History – Jim Faber
Sept 24 Poland
Oct 22 David Straight
November Auction Bux
December Holiday Party

Breakfast Club Meeting

The Breakfast group meets the second Monday of the month. The next meeting is **May 14th** at **Steak 'n Shake** near Olive and Woods Mill Road at 8:30 AM.

AUCTION

Last year, the club acquired an extensive collection through donation. Several members have been in the process of breaking it down into lots.

In the next few months, various parts will be auctioned off. The plan is to list the lots in the newsletter and website for a month before sale.

NANCY'S SHOW

The **St. Charles Spring Stamp Show** will be held on **Friday and Saturday, April 20-21, 2012** at the Heart of St Charles Banquet Center.

SHOWS

Gene Stewart has a bourse the 2nd Saturday of each month at the Stratford Inn from **10AM to 4PM** across from the former site of the Chrysler Plant in Fenton.

© 2012..... Greater Mound City Stamp Club, Inc
GMCSC is registered with the State of Missouri

Important Announcement

If there is a speaker that you would like us to get, perhaps you can facilitate getting him.

<http://www.GreaterMoundCity.org>

Secretary@GreaterMoundCity.org

Follow links on the webpage for information about other local clubs, shows, and maps to the shows.



PERF-DISPATCH

GREATER MOUND CITY STAMP CLUB

Established 1884
Saint Louis, Missouri

Volume XVIII Number 6



June, 2012

Where ~~Parkway Central High School~~
~~South end of the building~~
~~Woodsmill Road (see below)~~

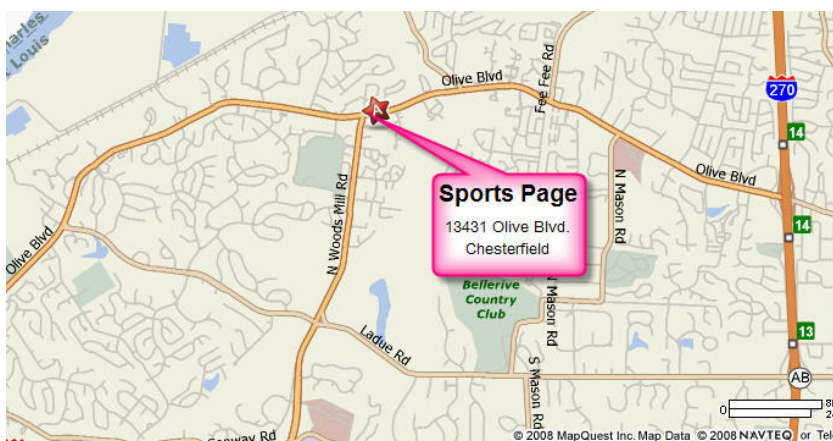
When 4th Monday each month at 8 PM

SPRING MEETINGS

On **June 25th at 6:30PM**, the meeting will be held at the **Sports Page** sports bar at the Northeast corner of Olive and Woods Mill Road [13431 Olive Blvd].

The meeting consists of dinner and conversation only. The lighting does not lend itself to any philatelic activities.

The restaurant allows for separate checks and we will have a whole room to ourselves (on left as you go in), as in previous years.



have been in the process of breaking it down into lots.

In the next few months, various parts will be auctioned off. The plan is to list the lots in the newsletter and website for a month before sale.

The second of 10 sections of France is in this

2012 Schedule

June 25 Dinner @ Sports Page
July 9 Breakfast Club
July We NEVER meet in July
August 13 Breakfast Club
August 25-26 GMCSC StampFest
August 27 Wyoming Postal History – Jim Faber
Sept 24 Poland
Oct 22 David Straight – How to Read a Cover
November Auction Bux
December Holiday Party

Breakfast Club Meeting

The Breakfast group meets the second Monday of the month. The next meeting is **July 9th** at **Steak 'n Shake** near Olive and Woods Mill Road at 8:30 AM.

AUCTION

Last year, the club acquired an extensive collection through donation. Several members

issue and on the website.

SHOWS

Gene Stewart has a bourse the 2nd Saturday of each month at the Stratford Inn from **10AM to 4PM** across from the former site of the Chrysler Plant in Fenton.

StampFest

I hear the plans are progressing for StampFest and we have already signed a contract with Parkway for the room.

We will set up the room after an athletic game but dealers will NOT be allowed to move in until Saturday morning.

Postcards and flyers should start showing up around August 1. Team leaders will be calling you to volunteer for various functions.

Officers

President..... Tom Minor (314-645-4451)
 Vice-PresidentJoe Conti (636-327-5569)
 TreasurerGary Hendren (314-576-5261)
 Secretary..... Alan Barasch (alan@mophil.org)
 Recording SecretaryDan Baugher
 Librarian & Dispatch WriterAlan Barasch
 Buxs BankerGene Stewart

© 2012 Greater Mound City Stamp Club, Inc

Important Announcement

If there is a speaker that you would like us to get, perhaps you can facilitate getting him.

<http://www.GreaterMoundCity.org>

Secretary@GreaterMoundCity.org

Follow links on the webpage for information about other local clubs, shows, and maps to the shows.

AUCTION

Lot #	Catalog #	Description	Min Bid	Bid
1	427/447	u except427	\$ 1.10	
2	448/451	u except451 m	\$ 1.05	
3	455/458	u except 455 m	\$ 0.16	
4	460/463	u,460	\$ 0.80	
5	467/70	467 &469 m,468 &470 u	\$ 0.50	
6	472	m,h	\$ 0.18	
7	473	h,stain	\$ 0.12	
8	474	m, h	\$ 0.05	
9	475/478G	U,475&476 M,MISSING 478 H	\$ 1.60	
10	477/491	short set,minus483m&483u	\$ 0.90	
11	496	u	\$ 0.15	
12	499/502	u,499 m	\$ 0.16	
13	504/23	u,515,521&523 m,521,522 hr	\$ 1.35	
14	523A/523J	u, 523A&523F M	\$ 0.60	
15	524/538	U524 M,531 PRECANCEL	\$ 0.75	
16	548-552	U, 5487549 n residue	\$ 1.00	
17	553-556	u	\$ 2.10	
18	557/558	557 u, 558 m	\$ 0.10	
19	562-562	u, 562 m	\$ 0.16	
20	566/567	m, h stain	\$ 0.10	
21	568-571	u 570/571 h residue	\$ 0.25	
22	575	m, h	\$ 2.30	
23	577/80	u, missing576	\$ 0.28	
24	581-584	581 u,582/4 m, minus 583	\$ 0.25	
25	589	u	\$ 0.50	
26	590	u	\$ 0.20	
27	591-593	u, h residue	\$ 0.40	
28	594/602	u	\$ 0.80	
29	605/606	u, h stain	\$ 0.15	
30	607	m, h	\$ 0.15	
31	608/609	u	\$ 0.15	
32	610	u	\$ 0.05	
33	611	u, h stain	\$ 0.10	
34	612/3	u, h residue	\$ 1.30	
35	616/620	u	\$ 0.30	

Lot #	Catalog #	Description	Min Bid	Bid
36	633	m, hr	\$ 0.15	
37	624	mnh	\$ 11.00	
38	625	u	\$ 0.15	
39	626	m, h,	\$ 0.20	
40	627	m, h	\$ 0.50	
41	628	m, h	\$ 1.80	
42	630-632	u	\$ 0.15	
43	633	u	\$ 0.05	
44	634/6	u ,63476 H RESIDUE	\$ 0.30	
45	637	U	\$ 0.05	
46	643	U	\$ 0.15	
47	645	U	\$ 0.15	
48	647	U,H RESIDUE	\$ 0.05	
49	648	U, H STAIN	\$ 0.40	
50	649	U, H STAIN	\$ 1.50	
51	650/654	U	\$ 0.50	
52	656	M, H	\$ 0.15	
53	658	U	\$ 0.05	
54	659-663	M&U	\$ 0.45	
55	665	U,, H STAIN	\$ 0.15	
56	666/668	U	\$ 0.45	
57	671/2	U	\$ 0.35	
58	673	U, H STAIN	\$ 0.05	
59	676	U, H STAIN	\$ 0.20	
60	677	M, H	\$ 0.55	
61	679	U, H STAIN	\$ 1.10	
62	680	M, H	\$ 0.65	
63	682	U,H STAIN, SM TEAR ON R	\$ 1.30	
64	686	U,H STAIN, SM TEAR ON R	\$ 0.35	
65	687/9	U	\$ 0.25	
66	692	U, H STAIN	\$ 0.15	
67	692A	U, H STAIN	\$ 0.30	
68	693	U	\$ 0.25	
69	694/699	694-696 & 699 M, 697 & 698 U	\$ 0.35	
70	700-705	U	\$ 2.90	
71	706	U	\$ 0.05	
72	707-710	PRE CANCELS	\$ 1.50	
73	711/15	U	\$ 0.45	
74	717	U, H STAIN	\$ 0.35	
75	718	U, H STAIN	\$ 0.20	
76	719/24	U, 720 HAS TEAR & h residue	\$ 0.40	
77	725	u, h stain	\$ 0.20	
78	726	U H STAIN	\$ 0.80	
79	727	U, H STAIN	\$ 0.20	
80	728	U, H STAIN	\$ 1.10	
81	729	U, STAIN ON BACK	\$ 0.65	
82	731	U, H STAIN	\$ 0.25	
83	732	MNH	\$ 1.20	
84	733/39	736/8 M,733-35U,733 H RESIDUE	\$ 0.30	
85	740	U, H MARK	\$ 0.15	

Lot #	Catalog #	Description	Min Bid	Bid
86	741	U SM TEAR, H MARK	\$ 0.25	
87	751/6	751/5 U, 756 MNH, 753 H RESIDUE	\$ 1.00	
88	757	U, H STAIN	\$ 0.15	
89	758	U H MARK	\$ 0.20	
90	759	U, H MARK	\$ 0.25	
91	761	M H MARK	\$ 0.65	
92	762	M,H MARK	\$ 0.60	
93	763	U, H STAIN	\$ 0.25	
94	765	MHH	\$ 0.15	
95	766	U, H MARK	\$ 0.20	
96	767	U, H MARK	\$ 0.10	
97	768	U, H STAIN	\$ 0.25	
98	769	U, H STAIN	\$ 0.25	
99	770	U, H STAIN	\$ 0.90	
100	771	U	\$ 0.80	
		Bid Sheet due to J conti by 8/28		

Your bids should be given to Joe Conti by 28 August for this section of the sale. The email I have is **PapaConti@yahoo.com** – I need to get a better explanation how this is going to work.



PERF-DISPATCH

GREATER MOUND CITY STAMP CLUB

Established 1884
Saint Louis, Missouri

Volume XVIII Number 7



August, 2012

Where Parkway Central High School
South end of the building
Woodsmill Road-(see below)

When 4th Monday each month at 8 PM

FALL MEETINGS

StampFest cover dealer, **Jim Faber** of
Bloomington, IN on **Wyoming Postal
History**, will present our meeting on August 27.

2012 Schedule

August 13Breakfast Club
August 25-26 GMCSC StampFest
August 27 Wyoming Postal History – Jim Faber
Sept 10Breakfast Club
Sept 24 Poland
Oct 8.....Breakfast Club
Oct 22.....David Straight – How to Read a Cover
November Auction Bux
DecemberHoliday Party

Breakfast Club Meeting

The Breakfast group meets the second Monday
of the month. The next meeting is **Sept 10th** at
Steak 'n Shake near Olive and Woods Mill Road
at 8:30 AM.

AUCTION

The auction that we tried to have in the spring,
will be part of the “Silent Auction” at StampFest..

SHOWS

Gene Stewart has a bourse the 2nd Saturday of
each month at the Stratford Inn from **10AM to
4PM** across from the former site of the Chrysler
Plant in Fenton.

Parkway Central Access

At the time of this writing (8/12), the new
MO-141 is open from MO-370 all the way to

Valley Park. It encompasses Creve Coeur Mill
Road, the Earth City Expressway, and Maryland
Heights Expressway.

Your editor made a couple trips out to Parkway
Central to check the new highway and see what
we can expect

The bad news is that there is not an exit for
Parkway Central yet. Coming from the north, you
should exit at Olive (MO-340) and go west a
block to Woods Mill Road. Coming from St
Charles county, you may exit at Earth City.

From the south, I am told that there will be a
new exit opening 8/24/2012 at Ladue and
connecting to old Woods Mill Road south of the
school. If it does not open on schedule, you must
proceed to Olive and come around.

StampFest

Putting on a stamp show is a big deal and our
members always step up. We need lots of
members, but unfortunately our August meeting
is after the show.

Hope we can count on the same crews we had
last year for setup and take-down.

If you worked the snack bar last year, that
chairperson will contact you.

We are expecting about 30 dealers and plan to
mount 40 frames of exhibits. Look for hourly
door prizes.

Annual BBQ

One of the highlights of StampFest is our annual
BBQ when the show closes on Saturday night.
We invite our dealers to join us and all club
members are invited.

If you are coming to dinner, please bring a dish.
The club provides the meats; chicken, briskets,
and pulled pork and coleslaw. **Charlotte's Rib
BBQ** again provides catering.

Officers

President.....	Tom Minor (314-645-4451)
Vice-President	Joe Conti (636-327-5569)
Treasurer	Gary Hendren (314-576-5261)
Secretary.....	Alan Barasch (alan@mophil.org)
Recording Secretary	Dan Baugher
Librarian & Dispatch Writer	Alan Barasch
Buxs Banker	Gene Stewart

© 2012 Greater Mound City Stamp Club, Inc

Important Announcement

If there is a speaker that you would like us to get, perhaps you can facilitate getting him.

<http://www.GreaterMoundCity.org>

Secretary@GreaterMoundCity.org

Follow links on the webpage for information about other local clubs, shows, and maps to the shows.

■■■■AUCTION■■■■

25-26 AUGUST 2012

PARKWAY CENTRAL HIGH SCHOOL – GYMNASIUM

Saturday, 10 AM to 5 PM

Sunday, 10 AM to 4 PM

<http://stampfest.greatermoundcity.org/>



There are a few serious Wyoming collectors. If there were more than a few, the scarcity of Wyoming material would drive prices into the stratosphere.

As the market now stands, a fairly high percentage of Wyoming covers find a home.

Prices remain reasonable because of limited interest. Territorial material is most sought, but all periods are in demand.



PERF-DISPATCH

GREATER MOUND CITY STAMP CLUB

Established 1884
Saint Louis, Missouri

Volume XVIII Number 8



September, 2012

Where Parkway Central High School
South end of the building
Woodsmill Road-(see below)

When 4th Monday each month at 8 PM

FALL MEETINGS

Our treasurer, Gary Hendren has a rare and fun treat for us. In September, he presents “**Place Stamp Here**,” an unusual look at one of his more esoteric collecting specialties.

2012 Schedule

Sept 10Breakfast Club
Sept 24 “Place Stamp Here” – Gary Hendren
Oct 8Breakfast Club
Oct 22 Poland – Ogrodnik & company
November 12Breakfast Club
November 26 Auction Bux
December 10Breakfast Club
December ??Holiday Party

Breakfast Club Meeting

I hear that the Breakfast Club has changed locations. Guess they got tired of off-color eggs.

The Breakfast group meets the second Monday of the month. The next meeting is **October 8th** at **First Watch at Hilltop Village**, 120 Hilltown Village Center on Olive at 8:30 AM.

SHOWS

Gene Stewart has a bourse the 2nd Saturday of each month at the Stratford Inn from **10AM to 4PM** across from the former site of the Chrysler Plant in Fenton.

The **St. Charles Fall Stamp Show** will be Friday and Saturday, October XX at the Heart of St Charles Banquet Center. Please come out and support our dealer members.

StampFest

Putting on a stamp show is a big deal and our members always step up. We counted more than a dozen members who helped in some way and perhaps 40 that visted the show.

NEW MEMBERS

We added several new members at StampFest. Please welcome **Gary Callies** #432, **Herb Shapiro** #431, and **Brian Jarvis** #430.

These additions put us at 61 paid members for 2012.

Meeting Place

If you have never been to a meeting or have not been with us in the last 10 years, our room is at the extreme southern end of the school. To enter the area from the parking lot, after entering the school property, turn left and proceed to the end of the parking lots.

When you see the school bus parking, you are in the right vicinity. There is a cul de sac at the end of the building where a dozen cars can park. The rest of us park in the main lot right outside.

Enter the school doors at the right of the cul de sac, walk down the ramp/stairs and turn left. The noise at the end of the hall is the group. Some members arrive as early as 7PM for trading.

Show Committee

For the last 40 years or so, Gary Hendren has been doing almost everything to get the show going. He needs some help. Let's give it to him!

Officers

President.....	Tom Minor (314-645-4451)
Vice-President	Joe Conti (636-327-5569)
Treasurer	Gary Hendren (314-576-5261)
Secretary.....	Alan Barasch (alan@mophil.org)
Recording Secretary	Dan Baugher
Librarian & Dispatch Writer	Alan Barasch
Buxs Banker	Gene Stewart

© 2012 Greater Mound City Stamp Club, Inc

Important Announcement

If there is a speaker that you would like us to get, perhaps you can facilitate getting him.

<http://www.GreaterMoundCity.org>

Secretary@GreaterMoundCity.org

Follow links on the webpage for information about other local clubs, shows, and maps to the shows.

■■■■AUCTION■■■■

Did you work at StampFest?

Don't forget to claim your Auction Bux points, good for valuable material in our November Auction

At the end of August, MO-141, a.k.a. Woods Mill Road opened adjacent to Parkway Central. Getting to the school from the north, you should come in from Woods Mill and Olive Blvd. From the south, there is a new ramp from the Ladue Road exit that loops around and connects to Woods Mill just south of Parkway Central. The state still has signs out, at this writing to direct you to the school.



PERF-DISPATCH

GREATER MOUND CITY STAMP CLUB

Established 1884
Saint Louis, Missouri

xgc

Volume XVIII Number 9



October, 2012

Where Parkway Central High School
South end of the building
Woodsmill Road-(see below)

When 4th Monday each month at 8 PM

FALL MEETINGS

In October, **Robert Ogrodnik** and **Mariuz Bleszynski** are going to talk about Poland. I think they are also going to talk about Polish stamps but not sure.

2012 Schedule

October 22 Poland – Ogrodnik & Bleszynski
November 12 Breakfast Club
November 26 Auction Bux
December 10 Breakfast Club
December 6 Holiday Party

Breakfast Club Meeting

The Breakfast group meets the second Monday of the month. The next meeting is **November 12th** at **First Watch** at **Hilltop Village**, 120 Hilltown Village Center on Olive at 8:30 AM.

SHOWS

Gene Stewart has a bourse the 2nd Saturday of each month at the Stratford Inn from **10AM to 4PM** across from the former site of the Chrysler Plant in Fenton.

The **St. Charles Fall Stamp Show** will be Friday and Saturday, October 26 & 27 at the **Heart of St Charles Banquet Center**. Please come out and support our dealer members.

Auction Bux Sale

The next newsletter will have the list of items for the Auction Bux Sale in November.

We have chosen Thursday, December 6 for the GMC Holiday party. It will again be held at Syberg's on Dorsett. A coupon to sign-up will be in the November Perf Dispatch.

In Memoriam

Every October for as long as I have kept my document files for the Perf Dispatch all the way back to 2002, **David Straight** has spoken to the Greater Mound City Stamp Club.

Last March 2012, when David was presented the “Elizabeth C. Pope Award for Lifetime Contributions to Philately” at Saint Louis Stamp Expo, we both said that he was too young to receive a “Lifetime” anything. How wrong we were.



On the afternoon of October 9th, I called David with some good news. That wasn't unusual, we spoke virtually every day about something. He sounded a little goofy on the phone; I assumed I had

awoken him from a nap (I did that a lot since he retired two years ago). What was unusual was that 45 minutes later, I received a phone call that David was at the hospital; having suffered a massive stroke.

David died on Saturday, October 13, 2012. He was 57.

The Royal Philatelic Society of London honored David earlier this year as a Fellow for philatelic writing and entitled to add the initials FRPSL after his name.

David arose every morning at 5:30 to write. His articles have appeared in the *American Philatelist*, *Stamp Collector*, *The American Stamp Dealer & Collector*, *the Postal History Journal* and many others. The topics have included everything from extreme back-of-the-book to pneumatics to registry forms to his latest interest, early Mongolia.

Between his ideas to apply technology to postal history research and my ideas, we were constantly coming up with new projects to implement someday. One pet project was an algorithm to determine the volume of a post office based on a date and the registry number for that date.

He was Vice-President of the Postal History Society, he was on the Council of Philatelists for the Smithsonian National Postal Museum, he had started, with Cheryl Ganz, the annual Postal History symposia (called the Winton M. Blount Symposium when held at the Smithsonian National Postal Museum; otherwise just the Symposium on Postal History). David had been vice-president of the APS; on the APRL Board, etc. etc. David was also an officer of GMCSC for several terms in the 1970-80s.

Together, he and Diane DuBois/Robert Dalton Harris taught a course at Summer Seminar on Geography & Postal History in 2011 and this year he taught an introduction to postal history.

He was bursting with ideas, and generous, always, with his time (and money) to help make the organizations happy.

Officers

President	Tom Minor (314-645-4451)
Vice-President	Joe Conti (636-327-5569)
Treasurer	Gary Hendren (314-576-5261)
Secretary	Alan Barasch (alan@mophil.org)
Recording Secretary	Dan Baugher
Librarian & Dispatch Writer	Alan Barasch
Buxs Banker	Gene Stewart

© 2012 Greater Mound City Stamp Club, Inc

Important Announcement

If there is a speaker that you would like us to get, perhaps you can facilitate getting him.

<http://www.GreaterMoundCity.org>

Secretary@GreaterMoundCity.org

Follow links on the webpage for information about other local clubs, shows, and maps to the shows.

■■■■AUCTION■■■■

In November, we have 2 orders of business. The more important is to elect officers for the next year. The second order is our annual Auction Bux Sale.

This is a chance to spent the Bux you have earned all year for various club activities. You can even earn Bux for donating stuff for the Bux Sale.



Recent stamps of Poland



PERF-DISPATCH

GREATER MOUND CITY STAMP CLUB

Established 1884
Saint Louis, Missouri

Volume XVIII Number 10



November-December, 2012

Where Parkway Central High School
South end of the building
Woodsmill Road-(see below)

When 4th Monday each month at 8 PM

FALL MEETINGS

In November, we have 2 orders of business. The more important is to elect officers for the next year. The second order is our annual Auction Bux Sale.

This is a chance to spent the Bux you have earned all year for various club activities. You can even earn Bux for donating stuff for the Bux Sale.

2012 Schedule

November 12Breakfast Club
November 26Election & Auction Bux Sale
December 10Breakfast Club
December 6; 18:30.....Holiday Party

Breakfast Club Meeting

The Breakfast group meets the second Monday of the month. The next meeting is **December 10th** at **First Watch** at **Hilltop Village**, 120 Hilltown Village Center on Olive at 8:30 AM.

SHOWS

Gene Stewart has a bourse the 2nd Saturday of each month at the Stratford Inn from **10AM to 4PM** across from the former site of the Chrysler Plant in Fenton.

Auction Bux Sale

The list of items for the Auction Bux Sale is on the back of this issue.

Every year, we accumulate remnants of collections, donations, and other strange philatelic material. The Auction Bux sale helps us recycle these collections. This year, we again have over 100 lots to be turned over.

<http://www.gretermoundcity.org/auction.htm>

OUR MEMBERS

Our vice-president, **Joe Conti** had by-pass surgery several weeks ago. Hope to see him back at a meeting very soon.

HOLIDAY PARTY

Never been to our Holiday Party? It's always a lot of fun. Our Masters of Fun have games, puzzles, and prizes for the whole family.

The club picks up most of the cost of the meal and you pay only \$15 a head. The menu is at least 2 meats, several vegetables, dessert, bread, etc.. You also get a ticket for your libation of choice.

We have chosen **Thursday, December 6** for the GMC Holiday party. It will again be held at Syberg's on Dorsett. Arrive for fun at **6:30** with dinner at **7:15**.

A coupon to sign-up is below.

Holiday Party 2012

Your name Please Print _____ # Reservations @ \$15 each _____

Guest/Spouse Name _____

Guest/Spouse Name _____

Please send checks to Gary Hendren, 12737 Glenage, Maryland Heights, MO 63043 before 12/1

Officers

President.....Tom Minor (314-645-4451)
 Vice-PresidentJoe Conti (636-327-5569)
 TreasurerGary Hendren (314-576-5261)
 Secretary.....Alan Barasch (alan@mophil.org)
 Recording SecretaryDan Baugher
 Librarian & Dispatch WriterAlan Barasch
 Buxs BankerGene Stewart

© 2012 Greater Mound City Stamp Club, Inc

Important Announcement

If there is a speaker that you would like us to get, perhaps you can facilitate getting him.

<http://www.GreaterMoundCity.org>

Secretary@GreaterMoundCity.org

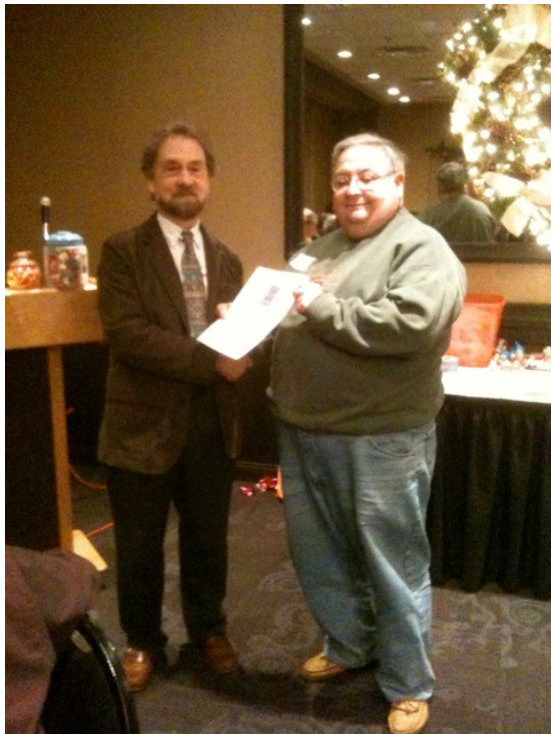
Follow links on the webpage for information about other local clubs, shows, and maps to the shows.

AUCTION

Lot #	Country	Description	CV/Est	Hammer	Donor
STAMPS					
1	U.S.	Sc #35, Used, F-VF, w/Red CDS, 18 July	\$72.50		GG
2	U.S.	Sc #76, Used, F-VF, w/Light Black Circular Grid, Couple of Short Perfs	\$120.00		GG
3	U.S.	Sc #1608, 1610-12, \$.50, \$1, \$2, \$5, Used	\$3.00		GMC
4	U.S.	Sc 2196, \$5 Bret Harte, Used	\$1.00		GMC
5	U.S.	Sc 2592, \$5 Washington/Jackson	\$2.50		GMC
6	U.S.	Sc #2637-41, Strip of 5, With Tabs, MNH	\$3.00		GMC
7	U.S.	Sc #C38, MNH	\$3.50		GH
8	U.S.	Sc #C80, MNH	\$1.60		GH
9	U.N.	Sc #33, MNH	\$2.40		GMC
10	U.N.	SC #57, Inscription Corner Block of 6, MNH	\$1.20		GMC
11	Br Vir Isl	Sc #537-8 Prince Harry/S. Ferguson Wedding Booklet	\$6.00		GMC
12	Br Vir Isl	Sc #537-40 Prince Harry/S. Ferguson Wedding Booklet, Unlisted Inperf	\$8.00		GMC
13	Br Vir Isl	Sc #555, MNH, Souv Sheet	\$1.40		GMC
14	Br Vir Isl	Sc #556, MNH, Souv Sheet	\$1.75		GMC
15	Br Vir Isl	Sc #557, MNH, Souv Sheet	\$2.75		GMC
16	Br Vir Isl	Sc #558, MNH, Souv Sheet	\$5.25		GMC
17	Br Vir Isl	Sc #589, MNH, Souv Sheet	\$6.25		GMC
18	Canal Zone	Sc #C22, Used, Air Mail	\$0.25		GMC
19	Ceylon	5 Used stamps	?		GMC
20	China	Sc #1776, Strip of 5 Republic of China	?		DB
21	Japan	Sc #396, MNH, Ungummed, Souv Sheet	\$17.50		GMC
22	Hungary	Sc #C24, MNH, Souv. Sheet	\$6.20		GMC
23	Hungary	Sc #C323a, MNH, Souv Sheet	\$3.75		GMC
24	Hungary	Sc #C328, MNH, Souv Sheet, Space Topical	\$3.00		GMC
25	Hungary	Sc #Unlisted, MNH, Souv Sheet	\$8.00		GMC
26	Mexico	Sc Unlisted, MNH	\$1.00		GMC
27	Mexico	Sc #1385, MNH, Souv Sheet	\$3.50		GMC
28	Mexico	Sc #C614, MNH, Souv Sheet	\$1.75		GMC
29	Philippin	11 U.S Overprints + 1 Envelope Cut Square	?		GMC
30	Worldwide	Suitcase w/Ziplock Bags of Stamps on/off Paper	?		DB
31	Worldwide	Large Ziplock Bag of Stamps on/off Paper	?		DB
32	Worldwide	Large Ziplock Bag of Stamps on/off Paper	?		DB
33	Worldwide	6 Old Stamp Albums	?		DB
34	Germany	Germany Stamps Mint/Used	?		DB
35	Japan	Japanese, Used on Approval Sheets	?		DB
36	Gr. Brit.	Great Britain, Used on Approval Sheets	?		DB
37	Worldwide	Binder Full of Stock Sheets	?		DB
38	Worldwide	Bag of Stamps Sorted by Country	?		GMC
COVERS					
39	U.S.	Sc #863, FDC, Samuel Clemmens FDC, Hannibal	\$1.50		GH

Lot #	Country	Description	CV/Est	Hammer	Donor
40	U.S.	Sc #1020 FDC Louisiana Purchase 150th Anniv., St. Louis	\$3.00		GH
41	U.S.	Sc #1055 FDC, Cachet Craft, Jefferson Coil, St. Louis	\$1.00		GH
42	U.S.	Sc #1499 FDC, Unlisted Cachet, Harry Truman, Independence	\$1.00		GH
43	U.S.	Sc #1504 FDC, Artmaster, Angus Cattle, St. Joseph	\$1.00		GH
44	U.S.	Sc #1757 FDC, Can Int'l Phil Exhib sheet of 10	\$5.00		GH
45	U.S.	Sc #2044 FDC, Art Craft, Scott Joplin, Sedalia	\$1.00		GH
46	U.S.	Sc #2239 FDC, Post Comm Soc, TS Eliot, St. Louis	\$1.00		GH
47	U.S.	Sc #2393, FDC, Sandusky, OH, Chesterfield Faust Park Connection	\$2.00		GMC
LITERATURE					
48	U.S.	Airpost Journal, 2010, 11 Issues, Monthly	\$22.00		JD
49	U.S.	Airpost Journal, 2011, 12 Issues, Monthly	\$24.00		JD
50	U.S.	Airpost Journal, 2012, 10 Issues, Jan-Oct, Monthly	\$20.00		JD
51	Swiss	11 Issues of Amer. Helvetia Phil. Soc Journal, Comp Jan '11-Sep '12, Bi-monthly	\$22.00		JD
SUPPLIES					
52		10 Manila Stock Pages, New	\$4.00		RG
53		10 Manila Stock Pages, New	\$4.00		RG
54		25 Small Sized Manilla Stock Cards	\$5.00		GMC
55		16 Small Sized Manilla Stock Cards	\$3.20		GMC
56		13 Small Sized Black Stock Cards	\$3.00		GMC
57		Showgard Philatelic Gauge/Mount Gauge	\$4.00		GMC
58		Showgard Mounts, Size EH, 25/22	\$3.85		GMC
59		Showgard Mounts, Size J, 40/25, Horizontal	\$3.85		GMC
60		Showgard Mounts, Size J, 40/25, Horizontal	\$3.85		GMC
61		Showgard Mounts, Size JV, 25/40, Vertical	\$3.85		GMC
62		Showgard Mounts #52, 11 Full Strips	\$4.00		GMC
63		Showgard Mounts #52, 11 Full Strips	\$4.00		GMC
64		Showgard Mounts #52, Unopened Pack	\$5.00		GMC
65		Showgard Mounts #52, Unopened Pack	\$5.00		GMC
66		Showgard Mounts #89-4L, 10 Full Strips	\$6.00		GMC
67		Showgard Mounts #105-4L, 9 Full Strips	\$6.00		GMC
68		Showgard Mounts #111-4L, 8 Full Strips	\$6.00		GMC
69		Showgard Mounts #127/70, Unopened Pack, Moon Landing Size	\$6.00		GMC
70		Showgard Mounts #127/70, Unopened Pack, Moon Landing Size	\$6.00		GMC
71		Showgard Mounts #127/70, Unopened Pack, Moon Landing Size	\$6.00		GMC
72		Showgard Mounts #127/70, Unopened Pack, Moon Landing Size	\$6.00		GMC
73		Showgard Mounts #127/70, Unopened Pack, Moon Landing Size	\$6.00		GMC
74		Showgard Mounts #127/70, Unopened Pack, Moon Landing Size	\$6.00		GMC
75		Showgard Mounts #127/70, Unopened Pack, Moon Landing Size	\$6.00		GMC
76		3-Ring 6" x 9" Binder w/10 Stock Pages	\$5.00		GMC
77		3-Ring 6" x 9" Binder w/10 Stock Pages	\$5.00		GMC
78		Stamp Decoder for Current Stamps	\$8.25		GMC
79		1000 Prinz Folded Hinges	\$3.00		GMC
80		1000 Prinz Folded Hinges	\$3.00		GMC
81		1000 Dennisen Folded Hinges	\$5.00		GMC
82		1000 Dennisen Folded Hinges	\$5.00		GMC
83		Watermark/Stamp Tray	\$1.00		GMC
84		10X Magnifying Glass	\$8.50		GMC
85		5 Pack of 8s Vario Pages	\$5.00		GMC
86		Round Tip Tongs	\$3.00		GMC
87		Spade Tip Tongs	\$3.00		GMC
88		Kiusalas Specialist Gauge, Metal, w/ Perforation Chart	\$10.00		GG
89		Small Box of 1000 Glassines	\$15.00		GMC
90		Pack of 100 Black 102 Cards	\$5.00		GMC
91		Pack of 100+ 2" x 3" Glassines	\$5.00		GMC
92		Pack of 100 #10 Envelope Sleeves	\$3.50		GMC

Lot #	Country	Description	CV/Est	Ham mer	Donor
93		First Day Cover Binder/21 Pages of either 2 or 4 Covers	\$5.00		GMC
MISCELLANEOUS					
94	U.S.	Mississippi-Missouri "Longest" Stamp Pin	\$2.00		GMC
95	U.S.	St. Louis Arch "Tallest" Stamp Pin	\$2.00		GMC
96		Misc. Covers, Postal Cards, Christmas Seals	?		DB
97		2 Stamp Posters	?		DB
98		HP 901 Black Ink Cartridge-In Wrapper	\$15.00		GH
99		TWA Folding Hanger	\$1.00		GMC
100		Bottle Cheese Spread Holder	\$10.00		GH
101		Legend of the Dreamcatcher	\$5.00		LH
102	USPS	Bicentennial Heritage Collection Album	\$2.00		GMC
103	USPS	Americana Series Collection Album	\$2.00		GMC
104	USPS	1908 Olympic Games Collection Album	\$2.00		GMC



Presentation from Holiday Party 2010